

OREGON CORNER RESTORATION FORM

SECTION 5 & 4 TOWNSHIP 1 NORTH RANGE 29 EAST

A-9

COUNTY : UMATILLA DATE: JUNE 2007

CORNER DESIGNATION

SECTION CORNER
CLOSING CORNER

___ CONDITION REPORT ONLY
 NOT FOUND
 ___ RENEWED
 ___ UNCOVERED
 SURVEYED IN
 REFERENCED

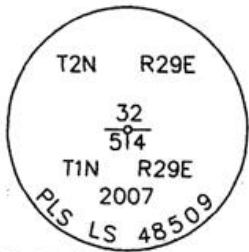
PREVIOUS RENEWALS / SURVEYS, ETC.

ORIGINALLY SURVEYED IN 1858 BY THOMPSON UNDER CONTRACT #79. HE SET A POST IN A MOUND OF EARTH.
 SURVEYED IN 1859 BY THOMPSON UNDER CONTRACT #83. HE SET A POST IN A MOUND OF EARTH.
 SURVEYED IN 1860 BY CARTEE UNDER CONTRACT #88. HE SET A POST IN A MOUND OF EARTH.

MONUMENTS AND ACCESSORIES FOUND: CONDITION AND SOURCE

NONE

MONUMENT DETAIL

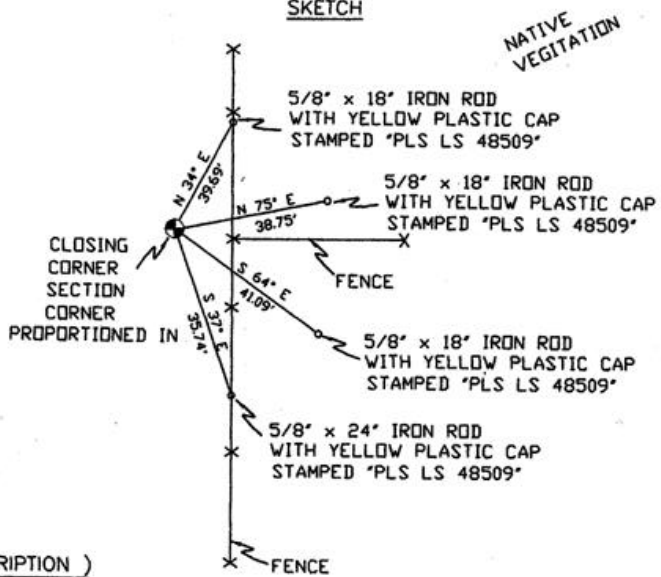


NAD 83/91
OREGON STATE PLANE
INTERNATIONAL FEET

708380.5419
8533491.3670



SKETCH



MONUMENT SET (PROCEDURES AND DESCRIPTION)

SET 2 3/8" BRASS CAP 2 FEET BELOW SURFACE
 SINGLE PROPORTIONED IN FROM FND WOOD POST MARKING THE NE CORNER OF SECTION 4 AND THE FND 2 3/8" B.C. MARKING THE NW CORNER OF SECTION 6.

NEW ACCESSORIES FROM WHICH

- A 5/8" x 18" IRON ROD WITH A PLASTIC CAP STAMPED "PLS LS 48509" LIES N 34° E, 39.69 FEET.
- A 5/8" x 18" IRON ROD WITH A PLASTIC CAP STAMPED "PLS LS 48509" LIES N 75° E, 38.75' FEET.
- A 5/8" x 18" IRON ROD WITH A PLASTIC CAP STAMPED "PLS LS 48509" LIES S 64° E, 41.09 FEET.
- A 5/8" x 24" IRON ROD WITH A PLASTIC CAP STAMPED "PLS LS 48509" LIES S 37° E, 35.74 FEET.

LOCATION AND COMMENTS

FROM INTERSECTION OF SPIKES GULCH WITH NORTH BOUNDARY OF TOWNSHIP 1 NORTH, RANGE 29 EAST W.M. GO EAST ± 1.1 MILES TO CORNER.

COMPASS DEC.

17° EAST

FIRM/AGENCY

PRIMM LAND SURVEYING
1340 N.E. 4TH STREET
P.O. BOX 1322
HERMISTON, OREGON 97838

PARTY CHIEF

BRIT L. PRIMM

NOTES

WITNESS

CODY L. HANSEN

SURVEYOR'S SEAL

REGISTERED
PROFESSIONAL
LAND SURVEYOR

Brit L. Primm

OREGON
JULY 13, 1999
BRIT L. PRIMM
48509

EXPIRATION DATE: 31 JAN 08

07-260-C