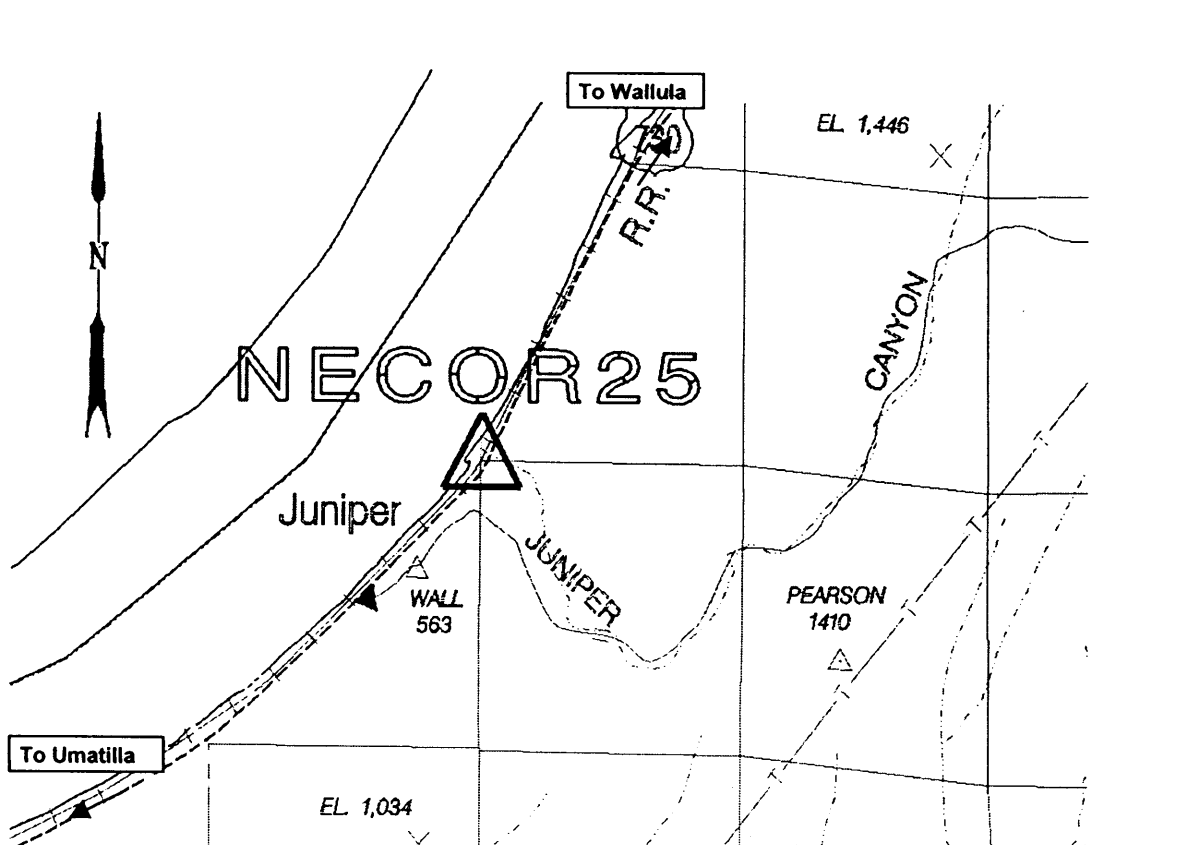


| | | |
|-------------------------------------|--------------------------------------|--------------------------------|
| State: Oregon | County: Umatilla | Station Name: NE COR 25 |
| Section: 25 | Township: 6N | Range: 30E WM |
| Date Found: 7 Oct., 1997 | | |
| Geodetic Datum: WGS 84 | Latitude: N 45°58'46.03610" | +/- 0.0135 m 2 sigma |
| | Longitude: W 118°59'41.32457" | +/- 0.0288 m 2 sigma |
| SPCS Datum: NAD 83 (1991) | Northing: 258097.5734 meters | |
| OREGON NORTH | Easting: 2616632.5970 meters | |
| Convergence: : + ° ' " | Conversion Factor: .999981186 | |
| Vertical Datum: NGVD 1929/47 | Ortho. Height: m +/- m | |
| | Ellips. Height: N/A | |
| | Seperation: N/A | |
| Geoid Model: Geoid 96 | Geoid Height: N/A | |

DIRECTIONS TO MONUMENT: To reach the station from the Jct. of State Highway 36 (Cold Springs Highway and US Route 730, go east on US Route 730 - 8.0 miles (approx.) to the station on the north. Approximately MP 201.57. The station is 3.7 meters south of railroad south rail and 16.7 meters north of the centerline of U.S. Route 730.

Monument is on Rail Road Right of Way – Permission is needed to access this monument.

LOCATION SKETCH: Δ- MONUMENT



NOT TO SCALE

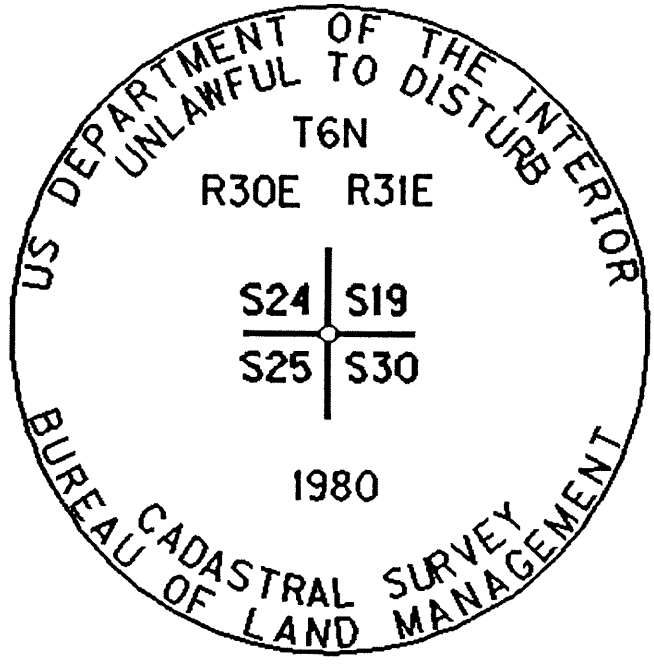
RECEIVED BY
 Umatilla County Surveyor
 Date 4-98
 Rec'd By: XX
 No. 98-56-6

MONUMENT AND CAP DESCRIPTION:

Monument Type: Aluminum Pipe Size: 0.060 M

Cap Type: Aluminum Disk Size: 0.080 M Diameter.

Monument is flush with ground.



RECEIVED BY

Umatilla County Surveyor

Date 4-98

Rec'd By KK

No. 98-56-6