

LEGEND

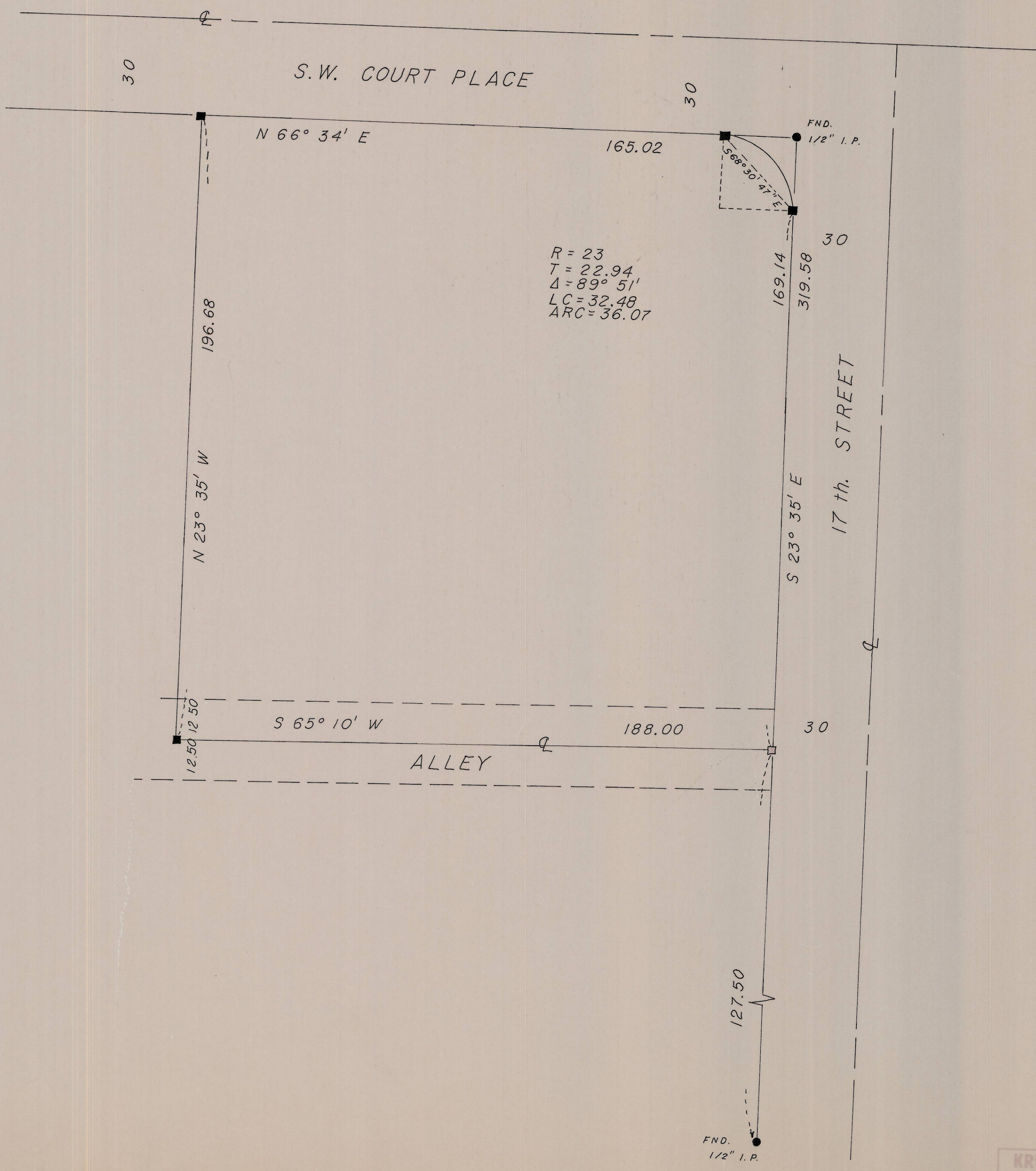
□ SET 5/8" I.PIN

NOTE:

ALL BEARINGS BASED UPON
PLATED SURVEY BY
RONALD L. MUNNS NO. 4863
DATED: 1-14-76

ZONED

TOURIST COMMERCIAL



RECEIVED BY
Umatilla County Surveyor
Date 4-81
Rec'd By BLS
No. S-55c

SCALE
1" = 20'
DATE
5-20-76
DRN BY
T.E.H.
CKD BY
D.H.K.
DRNG. NO.
76-33D

KRUMBEIN ENGINEERING CO.
ENGINEERS - SURVEYORS - PLANNERS
218 E. 1st, Pendleton, Oregon

SURVEY FOR
C & G ENGINEERING