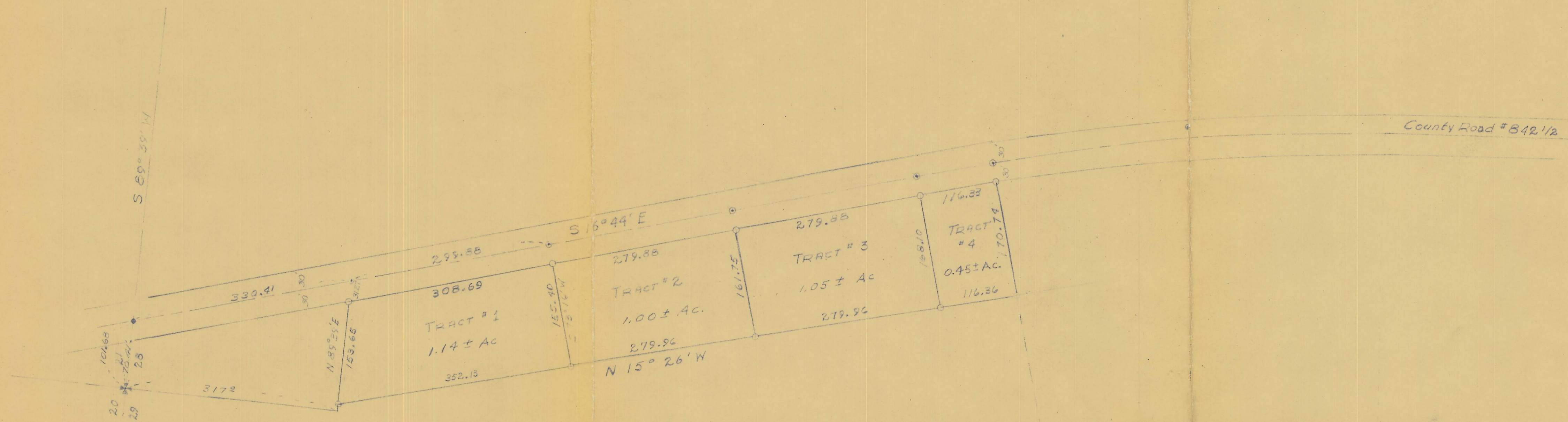


157° 39'
15° 26'



D = 20
Δ = 11° 50'
T = 296.87
R = 2864.79

- Legend -
● Found
○ Set ac nails
○ Set IP.



Survey
for
LEVI ELDRIDGE
West 1/2 of the NW 1/4 of Section
28, Twp 1 S, R 32 E W.M
Umatillo County Oregon
Scale 1" = 100 feet April 26, 57

VERNON B. TENNESON & ASSOCIATES
Consulting Engineers
Pendleton Oregon

D-850-C