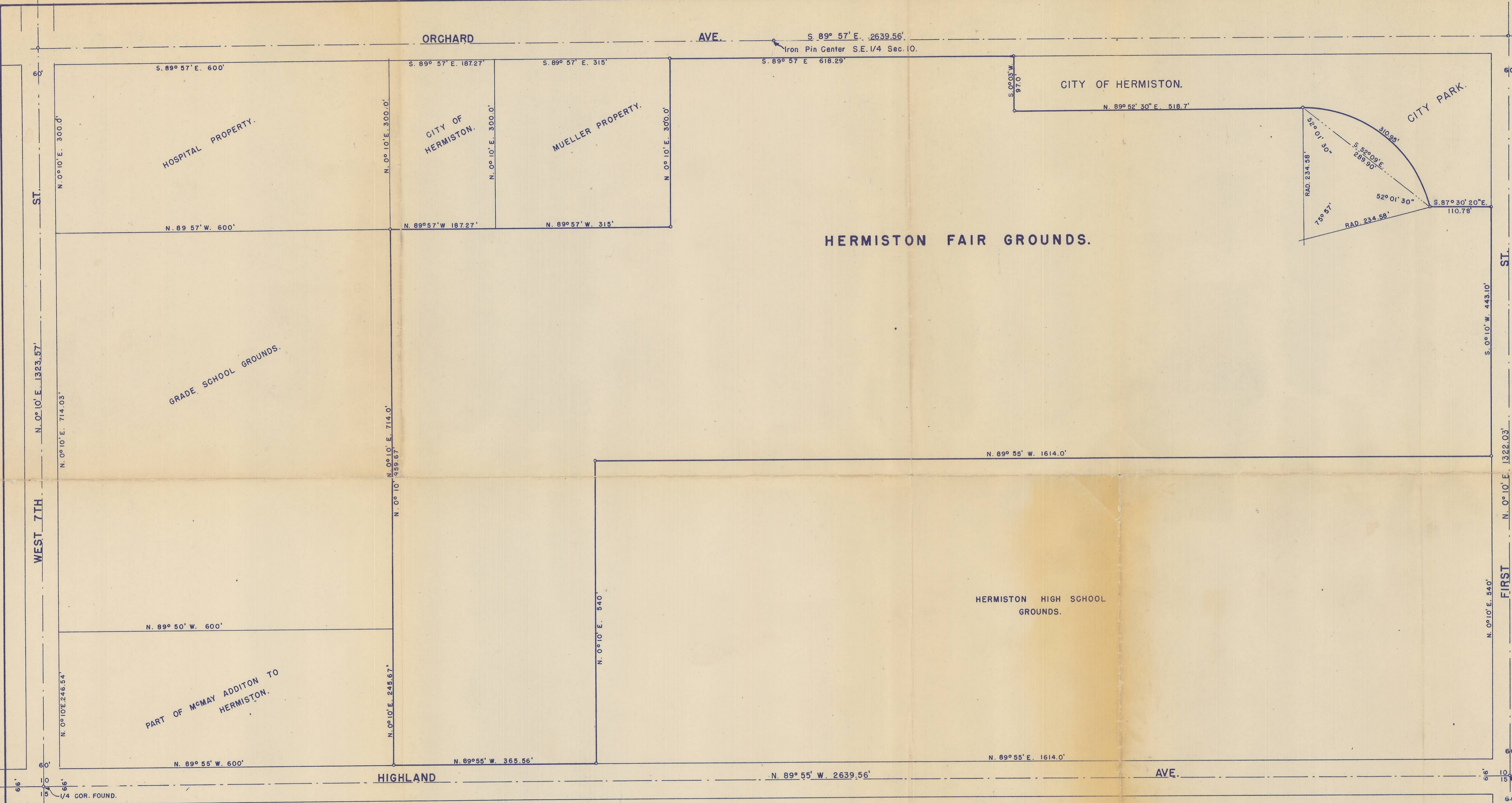


10D Q-613-C



Note: 1952, Co. Surveyor was Frank Hayes, In 1980, we assumed that this was done by him



I.P. Cor. To Secs. 10, 11, 14 & 15 Tp. 4, N., R. 28, E.W.M.

SURVEY OF HERMISTON FAIR GROUNDS

SURVEYED APRIL 16-18, 1952.

SCALE 1" = 100'

SE 10