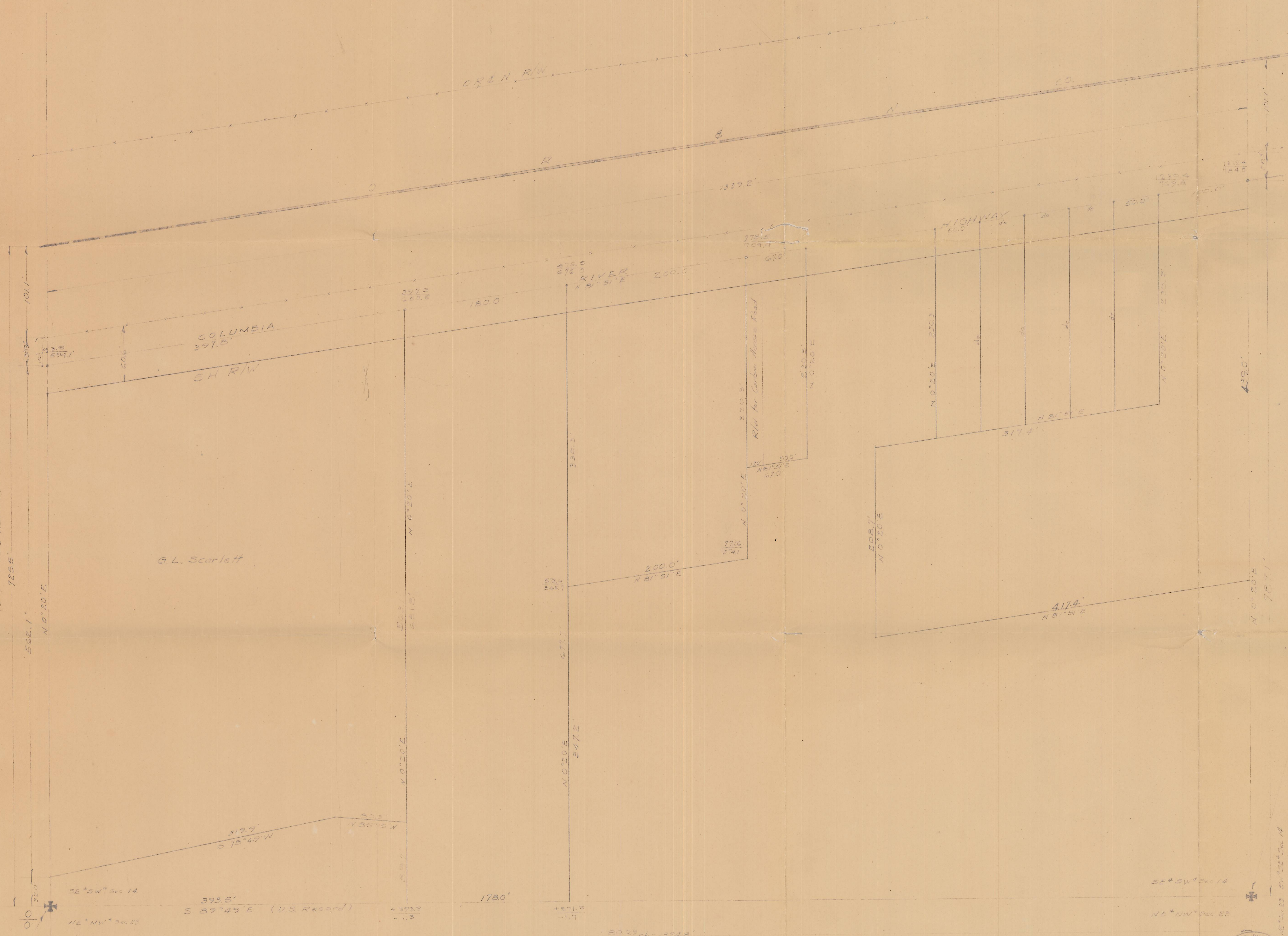


1220.0' to 1/4 Sec  
Columbia River & Water Co. Plan  
7235



Q-103-C  
SE 1/4, SW 1/4, SEC. 14, T5N, R27E

Found Corner Monument set at 1/4 corner  
by Oregon Land & Water Co.

For re-establishment of this corner  
refer to my survey notes filed with  
County Recorder of Polk County

Book 1234A  
(U.S. Record)

SE 1/4 SW 1/4 Sec 14  
NE 1/4 NW 1/4 Sec 20



SUBDIVISION OF ED. H. CARLSON PROPERTY		FILE NO. 2# 11070
Location of SE 1/4 SW 1/4, Sec. 14, T5N, R27E		DATE JULY 11, 1941
Survey by JERRY A. MOORE		SHEET NO. 7

Q-103-C