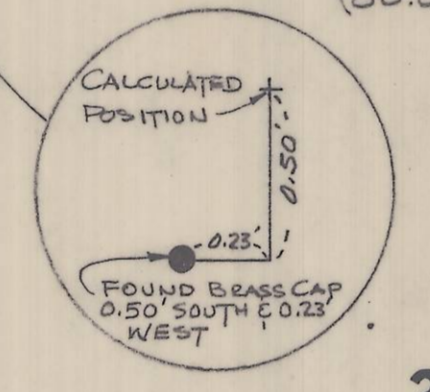
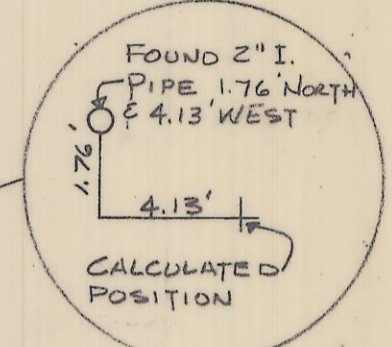
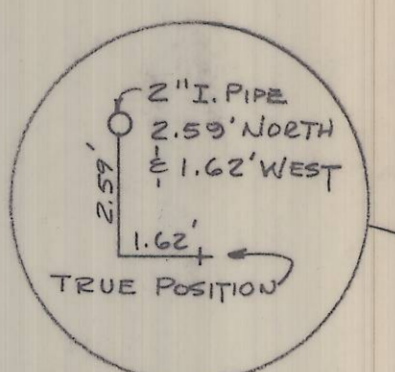
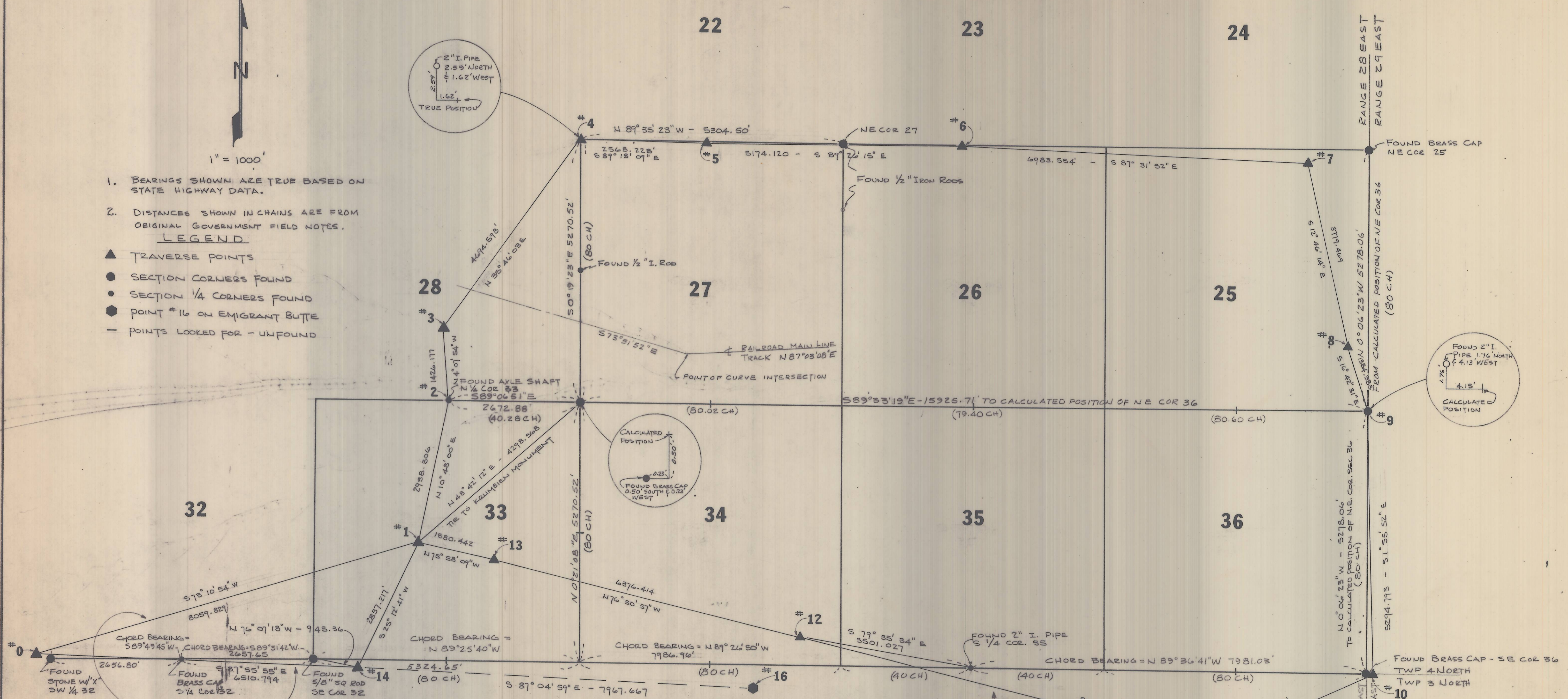


1. BEARINGS SHOWN ARE TRUE BASED ON STATE HIGHWAY DATA.
  2. DISTANCES SHOWN IN CHAINS ARE FROM ORIGINAL GOVERNMENT FIELD NOTES.
- LEGEND**
- ▲ TRAVERSE POINTS
  - SECTION CORNERS FOUND
  - SECTION 1/4 CORNERS FOUND
  - POINT #16 ON EMIGRANT BUTTE
  - POINTS LOOKED FOR - UNFOUND



**NOTES:**

CHECK ACCURACY COMPARISON AGAINST OTHER SURVEY BY STAEBLER:

1. S.E. COR. SEC. 36 TO S. 1/4 COR. SEC. 35
  - A) STAEBLER DIST : 7981.17
  - B) OUR DIST : 7981.03
  - C) DIFFERENCE : 0.14
  - D) ACCURACY : 1 : 57,007
2. S.W. COR. SEC. 32 TO S. 1/4 COR. SEC. 35
  - A) STAEBLER DIST : 18,425.29
  - B) OUR DIST : 18,425.74
  - C) DIFFERENCE : 0.45
  - D) ACCURACY : 1 : 43,275

LOOP 1 : TRAVERSE LENGTH = 54,358 FT. OR 10.295 MILES  
 ERROR = 0.04 N-S / 0.105 E-W > 0.11  
 ERROR OF CLOSURE = 1 : 494,000

LOOP 2 : TRAVERSE LENGTH = 17,407.85 FT OR 3.297 MILES  
 ERROR = 0.076 N-S / 0.06 E-W > 0.065  
 ERROR OF CLOSURE = 1 : 267,813



SURVEY FOR		
UMATILLA COUNTY		
WALLULIS & ASSOCIATES		
ENGINEERING & PLANNING		
REVISIONS	DATE	SCALE
7/7/77	6/14/77	1" = 1000'
	SHEET OF	
	1	

M-79

M-79-C