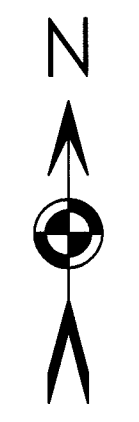


RECORD OF SURVEY

FOR AN ACCESS AND WATERLINE EASEMENT FOR WALLA WALLA ACADEMY TOWNSHIP 4 NORTH RANGE 37 & 38 EAST, UMATILLA COUNTY OREGON



BASIS OF BEARINGS
BEARINGS SHOWN ARE TRUE GEODETIC BASED ON GPS OBSERVATIONS MADE NEAR THE SOUTHEAST CORNER OF SECTION 25, T.4N, R.37E, W.M.

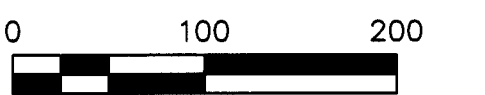
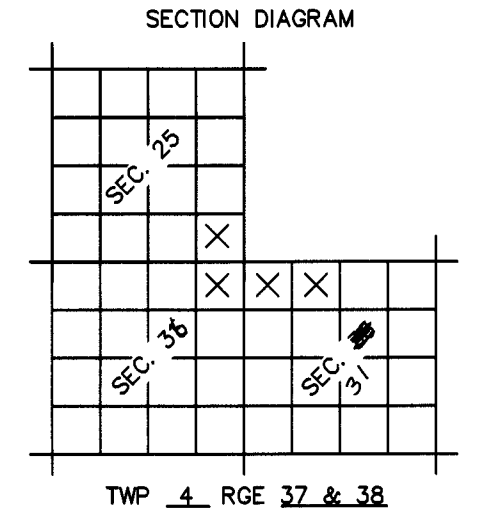
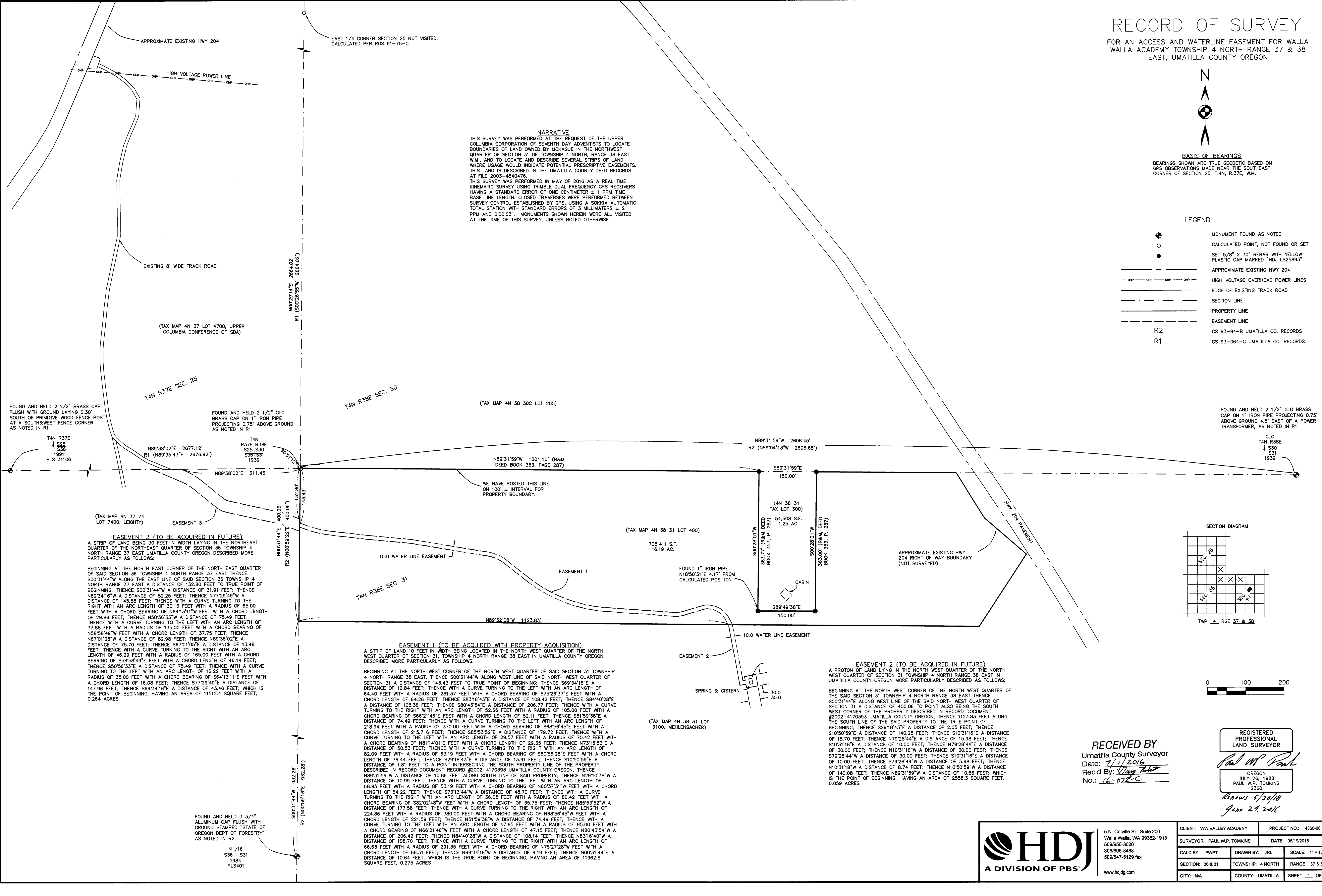
LEGEND

- MONUMENT FOUND AS NOTED
- CALCULATED POINT, NOT FOUND OR SET
-
- APPROXIMATE EXISTING HWY 204
- HIGH VOLTAGE OVERHEAD POWER LINES
- EDGE OF EXISTING TRACK ROAD
- SECTION LINE
- PROPERTY LINE
- EASEMENT LINE
- R2 CS 93-94-B UMATILLA CO. RECORDS
- R1 CS 93-064-C UMATILLA CO. RECORDS

NARRATIVE

THIS SURVEY WAS PERFORMED AT THE REQUEST OF THE UPPER COLUMBIA CORPORATION OF SEVENTH DAY ADVENTISTS TO LOCATE BOUNDARIES OF LAND OWNED BY MCKAGUE IN THE NORTHWEST QUARTER OF SECTION 31 OF TOWNSHIP 4 NORTH, RANGE 38 EAST, W.M., AND TO LOCATE AND DESCRIBE SEVERAL STRIPS OF LAND WHERE USAGE WOULD INDICATE POTENTIAL PRESCRIPTIVE EASEMENTS. THIS LAND IS DESCRIBED IN THE UMATILLA COUNTY DEED RECORDS AT FILE 2003-4540476.

THIS SURVEY WAS PERFORMED IN MAY OF 2016 AS A REAL TIME KINEMATIC SURVEY USING TRIMBLE DUAL FREQUENCY GPS RECEIVERS HAVING A STANDARD ERROR OF ONE CENTIMETER ± 1 PPM TIME BASE LINE LENGTH. CLOSED TRAVERSES WERE PERFORMED BETWEEN SURVEY CONTROL ESTABLISHED BY GPS, USING A SOKKIA AUTOMATIC TOTAL STATION WITH STANDARD ERRORS OF 3 MILLIMETERS ± 2 PPM AND 0'00'03". MONUMENTS SHOWN HEREIN WERE ALL VISITED AT THE TIME OF THIS SURVEY, UNLESS NOTED OTHERWISE.



RECEIVED BY
Umatilla County Surveyor
Date: 7/1/2016
Rec'd By: *Wayne Lewis*
No.: 16-072-C

REGISTERED PROFESSIONAL LAND SURVEYOR

Paul W.P. Tomkins
OREGON
JULY 26, 1988
PAUL W.P. TOMKINS
2360

Renews 6/30/18
June 28, 2016



5 N. Colville St., Suite 200
Walla Walla, WA 99362-1913
509/656-3028
306/695-3488
509/547-8129 fax
www.hdjg.com

CLIENT: WW VALLEY ACADEMY	PROJECT NO.: 4366-00
SURVEYOR: PAUL W.P. TOMKINS	DATE: 05/19/2016
CALC BY: PWPT	DRAWN BY: JRL
SECTION: 38 & 31	TOWNSHIP: 4 NORTH
CITY: N/A	COUNTY: UMATILLA
	RANGE: 37 & 38 EAST
	SHEET 1 OF 1

EASEMENT 3 (TO BE ACQUIRED IN FUTURE)
A STRIP OF LAND BEING 30 FEET IN WIDTH LYING IN THE NORTHEAST QUARTER OF THE NORTHEAST QUARTER OF SECTION 36 TOWNSHIP 4 NORTH RANGE 37 EAST UMATILLA COUNTY OREGON DESCRIBED MORE PARTICULARLY AS FOLLOWS:

BEGINNING AT THE NORTH EAST CORNER OF THE NORTH EAST QUARTER OF SAID SECTION 36 TOWNSHIP 4 NORTH RANGE 37 EAST THENCE S00°31'44"W ALONG THE EAST LINE OF SAID SECTION 36 TOWNSHIP 4 NORTH RANGE 37 EAST A DISTANCE OF 132.80 FEET TO TRUE POINT OF BEGINNING; THENCE S00°31'44"W A DISTANCE OF 31.91 FEET; THENCE N69°34'16"W A DISTANCE OF 52.25 FEET; THENCE N77°29'49"W A DISTANCE OF 145.88 FEET; THENCE WITH A CURVE TURNING TO THE RIGHT WITH AN ARC LENGTH OF 30.13 FEET WITH A RADIUS OF 65.00 FEET WITH A CHORD BEARING OF N64°13'11"W FEET WITH A CHORD LENGTH OF 29.86 FEET; THENCE N50°56'33"W A DISTANCE OF 75.49 FEET; THENCE WITH A CURVE TURNING TO THE LEFT WITH AN ARC LENGTH OF 37.88 FEET WITH A RADIUS OF 135.00 FEET WITH A CHORD BEARING OF N58°58'49"W FEET WITH A CHORD LENGTH OF 37.75 FEET; THENCE N67°01'05"W A DISTANCE OF 82.98 FEET; THENCE N69°38'02"E A DISTANCE OF 75.70 FEET; THENCE S67°01'05"E A DISTANCE OF 13.48 FEET; THENCE WITH A CURVE TURNING TO THE RIGHT WITH AN ARC LENGTH OF 46.29 FEET WITH A RADIUS OF 165.00 FEET WITH A CHORD BEARING OF S58°58'49"E FEET WITH A CHORD LENGTH OF 48.14 FEET; THENCE S50°56'33"E A DISTANCE OF 75.49 FEET; THENCE WITH A CURVE TURNING TO THE LEFT WITH AN ARC LENGTH OF 16.22 FEET WITH A RADIUS OF 35.00 FEET WITH A CHORD BEARING OF S64°13'11"E FEET WITH A CHORD LENGTH OF 16.08 FEET; THENCE S77°29'49"E A DISTANCE OF 147.96 FEET; THENCE S69°34'16"E A DISTANCE OF 43.46 FEET; WHICH IS THE POINT OF BEGINNING, HAVING AN AREA OF 11512.4 SQUARE FEET, 0.264 ACRES

EASEMENT 1 (TO BE ACQUIRED WITH PROPERTY ACQUISITION)
A STRIP OF LAND 10 FEET IN WIDTH BEING LOCATED IN THE NORTH WEST QUARTER OF THE NORTH WEST QUARTER OF SECTION 31, TOWNSHIP 4 NORTH RANGE 38 EAST IN UMATILLA COUNTY OREGON DESCRIBED MORE PARTICULARLY AS FOLLOWS:

BEGINNING AT THE NORTH WEST CORNER OF THE NORTH WEST QUARTER OF SAID SECTION 31 TOWNSHIP 4 NORTH RANGE 38 EAST, THENCE S00°31'44"W ALONG WEST LINE OF SAID NORTH WEST QUARTER OF SECTION 31 A DISTANCE OF 143.43 FEET TO TRUE POINT OF BEGINNING; THENCE S69°34'16"E A DISTANCE OF 12.84 FEET; THENCE WITH A CURVE TURNING TO THE LEFT WITH AN ARC LENGTH OF 64.40 FEET WITH A RADIUS OF 281.37 FEET WITH A CHORD BEARING OF S75°26'37"E FEET WITH A CHORD LENGTH OF 64.26 FEET; THENCE S83°16'43"E A DISTANCE OF 108.42 FEET; THENCE S84°40'28"E A DISTANCE OF 108.36 FEET; THENCE S80°43'54"E A DISTANCE OF 206.77 FEET; THENCE WITH A CURVE TURNING TO THE RIGHT WITH AN ARC LENGTH OF 32.66 FEET WITH A RADIUS OF 105.00 FEET WITH A CHORD BEARING OF S66°21'46"E FEET WITH A CHORD LENGTH OF 52.11 FEET; THENCE S51°59'38"E A DISTANCE OF 74.49 FEET; THENCE WITH A CURVE TURNING TO THE LEFT WITH AN ARC LENGTH OF 218.94 FEET WITH A RADIUS OF 370.00 FEET WITH A CHORD BEARING OF S68°56'45"E FEET WITH A CHORD LENGTH OF 215.76 FEET; THENCE S85°53'52"E A DISTANCE OF 179.72 FEET; THENCE WITH A CURVE TURNING TO THE RIGHT WITH AN ARC LENGTH OF 29.57 FEET WITH A RADIUS OF 70.42 FEET WITH A CHORD BEARING OF N81°14'01"E FEET WITH A CHORD LENGTH OF 29.35 FEET; THENCE N73°15'53"E A DISTANCE OF 50.53 FEET; THENCE WITH A CURVE TURNING TO THE RIGHT WITH AN ARC LENGTH OF 82.09 FEET WITH A RADIUS OF 63.19 FEET WITH A CHORD BEARING OF S60°56'28"E FEET WITH A CHORD LENGTH OF 76.44 FEET; THENCE S29°18'43"E A DISTANCE OF 13.91 FEET; THENCE S10°50'59"E A DISTANCE OF 1.81 FEET TO A POINT INTERSECTING THE SOUTH PROPERTY LINE OF THE PROPERTY DESCRIBED IN RECORD DOCUMENT #2002-4170393 UMATILLA COUNTY OREGON, THENCE N89°31'59"W A DISTANCE OF 10.86 FEET ALONG SOUTH LINE OF SAID PROPERTY; THENCE N29°10'38"W A DISTANCE OF 10.99 FEET; THENCE WITH A CURVE TURNING TO THE LEFT WITH AN ARC LENGTH OF 68.95 FEET WITH A RADIUS OF 53.19 FEET WITH A CHORD BEARING OF N60°37'31"W FEET WITH A CHORD LENGTH OF 64.22 FEET; THENCE S73°13'44"W A DISTANCE OF 48.70 FEET; THENCE WITH A CURVE TURNING TO THE RIGHT WITH AN ARC LENGTH OF 36.05 FEET WITH A RADIUS OF 80.42 FEET WITH A CHORD BEARING OF S82°02'48"W FEET WITH A CHORD LENGTH OF 35.75 FEET; THENCE N85°53'52"W A DISTANCE OF 177.58 FEET; THENCE WITH A CURVE TURNING TO THE RIGHT WITH AN ARC LENGTH OF 224.86 FEET WITH A RADIUS OF 380.00 FEET WITH A CHORD BEARING OF N68°56'45"W FEET WITH A CHORD LENGTH OF 221.59 FEET; THENCE N51°59'38"W A DISTANCE OF 74.49 FEET; THENCE WITH A CURVE TURNING TO THE LEFT WITH AN ARC LENGTH OF 47.65 FEET WITH A RADIUS OF 95.00 FEET WITH A CHORD BEARING OF N66°21'46"W FEET WITH A CHORD LENGTH OF 47.15 FEET; THENCE N80°43'54"W A DISTANCE OF 206.42 FEET; THENCE N84°40'28"W A DISTANCE OF 108.14 FEET; THENCE N83°16'40"W A DISTANCE OF 108.70 FEET; THENCE WITH A CURVE TURNING TO THE RIGHT WITH AN ARC LENGTH OF 66.65 FEET WITH A RADIUS OF 291.35 FEET WITH A CHORD BEARING OF N75°27'28"W FEET WITH A CHORD LENGTH OF 66.51 FEET; THENCE N69°34'16"W A DISTANCE OF 9.19 FEET; THENCE N00°31'44"E A DISTANCE OF 10.64 FEET; WHICH IS THE TRUE POINT OF BEGINNING, HAVING AN AREA OF 11962.8 SQUARE FEET, 0.275 ACRES

EASEMENT 2 (TO BE ACQUIRED IN FUTURE)
A PROTON OF LAND LYING IN THE NORTH WEST QUARTER OF THE NORTH WEST QUARTER OF SECTION 31 TOWNSHIP 4 NORTH RANGE 38 EAST IN UMATILLA COUNTY OREGON MORE PARTICULARLY DESCRIBED AS FOLLOWS:

BEGINNING AT THE NORTH WEST CORNER OF THE NORTH WEST QUARTER OF THE SAID SECTION 31 TOWNSHIP 4 NORTH RANGE 38 EAST THENCE S00°31'44"E ALONG WEST LINE OF THE SAID NORTH WEST QUARTER OF SECTION 31 A DISTANCE OF 400.06 TO POINT ALSO BEING THE SOUTH WEST CORNER OF THE PROPERTY DESCRIBED IN RECORD DOCUMENT #2002-4170393 UMATILLA COUNTY OREGON; THENCE 1123.83 FEET ALONG THE SOUTH LINE OF THE SAID PROPERTY TO THE TRUE POINT OF BEGINNING; THENCE S29°18'43"E A DISTANCE OF 2.05 FEET; THENCE S10°50'59"E A DISTANCE OF 140.23 FEET; THENCE S10°31'16"E A DISTANCE OF 18.70 FEET; THENCE S79°28'44"E A DISTANCE OF 5.98 FEET; THENCE S10°31'16"E A DISTANCE OF 10.00 FEET; THENCE N79°28'44"E A DISTANCE OF 30.00 FEET; THENCE N10°31'16"W A DISTANCE OF 30.00 FEET; THENCE S79°28'44"W A DISTANCE OF 30.00 FEET; THENCE S10°31'16"E A DISTANCE OF 10.00 FEET; THENCE S79°28'44"W A DISTANCE OF 5.98 FEET; THENCE N10°31'16"W A DISTANCE OF 8.74 FEET; THENCE N10°50'59"W A DISTANCE OF 140.08 FEET; THENCE N89°31'59"W A DISTANCE OF 10.86 FEET; WHICH IS THE POINT OF BEGINNING, HAVING AN AREA OF 2558.3 SQUARE FEET, 0.059 ACRES

FOUND AND HELD 3 3/4" ALUMINUM CAP FLUSH WITH GROUND STAMPED "STATE OF OREGON DEPT OF FORESTRY" AS NOTED IN R2

N1/16
S31 | S31
1984
PLS401

FOUND AND HELD 2 1/2" BRASS CAP FLUSH WITH GROUND LAYING 0.30' SOUTH OF PRIMITIVE WOOD FENCE POST AT A SOUTH-WEST FENCE CORNER. AS NOTED IN R1

T4N R37E
S25
S36
1991
PLS 31106

FOUND AND HELD 2 1/2" GLO BRASS CAP ON 1" IRON PIPE PROJECTING 0.75' ABOVE GROUND AS NOTED IN R1

T4N R38E
S25 S30
S361331
1939

FOUND AND HELD 2 1/2" GLO BRASS CAP ON 1" IRON PIPE PROJECTING 0.75' ABOVE GROUND 4.5' EAST OF A POWER TRANSFORMER, AS NOTED IN R1

GLO
T4N R38E
S30
S31
1939