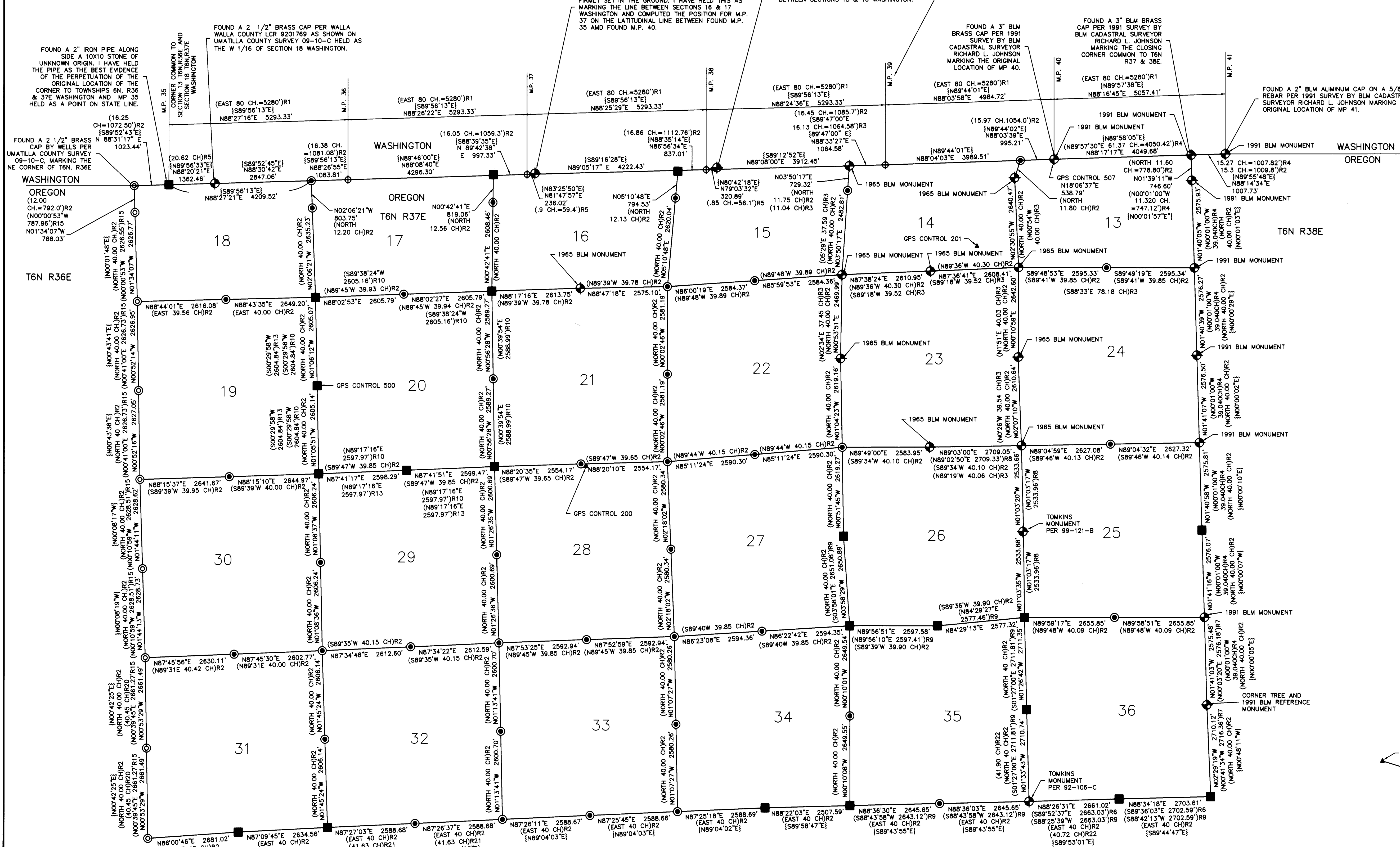


RECORD OF SURVEY

A DEPENDENT RE-SURVEY OF
TOWNSHIP 6 NORTH, RANGE 37 EAST
OF THE WILLAMETTE MERIDIAN,
UMATILLA COUNTY, OREGON

NOTE: THE ONE-HALF MILE POSTS BETWEEN MILE POST 35 AND MILE POST 41 WERE SEARCHED AND NO EVIDENCE WAS FOUND.



BASIS OF BEARINGS
BEARING SHOWN ARE OREGON COORDINATE SYSTEM NORTH ZONE GRID BEARINGS AS DETERMINED BY STATIC GPS OBSERVATIONS AS SHOWN ON THE CONTROL DIAGRAM. DISTANCES ARE HORIZONTAL GROUND LENGTHS. THE COMBINED SCALE AND ELEVATION FACTOR FOR CONVERTING MAP DISTANCES TO STATE PLANE GRID DISTANCES IS 0.99985294



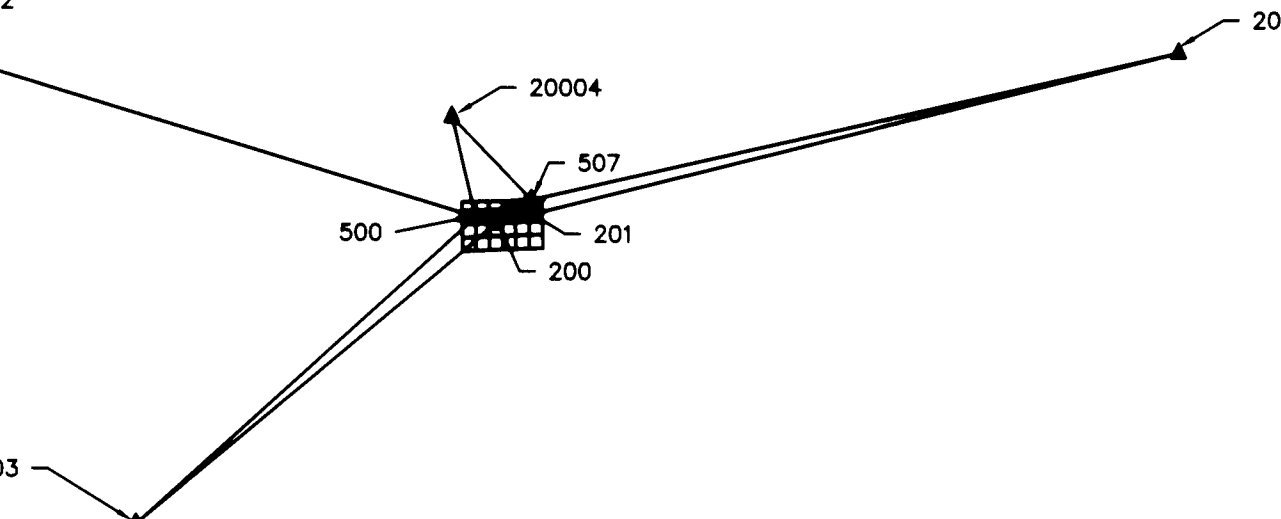
- LEGEND**
- ◆ FOUND MONUMENT AS NOTED. SEE LAND CORNER RECORD FILED CONCURRENTLY WITH THIS SURVEY.
 - FOUND AND ACCEPTED EVIDENCE OF CORNER AND MONUMENTED WITH A 1 1/2" GALVANIZED IRON PIPE WITH A 2 1/2" BRASS CAP UNLESS OTHERWISE NOTED. SEE LAND CORNER RECORD FILED CONCURRENTLY WITH THIS SURVEY.
 - REESTABLISHED CORNER AND MONUMENTED WITH A 1 1/2" GALVANIZED IRON PIPE WITH A 2 1/2" BRASS CAP UNLESS OTHERWISE NOTED. SEE LAND CORNER RECORD FILED CONCURRENTLY WITH THIS SURVEY.
 - ⊙ FOUND 2 3/8" BRASS CAP AND ACCESSORIES AS SHOWN ON SURVEY 09-10-3 AND THE LAND CORNER RECORDS ON FILE WITH THE UMATILLA COUNTY SURVEYOR ASSOCIATION THEREWITH.
 - ⊕ COMPUTED POSITION NOTHING FOUND OR SET
 - ▲ GPS CONTROL POINT
 - M.P. M.P. INDICATES OREGON-WASHINGTON STATE LINE MILE POST NUMBER
 - {N89°44'01"E} MEAN GEODETIC BEARING AS SHOWN
 - (XXX) RX RECORD DIMENSION AS NOTED

- REFERENCES**
- R1 - SURVEY OF THE OREGON-WASHINGTON STATE LINE BY DANIEL MAJOR 1864
 - R2 - ORIGINAL GOVERNMENT LAND OFFICE (GLO) SURVEY OF T6N R37E OREGON BY GEORGE WILLIAMS UNDER CONTRACT NO. 176 DATED JULY 20, 1872
 - R3 - BUREAU OF LAND MANAGEMENT (BLM) DEPENDENT RE-TRACEMENT OF A PORTION OF T6N R37E OREGON BY ALBERT WHITE DATED APRIL 1965
 - R4 - BLM DEPENDENT RE-TRACEMENT OF T6N R37E BY RICHARD JOHNSON AND OTHERS 1987-1990
 - R5 - ORIGINAL GLO SURVEY OF T6N R37E WASHINGTON BY DANIEL MAJOR UNDER HIS CONTRACT NO. 72 DATED MAY 5, 1863
 - R6 - SURVEY BY TOMKINS, UMATILLA COUNTY SURVEY NO. 92-106-C
 - R7 - SURVEY BY TOMKINS, UMATILLA COUNTY SURVEY NO. 97-183-C
 - R8 - SURVEY BY TOMKINS, UMATILLA COUNTY SURVEY NO. 99-121-B
 - R9 - SURVEY BY TOMKINS, UMATILLA COUNTY SURVEY NO. 99-258-C
 - R10 - SURVEY BY TOMKINS, UMATILLA COUNTY SURVEY NO. 01-264-B
 - R11 - SURVEY BY TOMKINS, UMATILLA COUNTY SURVEY NO. 01-132-C
 - R12 - SURVEY BY TOMKINS, UMATILLA COUNTY SURVEY NO. 05-134-C
 - R13 - PARTITION PLAT BY TOMKINS, UMATILLA COUNTY PARTITION PLAT 2005-02
 - R14 - PARTITION PLAT BY TOMKINS, UMATILLA COUNTY PARTITION PLAT 2008-29
 - R15 - SURVEY BY WELLS, UMATILLA COUNTY SURVEY NO. 09-10-C
 - R16 - SURVEY BY WELLS, UMATILLA COUNTY SURVEY NO. 09-45-B
 - R17 - WALLA WALLA COUNTY WASHINGTON ENGINEERS SURVEY OF STATE LINE, UMATILLA COUNTY SURVEY NO. 12-031-C
 - R18 - SURVEY BY HADDOCK (WITNESS TREE), UMATILLA COUNTY SURVEY NO. 12-088-C
 - R19 - WALLA WALLA COUNTY WASHINGTON SURVEY BOOK U, PAGE 172
 - R20 - SURVEY BY KIMBREL, BOOK 1, PAGE 157
 - R21 - SURVEY BY KIMBREL, BOOK 1, PAGE 106
 - R22 - SURVEY BY KIMBREL, BOOK 1, PAGE 248

LAND CORNER RECORDS
LAND CORNER RECORD FORMS FILED CONCURRENTLY WITH THIS SURVEY HAVE EXPLANATIONS, HISTORY AND METHODS OF REESTABLISHMENT OR REMONUMENTATION FOR THE CORNERS MONUMENTED ON THIS SURVEY. LAND CORNER RECORDS FILED WITH SURVEY NO. 09-10-C PERTAIN TO THIS SURVEY AND WERE FILED CONCURRENTLY WITH SAID SURVEY.

OREGON STATE PLANE COORDINATES NORTH ZONE, NAD 83(91) INTERNATIONAL FEET, ARE REPORTED ON THE LAND CORNER RECORD FORMS FILED CONCURRENTLY WITH THIS SURVEY.

CONTROL DIAGRAM
NOT TO SCALE



HISTORY OF SURVEYS
THE BOUNDARY BETWEEN OREGON AND WASHINGTON WAS SURVEYED BY DANIEL MAJORS, ASTRONGER AND SURVEYOR IN 1864, MILE POSTS AND 1/2 MILE POSTS WERE ESTABLISHED ALONG THE STATE LINE.

TOWNSHIP 6 NORTH, RANGE 37 EAST OF THE WILLAMETTE MERIDIAN IN WASHINGTON WAS SURVEYED BY DANIEL MAJORS UNDER HIS CONTRACT NO. 72 DATED MAY 5TH 1863. THE CORNER COMMON TO TOWNSHIP 6 NORTH RANGES 36 AND 37 EAST IN WASHINGTON IS COMMON WITH STATE LINE MILE POST 35.

THE WEST, EAST AND SOUTH LINES OF TOWNSHIP 6 NORTH, RANGE 37 EAST WERE SURVEYED BY ODELL AND LEWIS UNDER CONTRACT NO. 110 DATED FEBRUARY 7, 1865. TOWNSHIP 6 NORTH, RANGE 37 EAST WAS SUBDIVIDED BY GEORGE WILLIAMS UNDER CONTRACT NO. 176 DATED JULY 20, 1872. SECTION CORNERS ABUTTING THE STATE LINE ARE CLOSING CORNERS, CLOSING ON THE STATE LINE. ONE-QUARTER CORNERS ALONG THE STATE LINE WERE NOT ORIGINALLY ESTABLISHED. PORTIONS OF SECTION 14 AND 23 WERE RETRACTED BY BUREAU OF LAND MANAGEMENT SURVEYOR ALBERT WHITE AND THE EAST BOUNDARY OF TOWNSHIP 6 NORTH, RANGE 37 EAST WAS RE-TRACED AND MONUMENTED BY BUREAU OF LAND MANAGEMENT SURVEYOR RICHARD JOHNSON AND OTHER IN 1991.

PRIVATE AND PUBLIC WORKS SURVEYS HAVE BEEN MADE ALONG THE STATE LINE ON THE WASHINGTON SIDE AND ARE RECORDED IN THE WALLA WALLA COUNTY AUDITORS OFFICE OF AT THE WALLA WALLA COUNTY PUBLIC WORKS OFFICE.

IN OREGON OLDER SURVEYS ARE FOUND IN RECORD OF PRIVATE SURVEYS BOOKS 1 AND 2 IN THE UMATILLA COUNTY SURVEYORS OFFICE AND MORE RECENT SURVEYS ARE FOUND IN THE OFFICE OF THE UMATILLA COUNTY SURVEYOR.

NARRATIVE
THE PURPOSE OF THIS SURVEY WAS TO RECOVER OR RE-ESTABLISH ORIGINAL SECTION AND QUARTER SECTION CORNERS IN SECTIONS 13 THROUGH 36 OF TOWNSHIP 6 NORTH, RANGE 37 EAST OF THE WILLAMETTE MERIDIAN. THE WORK WAS AUTHORIZED BY THE UMATILLA COUNTY SURVEYOR OR AND BOARD OF COUNTY COMMISSIONERS AND FUNDED BY THE PUBLIC LAND CORNER MONUMENT FUND.

THE ORIGINAL GLO SURVEYORS SET PRIMARILY POSTS OR STONES. THE ELEVATION VARIES FROM A 1400 FOOT ELEVATION ON THE WEST WHICH IS PRIMARILY CROP OF PASTURE, TO A 3800 FOOT ELEVATION ON THE EAST WHICH IS TIMBERED. THE CENTER IS STEEP OPEN HILLSIDES AND CANYONS. THERE ARE VERY FEW FIELD LINES, FENCES OR ROADS TO INDICATE POTENTIAL SEARCH POSITIONS. INITIAL SEARCH POSITIONS WERE DEVELOPED FROM TOPOGRAPHIC CALL IN THE ORIGINAL NOTES AND BY UTILIZING USGS QUADRANGLE MAPS. THE SEARCH POSITIONS WERE REFINED AS EXISTING CORNERS AND EVIDENCE OF CORNER POSITIONS WERE SURVEYED AND CORNER LOCATIONS WERE SEARCHED AGAIN BASED ON THE REFINED POSITIONS. LOST CORNER POSITIONS WERE COMPUTED BY THE APPROPRIATE METHODS AS SPECIFIED IN THE 2009 BUREAU OF LAND MANAGEMENT MANUAL OF SURVEYING INSTRUCTIONS. WITH THE PRIMARY METHOD BEING DOUBLE OR SINGLE PROPORTIONATE MEASUREMENT.

CONTROL FOR THE PROJECT WAS ESTABLISHED BY A FULLY CONSTRAINED STATIC GPS SURVEY AS SHOWN ON THE CONTROL DIAGRAM USING TRIMBLE R-6 AND R-8 GEODETIC GPS RECEIVERS AND ADJUSTED BY LEAST SQUARES USING TRIMBLE BUSINESS CENTER SOFTWARE.

MEASUREMENTS TO CONTROLLING CORNERS AND CORNERS SET WERE MADE WITH TRIMBLE R-6 AND R-8 GEODETIC GPS RECEIVERS IN STATIC OR REAL TIME

KINEMATIC MODES. CORNERS MEASURED OR ESTABLISHED BY REAL TIME KINEMATIC METHODS WERE VERIFIED BY REDUNDANT MEASUREMENT. THE STANDARD ERRORS FOR THESE RECEIVERS IS 8 MM P 1 PPM RMS IN REAL TIME KINEMATIC MODE AND 3 MM + .05 PPM RMS INS STATIC AND FAST STATIC MODE. SOME CORNERS WERE IN AREAS OBSTRUCTED BY CANYONS OR VEGETATION AND WERE SURVEYED OR ESTABLISHED USING A SOKKIA FIVE SECOND AUTOMATIC TOTAL STATION MAKING SHORT MEASUREMENTS FROM CONTROL POINTS ESTABLISHED BY PLSL METHODS. CORNER ACCESSORIES WERE MEASURED USING A STEEL TAPE AND HAND COMPASS. WE NOTED LOCAL MAGNETIC ATTRACTION WHEN OBSERVING CORNER ACCESSORIES IN SOME AREAS.

THE BEARING SHOWN ARE OREGON STATE PLANE GRID BEARINGS. I HAVE SHOWN MEAN GEODETIC BEARINGS ALONG THE EAST, SOUTH, WEST AND NORTH LINES OF THE TOWNSHIP TO ASSIST IN THE DETERMINATION OF THE MAPPING CONVERGENCE ANGLE. DISTANCES ARE MEAN GROUND DISTANCES THE COMBINED GROUND TO GRID SCALE FACTOR FOR THE PROJECT IS 0.99985294.

RECEIVED BY
Umatilla County Surveyor
Date: 7/8/2015
Rec'd By: *Donna Tolant*
No.: 15-063-C

Certified Federal
Surveyor No. 1051

REGISTERED
PROFESSIONAL
LAND SURVEYOR

Greg S. Flowers
OREGON
JUNE 30, 1997
GREG E. FLOWERS
02820LS
RENEWS 12/31/15
6/29/2015



5 North Colville Street
Walla Walla, WA 99362
509/956-3026
306/995-3488
509/547-5129 fax
Internet: www.hdjdesigngroup.com

CLIENT: UMATILLA COUNTY SURVEYOR	PROJECT NO.: 3725-00
SURVEYOR: GREG E. FLOWERS	DATE: 6-19-2015
CALC BY: GEF	DRAWN BY: GEF
SECTION:	TOWNSHIP: 6 NORTH
CITY: PENDELTON	COUNTY: UMATILLA
SCALE: 1"=1200'	RANGE: 37 EAST
	SHEET ___ OF ___

Point	Northing	Eastng	Elevation	Description
20001	916916.654	9054927.713	3625.53	WSRN CORS - ANAT
20002	925688.301	8541791.711	551.84	WSRN CORS - KENI
20003	733698.823	8647889.845	1363.77	WSRN CORS - PDTN
20004	891966.225	8770861.068	1278.25	WSRN CORS - WALA
200	850626.878	8788216.072	3107.23	1/2" IRON REBAR CONTROL POINT
201	857133.867	8799744.761	3963.16	CP/RBR
500	853017.702	8780258.883	1879.17	MONUMENT 1/4 COR 19/20
507	859692.038	8802018.432	3449.40	MONUMENT - M.P. 40

WSRN CORS = WASHINGTON STATE CONTROL NETWORK CONTINUOUSLY OPERATING REFERENCE STATION