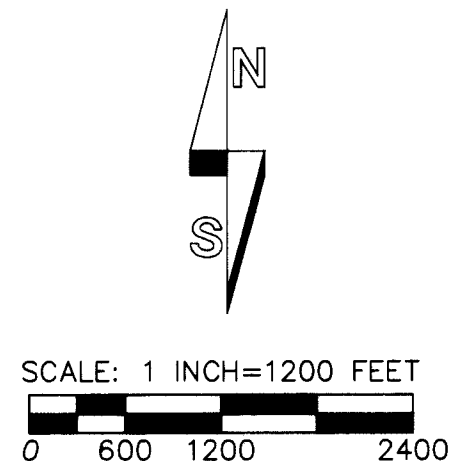


RECORD OF SURVEY



"BASIS OF BEARINGS" AND SCALE/ELEVATION FACTORS:

MAP BEARINGS ARE OREGON STATE PLANE GRID BEARINGS. THE CONVERGENCE ANGLE IS 01'06.41" AT THE SOUTHEAST CORNER OF SECTION 4. ROTATE GRID BEARINGS 01'06.41" COUNTERCLOCKWISE TO ARRIVE AT THE TRUE BEARINGS FOR THE PROJECT. MAP DISTANCES ARE OREGON STATE PLANE GRID DISTANCES. THE COMBINED SCALE AND ELEVATION FACTOR FOR CONVERTING MAP GRID DISTANCES TO GROUND DISTANCES IS 1.00010912. THIS FACTOR IS BASED ON A MEAN PROJECT ELEVATION OF 1265 FEET.

NARRATIVE

THE PURPOSE OF THIS SURVEY WAS TO RECOVER OR REESTABLISH CERTAIN SECTION AND ONE-QUARTER SECTION CORNERS IN TOWNSHIP 3 NORTH, RANGE 31 EAST, W.M. THE WORK WAS AUTHORIZED BY THE UMATILLA COUNTY SURVEYOR AND BOARD OF COUNTY COMMISSIONERS AND FUNDED BY THE PUBLIC LAND CORNER MONUMENT FUND. CORNERS ON PORTIONS OF THE EAST AND SOUTH BOUNDARIES OF THE PROJECT HAVE BEEN RETRACED AND REMONUMENTED UNDER PREVIOUS COUNTY CONTRACTS. THE RETRACEMENT AND REMONUMENTATION OF WEST BOUNDARY OF THE PROJECT IS CURRENTLY UNDER COUNTY CONTRACT WITH CK3 COMPANY.

ORIGINAL GLO SURVEYS IN THE PROJECT AREA WERE MADE BETWEEN 1859 AND 1861. NEARLY ALL ORIGINAL CORNERS WERE ESTABLISHED AS WOOD POSTS, WITH CHARRED STAKES, TRENCHES ETC. A FEW STONES WERE SET FOR CORNERS IN LATER RETRACEMENT AND REESTABLISHMENT SURVEYS MADE BY EARLY COUNTY SURVEYORS. IN FARMED AREAS, MANY OLD FENCES HAVE BEEN REMOVED, BUT EVIDENCE OF OLD FENCE LINES, SUCH AS FIELD BERMS AND FIELD LINES, STILL EXIST, AND WERE UTILIZED TO THE EXTENT POSSIBLE IN REESTABLISHING CORNERS ON THIS SURVEY.

IN CONDUCTING THIS SURVEY WE UTILIZED UMATILLA COUNTY'S RECTIFIED COLOR IMAGERY ON THE OREGON STATE PLANE COORDINATE SYSTEM, TO IDENTIFY POTENTIAL CORNER SEARCH AREAS BASED ON FIELD LINES, ROADS, FENCES, ETC., VISIBLE ON THE IMAGES. TIES TO DETAILS IN SEARCH AREAS MEASURED BY GPS. IN ADDITION TO RECORD SURVEYS, WE CONSULTED OLD COUNTY ROAD NOTES AND NATURAL GAS TRANSMISSION LINE MAPS FOR CORNER TIES. WE ALSO UTILIZED 1956 (AND LATER) AERIAL PHOTOGRAPHY BY THE USDA FARM SERVICE AGENCY TO IDENTIFY HISTORIC FARMED OR POSSESSORY LINES NEAR THE SECTION LINES TO BE LOCATED OR REESTABLISHED.

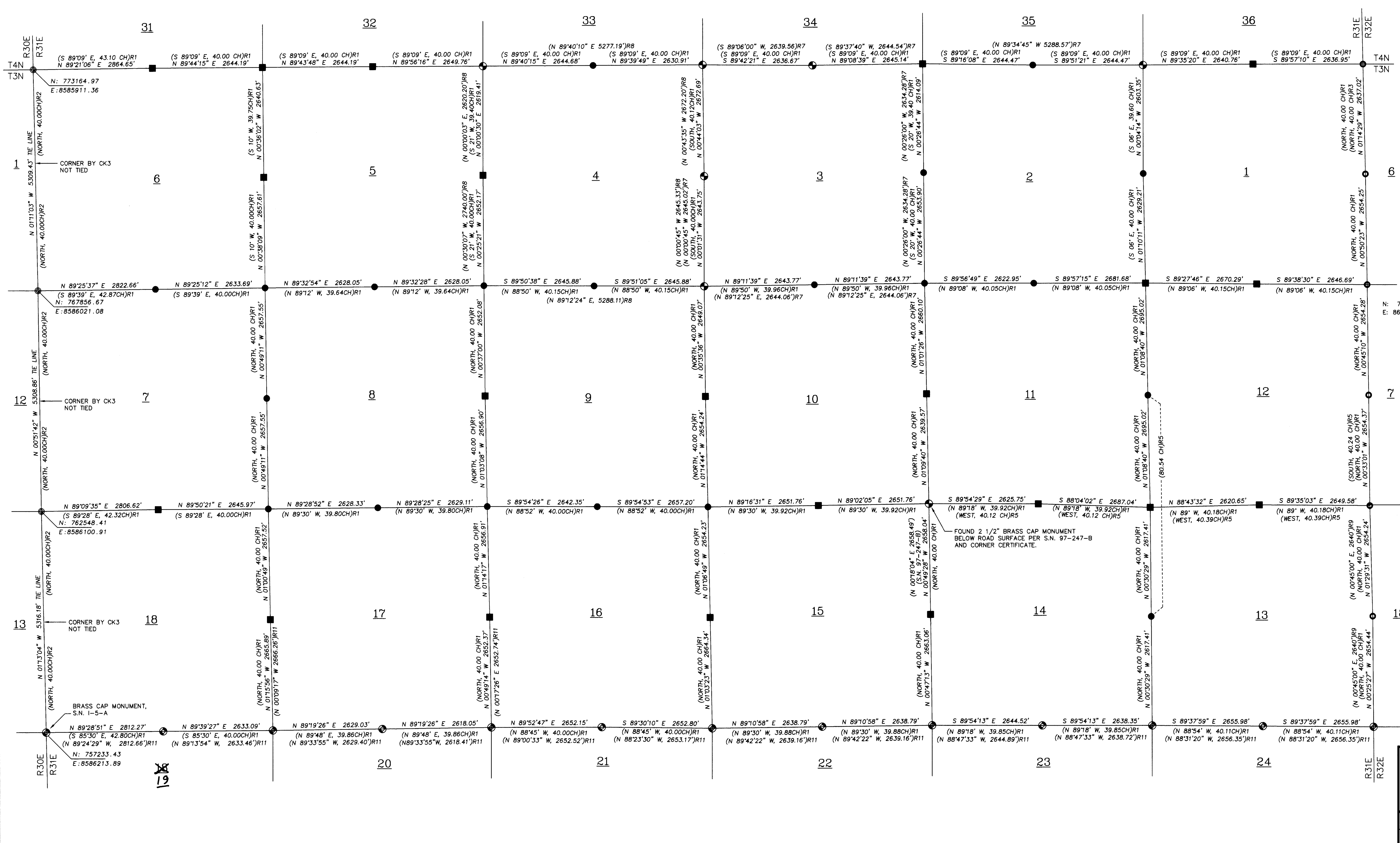
NARRATIVE, CONTINUED:

LAND CORNER RECORD FORMS, FILED CONCURRENTLY WITH THIS SURVEY, SHOULD BE CONSULTED FOR INFORMATION ON EACH CORNER RECOVERED OR REESTABLISHED AND THE ACCESSORIES PLACED TO REFERENCE THE CORNER MONUMENT. ON THE RECORD OF SURVEY MAPS AND LAND CORNER RECORDS, WE REPORTED ONLY THOSE RECORDS PERTINENT TO RECOVERY OR REESTABLISHMENT OF THE CORNERS. IN FARMED AREAS, WE BURIED MOST CORNER MONUMENTS BELOW THE SURFACE OF THE GROUND, TO AVOID DISTURBANCE BY FARM OPERATIONS. CORNER ACCESSORY TIES WERE MEASURED WITH A STEEL TAPE AND COMPASS.

GPS SURVEY MEASUREMENTS WERE MADE WITH A TRIMBLE R8 GEODETIC GPS RECEIVER WITH CORRECTIONS FROM THE OREGON REAL-TIME GPS NETWORK, (ORGN). CURRENT CORRECTED STATE PLANE COORDINATES FROM ORGN ARE ON THE DATUM REALIZATION OF NAD83 (2011) (EPOCH: 2010.00). UMATILLA COUNTY WANTS THE STATE PLANE COORDINATES REPORTED ON NAD83, ADJUSTMENT OF 1991. AFTER PROJECT GPS MEASUREMENTS WERE COMPLETED ON THE CURRENT ORGN DATUM REALIZATION, THE PROJECT CORNER COORDINATES WERE GLOBALLY SHIFTED TO THE NAD83(91) POSITION ABOUT THE SOUTHEAST CORNER OF SECTION 4 BY SHIFTING THE ORGN COORDINATE VALUES SOUTH 0.21' AND WEST 0.01'. BECAUSE OF THE GLOBAL COORDINATE SHIFT AND USE OF THE ORGN RATHER THAN GROUND BASED GEODETIC MONUMENTS FOR CONTROL, THERE WILL BE SOME DIFFERENCES BETWEEN NAD83(91) COORDINATES REPORTED ON EARLIER PROJECTS AND THOSE REPORTED ON THE CURRENT PROJECT.

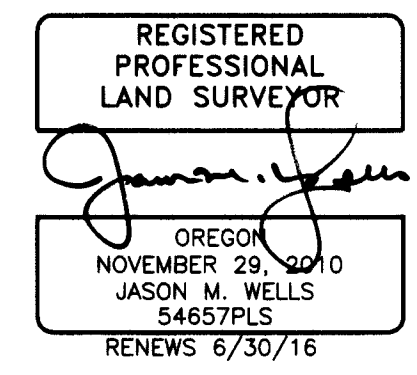
RECOVERED CORNERS, CONTROLLING CORNERS AND REESTABLISHED CORNER POSITIONS WERE TIED OR SET USING REAL TIME KINEMATIC METHODS AND VERIFIED BY SEPARATE OBSERVATIONS.

RECEIVED BY
 Umatilla County Surveyor
 Date: 6/15/2015
 Rec'd By: Wendy Felton
 No.: 15-052-C



- ### LEGEND
- - RE-ESTABLISHED CORNER AND MONUMENTED WITH A 2 3/8" BRASS CAP ON A 1 1/4" BY 30' GALVANIZED IRON PIPE, UNLESS OTHERWISE NOTED. SEE CORNER RECORD FILED CONCURRENTLY WITH THIS SURVEY.
 - - FOUND AND ACCEPTED EVIDENCE OF CORNER AND REMONUMENTED WITH A 2 3/8" BRASS CAP ON A 1 1/4" BY 30' GALVANIZED IRON PIPE UNLESS OTHERWISE NOTED. SEE CORNER RECORD FILED CONCURRENTLY WITH THIS SURVEY.
 - ⊙ - FOUND 2 3/8" BRASS CAP ON IRON PIPE MONUMENT OF RECORD FROM S.N. M-108-B, UNLESS OTHERWISE NOTED.
 - ⊙ - INDICATES BRASS CAP MONUMENT FROM RECORD SURVEY NO. 06-462-C UNLESS OTHERWISE NOTED.
 - ⊙ - INDICATES BRASS CAP MONUMENT FROM RECORD SURVEY NO. 13-529-C UNLESS OTHERWISE NOTED.
 - ⊙ - INDICATES TIED BRASS CAP MONUMENT FROM SURVEY UNDERWAY BY CK3.
 - CH - INDICATES SURVEY CHAIN, 1 CHAIN EQUALS 66 FEET.
 - S.N. - INDICATES SURVEY NUMBER OF SURVEY RECORDED AT UMATILLA COUNTY SURVEYORS OFFICE.
 - R.P.S. - INDICATES "RECORD OF PRIVATE SURVEY" BOOK, FOUND IN COUNTY SURVEYORS OFFICE.
 - N: 742038.96 - INDICATES OBSERVED COORDINATE VALUE OR COORDINATE VALUE CALCULATED FROM PREVIOUS GPS TIES.
 - E: 8645120.09
 - (XOX)R1 - RECORD DIMENSION FROM ORIGINAL SURVEY BY S. PAYNE, UNDER CONTRACT NO. 100, DATED 08/01/1861.
 - (XOX)R2 - RECORD DIMENSION FROM GLO SURVEY BY D. THOMPSON, UNDER CONTRACT NO. 81, DATED 07/08/1859.
 - (XOX)R3 - RECORD DIMENSION FROM SURVEY NO. 13-529-C, JASON WELLS, 2006.
 - (XOX)R5 - RECORD DIMENSION FROM R.P.S. BOOK 1, PAGE 424-425, KIMBRELL, 1900.
 - (XOX)R7 - RECORD DIMENSION FROM SURVEY NO. M-108-B, KRUMBEIN, 1976.
 - (XOX)R8 - RECORD DIMENSION FROM SURVEY NO. S-53-B, KRUMBEIN, 1979.
 - (XOX)R9 - RECORD DIMENSION FROM SURVEY NO. Q-521-C, HAYES, NO DATE.
 - (XOX)R11 - RECORD DIMENSION FROM SURVEY NO. 06-462-C, BILL WELLS, 2006.

LAND CORNER RECORD FORMS
 LAND CORNER RECORD FORMS FILED CONCURRENTLY WITH THIS SURVEY CONTAIN EXPLANATIONS, HISTORIES, AND METHODS OF RE-ESTABLISHMENT AND REMONUMENTATION FOR CORNERS WITNESSED ON THIS SURVEY. CONSULT LAND CORNER RECORDS FOR SPECIFIC INFORMATION ON EACH CORNER. OREGON STATE PLANE COORDINATES, NORTH ZONE, NAD 83(91) ARE REPORTED ON LAND CORNER RECORD FORMS.



WELLS SURVEYING 200 SE HAILEY SUITE 108 P.O. BOX 1696 PENDLETON, OR 97801 PHONE: (541) 276-6362		PROJECT: \C201583-91 SURVEY FOR: UMATILLA COUNTY	
DATE: 5/2015	DR. BY: DMT	LOCATED IN SECTIONS 1-18, TOWNSHIP 3 NORTH, RANGE 31 EAST, W.M., UMATILLA COUNTY, OREGON.	
CK. BY: WRW	NO: 14-1519		