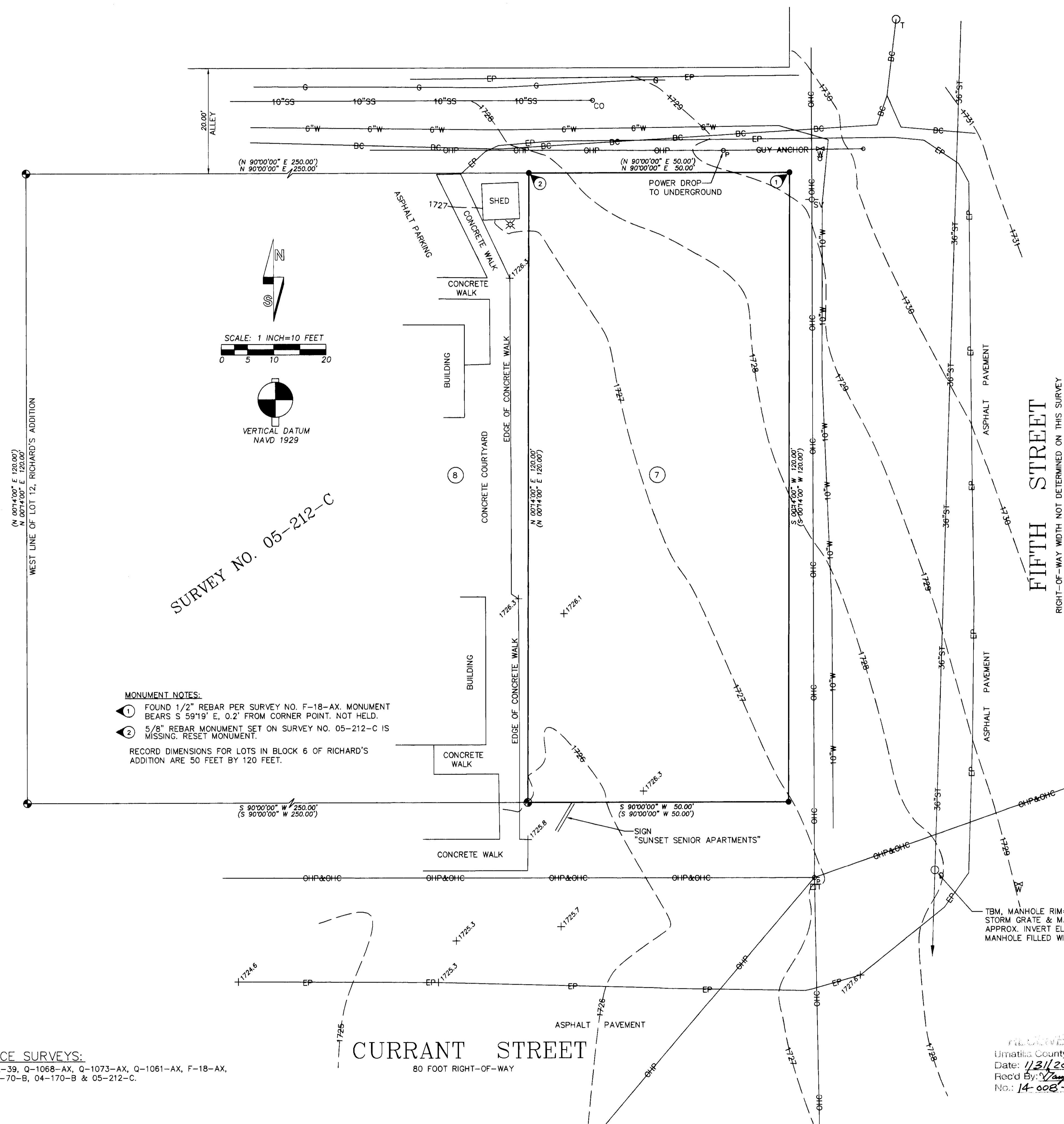


RECORD OF SURVEY & TOPOGRAPHIC SURVEY



NARRATIVE

THIS SURVEY WAS PERFORMED AT THE REQUEST OF SUNSET HOUSING, INC. THE PURPOSE OF THE SURVEY WAS TO MAKE A TOPOGRAPHIC SURVEY, AND RECOVER OR REMONUMENT THE FOUR EXTERIOR CORNERS OF LOT 7, BLOCK 6, RICHARD'S ADDITION, TO THE TOWN, NOW CITY OF ATHENA.

THE OVERALL BOUNDARY OF BLOCK 6 WAS DETERMINED IN PREVIOUS SURVEY NO. 05-212-C. WHEN THE EXTERIOR BOUNDARY OF 8 THROUGH 12 OF BLOCK 6 WAS MONUMENTED. I USED MONUMENT ESTABLISHED ON SAID SURVEY NO. 05-212-C FOR CONTROL AND RECOVERED OR REMONUMENTED THE EXTERIOR BOUNDARY OF LOT 7 AS SHOWN.

THE SURVEY WAS MADE BY A TWO PERSON CREW USING A LEICA TCR 803, THREE SECOND TOTAL STATION BY A COMBINATION OF CLOSED TRAVERSE AND RADIAL TIES. CONTROL TIES AND NEW MONUMENTS WERE ESTABLISHED BY RADIAL METHODS AND VERIFIED BY SEPARATE OBSERVATIONS.

LEGEND

- - FOUND 1 1/4" YELLOW PLASTIC CAP MARKED "OR PLS 1106 WA PLS 17372", ON 5/8" REBAR PER SURVEY NO. 05-212-C.
- - SET 1 1/4" PURPLE PLASTIC CAP MARKED "WELLS SURVEYING 54657PLS", ON 5/8" BY 24" REBAR.
- (XOX) - RECORD DIMENSION REPORTED ON SURVEY NO. 05-212-C.
- α - FIRE HYDRANT.
- ⊕ - WATER VALVE.
- ⊙ - SANITARY SEWER CLEAN OUT, INVERT DEPTH NOT DETERMINED.
- ⊙ - STORM DRAIN GRATE & MANHOLE.
- ⊙ - POWER POLE.
- ⊙ - COMMUNICATION LINE POLE.
- ⊙ - TELEPHONE MANHOLE.
- ⊙ - TELEPHONE PEDESTAL.
- ⊙ - OUTDOOR LIGHT.
- ⑦ - INDICATES LOT NUMBER, BLOCK 6, RICHARD'S ADDITION.
- +1728.1 - GROUND SPOT ELEVATION.
- BC— - INDICATES BURIED COMMUNICATION LINE.
- OHC— - INDICATES OVERHEAD TELEPHONE LINE.
- OHP— - INDICATES OVERHEAD POWERLINE.
- - NATURAL GAS LINE.
- 6"W— - WATER LINE, SIZE INDICATED.
- 10"SS— - SANITARY SEWER LINE, SIZE INDICATED.
- 36"ST— - STORM SEWER LINE, SIZE INDICATED.
- EP— - INDICATES EDGE OF PAVEMENT.

MONUMENT NOTES:

① FOUND 1/2" REBAR PER SURVEY NO. F-18-AX. MONUMENT BEARS S 59°19' E, 0.2' FROM CORNER POINT. NOT HELD.

② 5/8" REBAR MONUMENT SET ON SURVEY NO. 05-212-C IS MISSING. RESET MONUMENT.

RECORD DIMENSIONS FOR LOTS IN BLOCK 6 OF RICHARD'S ADDITION ARE 50 FEET BY 120 FEET.

UTILITY NOTES:

1. BURIED UTILITIES WERE LOCATED PER "CALL BEFORE YOU DIG" LOCATE REQUEST ON SURVEY NO. 05-212-C. IN 2005. PAINTED LINES MARKED BY VARIOUS UTILITY COMPANIES IN 2005 WERE TIED DOWN BY SURVEY AT THAT TIME AND ARE SHOWN ON THIS PRESENT SURVEY. BURIED UTILITY LOCATIONS SHOULD BE FIELD VERIFIED PRIOR TO CONSTRUCTION. SURVEYOR ACCEPTS NO RESPONSIBILITY FOR LOCATION AND DEPTHS OF BURIED UTILITY LINES.
 2. SANITARY SEWER AND WATER LINE PIPE DIAMETERS WERE OBTAINED FROM ATHENA PUBLIC WORKS DEPARTMENT AND WERE NOT VERIFIED IN THE FIELD.
 3. THE STORM SEWER IN FIFTH STREET APPEARS TO BE A 36" DIAMETER LINE. THE LINE BEGINS AT FIFTH AND MAIN STREETS AND FLOWS SOUTH, TERMINATING AT WILDHORSE CREEK.
- UTILITY SERVICE PROVIDED BY:
 ELECTRICAL - PACIFIC POWER AND LIGHT.
 CABLE TV - CHARTER COMMUNICATIONS.
 PHONE - CENTURYLINK.
 NATURAL GAS - CASCADE NATURAL GAS.
 WATER, SANITARY AND STORM SEWER - CITY OF ATHENA PUBLIC WORKS.

REFERENCE SURVEYS:
 SURVEY NO. L-39, Q-1068-AX, Q-1073-AX, Q-1061-AX, F-18-AX,
 03-047-B, N-70-B, 04-170-B & 05-212-C.

RECEIVED BY
 Umatilla County Surveyor
 Date: 1/31/2014
 Rec'd By: [Signature]
 No.: 14-008-C

REGISTERED PROFESSIONAL LAND SURVEYOR
 [Signature]
 OREGON
 NOVEMBER 28, 2010
 JASON M. WELLS
 54657PLS
 RENEWS 6/30/14

WELLS SURVEYING
 1 SW NYE AVENUE, SUITE B
 P.O. BOX 1696
 PENDLETON, OREGON
 PHONE: (541) 276-6362

DATE: 01/14 DR. BY: WRW
 CK. BY: JMW NO: 14-1475

PROJECT:
 SURVEY FOR:
SUNSET HOUSING, INC.
 LOT 7, BLOCK 6,
 RICHARD'S ADDITION, LOCATED
 IN THE S1/2 OF SECTION 19,
 T4N, R35E., W.M.,
 CITY OF ATHENA,
 UMATILLA COUNTY, OREGON.