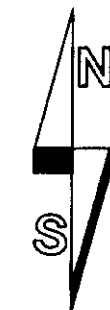


RECORD OF SURVEY



SCALE: 1 INCH=800 FEET
0 400 800 1600

REPORTED BEARINGS, DISTANCES & COORDINATES ARE OREGON STATE PLANE, NORTH ZONE, NAD 83(91), INTERNATIONAL FEET UNITS.

LEGEND

- ✱ - SET 2 3/8" BRASS CAP ON 1 1/4" BY 30" GALVANIZED IRON PIPE. CORNER RECORD FILED CONCURRENTLY WITH THIS MAP.
- ⊙ - FOUND MONUMENTED SECTION OR 1/4 SECTION CORNER OF RECORD FROM SURVEY NO. 03-313-C, 03-314-C, Q-783-C, OR PARTITION PLAT NO. 1990-10. BRASS CAP ON GALV. IRON PIPE MONUMENT UNLESS OTHERWISE NOTED.
- ⊕ - CALCULATED SECTION OR 1/4 SECTION CORNER, AS NOTED.
- CH - INDICATES DIMENSION IN CHAINS. 1 CHAIN = 66.00 FEET.
- (XOX)R1 - RECORD DIMENSION FROM GLO SURVEY BY ODELL & LEWIS UNDER CONTRACT NO. 110, DATED FEBRUARY 7, 1865.
- (XOX)R2 - RECORD DIMENSION FROM UMATILLA COUNTY SURVEY NO. 03-314-C. DISTANCES ARE GROUND DISTANCES.
- (XOX)R3 - RECORD DIMENSION FROM UMATILLA COUNTY SURVEY NO. 03-313-C. DISTANCES ARE GROUND DISTANCES.
- (XOX)R4 - RECORD DIMENSION FROM UMATILLA COUNTY PARTITION PLAT NO. 1990-10. DISTANCES ARE GROUND DISTANCES.
- (XOX)R5 - RECORD DIMENSION FROM UMATILLA COUNTY SURVEY NO. Q-783-C. DISTANCES ARE GROUND DISTANCES.

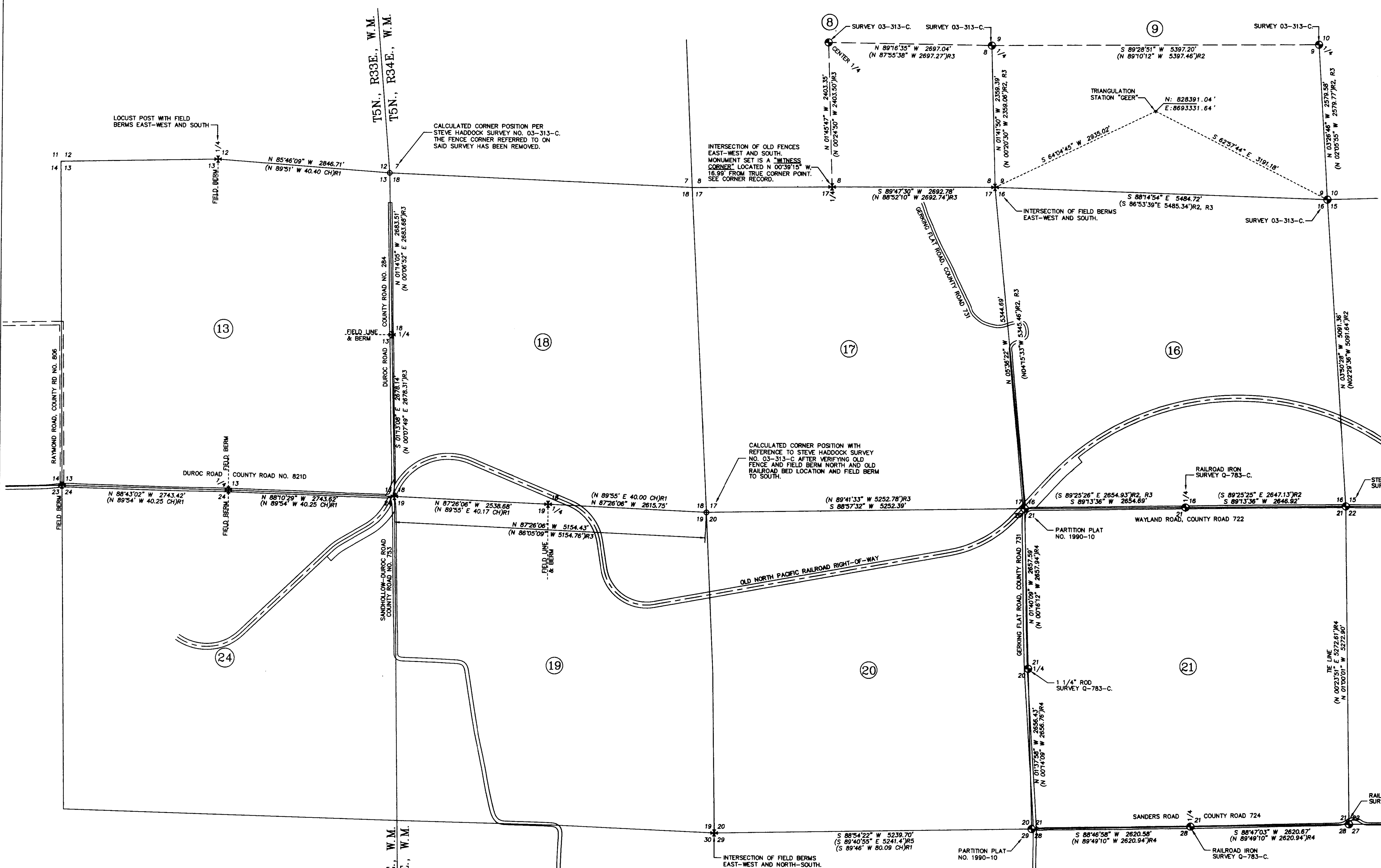
NOTE:
SEE CORNER RECORDS FILED CONCURRENTLY WITH THIS RECORD OF SURVEY.

NARRATIVE:

THE PURPOSE OF THIS RECORD OF SURVEY IS TO DOCUMENT STATE PLANE COORDINATES AND LOCATIONS OF CERTAIN 1/4 AND SECTION CORNERS REESTABLISHED OR REMONUMENTED IN 2009 AND 2010. CORNER RECORDS FOR EACH MONUMENTED CORNER ARE FILED CONCURRENTLY WITH THIS SURVEY.

THE MONUMENTED LOCATIONS WERE DETERMINED AS NOTED ON THIS RECORD OF SURVEY AND ON THE CORNER RECORDS. THE MONUMENTED LOCATIONS WERE DETERMINED DURING CONSTRUCTION AND "AS-BUILT" OF CERTAIN WIND TURBINE SITES AND ASSOCIATED INFRASTRUCTURE. A FINAL "AS-BUILT ALTA" SURVEY HAD BEEN ANTICIPATED BUT HAS NOT YET OCCURRED.

MEASUREMENTS FOR THIS RECORD OF SURVEY WERE MADE BY GPS STATIC AND REAL TIME KINEMATIC METHODS WITH GEODETIC GPS RECEIVERS. CONTROL TIES AND NEW MONUMENT SETS WERE VERIFIED BY REDUNDANT OBSERVATIONS. THE "PROJECT" STATE PLANE COORDINATE FOR EXISTING TRIANGULATION STATION "GEER" IS SHOWN WHICH REFERENCES THIS SURVEY AND THE STATE PLANE COORDINATES SHOWN ON THE CORNER RECORDS TO THE WORLD COORDINATE SYSTEM. ALL MEASURED BEARINGS AND DISTANCES REPORTED ON THIS RECORD OF SURVEY ARE STATE PLANE GRID BEARINGS AND DISTANCES.



RECEIVED BY
Umatilla County Surveyor
Date: 4/3/2012
Rec'd By: [Signature]
No.: 12-029-1

REGISTERED PROFESSIONAL LAND SURVEYOR
Will R. Wells
OREGON
JULY 22, 1977
WILLIAM R. WELLS
1106
RENEWS 6/30/12

WELLS SURVEYING
1 SW NYE AVENUE, SUITE B
P.O. BOX 1896
PENDLETON, OREGON
PHONE: (541) 276-6362

DATE: 01/12 DR BY: WRW/DMT
CK BY: WRW NO: 09-1212

PROJECT: VRECORD012011
MAP SHOWING SECTION 1/4 SECTION CORNERS REMONUMENTED
LOCATED IN SECTION 13, T5N., R33E., W.M. & SECTIONS 8, 9 & 16 THROUGH 21, T5N., R34E., W.M., UMATILLA COUNTY, OREGON.