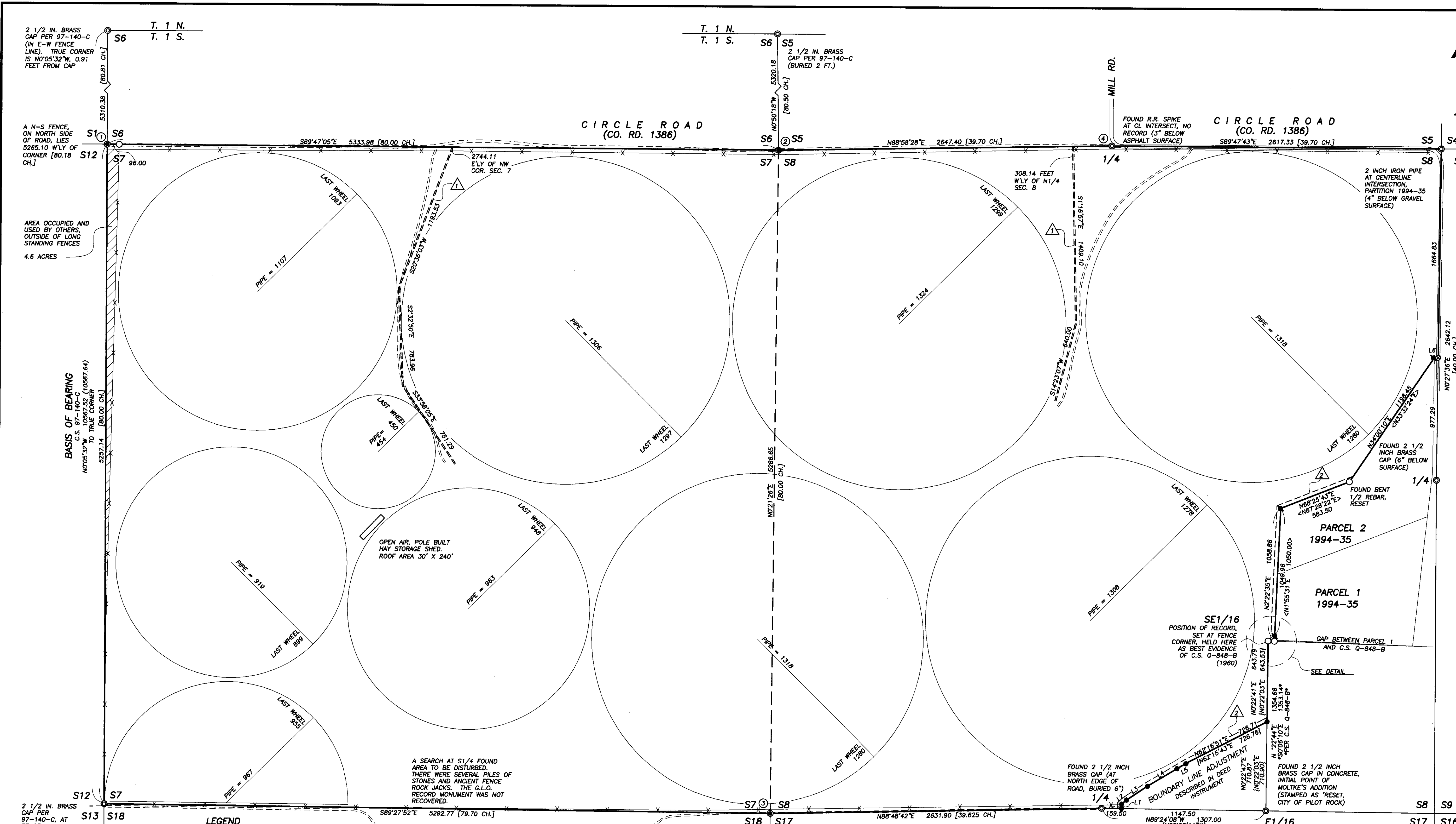


ALTA / ACSM SURVEY

SECTIONS 7 AND 8
TWN. 1 S., RA. 32 E., W.M.
UMATILLA COUNTY,
OREGON



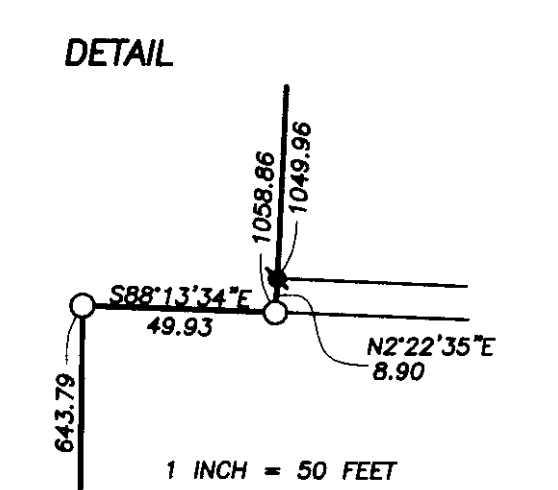
NARRATIVE

THIS SURVEY ESTABLISHES THE LINES OF INSTRUMENT 2008-5430222, OFFICE OF UMATILLA COUNTY RECORDS.

DURING THE COURSE OF THIS SURVEY THREE SECTION CORNERS WERE REESTABLISHED BY PROPORTIONATE METHODS. DURING RESEARCH A CONTRADICTION WAS REVEALED IN THE G.L.O. RECORDS. THE FIELD NOTES FOR THE LINE BETWEEN RANGES 31 EAST AND 32 EAST, SURVEYED BY DAVID THOMPSON, CONTRACT 106, 1864; DIFFERED FROM THE PUBLISHED PLAT. COUNTY ROAD RECORDS SHOW THE ALIGNMENT OF CIRCLE ROAD (FORMERLY CO. RD. 210), WAS SURVEYED IN 1884 BY THE COUNTY SURVEYOR, ARNOLD, USING A SINGLE PROPORTION 1 HERE HELD THE FIELD NOTES OVER THE PLAT WHICH PLACES THE NORTHWEST CORNER OF SECTION 7 WITHIN THE EXISTING RIGHT-OF-WAY FENCES.

THE NORTHEAST AND SOUTHEAST CORNERS OF SECTION 7 WERE REESTABLISHED BY THE DOUBLE PROPORTION METHOD.

THIS WORK WAS PERFORMED USING TOPCON G.P.S. RECEIVERS.



- LEGEND**
- FOUND PUBLIC LAND CORNER AS NOTED
 - FOUND 5/8 INCH IRON REBAR PER C.S. 08-139-B
 - FOUND 1/2 INCH IRON REBAR PER PARTITION 1994-35
 - SET PROPORTIONATE PUBLIC LAND CORNER PER B.L.M. MANUAL OF SURVEYING INSTRUCTIONS, 1973. SEE REMONUMENTATION NOTES
 - SET 5/8 INCH IRON REBAR WITH YELLOW PLASTIC CAP MKD: "OR 2872 LS, WA 41083," ALSO BEING THE REFERENCE MONUMENTS (RM) ESTABLISHED FOR THE CORNER REMONUMENTATIONS SHOWN HEREON
 - ⊙ CALCULATED POSITION, MONUMENT NEITHER FOUND OR SET
 - () RECORD MEASUREMENT PER C.S. 97-140-C
 - { } RECORD MEASUREMENT PER C.S. 08-139-B
 - < > RECORD MEASUREMENT PER PARTITION 1994-35
 - [] G.L.O. RECORD
 - C.S. COUNTY SURVEY
 - △ EASEMENT IDENTIFIER, SEE NOTES
 - PROPERTY LINES, DEEDED
 - AREA OCCUPIED BY OTHERS
 - ASPHALT ROAD
 - GRAVEL / DIRT ROAD

SURVEYOR'S CERTIFICATE
To JEFF HILLBERG, FARMLAND FINANCIAL SERVICES

This is to certify that this map and the Survey on which it is based were made in accordance with the "Minimum Standard Detail Requirements for ALTA/ACSM Land Title Surveys," jointly established and adopted by ALTA and NSPS in 2005, and includes items: 4 and 7(a) of Table A thereof. Pursuant to the Accuracy Standards as adopted by ALTA and NSPS and in effect on the date of this certification, undersigned further certifies that in my professional opinion, as a Land Surveyor in the State of Oregon, the Relative Positional Accuracy of this survey does not exceed that which is specified therein.

Date _____

AREAS MEASURED BY SURVEY

1186.36 ACRES	ACREAGE WITHIN DEEDED BOUNDARIES, INCLUDING AREAS WITH COUNTY ROAD EASEMENTS
1170.32 ACRES	ACREAGE WITHIN LONG STANDING FENCE LINES SHOWN HEREON

LINE TABLE

L1	N0°35'24"E	35.93
	[S0°34'49"W	35.94]
L2	N49°43'59"E	51.20
	[S49°16'56"W	50.95]
L3	N56°04'42"E	198.84
	[S56°10'39"W	199.13]
L4	N58°53'33"E	272.91
	[S58°51'43"W	272.87]
L5	N60°36'54"E	81.20
	[S60°36'09"W	81.26]
L6	S89°32'24"E	30.00

REMONUMENTATION NOTES

MONUMENT 1 (STAMPED AS SHOWN)
SET 2 1/2 INCH BRASS CAP, 4" BELOW SURFACE, FROM WHICH:
A RM BEARS N25°43'E, 22.35 FT. A RM BEARS S58°40'E, 76.21 FT.
A RM BEARS S29°01'W, 45.24 FT. A RM BEARS N51°08'W, 32.08 FT.
A POST WITH "SURVEY MARKER, DO NOT DISTURB" SIGN STANDS 10 FT. NORTH

MONUMENT 2
SET 1 INCH STEEL WASHER MKD: '2872,' DRILLED INTO BASALT BEDROCK, 4" BELOW SURFACE, FROM WHICH:
A RM BEARS N19°37'E, 29.48 FT. A RM BEARS S27°34'E, 28.15 FT.
A RM BEARS S25°13'W, 40.34 FT. A RM BEARS N24°47'W, 31.61 FT.
SIGN "SURVEY MARKER, DO NOT DISTURB" WERE PLACED ON POWER POLES AT RM'S 1 AND 2

MONUMENT 3 (STAMPED AS SHOWN)
SET 2 1/2 INCH BRASS CAP, 4" BELOW SURFACE, FROM WHICH:
A RM BEARS N45°02'E, 45.48 FT. A RM BEARS S45°29'E, 35.92 FT.
A RM BEARS S45°47'W, 37.40 FT. A RM BEARS N44°58'W, 43.25 FT.
A POST WITH "SURVEY MARKER, DO NOT DISTURB" SIGN STANDS 15 FEET NORTH

MONUMENT 4
FOUND RAILROAD SPIKE, FROM WHICH:
A RM BEARS N26°03'E, 49.29 FT. A RM BEARS S37°09'E, 28.55 FT.
A RM BEARS S42°54'W, 36.05 FT. A RM BEARS N29°57'W, 65.03 FT.

EASEMENT NOTES

△ REEL 15, PAGE 1786. TWO EASEMENTS TO PACIFIC POWER AND LIGHT COMPANY, EACH BEING 5 FEET ON EITHER SIDE OF THE SHOWN CENTERLINE (LOCATED BY POWER POLE LOCATIONS).

△ INSTRUMENT NO. 2008-5420196. TWO EASEMENTS TO COLUMBIA POWER COOPERATIVE ASSOCIATION, INC., EACH BEING 30 FEET WIDE AND PARALLEL WITH PROPERTY LINES.

EASEMENTS NOT LOCATABLE:

GRANTEE: COLUMBIA POWER COOPERATIVE ASSOCIATION
BOOK 221, PAGE 353 RECORDED NOVEMBER 20, 1954

GRANTEE: PACIFIC POWER AND LIGHT COMPANY
BOOK 264, PAGE 467 RECORDED AUGUST 30, 1961

THE COUNTY RECORDS SHOW ARE EASEMENTS. THE WIDTHS OF EACH ARE:
CIRCLE ROAD, SOUTH AND EAST OF THE INTERSECTION WITH MILL ROAD, WIDTH = 60.00 FEET.
CIRCLE ROAD WEST OF INTERSECTION WITH MILL ROAD, WIDTH = 40.00 FEET.
STOCKDRIVE ROAD, WIDTH = 40.00 FEET.

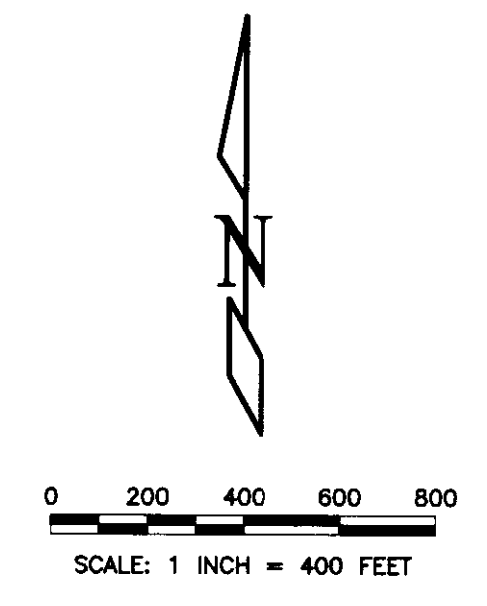
2 1/2 IN. BRASS CAP PER 97-140-C (IN E-W FENCE LINE). TRUE CORNER IS N0°05'32"W, 0.91 FEET FROM CAP

A N-S FENCE, ON NORTH SIDE OF ROAD, LIES 5285.10 WLY OF CORNER [80.18 CH.]

AREA OCCUPIED AND USED BY OTHERS, OUTSIDE OF LONG STANDING FENCES
4.6 ACRES

BASIS OF BEARING
C.S. 97-140-C
N0°05'32"W TO TRUE CORNER
5257.14 [80.00 CH.]

2 1/2 IN. BRASS CAP PER 97-140-C, AT FENCE COR.



EDWARDS SURVEYING, L.L.C.
P.O. BOX 763 HERMISTON OR 97838
541-567-3336

JOB: 1108049
SURVEYED BY: R.J.L. RLS
DWG BY: R.J.L. CKD BY: GDE
SEPTEMBER 2011

REGISTERED PROFESSIONAL LAND SURVEYOR
Rodney J. Lewis
OREGON
JULY 14, 1988
RODNEY J. LEWIS
2872
EXPIRES 12/31/12