

**NARRATIVE:**

THE PURPOSE OF THIS SURVEY IS TO MONUMENT AND REFERENCE GENERAL LAND OFFICE CORNERS A MINIMUM OF EVERY TWO MILES WITHIN TOWNSHIP 2 NORTH, RANGE 29 EAST, WILLAMETTE MERIDIAN, UMATILLA COUNTY, UNDER A CONTRACT WITH UMATILLA COUNTY DATED JULY 2005. THIS TOWNSHIP WAS ORIGINALLY SURVEYED BY DAVID THOMPSON UNDER CONTRACT #83. ALL MONUMENTS SET WERE POSTS WITH MOUNDS OF EARTH EXCEPT FOR THE S 1/4 CORNER OF SECTION 36 WHICH WAS A POST IN A MOUND OF STONE. BRIT PRIMM FOUND SAID POST AND MOUND AND MONUMENTED IT IN 2007 IN HIS SURVEY OF T 1 N, R 29 E. PRIMM SINGLE PROPORTIONED THE NE COR. SEC. 5, T 1 N, R 29 E AND IT FALLS IN A CULTIVATED FIELD. FOR THAT SAME CORNER (SE SEC. 32, T 2 N, R 29 E) I SET A BRASS CAP AT A FENCE CORNER WHICH IS 21.59 FEET EAST OF PRIMM'S CORNER.

AT THE NW CORNER OF SECTION TWO I SET A BRASS CAP AT A FENCE CORNER WHICH I HAD ASSUMED WAS THE FENCE CORNER SHOWN ON WAYNE HARRIS' 1962 SURVEY FOR PENDLETON AND CUNHA RANCHES. AFTER TRYING MORE CORNERS AND EVALUATING THE DATA AND AFTER BOB ENGLISH WAS SURVEYING THE TOWNSHIP LINE FOR HIS COUNTY SURVEY IN T 3 N, R 29 E, WE DECIDED TO RESET THAT MONUMENT BY RETRACING HARRIS' SURVEY FROM HIS FOUND MONUMENTS. ENGLISH RESET MY BRASS CAP AND SUPPLIED ME WITH THE COORDINATES.

I ESTABLISHED THE SW CORNER OF SECTION 7 BY RETRACING TERRY HAMBY'S 1980 SURVEY FOR U.E.C.A.

COORDINATES ARE NAD 83/91. THE CONTROL POINTS USED WERE SUPPLIED BY STEVE HADDOCK FROM HIS 2004 UMATILLA COUNTY PROJECT. THEY ARE THE CORNERS OF THIS TOWNSHIP AND THE BRASS CAP AT THE NORTHEAST CORNER OF SECTION 5. HIS POSITIONS WERE BASED ON GPS TIES TO TRI STATIONS BIG HILL RESET, STANFIELD EAST BASE RESET AND CBL 1.

DATA WAS COLLECTED USING REAL TIME KINEMATIC FROM THESE POINTS AND OTHER RANDOM POINTS SET WITHIN THE PROJECT. THE INSTRUMENT USED WAS A TOPCON HIPER+ BEARINGS AND DISTANCES SHOWN ARE TRUE. THE COMBINED SCALE FACTOR IS .99987247 AND THE TA IS 0° 55' 54\"/>

| COR. | PT. # | DESCRIPTION        | OREGON NORTH STATE PLANE NAD 83/91 NORTHING EASTING |            |
|------|-------|--------------------|---|------------|
| A1   | 2     | 2 3/8" BC          | 739849.13   | 8521921.90 |
| A5   | 4022  | 2 3/8" BC          | 740003.31   | 8527775.24 |
| A9   | 1     | 2 1/2" BC          | 740144.22   | 8533052.02 |
| A13  | 2000  | 3" I.P. & I. PLATE | 740313.96   | 8538382.40 |
| A15  | 4072  | 2 3/8" BC          | 740399.34   | 8541050.57 |
| A17  | 2087  | 2 3/8" BC          | 740481.90   | 8543718.85 |
| A21  | 4062  | 2 3/8" BC          | 740602.96   | 8549007.55 |
| A25  | 6     | 2 3/8" BC          | 740663.43   | 8554266.13 |
| C1   | 2016  | 5/8" I. REBAR      | 737187.20   | 8521962.11 |
| C13  | 2005  | 1 1/2" I. PIPE     | 737652.69   | 8538402.84 |
| E1   | 2017  | 5/8" I. REBAR      | 734525.41   | 8522003.04 |
| E9   | 4012  | 3" BM BC           | 734766.58   | 8533080.68 |
| J1   | 150   | 2 3/8" BC          | 729260.66   | 8522072.05 |
| J9   | 173   | 2 3/8" BC          | 729492.60   | 8533228.74 |
| J17  | 4007  | 2 3/8" BC          | 729875.47   | 8543918.75 |
| J25  | 2055  | 2 3/8" BC          | 730092.73   | 8554424.30 |
| L1   | 1004  | 2" I. PIPE         | 726613.55   | 8522109.58 |
| N1   | 1003  | 2 1/2" BC          | 723966.16   | 8522146.92 |
| R1   | 3000  | 2 1/2" BC          | 718671.76   | 8522221.92 |
| R9   | 4031  | 2 3/8" BC          | 718940.83   | 8533315.33 |
| R17  | 4002  | 2 3/8" BC          | 719284.98   | 8544057.33 |
| R25  | 2051  | 2 3/8" BC          | 719522.04   | 8554582.48 |
| Z1   | 4     | 2 3/8" BC          | 708055.23   | 8522447.34 |
| Z9   | 2071  | 2 3/8" BC          | 708380.03   | 8533512.61 |
| Z13  | 4048  | 2 3/8" BC          | 708537.39   | 8538813.45 |
| Z17  | 4046  | 2 3/8" BC          | 708676.98   | 8544085.68 |
| Z23  | 5001  | 2 3/8" BC          | 708886.42   | 8551994.06 |
| Z25  | 5     | 2 3/8" BC          | 708950.43   | 8554636.39 |
| ⊙    | 3002  | 5/8" ROTATE PT     | 721990.70   | 8538056.60 |

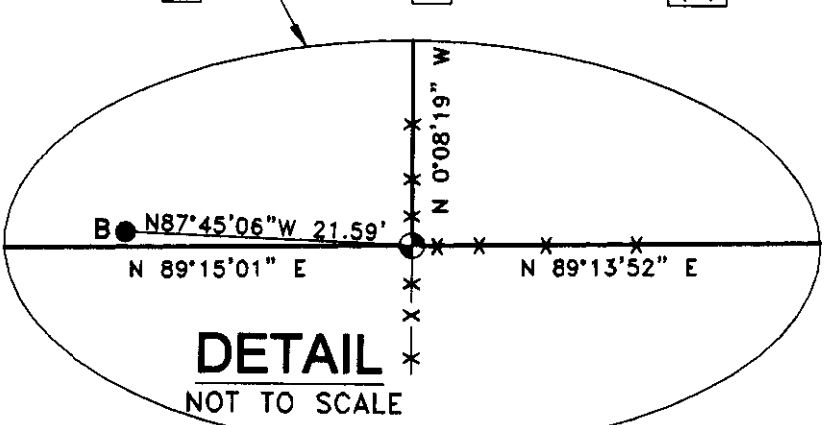
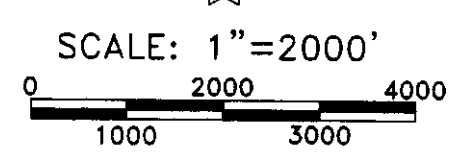
REGISTERED PROFESSIONAL LAND SURVEYOR  
*G. Dennis Edwards*  
 OREGON  
 JULY 16, 1971  
 G. DENNIS EDWARDS  
 9 5 1  
 RENEWS 12/31/2011

**REFERENCE:**

- A FOUND 2 3/8" B.C.; S. HADDOCK UMATILLA CO. 2004 REMONUMENTATION SURVEY
- B FOUND 2 3/8" B.C. B. PRIMM; UMATILLA CO. 2007 REMONUMENTATION SURVEY
- C FOUND 2 1/2" B.C. T. HAMBY 1980 SURVEY FOR U. E. C. A.
- D FOUND 2 1/2" B.C. D. STAEBLER; 1974 SURVEY FOR SNOW
- E FOUND 5/8" I. REBAR; HARRIS 1964 SURVEY FOR CUNHA-CORREA; SET B.C. ● NE COR. SEC. 6
- F FOUND 3" I. PIPE WITH A 6"x9" I. PLATE; HARRIS 1962 SURVEY FOR PENDLETON & CUNHA RANCHES
- F-1 FOUND 1 1/4" I. PIPE; HARRIS 1962 SURVEY FOR PENDLETON & CUNHA RANCHES

**LEGEND:**

- SET 2 3/8" B. C. ON 1"x30" I. PIPE
- SET 5/8"x30" I. REBAR WITH PLASTIC CAP #951
- FENCE CORNER
- ⊙ CONTROL POINT #3002, 5/8" X 30" IRON REBAR
- MONUMENTS FOUND AS NOTED
- [0000] OF RECORD, ORIGINAL G.L.O. SURVEY
- (000) OF RECORD, FROM SURVEYS NOTED



SURVEY FOR UMATILLA COUNTY  
 IN T 2 N, R 29 E, W.M.,  
 UMATILLA COUNTY, OREGON  
 8/04/10 JOB# S0610175  
 EDWARDS SURVEYING P.O. BOX 763  
 541-567-3336 HERMISTON, OREGON 97138  
 DRAWN BY JMC

Date 8-11  
 Red By KA  
 No. H-650