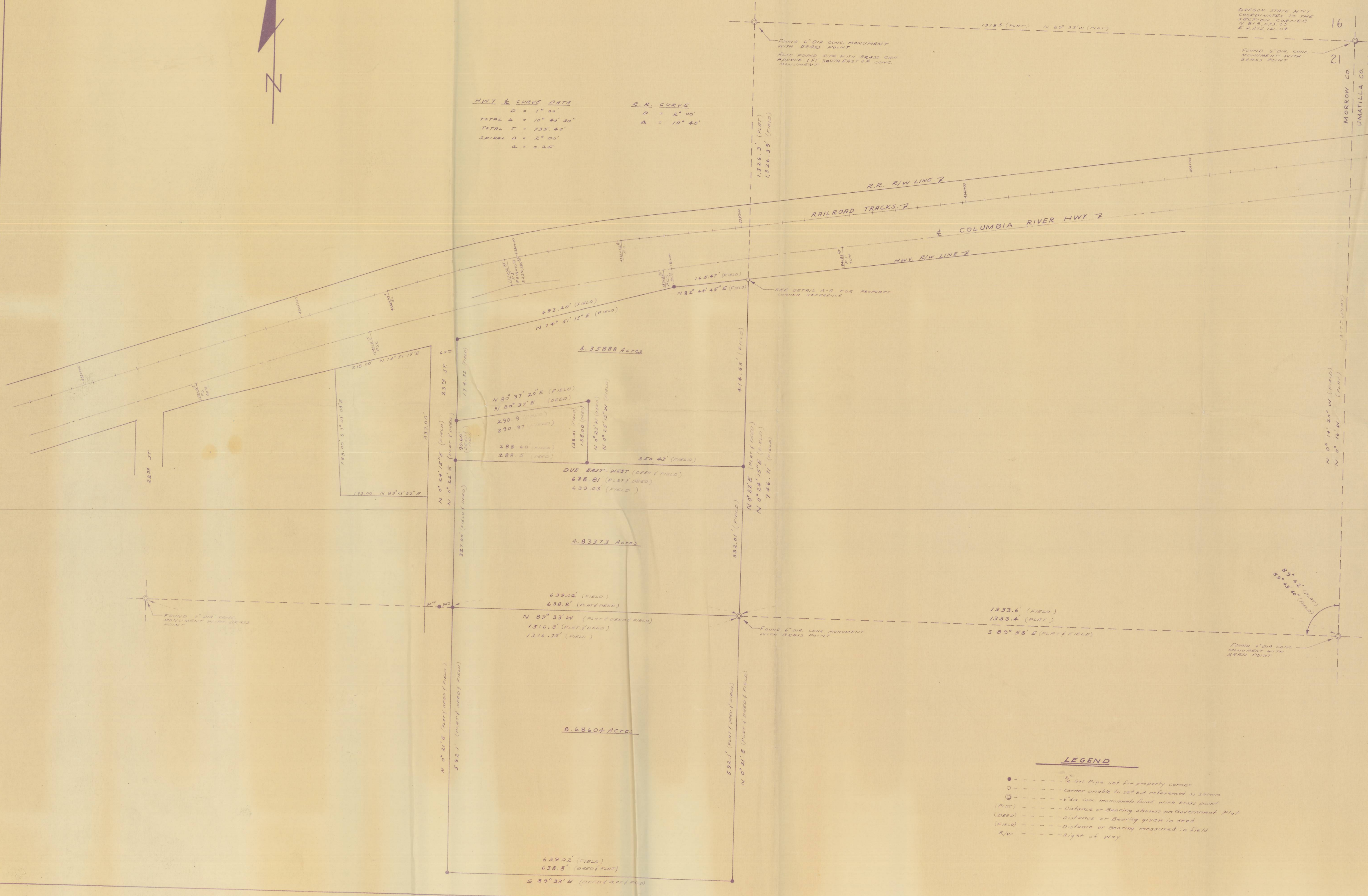


OREGON STATE HWY COORDINATES TO THE DISTRICT CORNER  
N 81° 03' 03" W  
E 127.121.09

FOUND 6" DIA CONE MONUMENT WITH BEARS POINT

**HWY & CURVE DATA**  
D = 1° 00'  
TOTAL Δ = 10° 46' 30"  
TOTAL T = 735' 40"  
SPIRAL Δ = 2° 00"  
a = 0.25

**R.R. CURVE**  
D = 2° 00'  
Δ = 10° 40'



4.35888 Acres

4.83373 Acres

8.68604 Acres

**LEGEND**

- --- 1/4" dia. Pipe set for property corner
- --- corner unable to set out referenced as shown
- ⊙ --- 6" dia. cone monument found with bears point
- Distance or Bearing shown on Government Plat
- (DEED) --- distance or bearing given in deed
- (FIELD) --- distance or bearing measured in field
- R/W --- Right of way

PROJECT: BATIE P RAND SURVEY  
A PROPERTY SURVEY FOR  
BATIE P RAND IN THE W 1/4,  
NE 1/4, SEC 21, T 5N, R 21E, W.M.

DR. BY: D.L.S. DATE: Aug 19, 1945 SCALE: 1" = 100'  
CK. BY: REV: SHEET: 1 OF 1

STANLEY G. WALLULIS  
Consulting Engineer  
P. O. Box 91  
213 S. W. Emigrant  
Pendleton Oregon