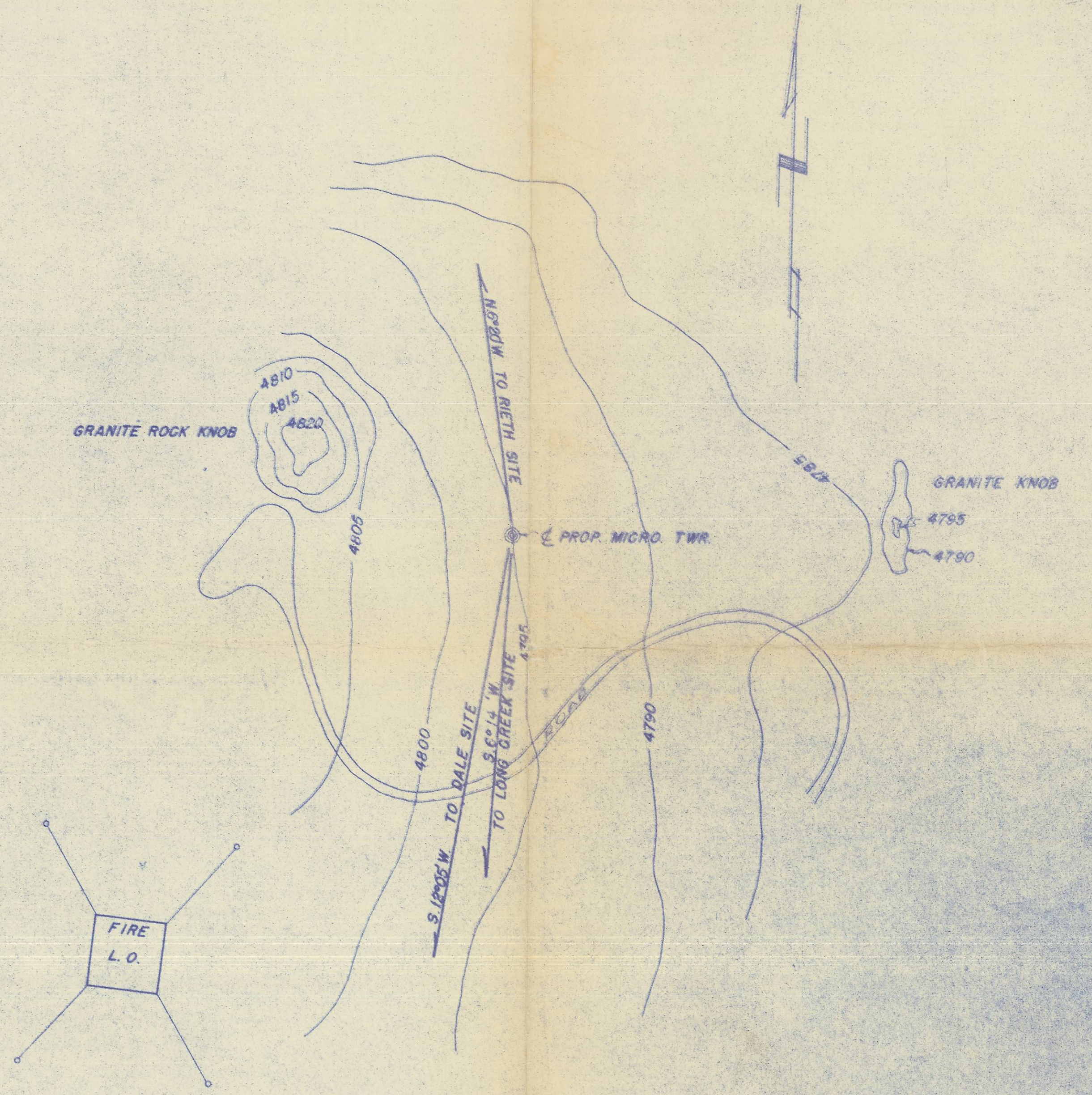


NW 1/4 - SEC. 28, T.3S., R.31E. W.M.

SURVEY  
1" = 200'



TOPOGRAPHY  
1" = 30'



NO.	DATE	DESCRIPTION	BY
		JOHN R. GRAY REG. PROF. ENGR. 3352 359 N.E. 130 PLACE AL-4-7550 SURVEY & TOPOGRAPHY	
		CARNEY BUTTE SITE UMATILLA COUNTY, OREGON	
DRAWN	July 1, 1956		
CHECKED		JOB 56-5	SHEET 1 OF 1

06-635-C