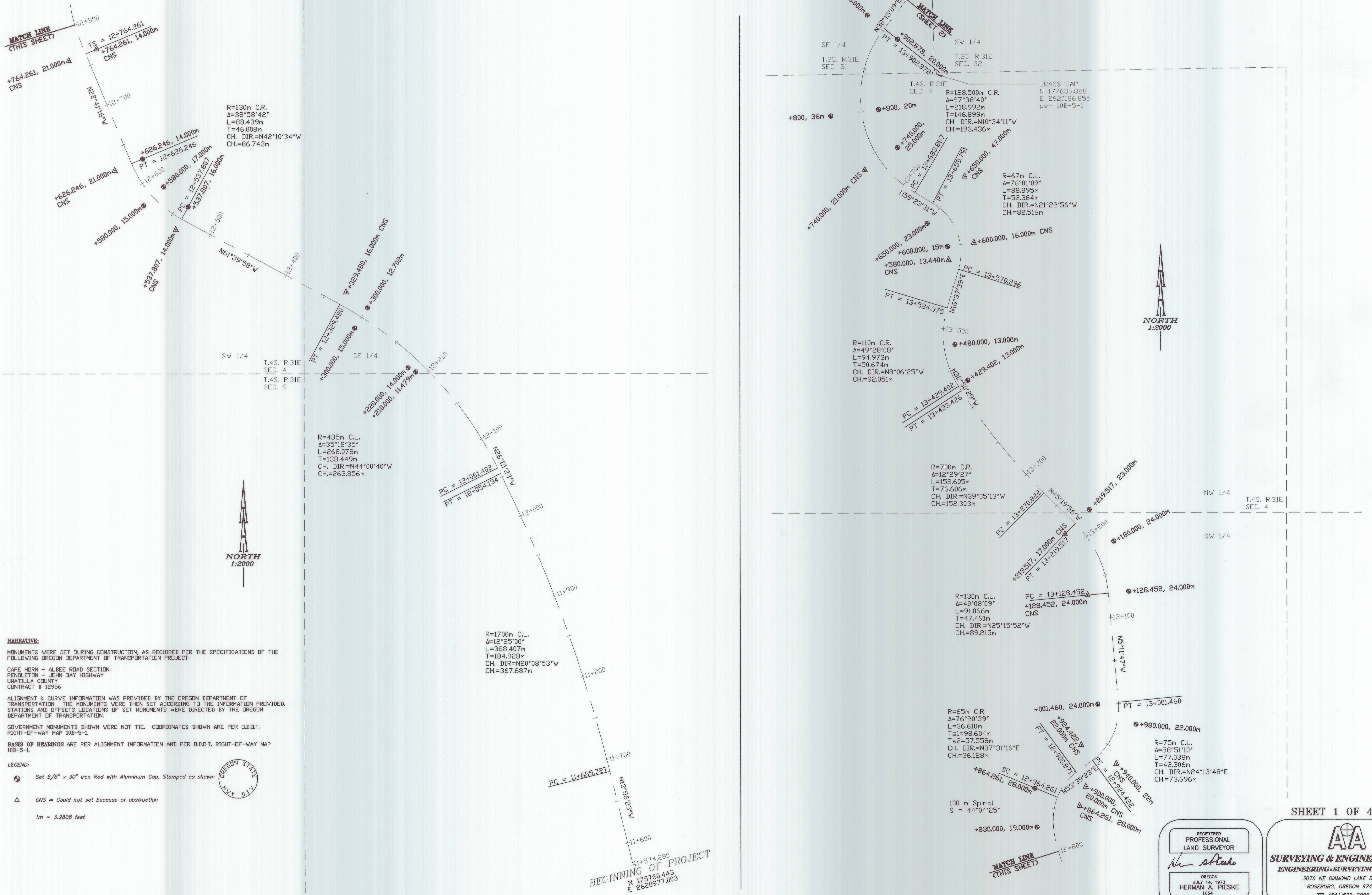


Right-of-Way Monumentation

Oregon Department Of Transportation
DECEMBER 2005



NARRATIVE:
MONUMENTS WERE SET DURING CONSTRUCTION, AS REQUIRED PER THE SPECIFICATIONS OF THE FOLLOWING OREGON DEPARTMENT OF TRANSPORTATION PROJECT:
CAPE HORN - ALBEE ROAD SECTION
PENDLETON - JOHN DAY HIGHWAY
UMATILLA COUNTY
CONTRACT # 12956
ALIGNMENT & CURVE INFORMATION WAS PROVIDED BY THE OREGON DEPARTMENT OF TRANSPORTATION. THE MONUMENTS WERE THEN SET ACCORDING TO THE INFORMATION PROVIDED. STATIONS AND OFFSETS LOCATIONS OF SET MONUMENTS WERE DIRECTED BY THE OREGON DEPARTMENT OF TRANSPORTATION.
GOVERNMENT MONUMENTS SHOWN WERE NOT TIE. COORDINATES SHOWN ARE PER O.D.O.T. RIGHT-OF-WAY MAP 10B-5-1.
BASIS OF BEARINGS ARE PER ALIGNMENT INFORMATION AND PER O.D.O.T. RIGHT-OF-WAY MAP 10B-5-1.
LEGEND:
● Set 5/8" x 30" Iron Rod with Aluminum Cap, Stamped as shown:
△ CNS = Could not set because of obstruction
1m = 3.2808 feet



BEGINNING OF PROJECT
N 175760.443
E 2620977.003

REGISTERED PROFESSIONAL LAND SURVEYOR
Herman A. Pieske
OREGON JULY 14, 1978
HERMAN A. PIESKE
1654
EXP. DATE: 12-31-06

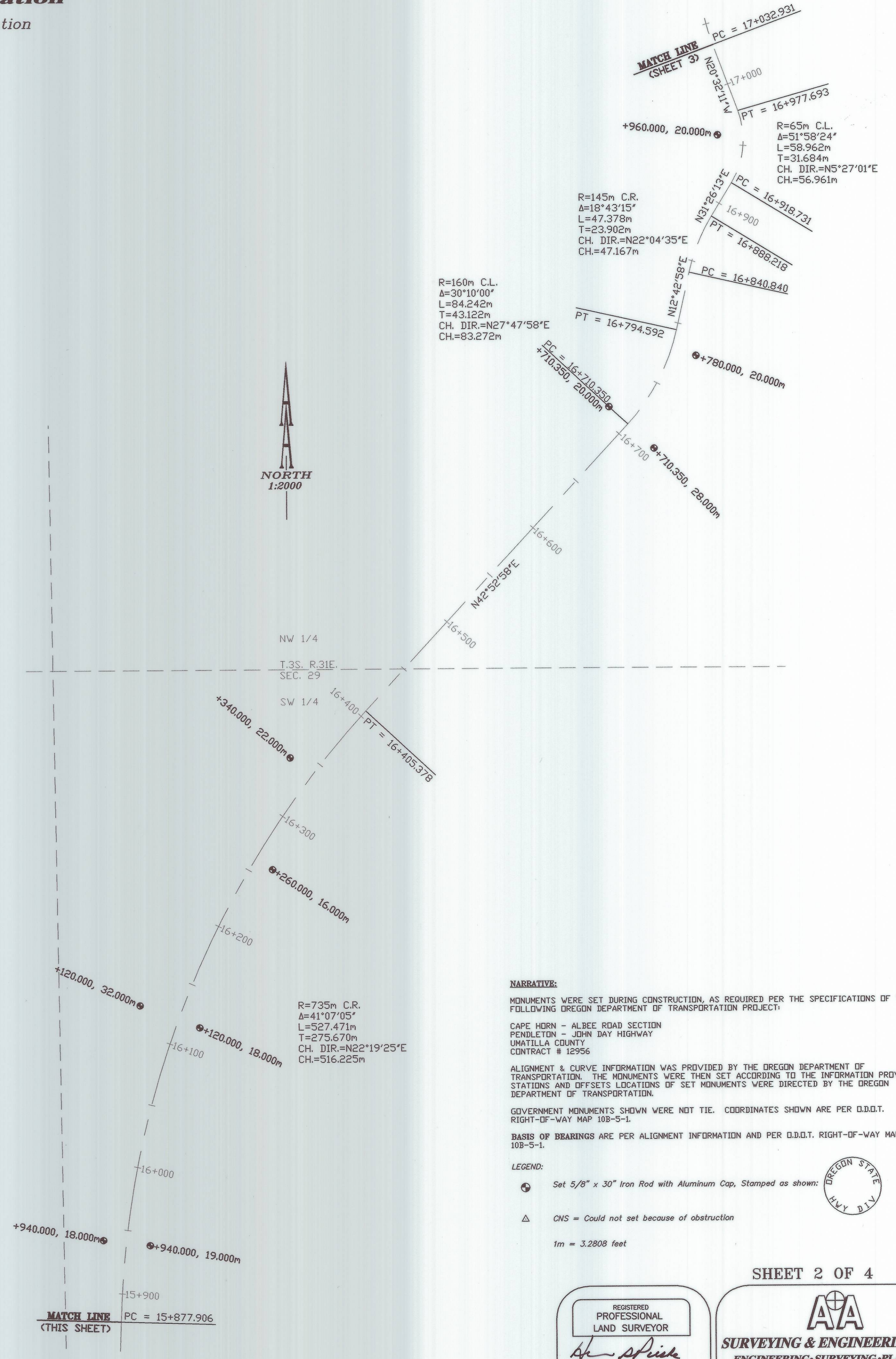
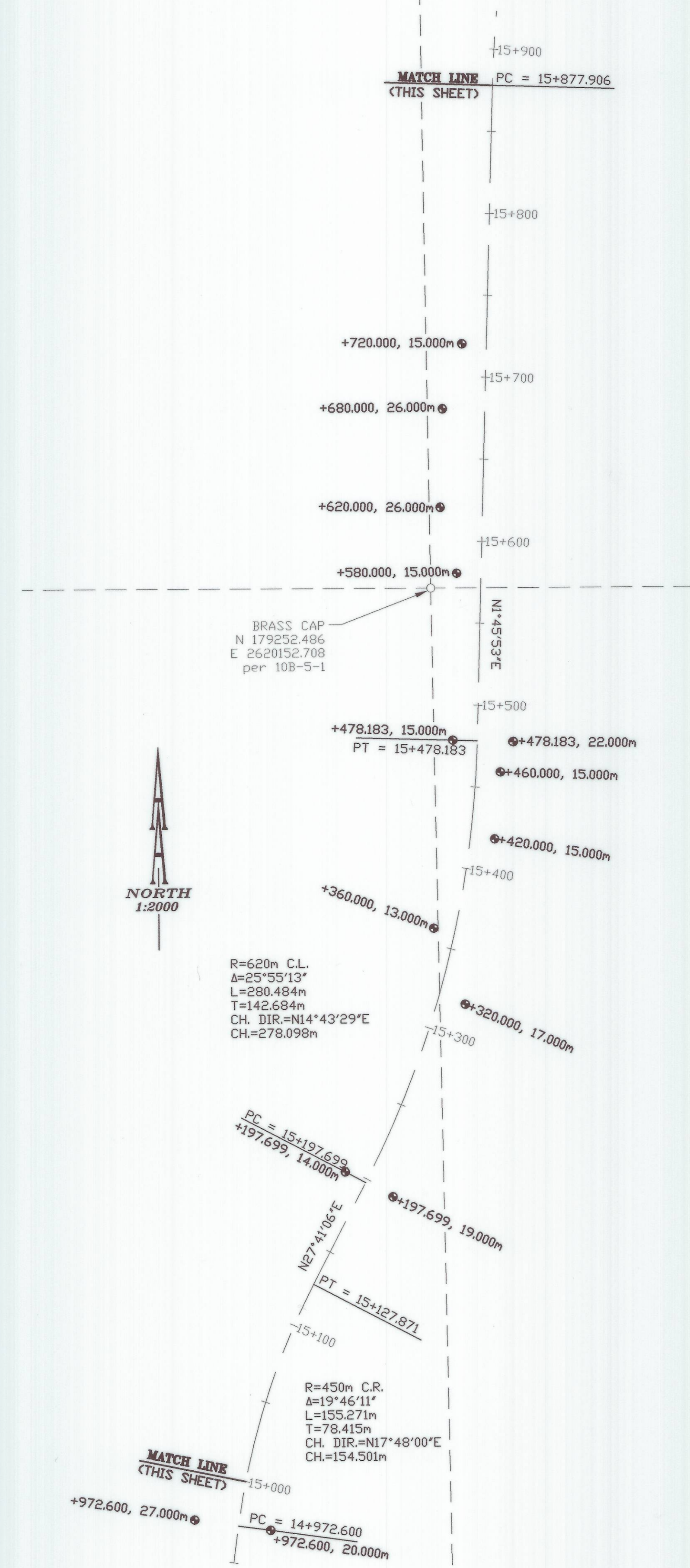
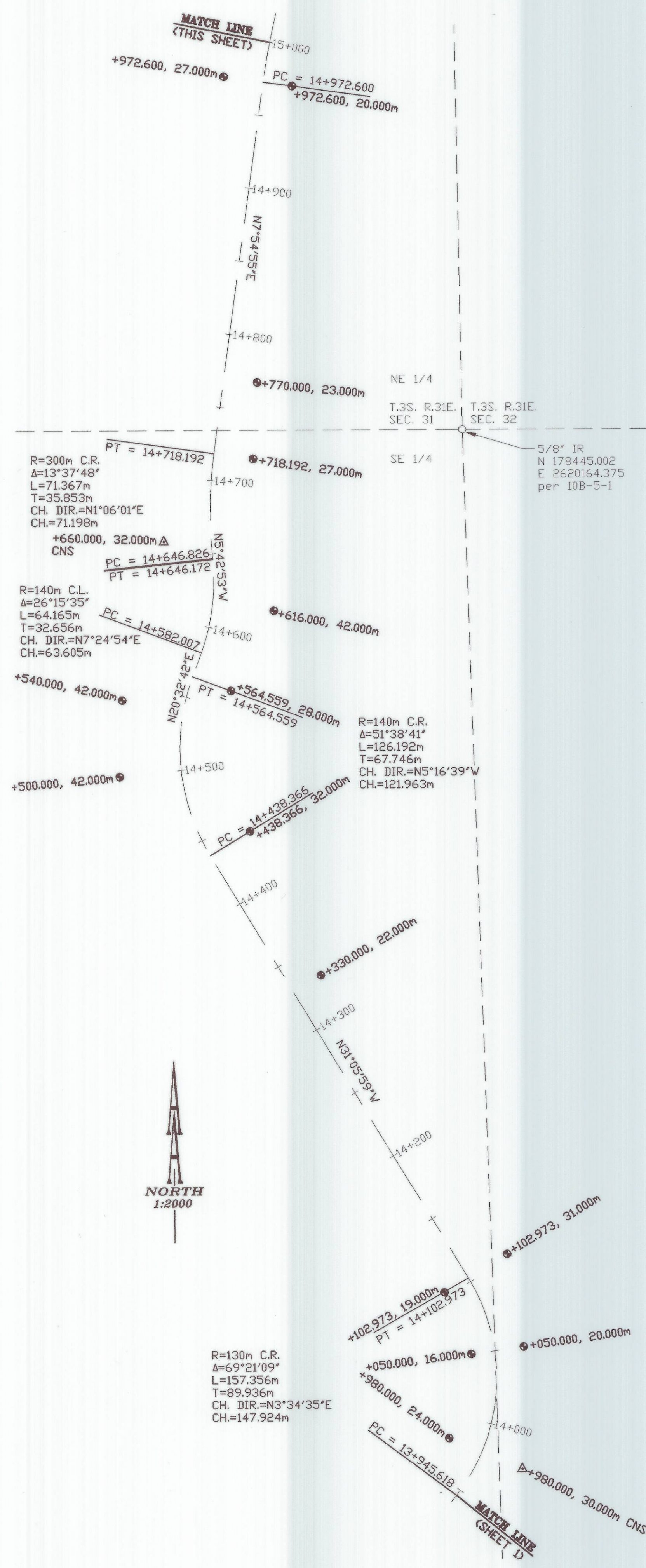
SHEET 1 OF 4
AA
SURVEYING & ENGINEERING, INC.
ENGINEERING • SURVEYING • PLANNING
3076 NE DIAMOND LAKE BLVD.
ROSEBURG, OREGON 97470
TEL (541)672-2096
FAX (541)672-0611

RECEIVED BY
Umatilla County Surveyor
Date 2-06
Rec'd By KK
No. 06-30-C

T45 R 31

Right-of-Way Monumentation

Oregon Department Of Transportation
DECEMBER 2005



NARRATIVE:
MONUMENTS WERE SET DURING CONSTRUCTION, AS REQUIRED PER THE SPECIFICATIONS OF THE FOLLOWING OREGON DEPARTMENT OF TRANSPORTATION PROJECT:
CAPE HORN - ALBEE ROAD SECTION
PENDLETON - JOHN DAY HIGHWAY
UMATILLA COUNTY
CONTRACT # 12956
ALIGNMENT & CURVE INFORMATION WAS PROVIDED BY THE OREGON DEPARTMENT OF TRANSPORTATION. THE MONUMENTS WERE THEN SET ACCORDING TO THE INFORMATION PROVIDED. STATIONS AND OFFSETS LOCATIONS OF SET MONUMENTS WERE DIRECTED BY THE OREGON DEPARTMENT OF TRANSPORTATION.
GOVERNMENT MONUMENTS SHOWN WERE NOT TIE. COORDINATES SHOWN ARE PER O.D.O.T. RIGHT-OF-WAY MAP 108-5-1.
BASIS OF BEARINGS ARE PER ALIGNMENT INFORMATION AND PER O.D.O.T. RIGHT-OF-WAY MAP 108-5-1.
LEGEND:
● Set 5/8" x 30" Iron Rod with Aluminum Cap, Stamped as shown:
△ CNS = Could not set because of obstruction
1m = 3.2808 feet

SHEET 2 OF 4

REGISTERED
PROFESSIONAL
LAND SURVEYOR

Herman A. Pieske

OREGON
JULY 14, 1978
HERMAN A. PIESKE
1984
EXP. DATE: 12-31-06

AA

SURVEYING & ENGINEERING, INC.
ENGINEERING • SURVEYING • PLANNING

3076 NE DIAMOND LAKE BLVD.
ROSEBURG, OREGON 97470
TEL (541)672-2086
FAX (541)672-0611

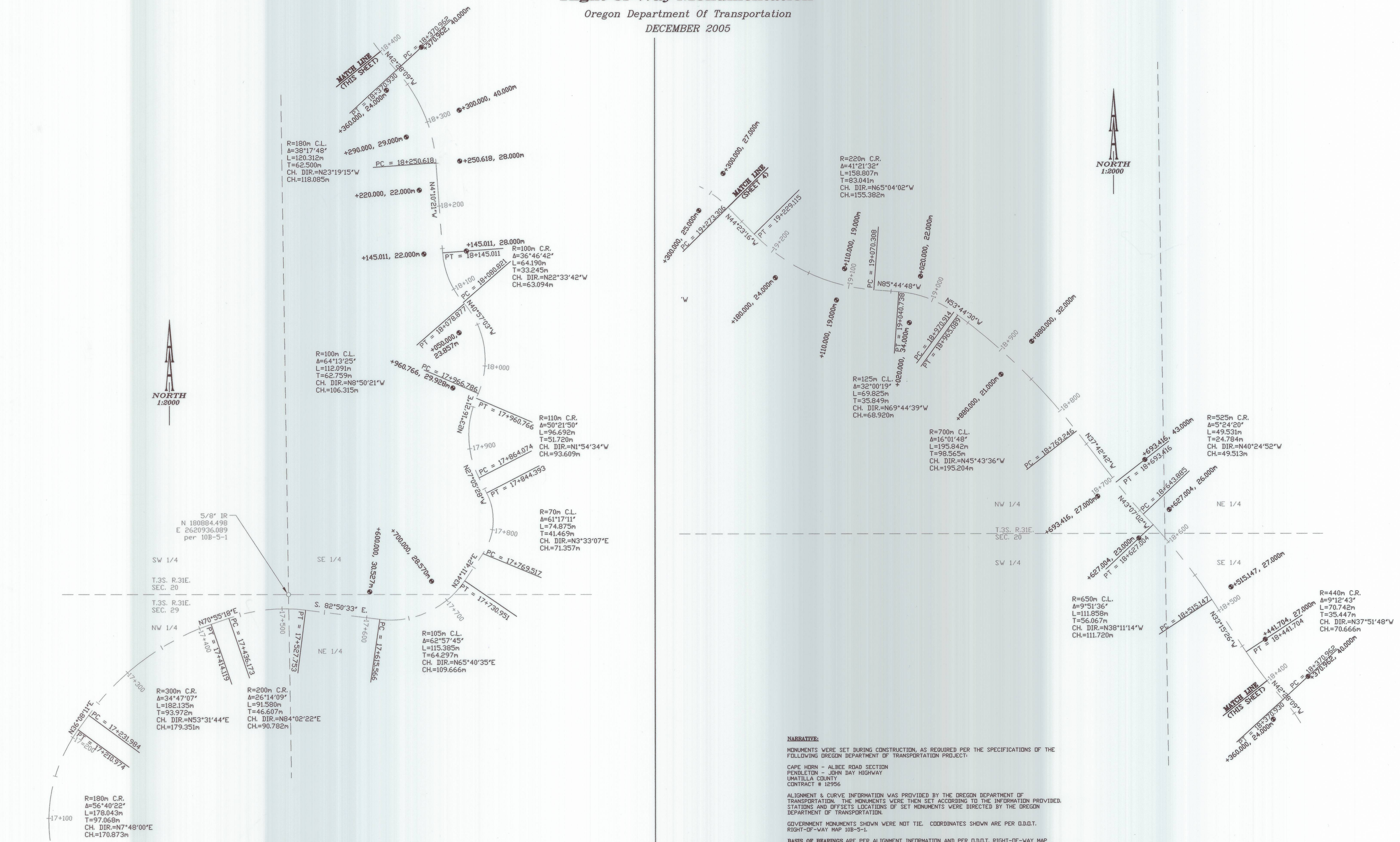
RECEIVED BY
Umatilla County Surveyor
Date: 2-06
Rec'd By: *kk*
No. 06-30-C

T3S R31

Right-of-Way Monumentation

Oregon Department Of Transportation

DECEMBER 2005



NARRATIVE:

MONUMENTS WERE SET DURING CONSTRUCTION, AS REQUIRED PER THE SPECIFICATIONS OF THE FOLLOWING OREGON DEPARTMENT OF TRANSPORTATION PROJECT:

CAPE HORN - ALBEE ROAD SECTION
 PENDLETON - JOHN DAY HIGHWAY
 UMATILLA COUNTY
 CONTRACT # 12956

ALIGNMENT & CURVE INFORMATION WAS PROVIDED BY THE OREGON DEPARTMENT OF TRANSPORTATION. THE MONUMENTS WERE THEN SET ACCORDING TO THE INFORMATION PROVIDED. STATIONS AND OFFSETS LOCATIONS OF SET MONUMENTS WERE DIRECTED BY THE OREGON DEPARTMENT OF TRANSPORTATION.

GOVERNMENT MONUMENTS SHOWN WERE NOT TIE. COORDINATES SHOWN ARE PER D.D.T. RIGHT-OF-WAY MAP 10B-5-1.

BASIS OF BEARINGS ARE PER ALIGNMENT INFORMATION AND PER D.D.T. RIGHT-OF-WAY MAP 10B-5-1.

LEGEND:

● Set 5/8" x 30" Iron Rod with Aluminum Cap, Stamped as shown:

△ CNS = Could not set because of obstruction

1m = 3.2808 feet



SHEET 3 OF 4

REGISTERED
 PROFESSIONAL
 LAND SURVEYOR

 OREGON
 JULY 14, 1978
 HERMAN A. PIESKE
 1654
 EXP. DATE: 12-31-06

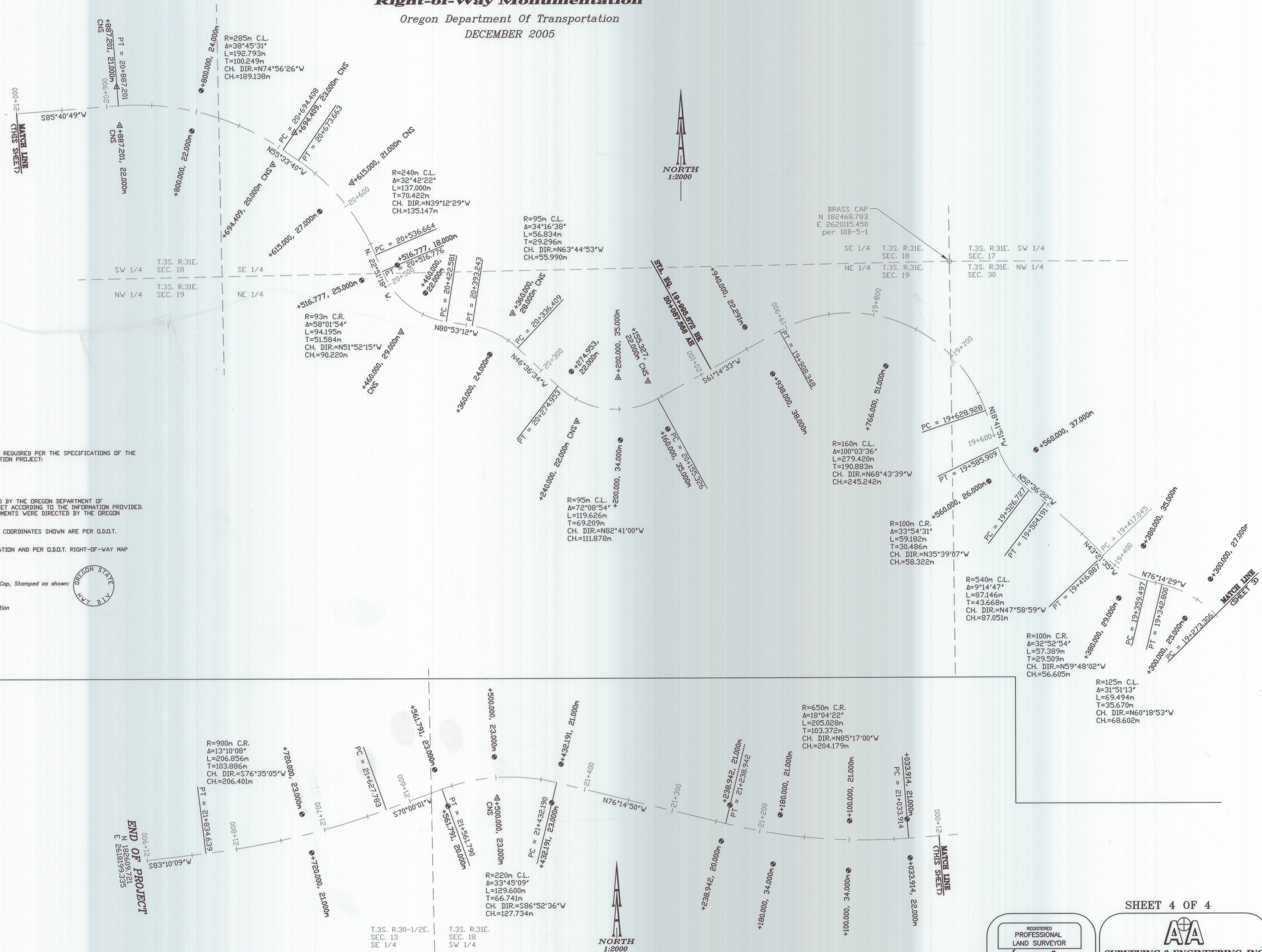
AA
SURVEYING & ENGINEERING, INC.
 ENGINEERING • SURVEYING • PLANNING
 3076 NE DIAMOND LAKE BLVD.
 ROSEBURG, OREGON 97470
 TEL (541)672-2096
 FAX (541)672-0611

RECEIVED BY
 Umatilla County Surveyor
 Date 2-06
 Rec'd by KK
 No. 06-30-C

T35 R 51

Right-of-Way Monumentation

Oregon Department Of Transportation
DECEMBER 2005



NARRATIVE:

MONUMENTS WERE SET DURING CONSTRUCTION, AS REQUIRED PER THE SPECIFICATIONS OF THE FOLLOWING OREGON DEPARTMENT OF TRANSPORTATION PROJECT:

CAPE HORN - ALBEE ROAD SECTION
PENDLETON - JOHN DAY HIGHWAY
UMATILLA COUNTY
CONTRACT # 12956

ALIGNMENT & CURVE INFORMATION WAS PROVIDED BY THE OREGON DEPARTMENT OF TRANSPORTATION. THE MONUMENTS WERE THEN SET ACCORDING TO THE INFORMATION PROVIDED. STATIONS AND OFFSETS LOCATIONS OF SET MONUMENTS WERE DIRECTED BY THE OREGON DEPARTMENT OF TRANSPORTATION.

GOVERNMENT MONUMENTS SHOWN WERE NOT TIE. COORDINATES SHOWN ARE PER O.D.O.T. RIGHT-OF-WAY MAP 10B-5-1.

BASIS OF BEARINGS ARE PER ALIGNMENT INFORMATION AND PER O.D.O.T. RIGHT-OF-WAY MAP 10B-5-1.

LEGEND:

● Set 5/8" x 30" Iron Rod with Aluminum Cap, Stamped as shown:



△ CNS = Could not set because of obstruction

1m = 3.2808 feet

END OF PROJECT
N 182609.721
E 283939.335

SHEET 4 OF 4

REGISTERED PROFESSIONAL LAND SURVEYOR
Herman A. Pieske
OREGON
JULY 14, 1978
HERMAN A. PIESKE
1654
EXP. DATE: 12-31-06

AA
SURVEYING & ENGINEERING, INC.
ENGINEERING • SURVEYING • PLANNING
3076 NE DIAMOND LAKE BLVD.
ROSEBURG, OREGON 97470
TEL (541) 672-2096
FAX (541) 672-0611

RECEIVED BY
Umatilla County Surveyor
Date: 2-06
Rec'd by: KK
No. 06-30-C

TSS R51