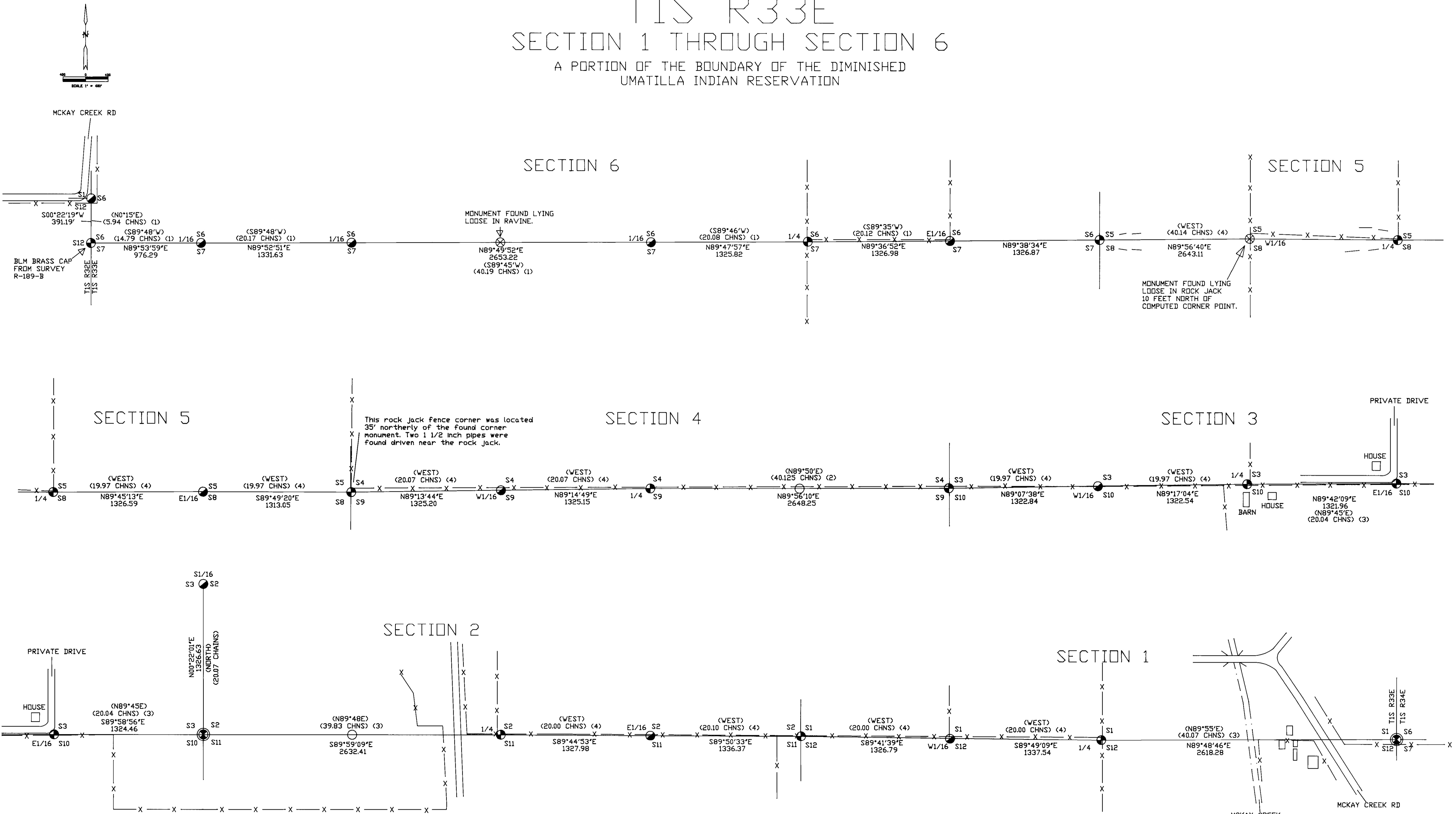


# T1S R33E

## SECTION 1 THROUGH SECTION 6

A PORTION OF THE BOUNDARY OF THE DIMINISHED  
UMATILLA INDIAN RESERVATION



**BASIS OF BEARINGS:**  
Bearings are based on local grid coordinates rotated to true around the corner to sections 1, 12, and 6. Bearings were rotated 1°17'14\"/>

**NOTE:**  
This survey was performed with a Wild System 200 GPS and a Geodimeter System 600 Electronic Total Station.

**SURVEY DATE:** JUNE 1996  
David L. Haddock, Surveyor and Engineer  
P.O. Box 1574 (541) 276-2174  
Pendleton, OR. 97801

**SURVEY FOR:**  
WORLDCOM NETWORK SERVICES INC.  
P.O. BOX 21348  
TULSA, OK 74121

### LEGEND

- SET 2 1/2" BRASS CAP ON 30' GALVANIZED IRON PIPE
- FOUND GLO BRASS CAP WILKES / DAILEY 1917
- FOUND INDIAN ALLOTMENT BRASS CAP REDFIELD 1917
- ⊗ FOUND INDIAN ALLOTMENT BRASS CAP LOOSE AS NOTED
- MONUMENT NOT FOUND

- REFERENCE SURVEYS**
- (1) R-189-B US BLM 1976
  - (2) L.E. WILKES GLO GROUP 29 DATED MAY, 1917
  - (3) THOMAS DAILEY GLO SPECIAL INSTRUCTIONS DATED MAY 24, 1919
  - (4) C.E. REDFIELD BIA DATED MARCH, 1919

### NARRATIVE OF SURVEY:

This survey was performed at the request of WORLDCOM NETWORK SERVICES INC. The purpose of the survey was to identify a portion of the Umatilla Indian Reservation Boundary preparatory to laying a fibre optic communications line.

The reference surveys used are listed in the legend on this plat. All monuments established by the reference surveys have been in location for sufficient duration to accurately represent the Reservation Boundary. Lines were established from monument to monument.

This line was originally established as the Diminished Reservation Boundary by L.E. Wilkes in 1917. The 1/16 corners were set by C.E. Redfield in 1919. The part of the line from the 1/4 corner between sections 3 and 10 to the 1/4 corner between sections 2 and 11 was redone by Mr. Thomas Dailey in 1919 with Mr. Redfield as chairman.

The section corner to sections 2, 3, 10, and 11 was missing and was replaced using the modified method of single proportion for a boundary previously proved irregular by retracement as outlined in section 5-36 of the 1973 BLM manual. The corner to sections 1, 12, 6, and 7 was missing and was replaced from the witness stump for that corner.

I, David L. Haddock, do hereby certify that I have correctly surveyed the section lines as represented hereon in accordance with DRS Chapter 92 and the BLM Manual of Instructions of 1973.

REGISTERED PROFESSIONAL LAND SURVEYOR

DAVID L. HADDOCK  
JULY 12, 1968  
DAVID L. HADDOCK  
852  
RENEWS 6-30-97

**RECEIVED BY**  
Umatilla County Surveyor  
Date 6-96  
Rec'd by AS  
No. 96-12-C