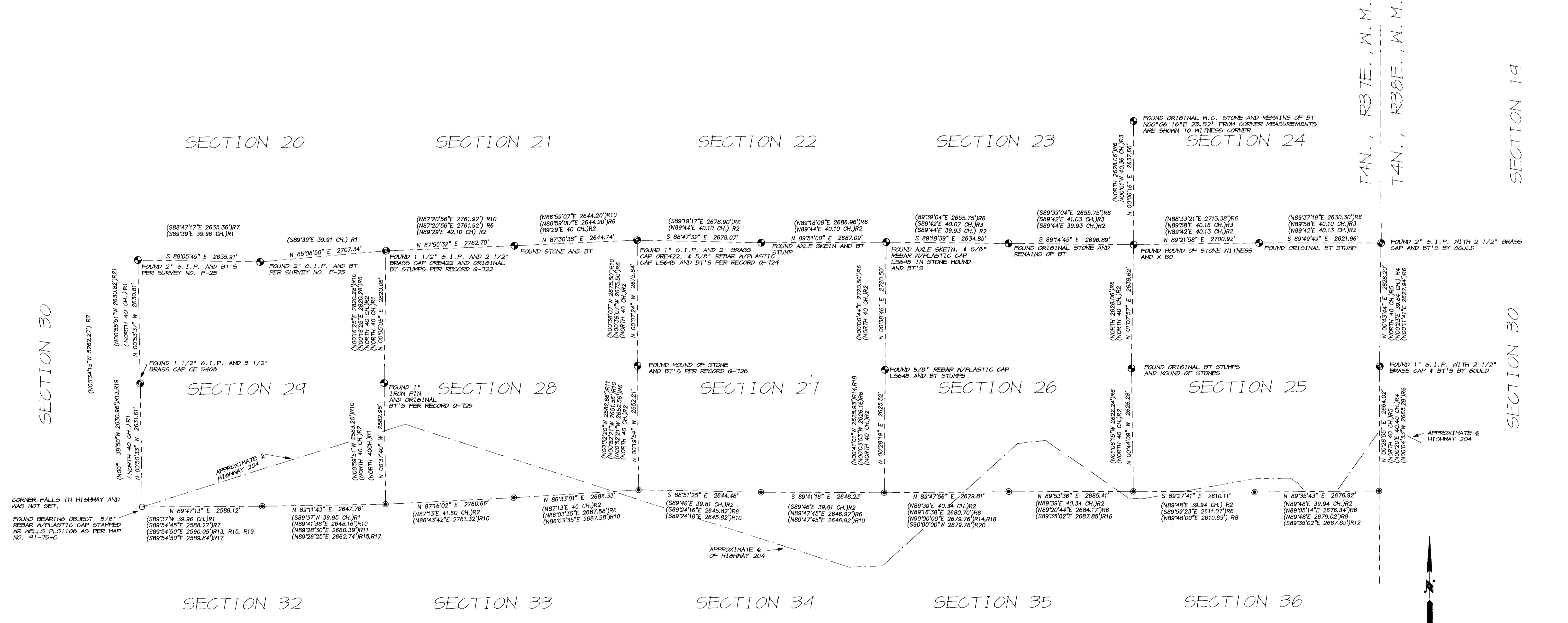


RECORD OF SURVEY

SECTIONS 25 THROUGH 29 AND THE EAST 1/4 CORNER OF SECTION 23
T4N., R37E., W.M., UMATILLA COUNTY, OREGON.



LEGEND

- | | |
|---|--|
| <ul style="list-style-type: none"> ● FOUND EVIDENCE AS NOTED AND REMONUMENTED WITH A 2 1/2" BRASS CAP ON A 1 1/2" 6-I.P. SEE CORNER RECORD FILED SEPARATELY. ⊙ FOUND MONUMENTS AS NOTED, MAINTAINED CORNER. SEE CORNER RECORD FILED SEPARATELY. ⊙ FOUND MONUMENT OF RECORD MAP NO. 91-75-C UMATILLA CO. RECORDS ○ FOUND CORNER EVIDENCE AS NOTED (XOX) R1 RECORD FROM SURVEY BY WILLIAM ODELL, UNDER CONTRACT NO. 114, DATED JULY 2, 1866. (XOX) R2 RECORD FROM SURVEY BY GEORGE S. PERSHIN, UNDER CONTRACT NO. 352, DATED JULY 24, 1879. (XOX) R3 RECORD FROM SURVEY BY CHARLES L. & WILLIAM C. CAMPBELL, UNDER CONTRACT NO. 733, DATED MARCH 22, 1901. (XOX) R4 RECORD FROM SURVEY BY OTIS O. GOULD UNDER SPECIAL INSTRUCTIONS, GROUP 234, DATED JULY 11, 1939. (XOX) R5 RECORD FROM SURVEY BY GEORGE S. PERSHIN, UNDER CONTRACT NO. 304, DATED SEPTEMBER 19, 1874. (XOX) R6 RECORD FROM SURVEY NO. N-65 (HAMBLETON) (XOX) R7 RECORD FROM SURVEY NO. F-25 (STAEBLER) | <ul style="list-style-type: none"> (XOX) R8 RECORD FROM SURVEY NO. 83-1-A (MCLIND) (XOX) R9 RECORD FROM SURVEY NO. G-741-C (STORMS) (XOX) R10 RECORD FROM SURVEY NO. P-113-B (FERGUSON) (XOX) R11 RECORD FROM SURVEY NO. M-114-B (KRUMBEIN) (XOX) R12 RECORD FROM SURVEY NO. R-144-B (KRUMBEIN) (XOX) R13 RECORD FROM SURVEY NO. M-2-13 (KRUMBEIN) (XOX) R14 RECORD FROM SURVEY NO. 84-30-B (KRUMBEIN) (XOX) R15 RECORD FROM SURVEY NO. 5-104-B (KRUMBEIN) (XOX) R16 RECORD FROM SURVEY NO. 5-50-B (KRUMBEIN) (XOX) R17 RECORD FROM SURVEY NO. 5-154 (KRUMBEIN) (XOX) R18 RECORD FROM SURVEY NO. 84-30-B (KRUMBEIN) (XOX) R19 RECORD FROM SURVEY NO. N-73-13 (KRUMBEIN) (XOX) R20 RECORD FROM SURVEY NO. 83-207-B (WELLS) (XOX) R21 RECORD FROM SURVEY NO. 42-74-B (WELLS) |
|---|--|

NARRATIVE OF SURVEY

THE PURPOSE OF THIS SURVEY WAS TO RECOVER, RE-ESTABLISH, REMONUMENT OR MAINTAIN CERTAIN SECTION AND 1/4 SECTION CORNERS IN SECTIONS 25 THROUGH 29 OF TOWNSHIP 4 NORTH, RANGE 37 EAST, N.M. THE SURVEY WAS AUTHORIZED BY THE UMATILLA COUNTY BOARD OF COMMISSIONERS AND WAS FUNDED BY THE PUBLIC LAND CORNER MONUMENTATION FUND.

THE INFORMATION RECORDED IN THE COUNTY SURVEYORS OFFICE FOR THIS PROJECT INCLUDE, THIS RECORD OF SURVEY AND LAND CORNER RECORDS FOR CORNERS REMONUMENTED OR MAINTAINED TO CURRENT STANDARDS.

CONTROL SURVEYS WERE MADE WITH A SOKKIA TOTAL STATION WITH STANDARD ERRORS OF ±5 SECONDS OF ANGLE, AND 5MM±3 PARTS PER MILLION THIS DISTANCE FOR LINEAR MEASUREMENT.

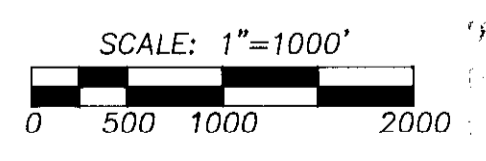
HISTORY OF SURVEYS:
SUBDIVISION OF THIS TOWNSHIP BEGAN IN 1865 WHEN WILLIAM H. ODELL SURVEYED SECTIONS 10, 19, 20, 29, 30, 31, AND 32 UNDER CONTRACT NO. 114. IN 1879 GEORGE S. PERSHIN SUBDIVIDED THE REMAINDER OF THE TOWNSHIP WITH THE EXCEPTION OF SECTIONS 10, 11, 12, 13, 14, 15, 23 AND 24, UNDER CONTRACT NO. 322. CHARLES L. AND WILLIAM C. CAMPBELL FINISHED THE SUBDIVISION IN 1901 UNDER CONTRACT NO. 733.

OTIS O. GOULD RESURVEYED THE EAST BOUNDARIES OF SECTION 24 AND 25 IN 1939 UNDER SPECIAL INSTRUCTIONS, GROUP 234. SINCE 1939, SEVERAL RECORDED SURVEYS HAVE BEEN MADE AFFECTING PUBLIC LAND CORNERS AND APPLICABLE SURVEY RECORDS ARE NOTED ON THIS MAP.

LAND CORNER RECORDS:
THE LAND CORNER RECORD FORMS, FILED SEPARATELY, CONTAIN EXPLANATIONS, HISTORIES AND METHODS OF RE-ESTABLISHMENT, REMONUMENTATION AND MAINTENANCE FOR CORNERS VISITED ON THIS SURVEY. THE LAND CORNER RECORDS SHOULD BE CONSULTED FOR SPECIFIC INFORMATION ON EACH CORNER.

BASIS OF BEARING

SOLAR OBSERVATION USING THE HOUR ANGLE METHOD. TAKEN NEAR THE N. 1/4 CORNER OF SECTION 27



REGISTERED PROFESSIONAL LAND SURVEYOR 	TOMKINS-WELLS JOINT VENTURE A PARTNERSHIP P.O. BOX 1696, 357 NE HWY 11 PENDLETON, OR 97801 PHONE: (503) 276-6362	PROJECT: PUBLIC LAND CORNER REMONUMENTATION FOR UMATILLA COUNTY SECTIONS 25 THROUGH 29 AND THE 1/4 CORNER COMMON TO SECTIONS 23 AND 24, T4N., R37E., N.M.
OREGON JULY 22, 1977 WILLIAM R. WELLS 1108 EXPIRES 12-31-94	DATE: 8/2/93 CK. BY: WRW	DR. BY: GEF NO:

M/0

340 0394

RECEIVED

NOV 18 1998



1998-3400394 1 of 2

UMATILLA COUNTY
RECORDS

STATE OF OREGON)
UMATILLA COUNTY) SS AFFIDAVIT OF CORRECTION (Record of Survey)

I, William R. Wells, being duly sworn, depose and say that I am the surveyor who recorded Umatilla County Survey No. 93-064-C, and

The following corrections to said record of survey are necessary and are as follows:

Change the bearing and distance from the East one-quarter Corner to the Northeast Corner of Section 29, T.4N., R.37E., W.M., from North 00°55'05" East., 2820.06 feet, to North 00°48'12" East., 2819.98 feet.

Change the bearing and distance from the Southeast Corner to the East one-quarter Corner of Section 29, T.4N., R.37E., W.M., from North 00°37'40" West., 2582.95 feet, to North 00°30'09" West., 2582.89 feet.

REGISTERED
PROFESSIONAL
LAND SURVEYOR

William R. Wells

OREGON
JULY 22, 1977
WILLIAM R. WELLS
1106

renews 6-30-00

NOTARY CERTIFICATE

William R. Wells

Registered Professional Land Surveyor #1106

Subscribed and sworn to before me this 16th day of November, 1998.

Dawn M. Tubbs
Notary Public for the State of Oregon

My Commission Expires 10-14-2000



STATE OF OREGON)
UMATILLA COUNTY) SS

I, David Krumbein, Umatilla County Surveyor, do hereby certify that said affidavit of correction for Umatilla County Survey No. 93-064-C, has been examined by me and that it complies with O.R.S. 92.170.

RETURN TO:
David H. Krumbein

David H. Krumbein

David H. Krumbein
Umatilla County Surveyor

\aff2



1998-3400394 2 of 2

State of Oregon)

County of Umatilla)

This instrument was received and recorded on
11-18-98 at 2:25
in the record of document code type DE-AFF

Location R340-0394
Document number 1998-3400394
Fee 10.00

Office of County Records

Received by

J. McNaught
Records Officer