

Found 2 1/2" brass cap on galv. iron pipe, representing the NW Corner of Sec. 7. This monument was not accepted on this survey. S.N. 1-160-C.

Found 1/2" iron pin near position of the NW Corner Sec. 7. This monument was used for area calculations for this survey. The monument may be the best remaining evidence of the corner found by G.L.O. Surveyor Otis Gould in 1941. The origin of the monument is unknown, but is of the same approximate age as the 1/2" iron pin found near the N 1/4 Corner of Sec. 7. Bearing and distance from the 1/2" pin to the brass cap: N 07°56' E 191.8'.

Found 5/8" iron pin with 1/2" alum. cap representing the North 1/4 Corner of Sec. 7. S.N. M-41-B. This monument was not accepted on this survey.

Found 1/2" iron pin of the same approximate age as the 1/2" iron pin at the NW Corner of Sec. 7. Origin of this 1/2" pin is unknown. This pin location was used for area calculations on this survey. Bearing and distance from 1/2" pin to 5/8" pin: N 78°58' W 10.74'.

NARRATIVE OF SURVEY

THE PURPOSE OF THIS SURVEY WAS TO MONUMENT THE EAST LINE OF A SMALL PARCEL OF LAND NEAR THE WEST 1/4 CORNER OF SECTION 7 AND CALCULATE ACREAGES FOR CERTAIN LANDS LOCATED IN THE NW 1/4 OF SECTION 7. THE SURVEY WAS PERFORMED AT THE REQUEST OF LAMB WESTON, INC..

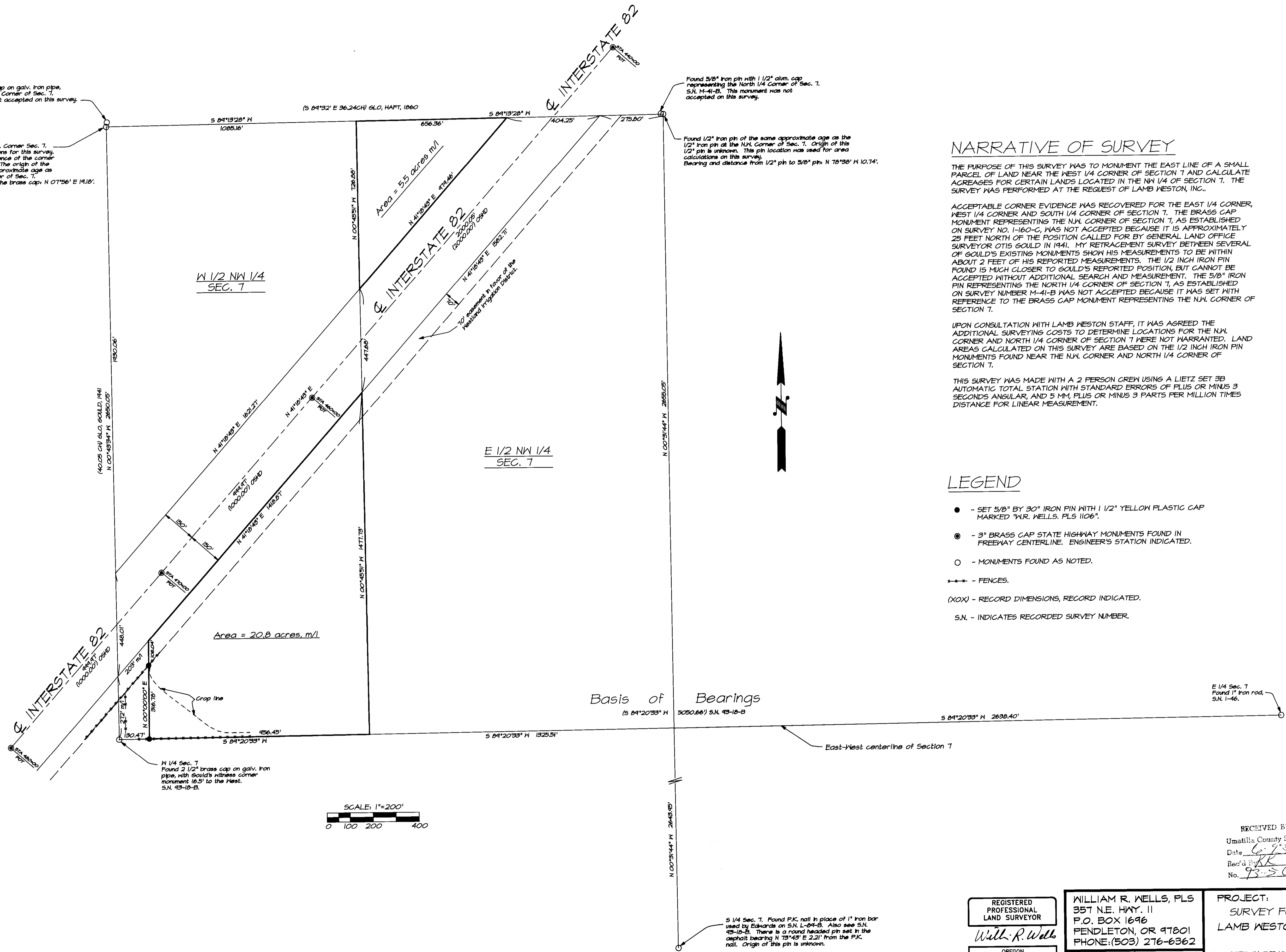
ACCEPTABLE CORNER EVIDENCE WAS RECOVERED FOR THE EAST 1/4 CORNER, WEST 1/4 CORNER AND SOUTH 1/4 CORNER OF SECTION 7. THE BRASS CAP MONUMENT REPRESENTING THE NW CORNER OF SECTION 7, AS ESTABLISHED ON SURVEY NO. 1-160-C, WAS NOT ACCEPTED BECAUSE IT IS APPROXIMATELY 25 FEET NORTH OF THE POSITION CALLED FOR BY GENERAL LAND OFFICE SURVEYOR OTIS GOULD IN 1941. MY RETRACEMENT SURVEY BETWEEN SEVERAL OF GOULD'S EXISTING MONUMENTS SHOW HIS MEASUREMENTS TO BE WITHIN ABOUT 2 FEET OF HIS REPORTED MEASUREMENTS. THE 1/2 INCH IRON PIN FOUND IS MUCH CLOSER TO GOULD'S REPORTED POSITION, BUT CANNOT BE ACCEPTED WITHOUT ADDITIONAL SEARCH AND MEASUREMENT. THE 5/8" IRON PIN REPRESENTING THE NORTH 1/4 CORNER OF SECTION 7, AS ESTABLISHED ON SURVEY NUMBER M-41-B WAS NOT ACCEPTED BECAUSE IT WAS SET WITH REFERENCE TO THE BRASS CAP MONUMENT REPRESENTING THE NW CORNER OF SECTION 7.

UPON CONSULTATION WITH LAMB WESTON STAFF, IT WAS AGREED THE ADDITIONAL SURVEYING COSTS TO DETERMINE LOCATIONS FOR THE NW CORNER AND NORTH 1/4 CORNER OF SECTION 7 WERE NOT WARRANTED. LAND AREAS CALCULATED ON THIS SURVEY ARE BASED ON THE 1/2 INCH IRON PIN MONUMENTS FOUND NEAR THE NW CORNER AND NORTH 1/4 CORNER OF SECTION 7.

THIS SURVEY WAS MADE WITH A 2 PERSON CREW USING A LIETZ SET 3B AUTOMATIC TOTAL STATION WITH STANDARD ERRORS OF PLUS OR MINUS 3 SECONDS ANGULAR, AND 5 MM. PLUS OR MINUS 3 PARTS PER MILLION TIMES DISTANCE FOR LINEAR MEASUREMENT.

LEGEND

- - SET 5/8" BY 30" IRON PIN WITH 1/2" YELLOW PLASTIC CAP MARKED "W.R. WELLS. PLS 1106".
- ⊙ - 3" BRASS CAP STATE HIGHWAY MONUMENTS FOUND IN FREEWAY CENTERLINE. ENGINEER'S STATION INDICATED.
- - MONUMENTS FOUND AS NOTED.
- - FENCES.
- (XOX) - RECORD DIMENSIONS, RECORD INDICATED.
- S.N. - INDICATES RECORDED SURVEY NUMBER.



E 1/4 Sec. 7 Found 1" iron rod, S.N. 1-46.

S 1/4 Sec. 7. Found P.K. nail in place of 1" iron bar used by Edwards on S.N. L-84-B. Also see S.N. 93-18-B. There is a round headed pin set in the asphalt bearing N 75°43' E 2.21' from the P.K. nail. Origin of this pin is unknown.

RECEIVED BY
Umatilla County Surveyor
Date: 6-93
Rec'd by: [Signature]
No. 93-50-C

REGISTERED PROFESSIONAL LAND SURVEYOR
William R. Wells
OREGON
JULY 22, 1977
WILLIAM R. WELLS
1106
EXPIRES 12-31-84

WILLIAM R. WELLS, PLS
357 N.E. HWY. 11
P.O. BOX 1696
PENDLETON, OR 97801
PHONE: (503) 276-6362
DATE: 5/16/93 DR. BY:
CK. BY: WFW NO: 93-175

PROJECT:
SURVEY FOR
LAMB WESTON, INC..
LOCATED IN THE NW 1/4 OF SECTION 7, T4N., R28E., W1M., UMATILLA COUNTY, OREGON