

31 32
6 5

2565.66'
N 89° 51' 05" E

CORNER

R=473.26'
Δ=26° 54' 17"



AIRPORT ROAD

P.S.

θ = 14° 00'

P.C.S.

222.96'
N 60° 58' 32" E
225.05'

1377.16'
S 0° 51' 44" E

182.90
N 83° 58' 58" E
182.42'

56.10'
N 88° 25' 41" E

216.52'
N 83° 34' 44" E
217.10'

θ = 14° 00'

P.T.

P.C.S.

R=339.26'
Δ=75° 32' 37"

418.61'
N 38° 33' 21" E

70'
60'

N 88° 53' 02" E
10.00'

R=349.26'
Δ=50° 32' 19"

293.18'
N 82° 23' 13" W
308.07'

P.S.C.

20' EASEMENT

24" STORM SEWER

θ = 14° 00'

P.S.

N 61° 10' 33" W
165.34'

184.86'

124.90'
N 65° 39' 21" W

P.T.

θ = 24° 00'

P.C.S.

394.73'
S 74° 35' 03" E

24" STORM SEWER

S 0° 51' 44" E

1327.01'

440.30'

47.82'
N 89° 59' 50" W
CTR. SECTION

• - SET 3/8" IRON PIN

R=537.47'
Δ=25° 18' 50"

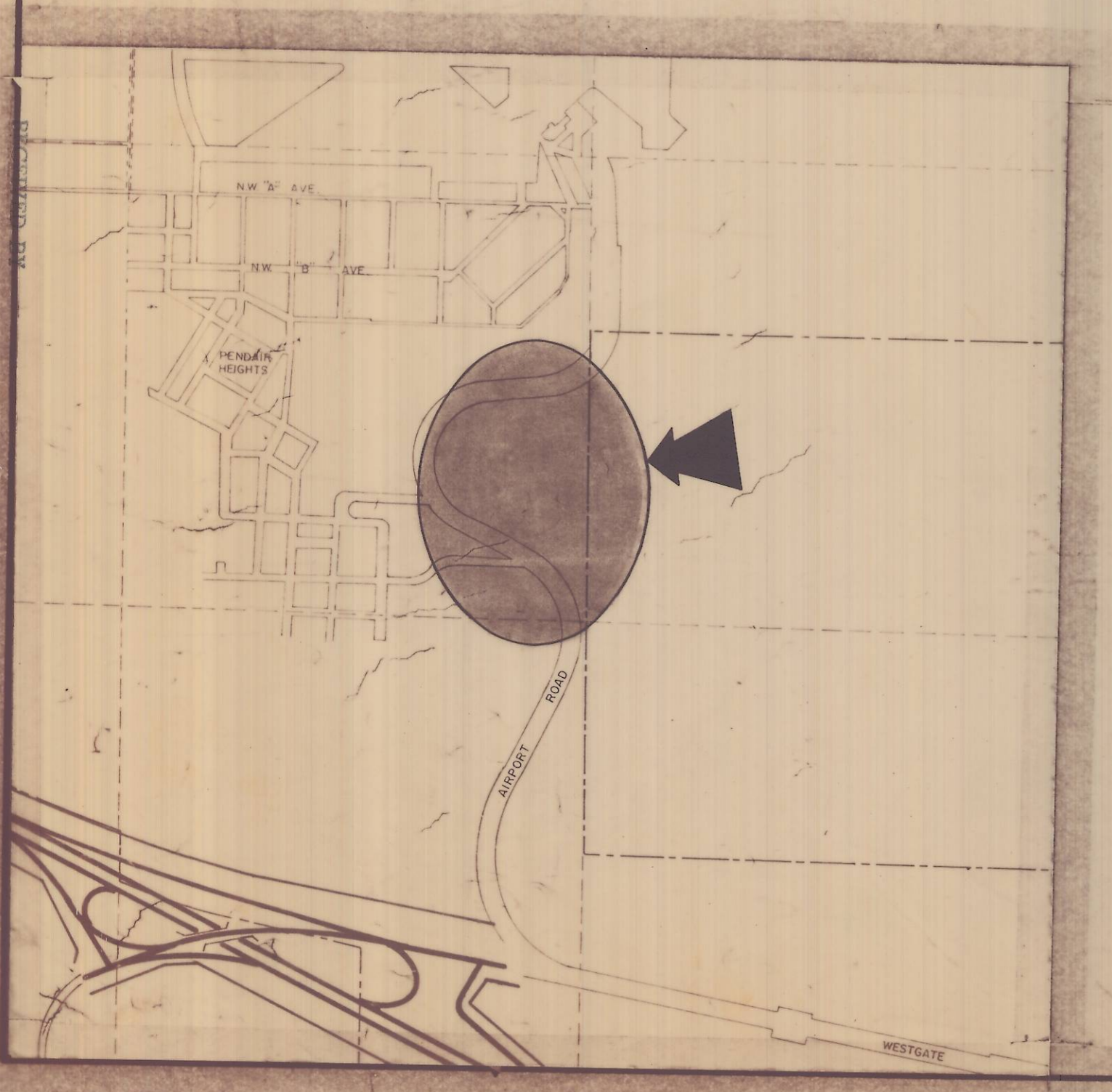
237.45'
N 28° 59' 58" W

239.54'

CITY OF PENDLETON
ENGINEERING DEPT.

OLD AIRPORT
LANDFILL PROPERTY

DATE AUG. 21, 1975 SCALE 1" = 50'
RAB



Drawn by
Date 12-8-75
No. 8-7-1310

24-7725

24-7725