

OREGON STATE PARKS & RECREATION DIVISION
 EMIGRANT SPRINGS STATE PARK
 SECTION 29, T1N, R35E, W.M.,
 UMATILLA COUNTY
 SCALE 8" = 400' AUGUST 28, 1981



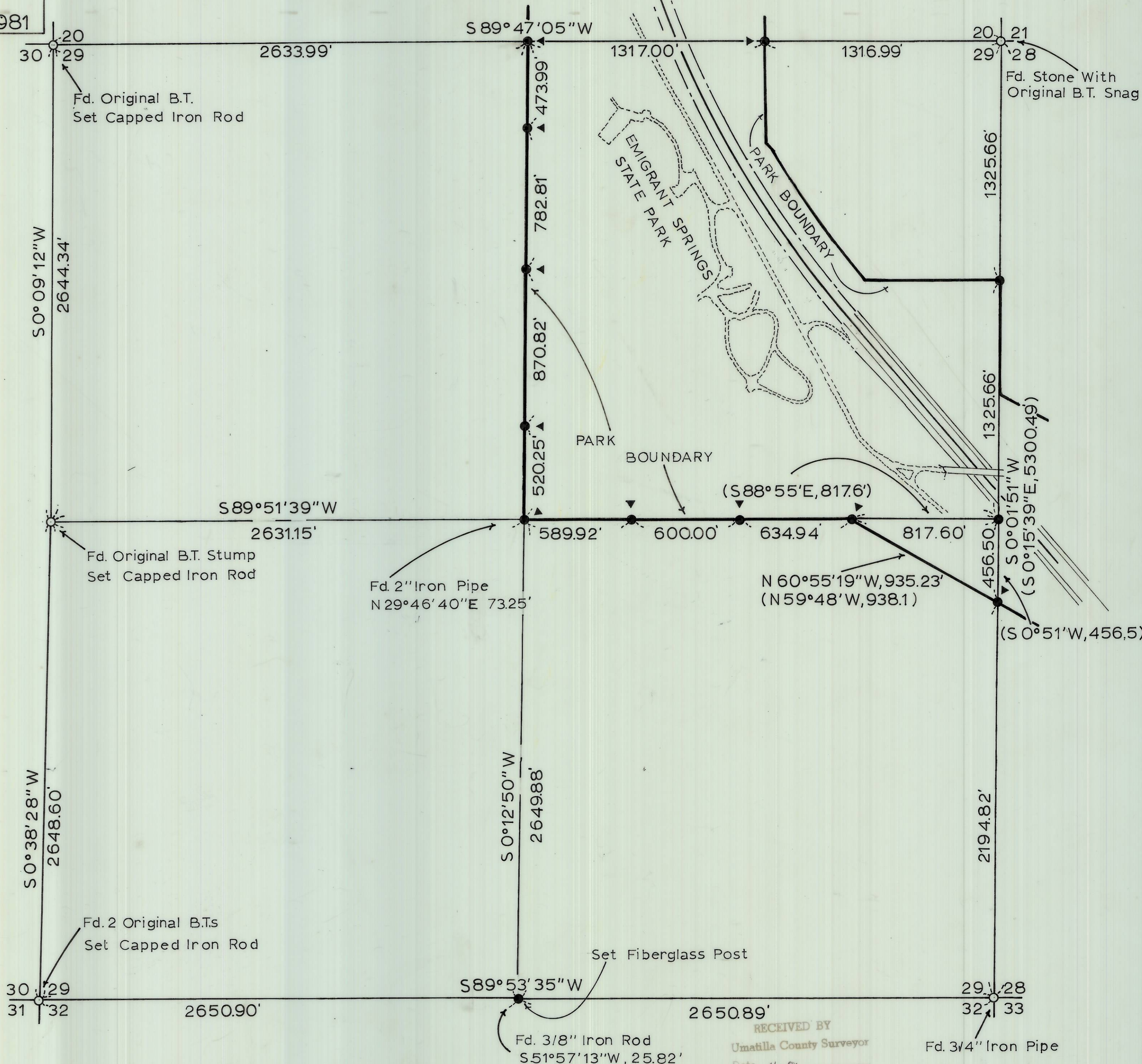
Bearing Basis Oregon State Highway Division Map
 Drawing No. 6B-1-3, Dated July, 1941.

- Indicates Monuments Found
- Indicates A 5/8" Iron Rod Set With An Alum. Cap Marked (OREGON STATE PARKS)
- ▶ Indicates A 7' Steel Post Set, With A White Paddle Marked (OREGON STATE PARKS BOUNDARY - DO NOT DISTURB)
- () Indicates Record Bearing And Distance

REGISTERED
 PROFESSIONAL
 LAND SURVEYOR

John E. Hollingsworth

OREGON
 JULY 9, 1969
 JOHN E. HOLLINGSWORTH
 691



RECEIVED BY
 Umatilla County Surveyor
 Date 11-81
 Rec'd by BLS
 No. 9-124