

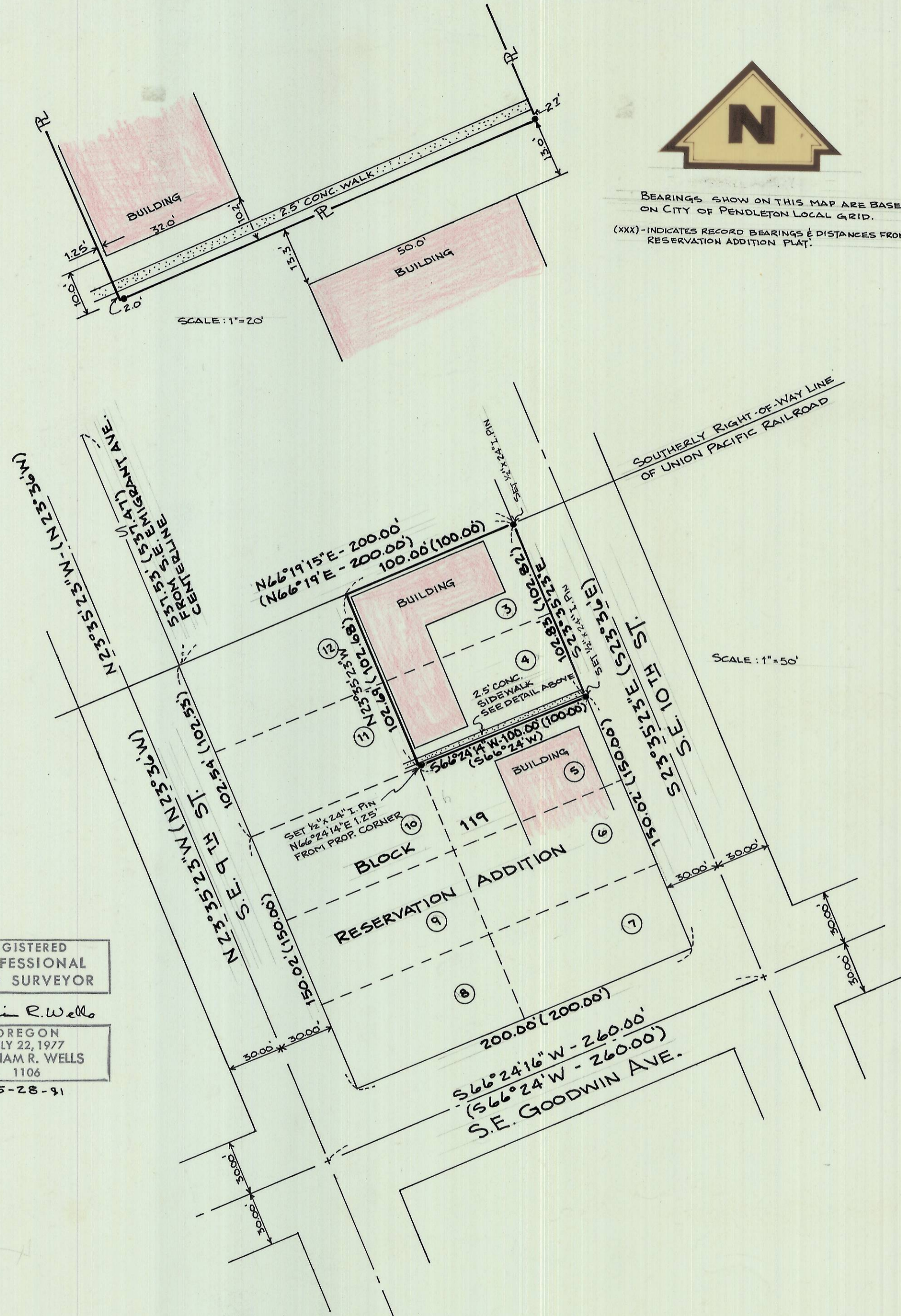
CONTROL DIAGRAM
"C.P." INDICATES COMPUTED POSITION

REGISTERED
PROFESSIONAL
LAND SURVEYOR

William R. Wells

OREGON
JULY 22, 1977
WILLIAM R. WELLS
1106
5-28-91

NARRATIVE OF SURVEY: THE SURVEYED BOUNDARIES OF LOTS 3 & 4 BLOCK 119 WERE DETERMINED BY PROPORTIONAL MEASUREMENTS FROM MONUMENTS FOUND AS SHOWN ON THE "CONTROL DIAGRAM". INFA-RED DISTANCE MEASURING EQUIPMENT AND 1 SECOND THEODOLITE WERE USED FOR MEASUREMENTS.



BEARINGS SHOWN ON THIS MAP ARE BASED ON CITY OF PENDLETON LOCAL GRID.
(XXX) - INDICATES RECORD BEARINGS & DISTANCES FROM RESERVATION ADDITION PLAT.

SCALE: 1" = 50'

WALLULIS PROJECT NO:
81-117
AGENCY PROJECT NO:

PROJECT: SURVEY FOR
HAROLD GRAYMER
OF
LOTS 3 & 4, BLOCK 119
RESERVATION ADDITION
TO THE
CITY OF PENDLETON

WALLULIS & ASSOCIATES, INC.
ENGINEERING & PLANNING

PENDLETON, OREGON 97801
503 - 276 - 1598

SCALE: AS SHOWN
DATE: 5-27-81
DES BY:
DR BY: WRM
CK BY: WRM

TITLE:

REVISIONS

DRAWING: EIVED BY
Umatilla County Surveyor
Date 6-81
Rec'd By BLS
No. 5-91-B.
SHEET 1 OF 1