

SW 1/4
163.51 acres

SECTION 3, T3N, R28E, W.M.
1" = 1000'

- denotes Brass Cap set by Donald L. Staebler in 1972.
- ⊙ denotes Brass Cap set by Krumbeln Engineering, Ltd. in 1980.
- denotes 1/2" iron pipe with a 2 1/2" Brass Cap set, and steel post set.

NOTES

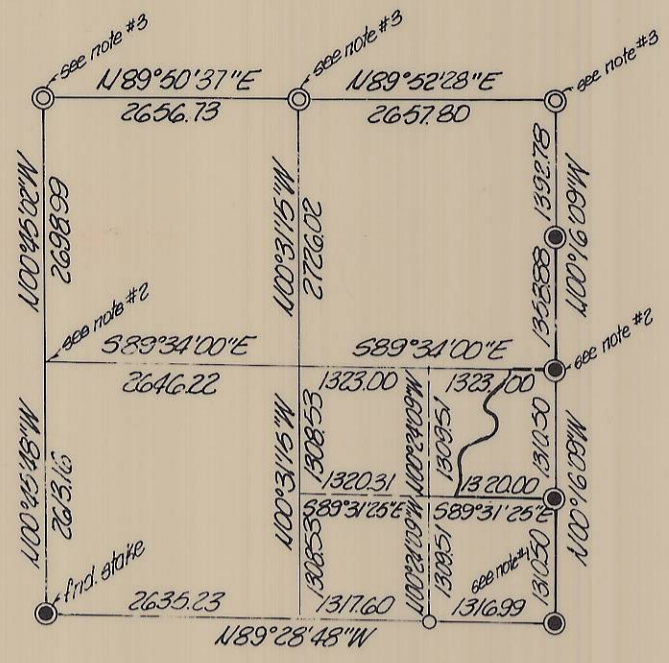
All bearings are based on USGS station "Stanfield East Base." Bearings and distances are true.
 The Southeast corner and Southwest corner of section 3 were double proportionated based on corners set and proportion by Donald L. Staebler, dated 1972, Umatilla County Survey Records drawing no. 4-107-B and corner set along Township line by Krumbeln Engineering, Ltd., drawing no. 80-22-D, for Umatilla County, dated 1980.
 $\theta = 100^{\circ}51'50''$
 Grid = 0.99993735

Terry C. Blantz

Revised February 13, 1981 - MA
 Sheet 1 of 2

RECEIVED BY
 Umatilla County Surveyor
 Date 3-5-81
 Rec'd By BLS
 No. S-14-B

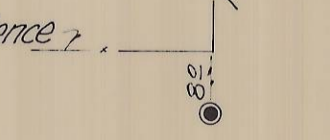
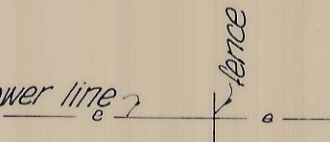
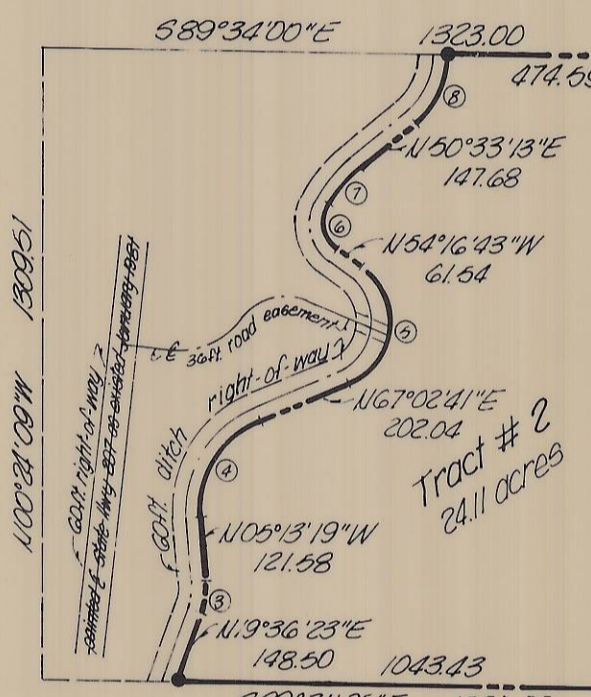
KRUMBEIN ENGINEERING CO. ENGINEERS - SURVEYORS - PLANNERS 221 S. Main, Pendleton, Oregon	SCALE 1" = 200'
	DATE Jan. 19, 1981
Survey for SIMPLOT Sections 3 & 4, T3N, R28E, W.M.	DRN BY MA
	CKD BY T.E.H.
	DRNG NO. 81-4C



SECTION 5, T3N, R28E, WM.
1" = 2000'

NOTES

1. 2in. iron pipe with stone along side, set by Bradley in 1915.
2. Computed from survey by Stranix and Omer, 1949, Umatilla County Survey Records drawing no. Q-303-B
3. Brass cap set by Krumbain Engineering, Ltd., drawing no. 80-220, for Umatilla County.



NOTES

All bearings are based on USGS sta "Stanfield East Base." Bearings and distances are true.
θ = +00°51'50"
Grid = 0.99993735

CURVE DATA

no.	Radius	Arc	Chord	Chord Bearing
1	259.28	178.38	174.88	N50°02'55"E
2	459.28	315.99	309.79	N50°02'55"E
3	189.00	81.91	81.27	N07°10'23"E
4	200.00	252.23	235.87	N30°54'41"E
5	140.00	296.47	244.11	N06°22'59"E
6	65.00	93.52	85.89	N12°25'56"W
7	270.00	104.33	103.68	N39°29'08"E
8	188.00	167.13	161.68	N25°05'08"E

Revised February 13, 1981 - 141
Sheet 2 of 2

RECEIVED BY

Umatilla County Surveyor

Date 3-5-81

Rec'd by BLS

No. 9-14-B

KRUMBEIN ENGINEERING CO.
ENGINEERS - SURVEYORS - PLANNERS
221 S. Main, Pendleton, Oregon

SCALE	1" = 400'
DATE	Jan 28, 1981
DRN BY	MAI
CKD BY	TEH
DRNG NO	81-4C

Survey for
SIMPLOT
Sections 4 & 5, T3N, R28E, WM.