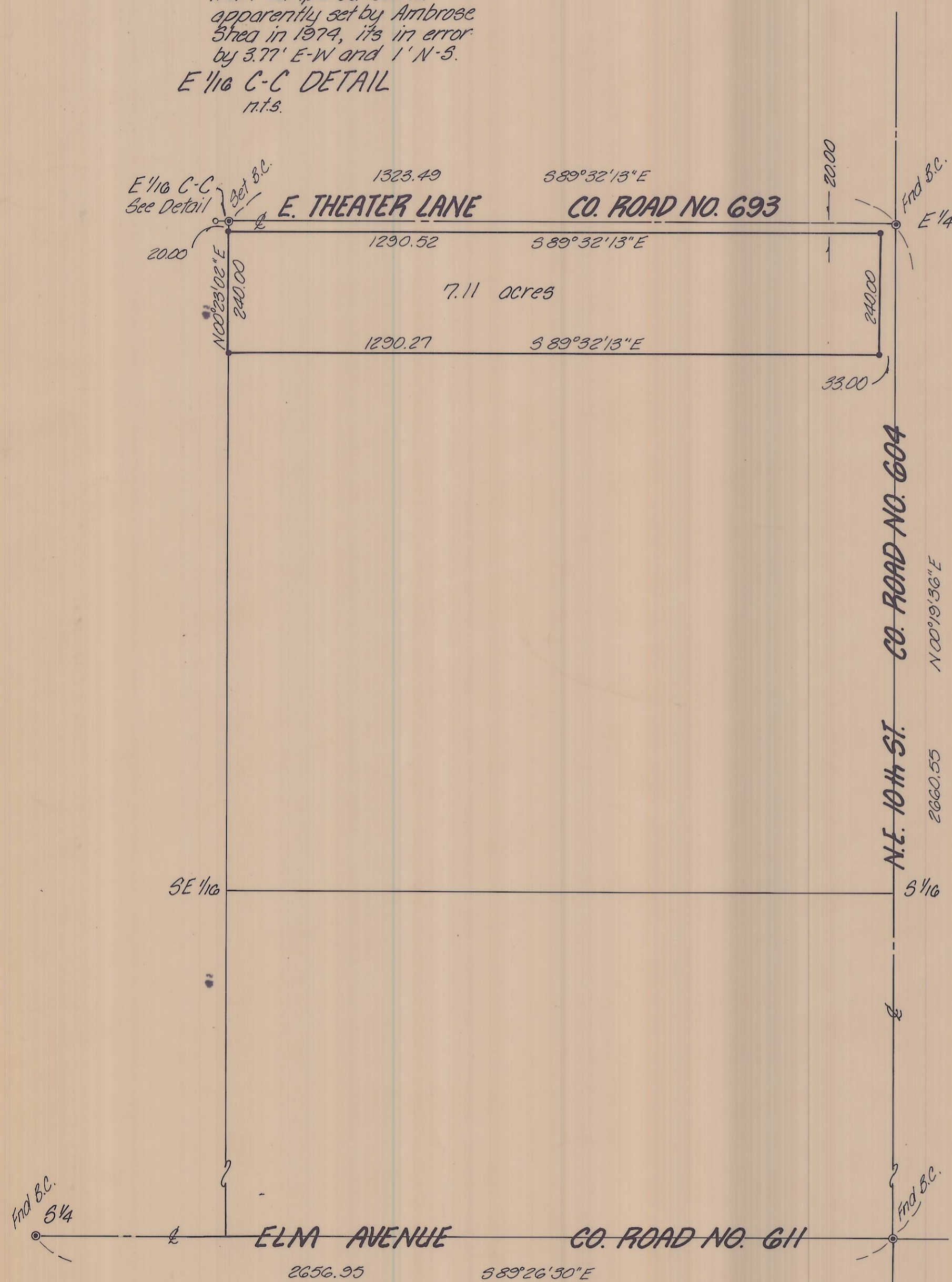
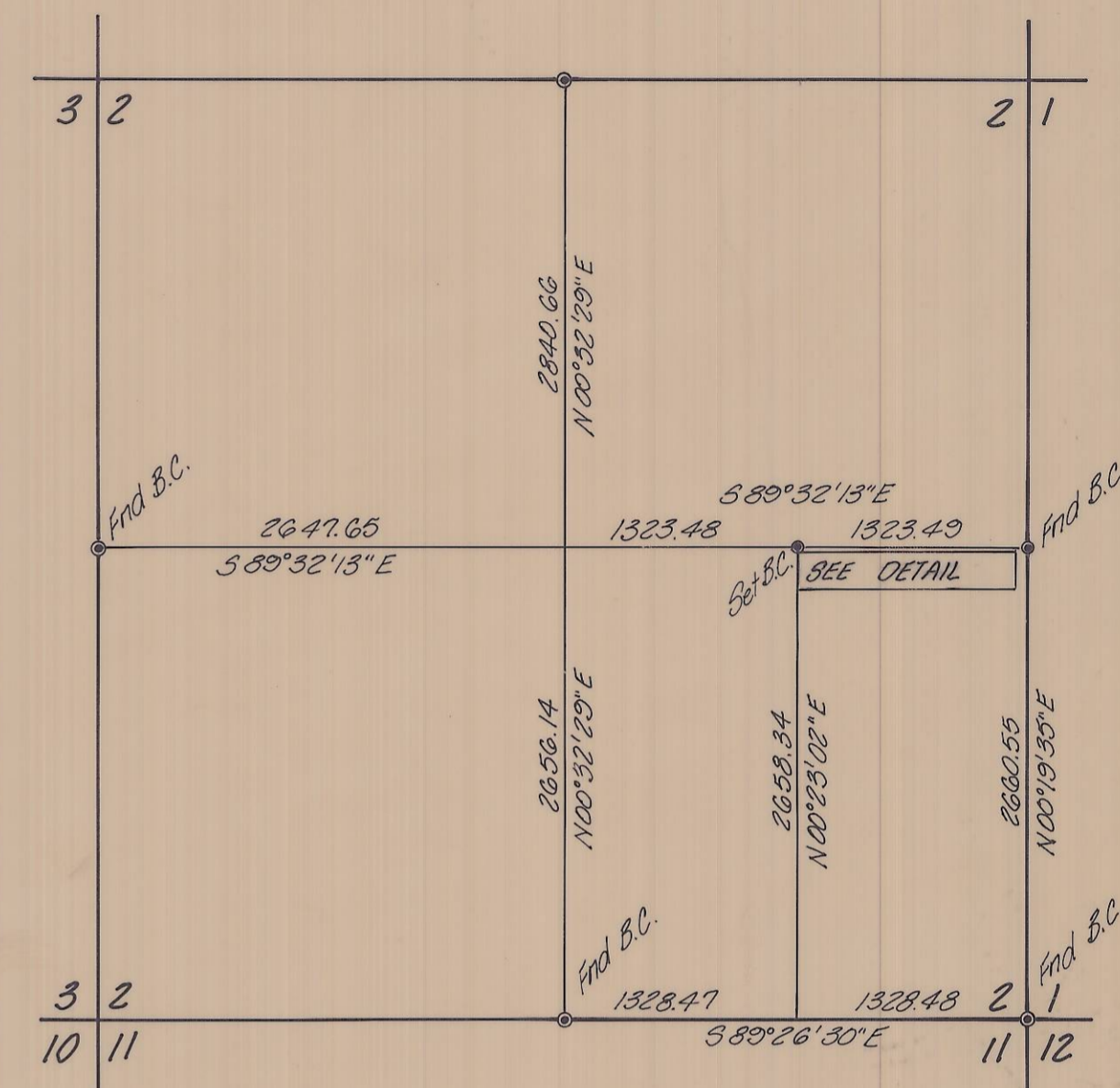


3.77' E 1/16 C-C
 Found 1 1/2" i. pipe o.d.
 S 81° 43' 44" W, 3.77 ft.
 from computed corner
 apparently set by Ambrose
 Shea in 1874, its in error
 by 3.77' E-W and 1' N-S.
E 1/16 C-C DETAIL
 n.t.s.



LEGAL DESCRIPTION

Northerly 260.00 feet of N.E. 1/4 of S.E. 1/4 of Section 2, T4N, R28E, W.M.; except any roads



Bearings are based on the Hermiston
 Remonumentation for Umatilla County,
 Co. No. R-159-C, dated 7-18-80.

All bearings and distances are true.

- denotes 3/8" i. pin set
- denotes Brass Cap as noted
- denotes monument find as noted

RECEIVED BY
 Umatilla County Surveyor
 Date 10-1-80
 Rec'd by BLS
 No. R-162-B

David H Klein

KRUMBEIN ENGINEERING CO.
 ENGINEERS - SURVEYORS - PLANNERS
 221 S. Main, Pendleton, Oregon

Survey for
BOYER
 N.E. 1/4, S.E. 1/4, Sec. 2, T4N, R28E, W.M.

SCALE
 1" = 200'
 DATE
 9-18-80
 DRN. BY
 M.L.J.
 CKD BY
 T.E.H.
 DRNG. NO.
 80-42C