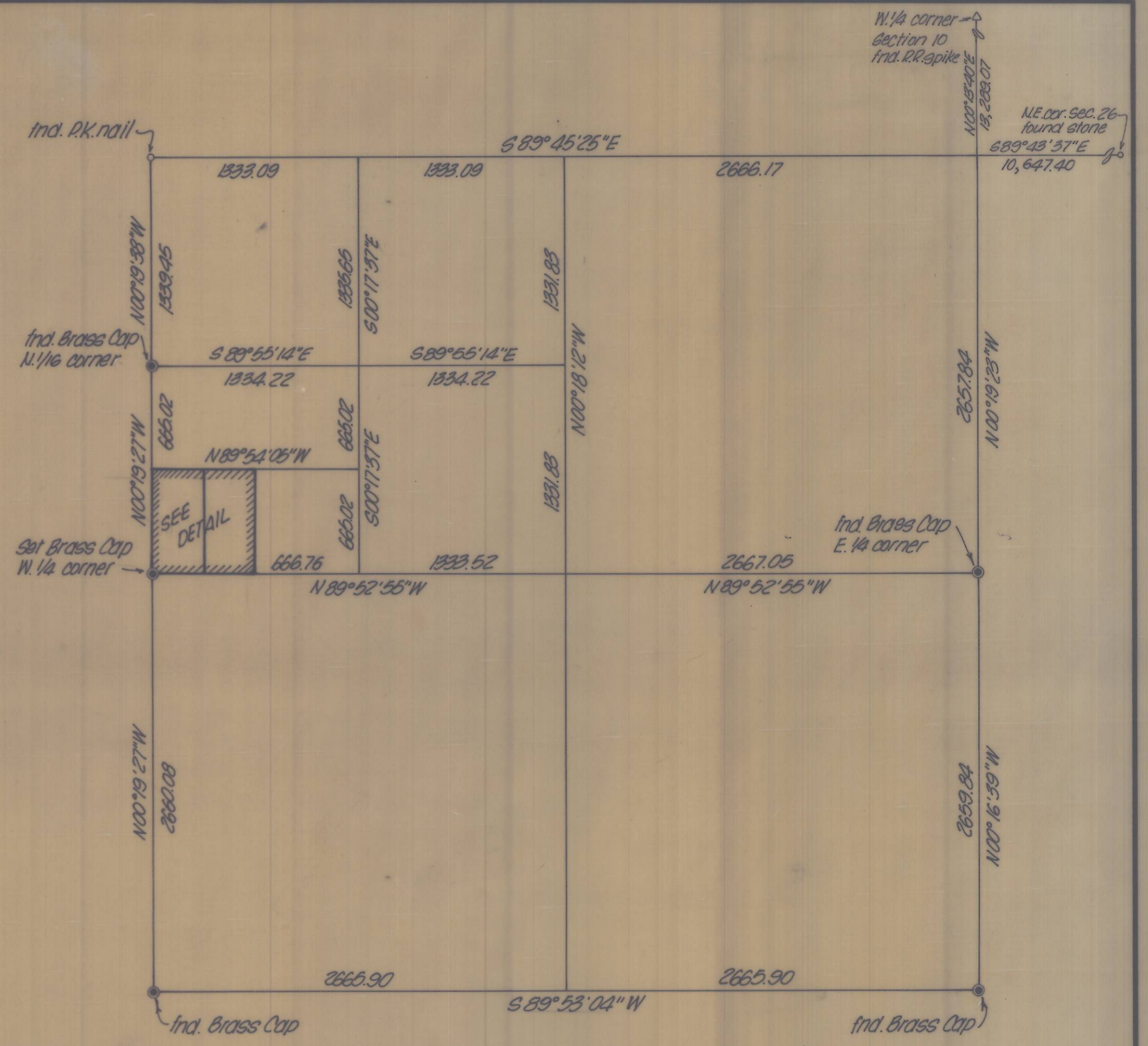


S.W. 1/4, N.W. 1/4, Section 28, T2N, R33E, W.M.  
scale: 1"=200'



Section 28, T2N, R33E, W.M.  
N.T.S.

Note:

Bearings & distances shown are true based on ties to U.G.S. station "Mission" & "Bend 2".

Legend:

- - denotes Brass Cap
- - denotes 3/16 in. pin set
- ( ) - denotes recorded distances

REGISTERED  
PROFESSIONAL  
LAND SURVEYOR

James H. Buisman

OREGON  
JULY 22, 1977  
JAMES H. BUISMAN  
1097

<b>KRUMBEIN ENGINEERING CO.</b> ENGINEERS - SURVEYORS - PLANNERS 221 S. Main, Pendleton, Oregon	SCALE as shown
	DATE Oct. 2, 1977
Survey for <b>MIKE STRATTON</b> Parcel in the SW 1/4, NW 1/4, Sec. 28, T2N, R33E, W.M.	DRN BY P.L.S.
	CKD BY T.E.H.
	DRNG. NO. #77-57C