

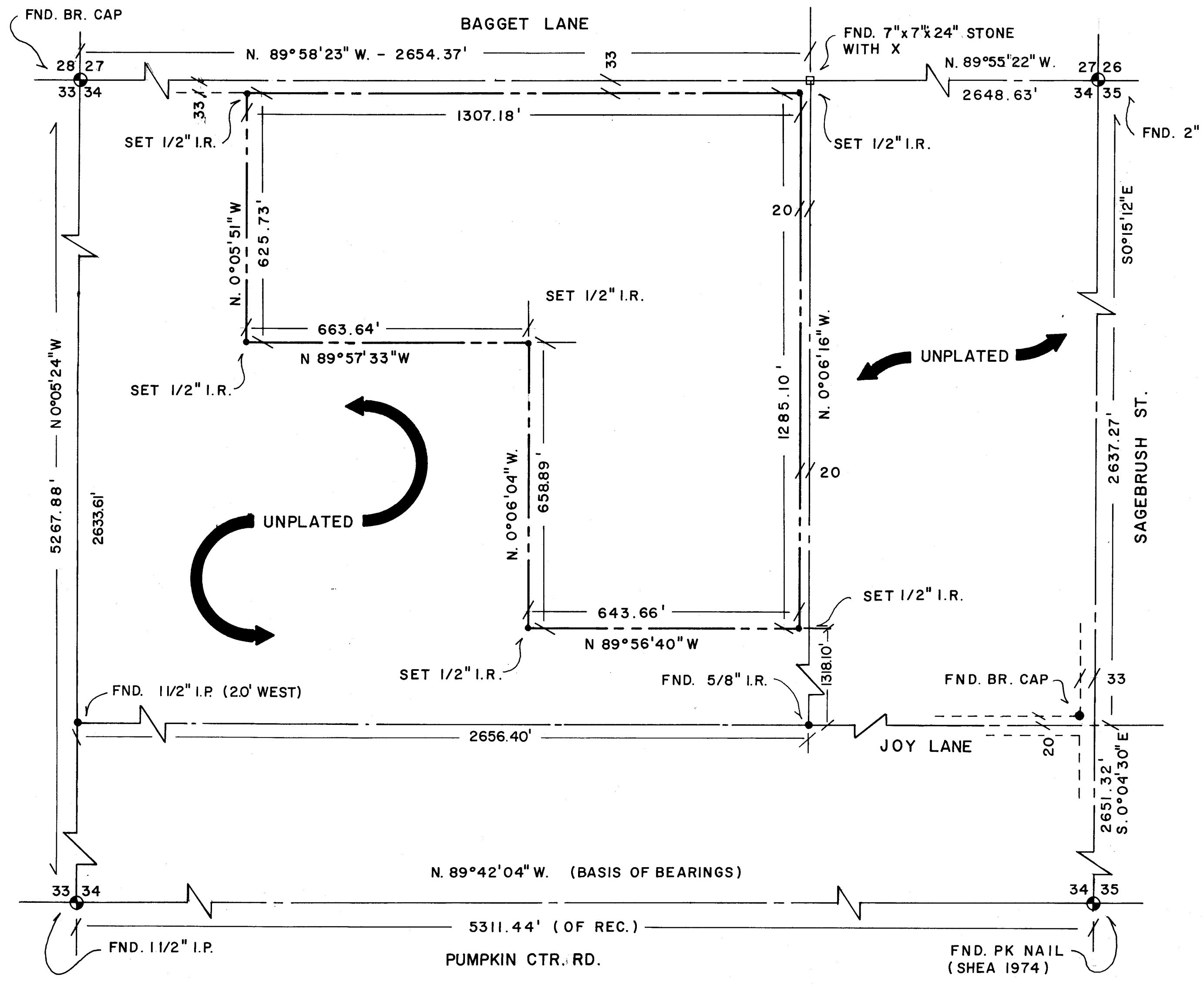
CERTIFICATION

I, G. DENNIS EDWARDS A REGISTERED PROFESSIONAL LAND SURVEYOR HEREBY CERTIFY THAT ON 7/9/75 A SURVEY WAS STARTED AND COMPLETED ON 7/14/75 OF THE LANDS SHOWN HEREON BY ME OR UNDER MY DIRECTION THAT THE PROPERTY CORNERS ARE MARKED AS SHOWN, AND THAT THIS MAP IS A TRUE AND ACCURATE REPRESENTATION OF SAID SURVEY.

REVISED: 2/22/77

DESCRIPTION

THE EAST 1/2 OF THE NE. 1/4 OF THE NW. 1/4 AND THE NW. 1/4 OF THE NE. 1/4 OF THE NW. 1/4, SEC. 34, T. 5N., R. 28 E., W.M., UMATILLA COUNTY.



REGISTERED PROFESSIONAL LAND SURVEYOR
G. Dennis Edwards
 OREGON
 JULY 16, 1971
 G. DENNIS EDWARDS
 951

LEGEND

- SECTION OR CENTER LINE
- - - RIGHT OF WAY LINE
- PROPERTY LINE
- 1/2" IRON BAR
- 7"x7"x24" STONE
- ⊙ SECTION CORNER
- ⊙ BRASS CAP



SCALE: 1" = 200'

M-063-B

SURVEY FOR	UNIVERSAL REALTY INC. (KENNEY DACK)		
GASCHLER & ASSOCIATES			
ONTARIO, OREGON		HERMISTON, OREGON	
DESIGNED BY: <i>OC</i>	DRAWN BY: <i>J.S.</i>	APPROVED BY: <i>DE</i>	
DATE: 7/16/75	DRAWING NO. B - 2	BK	PG
SHEET 1 OF 1	JOB NO. HSO-0475	REVISED:	