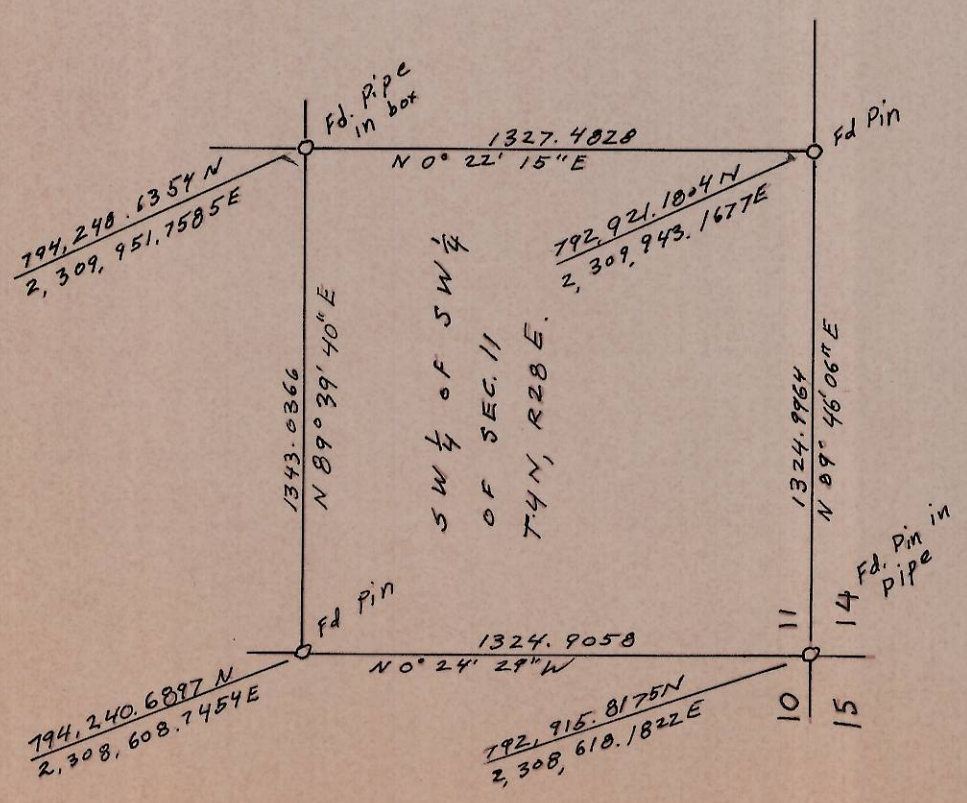
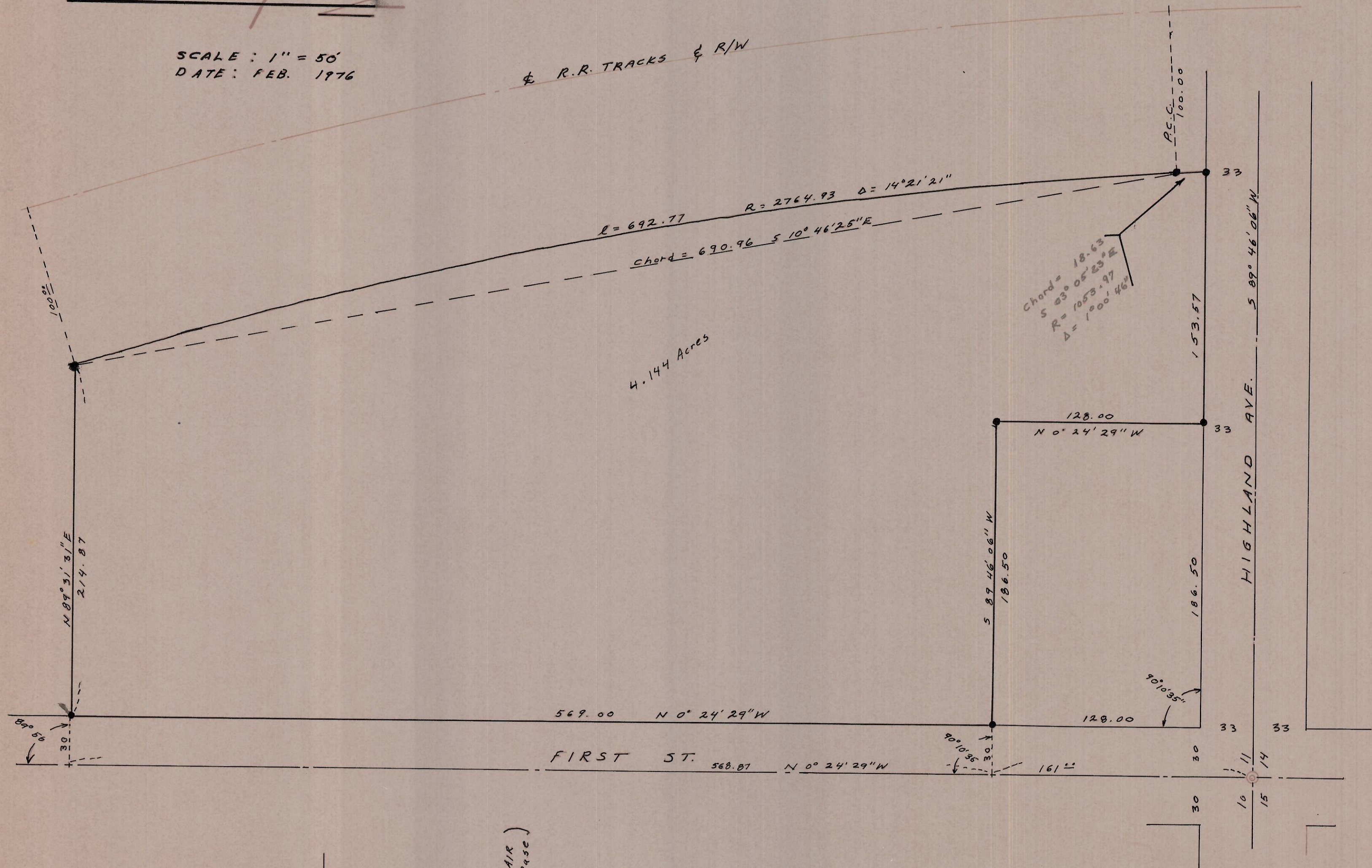


SCALE: 1" = 50'
DATE: FEB. 1976

R.R. TRACKS & R/W



DETAIL OF CONTROL
SCALE: 1" = 500'

GRID BEARINGS
TRUE DISTANCES

(HERM. BUTTE to HERM. AIR Base)
is S 56°58'39" E for Base

LEGEND

- - - - - Pin SET
- - - - - MONU. FOUND



NORPA DEVELOPMENT, INC.
P.O. Box 126 HERMISTON, OREGON 97838
TRACT SURVEY FOR
PENDLETON GRAIN GROWERS
IN S.W. 1/4 OF S.W. 1/4 OF SECTION 11,
T4N R28 E.W.M.
SCALE 1"=50' FEB 1976
J.D. 76-004