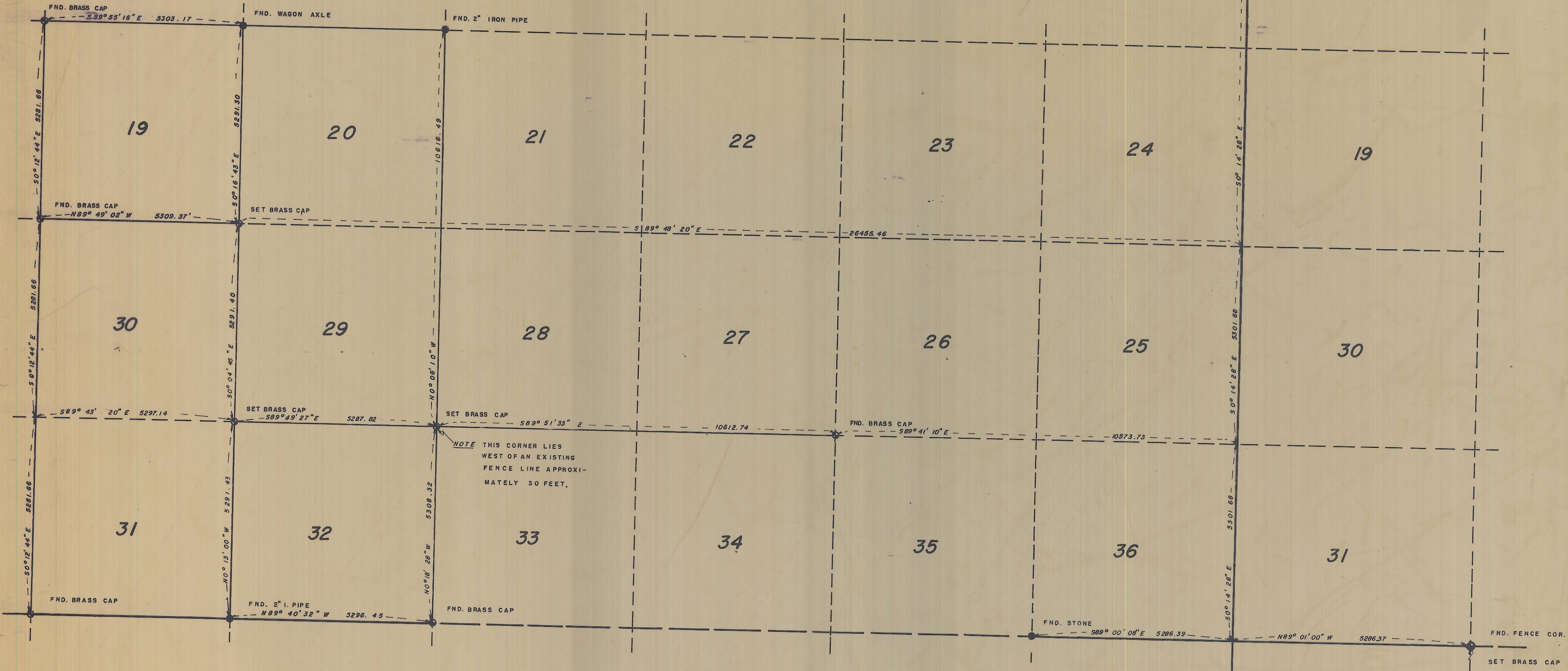


T. 5 N. R. 30 E. W. M.

T. 5 N. R. 31 E. W. M.



NOTE THIS CORNER LIES WEST OF AN EXISTING FENCE LINE APPROXIMATELY 30 FEET.

NOTE:  
BEARINGS BASED UPON TIES TO N.G.S. STATIONS "HERMISTON BUTTE" AND "JUNIPER" THOSE SHOWN ARE TRUE.

REGISTERED PROFESSIONAL LAND SURVEYOR  
David H. Krumben  
DAVID H. KRUMBEIN  
1933



I-24-B

SURVEY IN SEC. 32, T. 5 N. R. 30 E. W. M. FOR		WAYNE HARRIS CO. INC.			
ROGERS SURVEYING		ENGINEERS-SURVEYORS PENDLETON, OREGON			
SCALE	1"= 2000'	DRN. BY	DES	DRNG. NO.	
DATE	6-5-74	GKD. BY	DHK	74-404C	