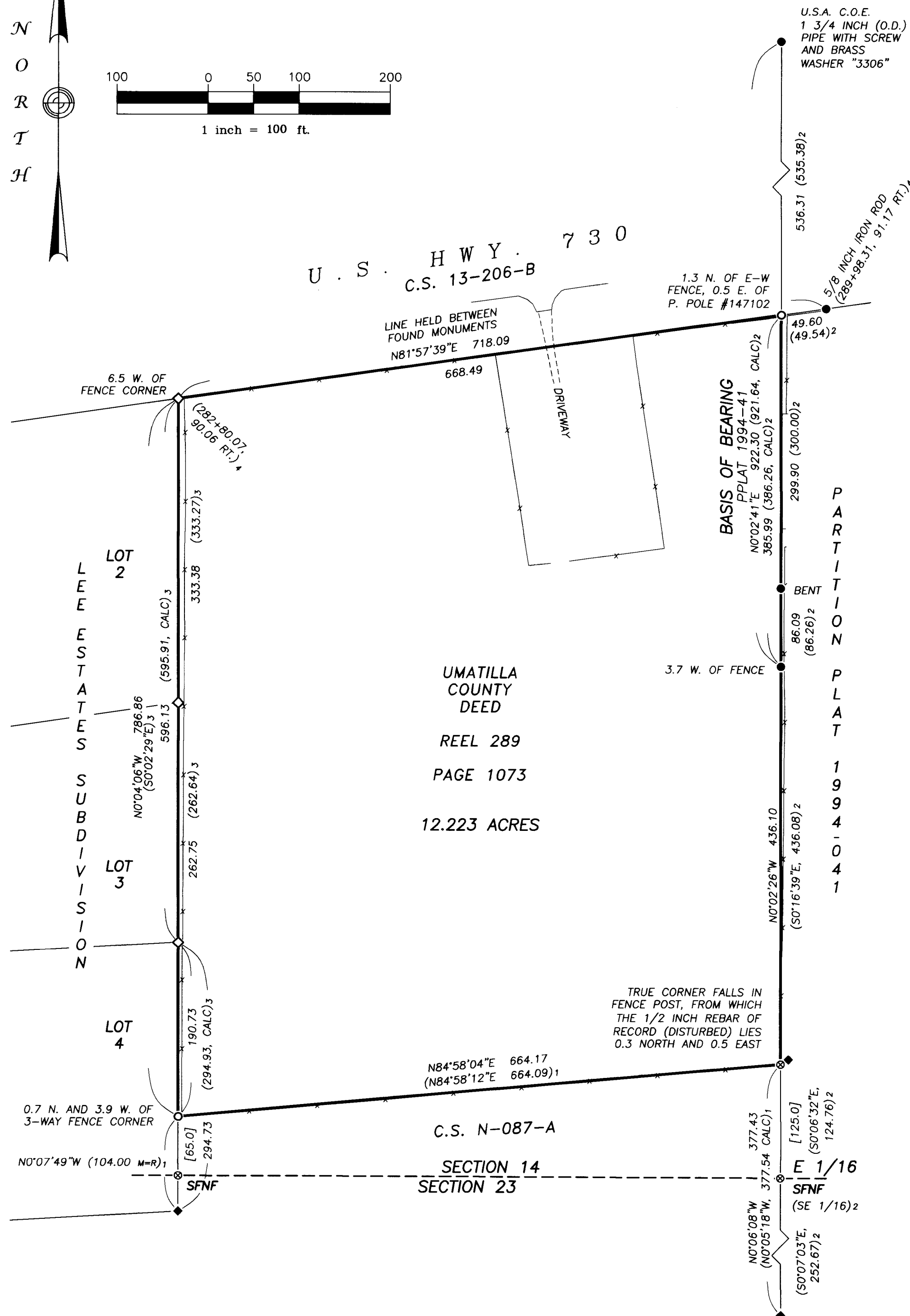
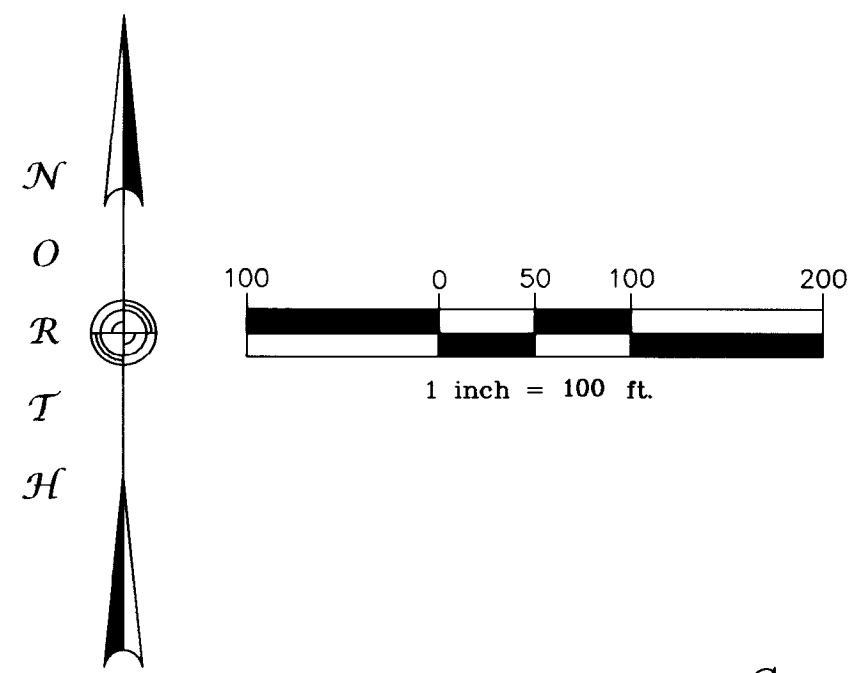


RECORD OF SURVEY

SW1/4 SE1/4, SECTION 14  
TOWNSHIP 5 NORTH,  
RANGE 27 EAST, W.M.

NEAR THE TOWN OF  
UMATILLA,

UMATILLA COUNTY,  
OREGON



LEGEND

- ◆ FOUND, 1/2 INCH IRON ROD PER CS N-087-A
- FOUND 5/8 INCH IRON ROD WITH YELLOW PLASTIC CAP PER PPLAT 1994-41, UNLESS OTHERWISE NOTED
- ◇ FOUND 5/8 INCH IRON ROD WITH YELLOW PLASTIC CAP PER "LEE ESTATES SUBDIVISION"
- SET 5/8 X 30 INCH IRON ROD WITH LT. BLUE PLASTIC CAP MKD: "WALLOWA ASSOC."
- ⊗ CALCULATED POSITION. MONUMENT NEITHER FOUND NOR SET.
- SFNF MONUMENT OF RECORD, SEARCHED FOR NOT FOUND

- PROPERTY LINE
- - - EXISTING FENCE LINES

- [XXX] RECORDED DIMENSION PER UMATILLA COUNTY DEED REEL 289 PG. 1073
- (XXX)<sub>1</sub> RECORD DIMENSION PER CS N-087-A
- (XXX)<sub>2</sub> RECORD DIMENSION PER PPLAT 1994-41
- (XXX)<sub>3</sub> RECORD DIMENSION PER "LEE ESTATES SUBDIVISION"
- (XXX)<sub>4</sub> RECORD INFORMATION PER CS 13-206-B, OREGON DEPT. OF TRANSPORTATION
- (.CALC)x CALCULATED DISTANCE PER SURVEY NOTED
- M=R MEASURED EQUALS RECORD

- CS COUNTY SURVEY
- PPLAT PARTITION PLAT

REFERENCES

UMATILLA COUNTY DEED

REEL 289 PAGE 1073

SURVEYS, PARTITIONS AND SUBDIVISIONS

CS N-087-A

PPLAT 1994-41

BOOK 13, PAGE 104, LEE ESTATES SUBDIVISION

CS 13-206-B

NARRATIVE

THIS SURVEY WAS PERFORMED AT THE REQUEST OF DON TRACY, FOR THE PURPOSE OF RECOVERING AND/OR MONUMENTING THE PROPERTY CORNERS OF UMATILLA COUNTY DEED REEL 289 PAGE 1073. THE FOUR (4) SIDES OF SAID DEED AND PROPERTY HAD BEEN PREVIOUSLY DETERMINED BY FOUR (4) SEPARATE SURVEYS OF ADJACENT PROPERTIES.

THE SOUTH LINE HAD BEEN MONUMENTED DURING COUNTY SURVEY (C.S.) N-087-A, WHICH CONCURS WITH SAID DEED.

THE EAST LINE, AND BASIS OF BEARING FOR THIS SURVEY, WAS ESTABLISHED BY PARTITION PLAT 1994-41, WHICH RECOVERED THE SOUTHEAST PROPERTY CORNER, AND A SECOND MONUMENT SET DURING C.S. N-087-A. THE SOUTHWEST PROPERTY CORNER WAS HERE REESTABLISHED PER SAID PLAT AS THE REPORTED C.S. N-087-A MONUMENT WAS FOUND TO BE SINCE DISTURBED.

THE WEST LINE HAD BEEN MONUMENTED BY LEE ESTATES SUBDIVISION, WHICH REPORTED A THIRD MONUMENT FROM C.S. N-087-A. THE SOUTHWEST PROPERTY CORNER WAS REESTABLISHED ON THE EAST LINE OF LEE ESTATES SUBDIVISION AT THE RECORD DISTANCE NORTH OF THE C.S. N-087-A MONUMENT.

THE NORTH LINE WAS HELD BETWEEN TWO (2) MONUMENTS REPORTED BY C.S. 2013-206-B, WHICH IS AN OREGON DEPT. OF TRANSPORTATION SURVEY OF U.S. HIGHWAY 730. PER SAID SURVEY, THE REPORTED CENTERLINE OFFSETS OF THE TWO (2) MONUMENTS VARY, WITHOUT NOTE OF WHETHER THEY ARE THE ACTUAL RIGHT-OF-WAY MONUMENTS.

THIS WORK WAS ACCOMPLISHED WITH TRIMBLE G.P.S. RECEIVERS, A TRIMBLE TSC-2 SURVEY CONTROLLER AND A NIKON DTM-520 THEODOLITE.

RECORD OF SURVEY

FOR : DON TRACY

LOCATED WITHIN  
SW1/4 OF SE1/4, SECTION 14,  
TOWNSHIP 5 NORTH, RANGE 27 EAST, W.M.  
NEAR THE TOWN OF UMATILLA, UMATILLA COUNTY, OREGON

Wallowa Associates

303 S.E. Alamo Street  
Enterprise, Oregon 97828  
(541) 426-9049

SCALE	SHEET No.	DATE OF SURVEY
VARIABLES	1 OF 1	Beginning: 12 OCT 20 Ending: 13 OCT 20
DRAWN BY	CHECKED	PROJECT No.
R J L	K L P	J201-01 / 3048dt

RECEIVED BY  
Umatilla County Surveyor  
Date: 11/4/20  
Recd By: CT  
Lot: 20-100-6

REGISTERED  
PROFESSIONAL  
LAND SURVEYOR

*Rodney J. Lewis*

OREGON  
JULY 14, 1998  
**RODNEY J. LEWIS**  
2872  
EXPIRES 12-31-20