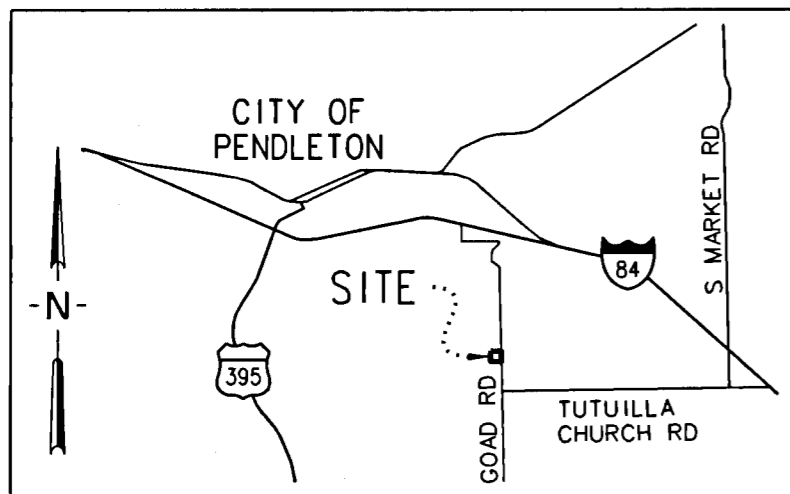
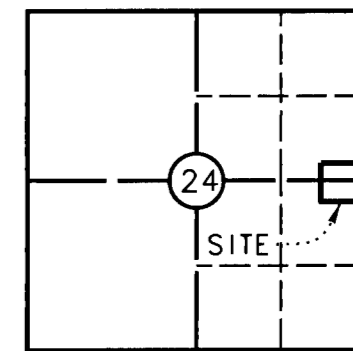


ROUNDUP SUBSTATION RECORD OF SURVEY FOR BONNEVILLE POWER ADMINISTRATION IN THE SOUTHEAST 1/4 OF THE NORTHEAST 1/4 AND THE NORTHEAST 1/4 OF THE SOUTHEAST 1/4 OF SECTION 24, T2N, R32E, W.M.; UMATILLA COUNTY, OREGON.



VICINITY MAP - NOT TO SCALE
UMATILLA COUNTY, OREGON



T.2N. R.32E.

FOUND MONUMENT TABLE			
STATION ID	GRID NORTH	GRID EAST	DESCRIPTION
①	726456.81	8650778.65	2-1/2" BRASS CAP "T2N R32E R33E S13 S18 S19 CC 2003 PLS 1106"
②	723772.94	8650869.75	2-1/2" BRASS CAP "30.00FT T2N R32E R33E 1/4 S19 2003 PLS 1106"
③	723636.22	8650842.81	2-1/2" BRASS CAP "T2N R32E R33E 1/4 S24 1993 PLS 1106"
④	722443.67	8650899.87	2-1/2" BRASS CAP "T2N R32E R33E WC 1/16 S19 1917"
⑤	721118.18	8650930.65	2-1/2" BRASS CAP "WEST 30.03 R32E T2N R33E S24 S19 S30 1982"
⑥	720995.05	8650903.46	2-1/2" BRASS CAP "T2N R32E R33E S24 S25 1993 PLS 1106"

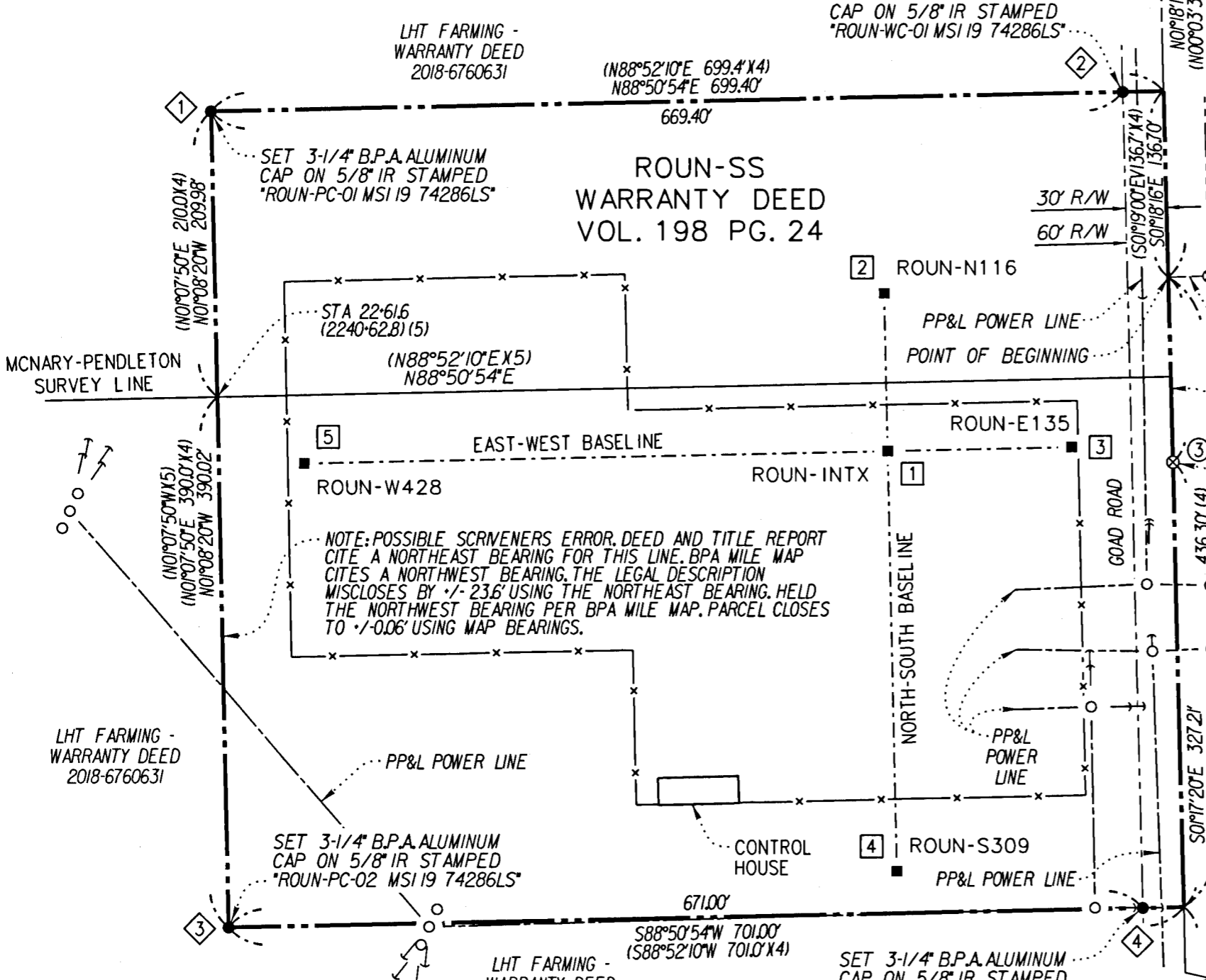
PROCEDURES

THIS SURVEY WAS PERFORMED BY FIELD TRAVERSE METHODS USING A 3 SECOND TRIMBLE S6 ROBOTIC TOTAL STATION TOGETHER WITH TRIMBLE RB AND R10 DUAL FREQUENCY RECEIVERS. AN INDEPENDENT OPUS STATIC PRIMARY CONTROL POINT WAS ESTABLISHED TO CONTROL THIS SURVEY. SECONDARY CONTROL WAS ESTABLISHED USING RTK GPS METHODS. SURVEY DATA WAS ADJUSTED TO MEET THE CHI-SQUARE TEST AT A 95% CONFIDENCE INTERVAL AND ALL ADJUSTMENTS WERE PERFORMED WITH TRIMBLE BUSINESS CENTER LEAST SQUARES ADJUSTMENT PROGRAM. THE COMBINED SCALE FACTOR OF 0.99986311 FROM NGS OPUS SOLUTION REPORT WAS UTILIZED FOR THIS PROJECT.

① WMO2N33E100400
FOUND 2-1/2" BRASS CAP
0.5" DOWN NW CORNER
SECTION 19, T2N, R33E, HELD (1)

SURVEYOR'S NARRATIVE

THE PURPOSE OF THIS SURVEY IS TO MONUMENT THE BONNEVILLE POWER ADMINISTRATION'S (B.P.A.) ROUNDUP SUBSTATION PARCEL ROUN-SS AS DESCRIBED IN WARRANTY DEED RECORDED IN VOLUME 198, PAGE 24 (DATED AUGUST 7, 1951), UMATILLA COUNTY RECORDS. MONUMENTS WERE RECOVERED THAT REPRESENT THE PERPETUATION OF THE LINE BETWEEN RANGES 32 AND 33 EAST, AS SET BY WILKES IN THE 1917 RE-SURVEY OF THE DIMINISHED UMATILLA INDIAN RESERVATION BOUNDARY. FOUND MONUMENTS WERE HELD TO ESTABLISH SAID RANGE LINE AND THE EAST PROPERTY LINE. FROM THE DEED BEGINNING POINT (THE WEST QUARTER CORNER OF SECTION 19, TOWNSHIP 2 NORTH, RANGE 33 EAST), DEED DISTANCES WERE HELD NORTH AND SOUTH ALONG THE RANGE LINE TO ESTABLISH THE NORTHEAST AND SOUTHEAST PROPERTY CORNERS. THE SOUTH PROPERTY LINE WAS ESTABLISHED BY HOLDING THE DEED ANGLE FROM A LINE BETWEEN THE SOUTHEAST PROPERTY CORNER AND SAID EAST QUARTER CORNER OF SECTION 19. THE DEED DISTANCE WAS THEN HELD TO ESTABLISH THE SOUTHWEST PROPERTY CORNER. A SCRIVENER'S ERROR IN THE DEED BEARING CITED ON THE WEST LINE CAUSED A MISCLOSURE OF APPROXIMATELY 23.6 FEET IN EASTING, BUT IT WAS APPARENT FROM BPA SUBSTATION MAP NO. 51140, THAT THE DEED BEARING OF NORTH 01°07'50" EAST WAS INTENDED TO BE NORTH 01°07'50" WEST, WHICH REDUCED THIS MISCLOSURE IN EASTING TO 0.06'. THE NORTHWEST CORNER WAS ESTABLISHED BY HOLDING THE CALCULATED BEARING OF THE SOUTH PROPERTY LINE (AS THEY ARE CITED AS BEING PARALLEL IN THE DEED) AND THE DEED DISTANCE. THIS SOLUTION WAS ALSO CONSISTENT WITH A SOLUTION USING A DISTANCE/DISTANCE INTERSECTION. THE WEST PROPERTY LINE WAS HELD TO THE COMPUTED CORNERS AS STATED ABOVE, AND WAS IN AGREEMENT WITH DISTANCE CALLS TO SURVEY LINE OF THE MCNARY-PENDLETON TRANSMISSION LINE.



LEGEND

- B.P.A. SUBSTATION BOUNDARY
- x-x-x- 7" CHAIN LINK FENCE WITH BARBED WIRE CAP
- OVERHEAD POWER
- B.P.A. SUBSTATION BASELINE
- RANGE LINE
- RIGHT-OF-WAY
- ⊕ FOUND PLSS CORNER MONUMENT
- ⊙ CALCULATED PLSS CORNER MONUMENT
- B.P.A. POWER POLE
- SET 5/8" x 30" IRON ROD WITH 3-1/4" ALUMINUM CAP INSCRIBED "U.S.D.O.E. BONNEVILLE PWR. ADM. 74286LS"
- ⊗ FOUND MONUMENT AS DESCRIBED
- B.P.A. CONSTRUCTION BASELINE MONUMENT
- GUY ANCHOR

REFERENCES

- () (1) SURVEY 03-03-B
- () (2) SURVEY 93-54-C
- () (3) SURVEY 82-50-B
- () (4) DEED VOL 198 PG 24
- () (5) BPA MILE MAP SERIAL NUMBER 51140

BASIS OF BEARINGS

BEARINGS AND COORDINATES SHOWN ARE GRID, BASED ON THE OREGON STATE PLANE COORDINATE SYSTEM, NORTH ZONE (3601), NAD83(2011)(EPOCH:2010.0000). INTERNATIONAL FOOT. DISTANCES SHOWN HEREON ARE GROUND DISTANCES, TO CONVERT DISTANCES SHOWN TO GRID, MULTIPLY BY 0.99986311.

TITLE REPORT

PIONEER TITLE COMPANY, OWNERSHIP AND ENCUMBRANCE REPORT ORDER NO. 99534, EFFECTIVE DATE JULY 9, 2019 WAS REFERENCED IN PREPARING THIS RECORD OF SURVEY.

LEGAL DESCRIPTION

ROUN-SS - WARRANTY DEED - VOL 198 PG 24
A PARCEL OF LAND IN THE SE 1/4 NE 1/4 AND NE 1/4 SE 1/4 OF SECTION 24, TOWNSHIP 2 NORTH, RANGE 32 EAST OF THE WILLAMETTE MERIDIAN, UMATILLA COUNTY, OREGON, MORE PARTICULARLY DESCRIBED AS FOLLOWS:
BEGINNING AT THE QUARTER SECTION CORNER ON THE WEST LINE OF SECTION 19, TOWNSHIP 2 NORTH, RANGE 33 EAST, WILLAMETTE MERIDIAN; THENCE S. 1°16'00" E. ALONG THE LINE COMMON TO SAID SECTION 19, TOWNSHIP 2 NORTH, RANGE 33 EAST, WILLAMETTE MERIDIAN, AND SECTION 24, TOWNSHIP 2 NORTH, RANGE 32 EAST, WILLAMETTE MERIDIAN, A DISTANCE OF 463.3 FEET; THENCE S. 88°52'10" W. A DISTANCE OF 701.0 FEET; THENCE N. 1°07'50" E. A DISTANCE OF 390.0 FEET TO SURVEY STATION 2240-62.8, A POINT ON THE SURVEY LINE OF THE MCNARY-PENDLETON TRANSMISSION LINE; THENCE CONTINUING N. 1°07'50" E. A DISTANCE OF 210.0 FEET; THENCE N. 88°52'10" E. A DISTANCE OF 699.4 FEET TO A POINT ON THE LINE COMMON TO SAID SECTIONS 24 AND 19; THENCE S. 1°19'00" E. ALONG SAID LINE, A DISTANCE OF 136.7 FEET TO THE POINT OF BEGINNING, CONTAINING 9.64 ACRES, MORE OR LESS;
SUBJECT TO THE RIGHTS OF THE PUBLIC IN AND TO UMATILLA COUNTY ROAD NO. 371.

SET MONUMENT TABLE				
POINT	STATION ID	GRID NORTH	GRID EAST	DESCRIPTION
①	ROUN-PC-01	723894.85	8650137.48	3-1/4" B.P.A. ALUMINUM CAP "ROUN-PC-01 MSI 19 74286LS"
②	ROUN-WC-01	723908.30	8650806.66	3-1/4" B.P.A. ALUMINUM CAP "ROUN-WC-01 MSI 19 74286LS"
③	ROUN-PC-02	723295.05	8650149.41	3-1/4" B.P.A. ALUMINUM CAP "ROUN-PC-02 MSI 19 74286LS"
④	ROUN-WC-02	723308.54	8650820.18	3-1/4" B.P.A. ALUMINUM CAP "ROUN-WC-02 MSI 19 74286LS"

CONSTRUCTION BASELINE MONUMENT TABLE				
POINT	STATION ID	GRID NORTH	GRID EAST	DESCRIPTION
①	ROUN-INTX	723644.63	8650633.32	3-1/4" B.P.A. ALUMINUM CAP "ROUN-INTX MSI 19"
②	ROUN-N116	723760.58	8650631.01	3-1/4" B.P.A. ALUMINUM CAP "ROUN-N116 MSI 19"
③	ROUN-E135	723647.31	8650768.28	3-1/4" B.P.A. ALUMINUM CAP "ROUN-E135 MSI 19"
④	ROUN-S309	723335.73	8650639.46	3-1/4" B.P.A. ALUMINUM CAP "ROUN-S309 MSI 19"
⑤	ROUN-W428	723636.12	8650205.47	3-1/4" B.P.A. ALUMINUM CAP "ROUN-W428 MSI 19"

REGISTERED PROFESSIONAL LAND SURVEYOR
Carla J. Merritt
OREGON
JULY 13, 2004
CARLA JO MERRITT
74286LS

RENEWS: DEC. 31, 2020
9-9-19
GRID NORTH
COMBINED SCALE FACTOR: 0.99986311
100 0 50 100 200
1 INCH = 100 FEET

SECTION 24, TOWNSHIP 2 NORTH, RANGE 32 EAST, W.M.

Mackay Spósito

ENERGY PUBLIC WORKS LAND DEVELOPMENT
www.mackaysposito.com

1325 SE TECH CENTER DRIVE, SUITE 140
VANCOUVER, WA 98683
VANCOUVER: (360) 695-3411
PORTLAND: (503) 289-6726
FAX (360) 695-0833

CALC BY: SRF CHECKED BY: CJM DRAWN BY: AJS JOB NO.: 17171

SER NO. 336864-C FILE: Roundup Substation ROS SHEET 1 OF 1