

BASIS OF BEARING

The Southeast corner of Section 11 to the Northeast corner of Section 2, Township 2 South, Range 35 East of the Willamette Meridian being North 0°02'02" East, as per Union County Survey Number 027-2003

SCALE: 1"=1000'

REFERENCE MATERIAL

Umatilla County Monumentation Records
 Survey Number 121
 Survey Number J-077-B
 Survey Number M-034-A
 Survey Number M-046-C
 Survey Number 94-112-B
 Survey Number 95-168-B
 Survey Number 06-469-B
 Survey Number 14-011-C
 Survey Number 18-105-B
 Partition Plat 1992-11

Field Notes for GLO Contract Number 451, dated June 12, 1882, executed by Rufus Moore

Amended Field Notes for GLO Special Contract dated May 4, 1887, executed by James Currin and James Noland

Field Notes for GLO Contract Number 635, dated April 19, 1895, executed by Manius Buchanan

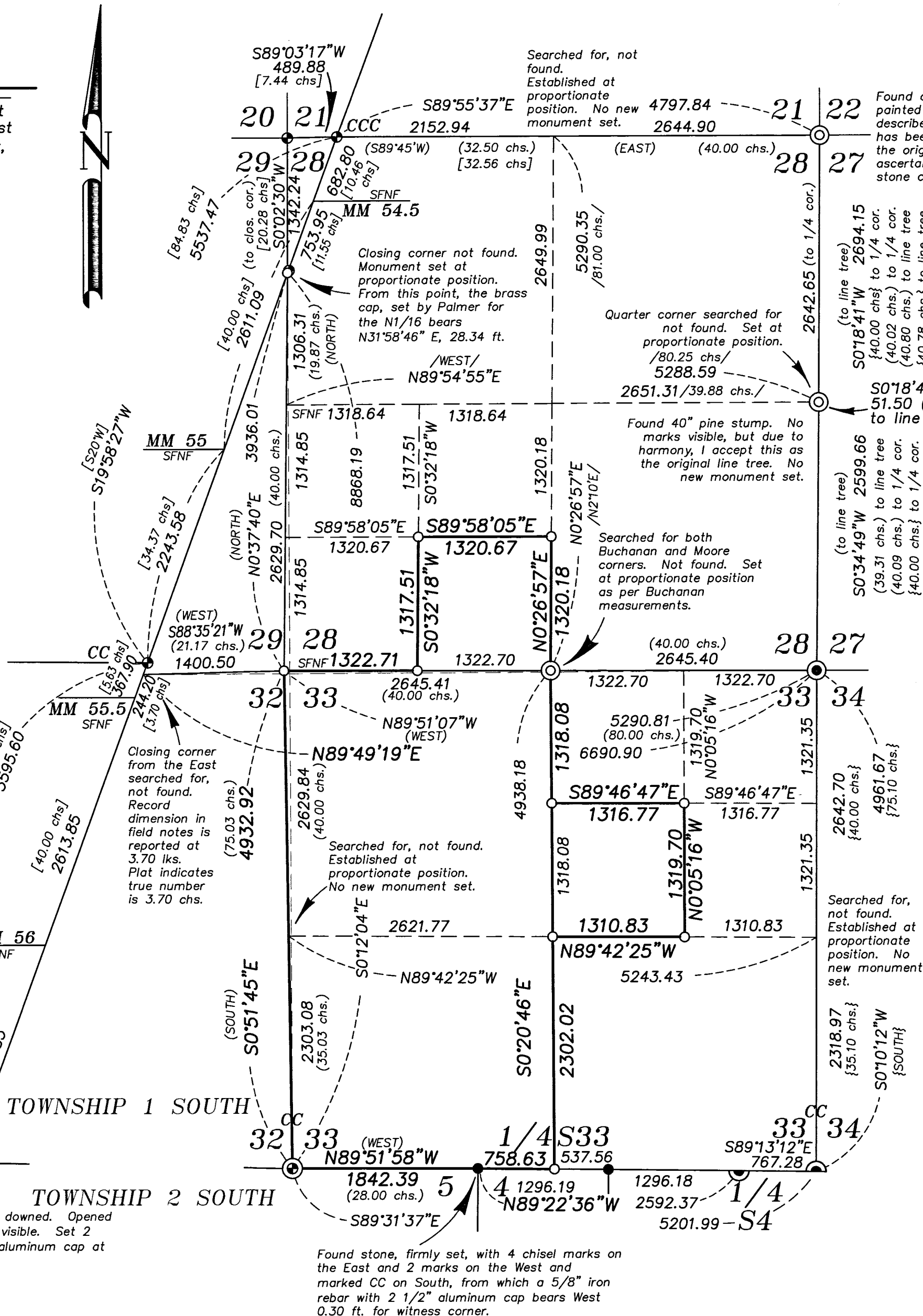
Field Notes for GLO Survey, Resurvey and Retracement, executed by L.E. Wilkes, under Special Instructions dated April 18, 1917 included in Group No. 38

DEED REFERENCES

Microfilm Document Number 2013-6120649
 Microfilm Document Number 2013-6120653

Found unrecorded 1" iron pipe, accepted in Survey M-046-C. Bears N19°12'50"E, 319.68 ft. from MM 56.5. Wilkes 2" iron pipe with brass cap lying horizontal, approx 40 ft. to the West. Its original position could not be ascertained.

Found 12" fir tree, dead and downed. Opened blaze, scribe marks "1/2 M" visible. Set 2 1/2" aluminum pipe with 3" aluminum cap at stump hole position.



LEGEND

- Found 1" iron pipe with 2 1/2" brass cap, marked as per Umatilla County monumentation records
- Found 2 1/2" iron pipe with 2 1/2" brass cap, set by Survey Number M-046-C
- ⊙ Found 2" iron pipe with 2 1/2" brass cap, set by GLO survey executed by L.E. Wilkes
- ◆ Found unrecorded 1" iron pipe
- ◐ Found 5/8" iron pin with 2" aluminum cap marked as per Umatilla County Monumentation records
- Found 5/8" iron pin with 2 1/2" aluminum cap marked as per Umatilla County Monumentation records, set by Survey Number 18-105-B
- ⊙ Set 2 1/2"x30" aluminum pipe with 3" aluminum cap, marked as per Umatilla County monumentation records, filed separately
- Set 5/8"x30" iron rebar with 2" aluminum cap, marked as per Umatilla County monumentation records, filed separately
- { } Record measurement as per field notes of GLO Contract No. 451, dated June 12, 1882, executed by Rufus Moore
- [] Record measurement as per amended field notes for GLO Special Contract dated May 4, 1887, executed by James Currin and James Noland
- () Record measurement as per field notes GLO Contract Number 635, dated April 19, 1895, executed by Manius Buchanan
- / / Record measurement as per Survey 121

NARRATIVE

This survey was done at the request of Patrick Marolla, on behalf of Hancock Forest Management, land manager for the land within. Mr. Marolla wanted select corners set in Sections 28 and 33 prior to logging.

These sections were only partially completed by the original GLO survey as this was done prior to the reservation boundary survey. The East portion of the Sections were surveyed by Rufus Moore in 1882, only extending to the quarter corners. The reservation boundary and the subdivision of the township boundary was done by Currin and Noland in 1887. Sections 28 and 33 were completed by Manius Buchanan in 1895.

I find and recover the monuments as shown hereon. I make a diligent search for original GLO monuments that control Sections 28 and 33. At the Northeast corner of Section 28 there is a collar of stone, the stones which have remnants of red paint, as called in monumentation record filed by Pat Gaylord in 1981. The original monument was a post. Bearing trees stumps called out by Gaylord have since been decayed or removed except for the Southeast bearing tree. I believe this tree has been uprooted and has been moved due to the direction of the blaze as well as its relationship with the stone mound and is therefore unreliable as an accessory. At this corner I accept the mound of stone position. Tracing the line South, I can find no remnants of the East quarter corner of Section 28, but find a 40" pine stump very harmonious with the record position of the line tree. Though I can find no marks on the stump, due to the size and age of the stump as well as the lack of pine species within the area, I accept this as being the original line tree. I can find no other controlling monuments within these sections that have not been brought to county standard.

To place the corners along the reservation boundary, I search for mile markers and closing corner monuments from the Currin and Noland subdivision along the reservation boundary. At the closing corner between Sections 28 and 29, I find the monument set by Palmer as the North 1/16th corner location, but due to the discovery of the Southeast corner of Section 28, the controlling monuments that would be used to break this section are now different from this survey. I reject using this monument as a controlling monument and place the closing corner position by proportionate measurement, using Currin and Noland's distances. Heading South along the line, I can find no other monuments until the closing corner on the South line of the Township. The monument set by L.E. Wilkes was lying horizontally, obviously disturbed and out of position, and no original accessories remain. A 1 inch iron pipe, unrecorded but accepted by Palmer in Survey M-046-C, are

still in existence. I continue to Mile 56.5 where I find the original tree used as the corner. As the closing corner would be a corner of minimal control, I base my proportion of Currin and Noland mile markers off of the 56.5 mile marker.

To place the closing corner between Sections 29 and 32 on the East side of the boundary I use Buchanan's call of 3.70 chains North of the mile marker 55.5 position. In his field notes he indicates that he falls 3.70 links North, however, the plat seems to indicate a 3.70 chain call. I find the 3.70 chain call to be a more harmonious fit with his record measurements.

The South line was originally established by Cooper from the East, who surveyed only up to the North quarter corner of Section 4 in 1881. The line was completed by Manius Buchanan, who held the township to the South as senior. In his subdivision of Township 1 South, he sets closing corners along the township line. Despite Buchanan setting closing corner monuments, due to him making a retracement of the senior line, I hold the closing corner monuments and establish a point at midpoint as measured along the line. The difference between using this method and establishing a point at midpoint between the Southeast and Southwest corners and moving in a cardinal direction to the senior line is minimal.

Lost corners are placed by proportionate methods. Subdivision of the section is as per BLM Manual of Instructions 2009. I find no other unusual conditions with this survey.

RECEIVED BY
 Umatilla County Surveyor
 Date: 8/13/19
 Rec'd By: CT
 No.: 19-079-B

REGISTERED
 PROFESSIONAL
 LAND SURVEYOR

OREGON
 JUNE 2, 2010
 JEFFREY S. HSU
 83571

Renewal Date: June 30, 2021

BAGETT, GRIFFITH & BLACKMAN
 2006 Adams Avenue, LaGrande, Oregon
 Map of Survey

Subdivision of Sections 28 and 33,
 Township 1 South, Range 35 East of the
 Willamette Meridian

UMATILLA COUNTY, OREGON

SURVEYED FOR	Hancock Forest Management
SURVEYED BY	J. S. H.
Scale: 1" = 1000'	Drawn by: J. S. H. June-July 2019