

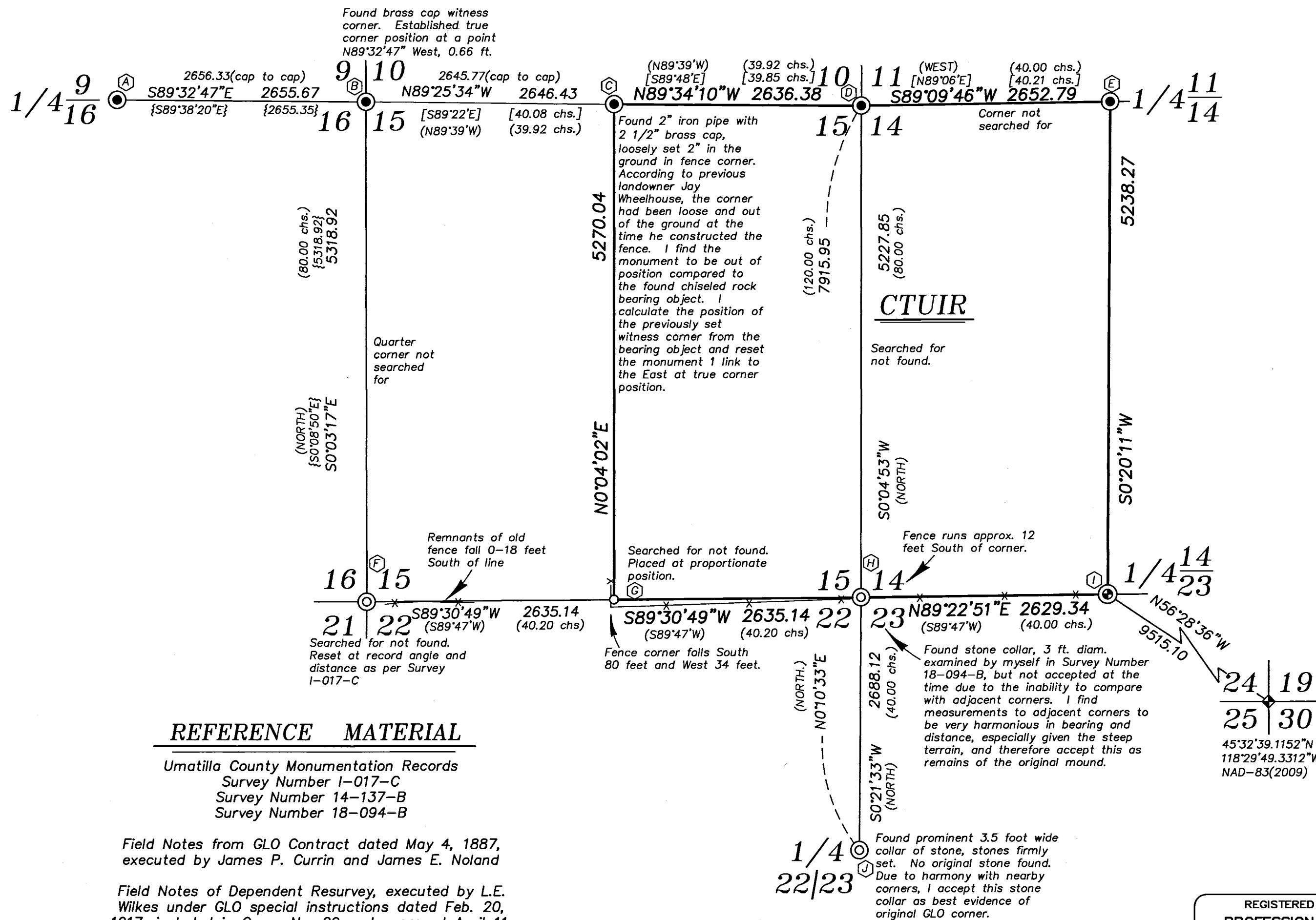
BASIS OF BEARING

True geodetic North at the Southeast corner of Section 24, Township 1 North, Range 34 East of the Willamette Meridian, as determined by GPS observation

SCALE: 1"=1000'

LEGEND

- Found 2" iron pipe with 2 1/2" brass cap, set by GLO Surveyor L.E. Wilkes, in dependent resurvey
- ⊙ Found 2 1/2" pipe with 3" aluminum cap, marked as per Umatilla County Monumentation Records, set by Survey Number 18-094-B
- ◇ Found 1 1/2" iron pipe with 2" brass cap, set by Survey Number M-045-C
- ⊙ Set 2 1/2" aluminum pipe with 3" aluminum cap, marked as per Umatilla County Monumentation Records, filed separately
- Set 5/8" Iron rebar with 2 1/2" aluminum cap, marked as per Umatilla County Monumentation Records, filed separately
- () Record measurement as per GLO Special Instructions dated May 4, 1887, executed by Noland and Currin
- [] Record measurement as per GLO Special Instructions dated Feb. 20 1917, executed by L.E. Wilkes
- { } Record measurement as per Survey Number I-017-C



REFERENCE MATERIAL

Umatilla County Monumentation Records
 Survey Number I-017-C
 Survey Number 14-137-B
 Survey Number 18-094-B

Field Notes from GLO Contract dated May 4, 1887, executed by James P. Currin and James E. Noland

Field Notes of Dependent Resurvey, executed by L.E. Wilkes under GLO special instructions dated Feb. 20, 1917, included in Group No. 29 and approved April 11, 1917

Field Notes of Dependent Resurvey, executed by Bryan S. Seibold, under BLM Special Instructions dated May 19, 1999, included under Group No. 1913 and Assignment Instruction dated May 19, 1999

Microfilm Document Number 2018-6800807

NARRATIVE

This survey was done at the request of Kelly George on behalf the Confederated Tribes of the Umatilla. Ms. George wanted to monument the South line of recently purchased property. The North line was surveyed and monumented by GLO surveyor L.E. Wilkes in the survey of the diminished Umatilla reservation. Portions of this line were retraced by BLM Surveyor Brian Siebold. I recover these monuments as shown with exception of the brass cap quarter corner between Section 10 and 15, originally a witness corner set by L.E. Wilkes. Previous landowner Jay Wheelhouse has mentioned that this corner was removed and lying horizontally at the time he constructed the fence. I find it upright, loosely set, in the fence corner at the time of this survey. Due to the likelihood that this monument has been disturbed, I check it against Wilkes' bearing object and find it to be out of position. I reset this corner at true corner position by first computing the witness corner position as per the Wilkes survey and moving it East 0.66 feet.

I make a diligent search for the quarter corner and section corner along the South line and only find a prominent collar of stone at the corner between sections 14, 15, 22 and 23. A East/West running fenceline runs South approx. 12 feet from this mound. Due to the likelihood of being a former rock jack, I continue my search to the South and to the West. The corner of Sections 15, 16, 21 and 22 was found by Dave Krumbain in Survey I-017-C, however, no remains of this corner could be found. I retrace said survey and finding the measurements harmonious between the quarter corner of Sections 9 and 16 and the NE corner of Section 16, I place the missing corner by record angle and distance. As I continue South, I find a prominent collar of stone at the quarter corner between Sections 22 and 23. Though a fenceline falls within the vicinity of this collar, it does not appear to run straight or otherwise imply that it was intended to represent an aliquot line. An inverse to the Northwest corner of Section 14 (nearest available corner at the time of discovery), I find the measurement to match GLO record very well. I therefore accept this collar as remains of the original monument.

Having corners in four directions from the stone collar at the SW corner of Section 14, I find the measurements to be very harmonious with the GLO record and therefore accept this as remains of the original GLO mound of stone. I find the quarter corner between Sections 15 and 22 to be lost and replace this at proportionate position as per BLM Manual of Instructions 2009..

I find no other unusual conditions with this survey.

REGISTERED
 PROFESSIONAL
 LAND SURVEYOR

OREGON
 JUNE 2, 2010
 JEFFREY S. HSU
 83571

Renewal Date: June 30, 2019

GEODETTIC COORDINATES - NAD-83 (2009)		
POINT	LATITUDE	LONGITUDE
A	45°34'22.8922"N	118°34'09.2376"W
B	45°34'22.7065"N	118°33'31.9044"W
C	45°34'22.4634"N	118°32'54.7203"W
D	45°34'22.2828"N	118°32'17.6676"W
E	45°34'22.6771"N	118°31'40.3874"W
F	45°33'30.2044"N	118°33'31.7848"W
G	45°33'30.4436"N	118°32'54.7596"W
H	45°33'30.6794"N	118°32'17.7343"W
I	45°33'30.9716"N	118°31'40.7912"W
J	45°33'04.1458"N	118°32'17.9517"W

Survey was performed with survey grade Leica GPS Real Time Kinematic receivers using radial single baseline survey method. Estimated positional accuracies are 8mm ± 1 PPM.

RECEIVED BY
 Umatilla County Surveyor
 Date: 5/21/19
 Rec'd By: CT
 No.: 19-053-6

BAGETT, GRIFFITH & BLACKMAN 2006 Adams Avenue, LaGrande, Oregon Map of Survey	
Situate in Sections 14, and 15, Township 1 North, Range 34 East of the Willamette Meridian UMATILLA COUNTY, OREGON	
SURVEYED FOR	Confederated Tribes of the Umatilla
SURVEYED BY	J. S. H.
Scale: 1" = 1000'	Drawn by: J. S. H. May 2019