

REGISTERED PROFESSIONAL LAND SURVEYOR
 OREGON
 JANUARY 23, 1990
 DALE L. HULT
 2427
 RENEWS 07/01/17

BOUNDARY SURVEY

LOCATED IN THE SE 1/4 OF SECTION 32 & THE SW 1/4 OF SECTION 33, OF T6N, R35E, W.M. UMATILLA COUNTY, OREGON
 DATE: FEBRUARY 28, 2017 SCALE 1" = 200'

CLIENT: COMMERCIAL DUE DILIGENCE SERVICES
Umatilla County
Surveyors & Planners, Inc.
 Surveying, Planning and Civil Engineering
 P.O. Box 955 Sandy, OR 97055
 Phone: (503) 668-3151
 Fax: (503) 668-4730
 Subject to General Conditions 2006

NARRATIVE

THE PURPOSE OF THIS SURVEY IS TO LOCATE THE BOUNDARIES AND MONUMENT THE CORNERS OF THAT CERTAIN REAL PROPERTY CONVEYED BY DEED RECORDED AS DOCUMENT NO. 1999-35330074, UMATILLA COUNTY DEED RECORDS.

THE BASIS OF BEARINGS BEING THE LINE SHOWN FROM THE FOUND MONUMENTS SHOWN PER RECORD (1).

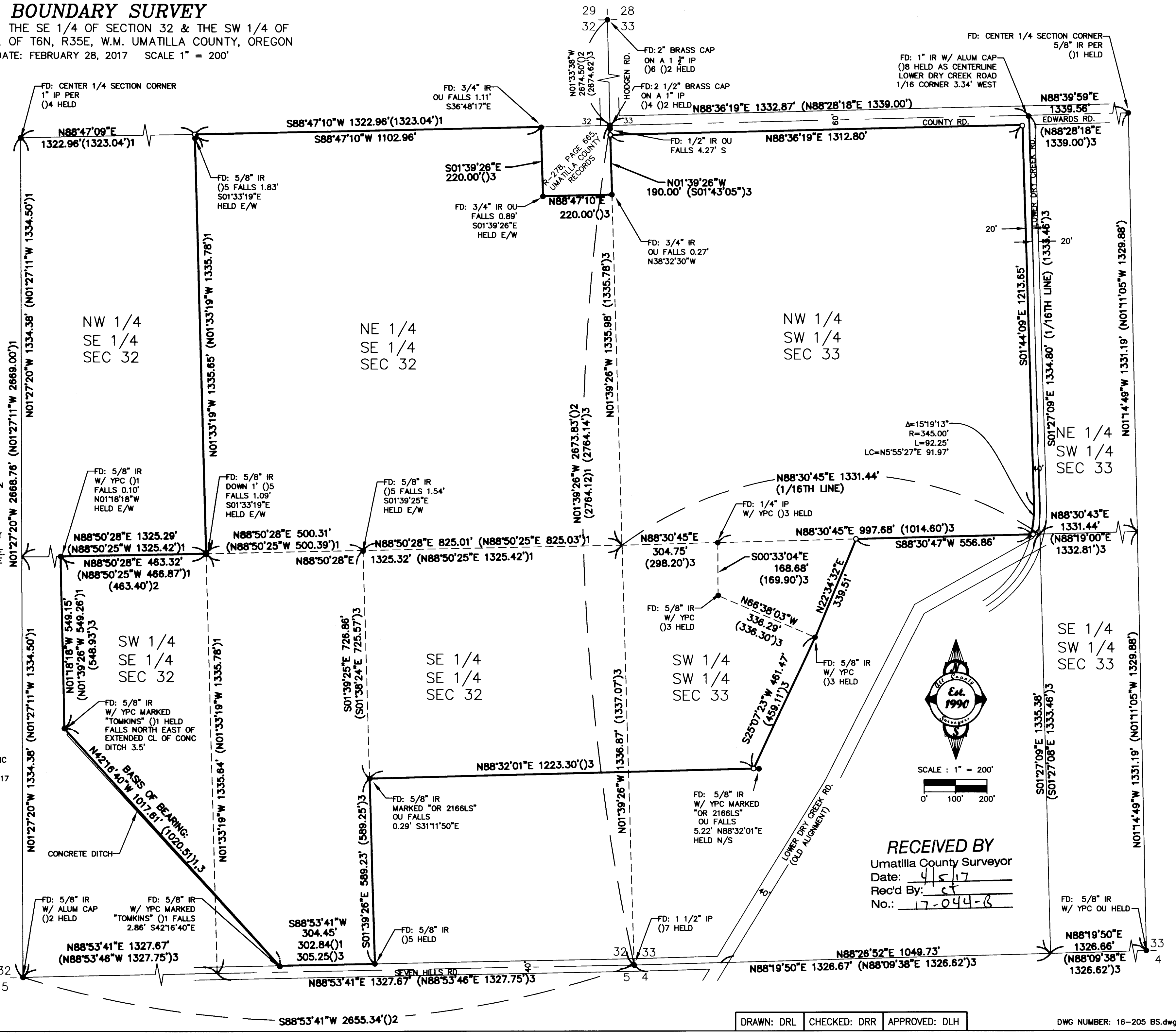
I TIED THE QUARTER AND SECTION CORNERS AS SHOWN I HELD ALL OF THEM AS FOUND. BEARING TREES NOR REFERENCES WERE TIED WITH THIS SURVEY, AND NO ATTEMPT WAS MADE TO VERIFY ORIGINAL GOVERNMENT RECORDS.

I HELD A CONVENTIONAL BREAKDOWN OF EACH QUARTER SECTION AS SHOWN. THESE LINES WERE EITHER MY CLIENTS BOUNDARY OR THE RIGHT OF WAY LINES FOLLOWING OFFSET TO THESE LINES WERE MONUMENTED. WHERE LINES DID NOT FOLLOW SECTION OR QUARTER SECTION LINES I HELD EXISTING MONUMENT. IN SOME CASES THESE BECAME CLOSING CORNERS HELD FOR LINE AND EXTENDED TO THE SECTION LINE AND QUARTER SECTION LINES. THE MONUMENTS WERE THE BEST EVIDENCE OF DEED LOCATION AND MATCH THE OCCUPATION FOUND IN THE FIELD. FARM AND OCCUPATION LINES MAY CHANGE OVER TIME BUT FOR THE MOST PART THIS SURVEY FITS THE CURRENT CONFIGURATION.

THERE IS A DITCH LINE CALLED FOR IN THE DEED WHICH IS MY BASIS OF BEARING LINE. THE MONUMENTS FIT WITH THE RECORD SURVEY BUT DO NOT FIT WITH THE CURRENT CONCRETE CHANNEL DITCH. THE MONUMENTS MAY HAVE FIT WITH AN HISTORIC DITCH BUT I COULD NOT DETERMINE. I THEREFOR SHOW A FALLING TO THE EXISTING DITCH LINE AT THE NORTHERLY MONUMENT. THE SOUTHERLY MONUMENT FITS WELL.

LEGEND

- FOUND MONUMENT, NO CAP UNLESS NOTED
- SET 5/8" BY 30" IRON ROD WITH YELLOW PLASTIC CAP MARKED "ACS&P 668-3151", ON 2-1-17
- ◊ SET 5/8" BY 30" IRON ROD WITH ALUMINUM PLASTIC CAP MARKED "ACS&P 668-3151", 21.67' WEST OF TRUE 1/16TH CORNER AND ON 1/16 LINE ON 2-1-17
- M/L INDICATES MORE OR LESS
- W/YPC INDICATES WITH YELLOW PLASTIC CAP
- OU INDICATES ORGIN UNKNOWN
- (M) INDICATES MEASURED VALUE
- IR INDICATES IRON ROD
- IP INDICATES IRON PIPE, INSIDE DIAMETER
- SN INDICATES SURVEY NUMBER, UMATILLA COUNTY SURVEY RECORDS
- (1) INDICATES RECORD OR CALCULATED VALUE PER SN 03-238-B,
- (2) INDICATES RECORD OR CALCULATED VALUE PER SN 03-023-C
- (3) INDICATES RECORD OR CALCULATED VALUE PER SN 99-066-B
- (4) INDICATES RECORD OR CALCULATED VALUE PER SN 1-089-AX
- (5) INDICATES RECORD OR CALCULATED VALUE PER SN Q-1200-B
- (6) INDICATES RECORD OR CALCULATED VALUE PER SN 96-02-B
- (7) INDICATES RECORD OR CALCULATED VALUE PER SN 91-081-B
- (8) INDICATES RECORD OR CALCULATED VALUE PER SN 03-043-C



Δ=15°19'13"
 R=345.00'
 L=92.25'
 LC=N5°55'27"E 91.97'



RECEIVED BY
 Umatilla County Surveyor
 Date: 4/5/17
 Rec'd By: ct
 No.: 17-044-B

DRAWN: DRL CHECKED: DRR APPROVED: DLH

DWG NUMBER: 16-205 BS.dwg