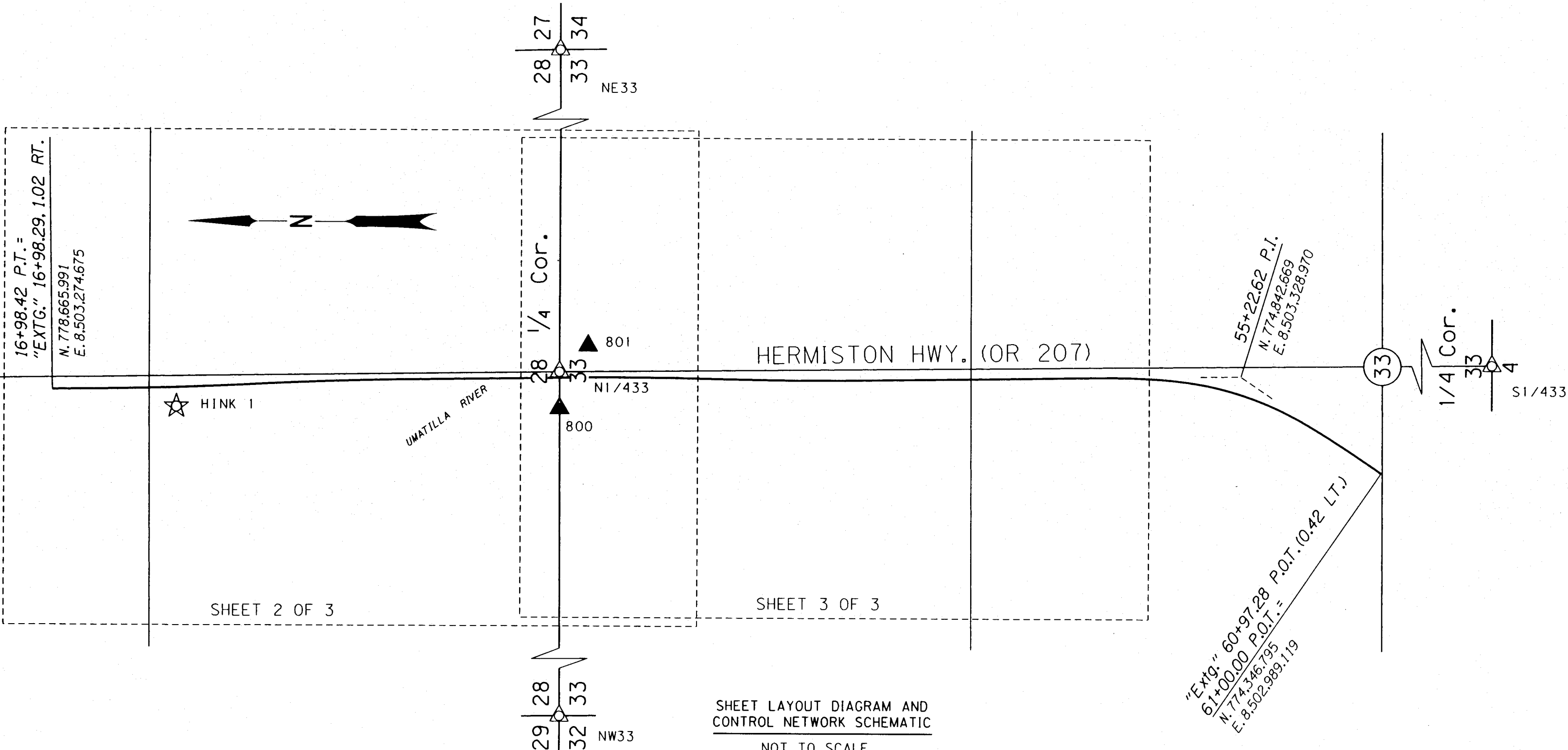


S 1/2, SEC. 28 & N 1/2, SEC. 33, T. 4 N., R. 28 E., W.M.

CENTER 1/4 Cor.
SECTION 28
C28



SHEET LAYOUT DIAGRAM AND CONTROL NETWORK SCHEMATIC
NOT TO SCALE

SURVEY NARRATIVE

THE PURPOSE OF THIS SURVEY IS TO MONUMENT THE NEWLY ACQUIRED RIGHT OF WAY (RW) FOR A PORTION OF THE HERMISTON HIGHWAY IN UMATILLA COUNTY, OREGON. THIS SURVEY IS BASED ON UMATILLA COUNTY SURVEY (CS) 13-517-B, FILED AUGUST 29, 2013. THIS SURVEY IS FOR THE OREGON DEPARTMENT OF TRANSPORTATION (ODOT) AND IS THE FINAL MONUMENTATION FOR THE FFO-OR207: UMATILLA RIVER (HINKLE) BR. NO. 02318A PROJECT.

THE HIGHWAY WAS RE-ALIGNED AS PART OF THE ABOVE STATED PROJECT AND RW WAS PURCHASED FROM THE NEW ALIGNMENT AS SHOWN BY ODOT DRAWING I1B-06-0029.

THE BASIS OF BEARING WAS ESTABLISHED BY GPS. CONTROL WAS ESTABLISHED USING AN OPUS SOLUTION AT POINT HINKLE.1. THIS SURVEY UTILIZES A LOCAL DATUM PLANE (LDP) WHICH IS RELATIVE TO THE OREGON COORDINATE SYSTEM (OCS) OF 1983 (CORS96, EPOCH 2002), NORTH ZONE, WITH RESPECT TO THE LOCAL LATITUDE AND GROUND ELEVATION. THE LDP COORDINATES DEFINE TRUE GROUND DISTANCES. TO CONVERT THE LDP COORDINATES, FOR THE CONTROL POINTS, TO THE OREGON COORDINATE SYSTEM OF 1983(CORS96, EPOCH 2002), NORTH ZONE, MULTIPLY THE LDP COORDINATES BY 0.99992798.

THE MONUMENTS FOR THIS PROJECT WERE SET ON APRIL 7, 2016 AND APRIL 8, 2016. THE EQUIPMENT USED WAS A LIECA GS14 BASE STATION WITH A LIECA GS14 ROVER.

FD. = FOUND
BR. = BRASS
MKD. = MARKED
W/ = WITH

SET/RECOVERED NETWORK CONTROL MONUMENTS

PT. NO.	LDP NORTHING	LDP EASTING	DESCRIPTION & REFERENCE DOCUMENTS
C28	779,675.66	8,503,300.17	FD. 2 1/2" BR. DISK MKD. "T4N, R28E, C1/4, S 28, 1987, PLS 699"
NE33	777,031.97	8,506,008.56	FD. 2 3/8" BR. CAP MKD. "T4N, R28E, 28, 27, 33, 34, 933, 1976"
N1/4S33	777,034.50	8,503,335.97	FD. TRUCK AXLE, RESET WITH 1 1/4" COPPER DISK IN IMPACT PANEL OF BRIDGE
NW33	777,023.98	8,500,671.96	FD. 2 3/8" BR. CAP MKD. "T4N, R28E, 29, 28, 32, 33, 1991, LS 951"
S1/4S33	771,747.42	8,503,392.98	FD. 2 3/8" BR. CAP MKD. "T4N, R28E, 1/4, S 33, S 4, T3N, R28E, 1980, PLS 933"
*HINK 1	778,266.03	8,503,220.56	FD. 5/8" SMOOTH IRON ROD WITH 1 1/2" ALUMINUM CAP MKD. "ODOT" W/CARSONITE POST
800	777,033.89	8,503,217.58	SET 3/8" IRON ROD WITH 1 1/2" ALUMINUM CAP MKD. "ODOT" W/CARSONITE POST
801	776,942.50	8,503,420.66	SET 5/8" IRON ROD WITH 1 1/2" ALUMINUM CAP

* HINK_1 778,265.9781 8,503,220.4550 ON COUNTY SURVEY 13-517-B

LEGEND	
☆	FOUND MONUMENT USED AS GPS POINT
⊙	FOUND MONUMENT USED AS NETWORK POINT
▲	SET NETWORK POINT

REFERENCE DOCUMENTS:

- UMATILLA COUNTY SURVEY H-26-AX
- UMATILLA COUNTY SURVEY M-79-C
- UMATILLA COUNTY SURVEY 83-71-1
- UMATILLA COUNTY SURVEY 88-15-C
- UMATILLA COUNTY SURVEY 92-45-C
- UMATILLA COUNTY SURVEY 93-28-C
- UMATILLA COUNTY SURVEY 06-619-B (PP 2006-31)
- UMATILLA COUNTY SURVEY 13-517-B
- ODOT DRAWING I1B-06-0029

- SHEET 1 OF 3
SHEET LAYOUT
PERMANENT NETWORK
SURVEY NARRATIVE
REFERENCES
- SHEET 2 OF 3
RIGHT OF WAY BOUNDARY
SET RIGHT OF WAY MONUMENTS
FOUND MONUMENTS
- SHEET 2 OF 3
RIGHT OF WAY BOUNDARY
SET RIGHT OF WAY MONUMENTS
FOUND MONUMENTS

RECEIVED BY
Umatilla County Surveyor
Date: 7/25/16
Rec'd By: CS
No.: 16-079-6

REGISTERED PROFESSIONAL LAND SURVEYOR

Robert E. Butler

OREGON
July 25, 1995
ROBERT ERICH BUTLER
2733

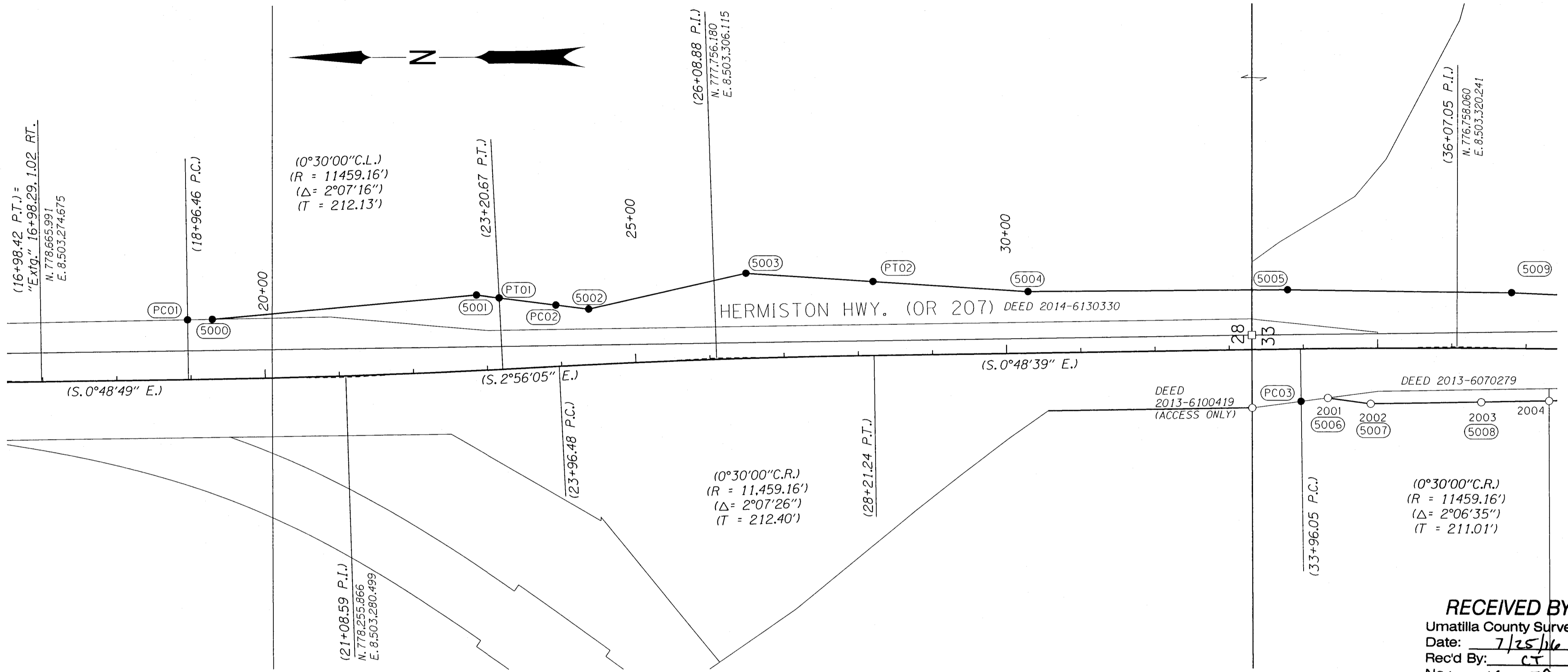
EXPIRES: 12/31/2017

OREGON DEPARTMENT OF TRANSPORTATION
RIGHT OF WAY BOUNDARY MONUMENTATION MAP
FFO-OR207: UMATILLA RIVER BRIDGE
(HINKLE) BRIDGE NO. 02318A
HERMISTON HIGHWAY (HWY NO. 333)
UMATILLA COUNTY

ODOT REGION 5
3012 ISLAND AVE.
LA GRANDE, OR. 97850

MAY 24, 2016
NOT TO SCALE
SHEET 1 OF 3

S 1/2, SEC. 28 & N 1/2, SEC. 33, T. 4 N., R. 28 E., W.M.



RECEIVED BY
 Umatilla County Surveyor
 Date: 7/25/16
 Rec'd By: CT
 No.: 16-079-B

SET MONUMENT LIST

PT. NO.	LDP NORTHING	LDP EASTING	STATION	OFFSET	DESCRIPTION & REFERENCE DOCUMENTS
PC01	778,469.12	8,503,358.45	18+96.46	80.97 LT.	SET 5/8"x30" IRON ROD W/1 1/2" ALUMINUM CAP MKD. "ODOT, PLS 2733"
5000	778,435.83	8,503,359.09	19+30.00	81.09 LT.	SET 5/8"x30" IRON ROD W/1 1/2" ALUMINUM CAP MKD. "ODOT, PLS 2733"
5001	778,079.59	8,503,391.71	22+90.00	102.00 LT.	SET 5/8"x30" IRON ROD W/1 1/2" ALUMINUM CAP MKD. "ODOT, PLS 2733"
PT01	778,048.96	8,503,387.78	23+20.67	96.55 LT.	SET 5/8"x30" IRON ROD W/1 1/2" ALUMINUM CAP MKD. "ODOT, PLS 2733"
PC02	777,972.55	8,503,377.97	23+96.48	82.84 LT.	SET 5/8"x30" IRON ROD W/1 1/2" ALUMINUM CAP MKD. "ODOT, PLS 2733"
5002	777,928.39	8,503,372.30	24+40.00	75.00 LT.	SET 5/8"x30" IRON ROD W/1 1/2" ALUMINUM CAP MKD. "ODOT, PLS 2733"
5003	777,716.32	8,503,420.43	26+52.00	115.00 LT.	SET 5/8"x30" IRON ROD W/1 1/2" ALUMINUM CAP MKD. "ODOT, PLS 2733"
PT02	777,545.21	8,503,409.01	28+21.24	99.90 LT.	SET 5/8"x30" IRON ROD W/1 1/2" ALUMINUM CAP MKD. "ODOT, PLS 2733"
5004	777,336.23	8,503,395.07	30+30.00	83.00 LT.	SET 5/8"x30" IRON ROD W/1 1/2" ALUMINUM CAP MKD. "ODOT, PLS 2733"
5005	776,986.22	8,503,397.02	33+80.00	80.00 LT.	SET 5/8"x30" IRON ROD W/1 1/2" ALUMINUM CAP MKD. "ODOT, PLS 2733"
PC03	776,968.04	8,503,246.36	33+96.05	70.90 RT.	SET 5/8"x30" IRON ROD W/1 1/2" ALUMINUM CAP MKD. "ODOT, PLS 2733"
5006	776,932.36	8,503,251.04	34+32.00	66.67 RT.	CALCULATED POSITION, NOTHING SET, SEE RECOVERED MONUMENT 2001
5007	776,874.65	8,503,243.20	34+90.00	75.00 RT.	CALCULATED POSITION, NOTHING SET, SEE RECOVERED MONUMENT 2002
5008	776,725.62	8,503,245.11	36+40.00	73.00 RT.	CALCULATED POSITION, NOTHING SET, SEE RECOVERED MONUMENT 2003
5009	776,684.30	8,503,392.75	36+80.00	75.00 LT.	SET 5/8"x30" IRON ROD W/1 1/2" ALUM. CAP MKD. "ODOT, PLS 2733"
N/433	777,034.49	8,503,335.97	33+30.87	19.64 LT.	FD. TRUCK AXLE, REPLACE WITH 1/4" COPPER DISK IN BRIDGE IMPACT PANEL

FOUND MONUMENT LIST

PT. NO.	LDP NORTHING	LDP EASTING	STATION	OFFSET	DESCRIPTION & REFERENCE DOCUMENTS
2000	777,033.96	8,503,237.70	33+30.01	78.63	FD. 5/8" IRON ROD W/YPC MKD. PLS, LS48509
2001	776,932.06	8,503,251.01	34+32.30	66.70	FD. 5/8" IRON ROD W/YPC MKD. PLS, LS48509; 0.30' S., 0.03' W. OF CALCULATED POSITION
2002	776,874.35	8,503,243.19	34+90.30	75.01	FD. 5/8" IRON ROD W/YPC MKD. PLS, LS48509; 0.30' S., 0.01' W. OF CALCULATED POSITION
2003	776,725.29	8,503,245.07	36+40.33	73.04	FD. 5/8" IRON ROD W/YPC MKD. PLS, LS48509; 0.33' S., 0.04' W. OF CALCULATED POSITION
2004	776,633.99	8,503,246.63	37+32.19	70.46	FD. 5/8" IRON ROD W/YPC MKD. PLS, LS48509

FD. = FOUND
 BR. = BRASS
 MKD. = MARKED
 W/ = WITH

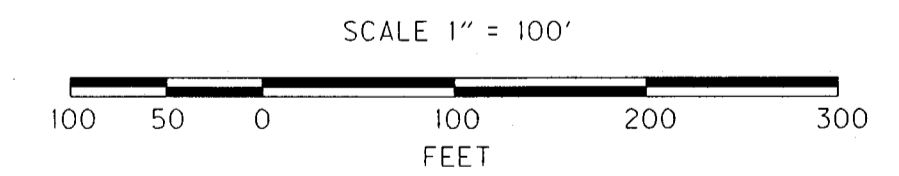
LEGEND

- () RECORD DATA AS PER ODOT DRAWING IIB-06-0029
- (5000) RIGHT-OF-WAY POINT NUMBER
- SET 5/8" x 30" IRON ROD W/1 1/2" ALUM. CAP
- SET 1/4" COPPER DISK
- FOUND MONUMENT AS NOTED
- EXISTING RIGHT-OF-WAY OR PROPERTY LINE
- NEW RIGHT-OF-WAY
- SECTION LINE
- 1/4 SECTION LINE
- 1/16 SECTION LINE


FD. = FOUND
 MKD. = MARKED
 W/YPC = WITH YELLOW PLASTIC CAP

REGISTERED PROFESSIONAL LAND SURVEYOR

Robert E. Butler
 OREGON
 July 25, 1995
 ROBERT ERICH BUTLER
 2733
 EXPIRES: 12/31/2017



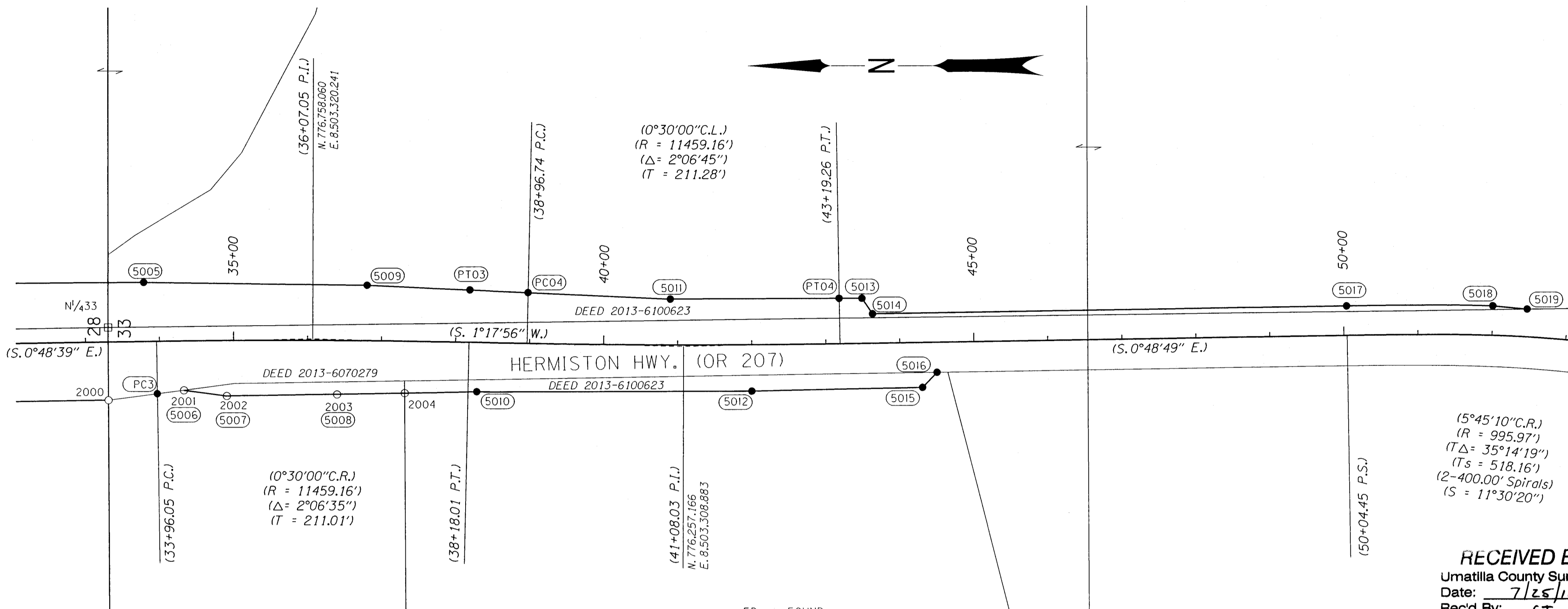
OREGON DEPARTMENT OF TRANSPORTATION
 RIGHT OF WAY BOUNDARY MONUMENTATION MAP
 FFO-OR207: UMATILLA RIVER BRIDGE
 (HINKLE) BRIDGE NO. 02318A
 HERMISTON HIGHWAY (HWY NO. 333)
 UMATILLA COUNTY



ODOT REGION 5
 3012 ISLAND AVE.
 LA GRANDE, OR. 97850

MAY 24, 2016
 1" = 100'
 SHEET 2 OF 3

S¹/₂, SEC. 28 & N¹/₂, SEC. 33, T. 4 N., R. 28 E., W.M.



FD. = FOUND
BR. = BRASS
MKD. = MARKED
W/ = WITH

(5°45'10\"C.R.)
(R = 995.97')
(TΔ = 35°14'19\"")
(Ts = 518.16')
(2-400.00' Spirals)
(S = 11°30'20\"")

RECEIVED BY
Umatilla County Surveyor
Date: 7/25/16
Rec'd By: CT
No.: 16-079-B

SET MONUMENT LIST

PT. NO.	LDP NORTHING	LDP EASTING	STATION	OFFSET	DESCRIPTION & REFERENCE DOCUMENTS
N ¹ / ₄ 33	777,034.49	8,503,335.97	33+30.87	19.64 LT.	FD. TRUCK AXLE, REPLACE WITH 1/4\" COPPER DISK IN BRIDGE IMPACT PANEL
PC03	776,968.04	8,503,246.36	33+96.05	70.90 RT.	SET 5/8\"x30\" IRON ROD W/1/2\" ALUMINUM CAP MKD. \"ODOT, PLS 2733\"
5006	776,932.36	8,503,251.04	34+32.00	66.67 RT.	CALCULATED POSITION, NOTHING SET, SEE RECOVERED MONUMENT 2001
5007	776,874.65	8,503,243.20	34+90.00	75.00 RT.	CALCULATED POSITION, NOTHING SET, SEE RECOVERED MONUMENT 2002
5008	776,725.62	8,503,245.11	36+40.00	73.00 RT.	CALCULATED POSITION, NOTHING SET, SEE RECOVERED MONUMENT 2003
5009	776,684.30	8,503,392.75	36+80.00	75.00 LT.	SET 5/8\"x30\" IRON ROD W/1/2\" ALUMINUM CAP MKD. \"ODOT, PLS 2733\"
PT03	776,545.51	8,503,386.03	38+18.01	70.59 LT.	SET 5/8\"x30\" IRON ROD W/1/2\" ALUMINUM CAP MKD. \"ODOT, PLS 2733\"
5010	776,536.64	8,503,248.20	38+30.00	67.00 RT.	SET 5/8\"x30\" IRON ROD W/1/2\" ALUMINUM CAP MKD. \"ODOT, PLS 2733\"
PC04	776,466.84	8,503,382.22	38+96.74	68.57 LT.	SET 5/8\"x30\" IRON ROD W/1/2\" ALUMINUM CAP MKD. \"ODOT, PLS 2733\"
5011	776,274.80	8,503,372.92	40+90.00	62.00 LT.	SET 5/8\"x30\" IRON ROD W/1/2\" ALUMINUM CAP MKD. \"ODOT, PLS 2733\"
5012	776,164.92	8,503,247.81	42+00.00	63.00 RT.	SET 5/8\"x30\" IRON ROD W/1/2\" ALUMINUM CAP MKD. \"ODOT, PLS 2733\"
PT04	776,046.77	8,503,373.27	43+19.26	61.39 LT.	SET 5/8\"x30\" IRON ROD W/1/2\" ALUMINUM CAP MKD. \"ODOT, PLS 2733\"
5013	776,016.04	8,503,373.31	43+50.00	61.00 LT.	SET 5/8\"x30\" IRON ROD W/1/2\" ALUMINUM CAP MKD. \"ODOT, PLS 2733\"
5014	776,001.74	8,503,352.51	43+64.00	40.00 LT.	SET 5/8\"x30\" IRON ROD W/1/2\" ALUMINUM CAP MKD. \"ODOT, PLS 2733\"
5015	775,934.31	8,503,252.46	44+30.00	61.00 RT.	SET 5/8\"x30\" IRON ROD W/1/2\" ALUMINUM CAP MKD. \"ODOT, PLS 2733\"
5016	775,914.60	8,503,272.81	44+50.00	40.93 RT.	SET 5/8\"x30\" IRON ROD W/1/2\" ALUMINUM CAP MKD. \"ODOT, PLS 2733\"
5017	775,361.35	8,503,361.61	50+04.45	40.00 LT.	SET 5/8\"x30\" IRON ROD W/1/2\" ALUMINUM CAP MKD. \"ODOT, PLS 2733\"
5018	775,163.90	8,503,361.24	52+00.00	40.00 LT.	SET 5/8\"x30\" IRON ROD W/1/2\" ALUMINUM CAP MKD. \"ODOT, PLS 2733\"
5019	775,117.56	8,503,356.64	52+45.54	37.53 LT.	SET 5/8\"x30\" IRON ROD W/1/2\" ALUMINUM CAP MKD. \"ODOT, PLS 2733\"

FOUND MONUMENT LIST

PT. NO.	LDP NORTHING	LDP EASTING	STATION	OFFSET	DESCRIPTION & REFERENCE DOCUMENTS
2000	777,033.96	8,503,237.70	33+30.01	78.63	FD. 5*8\" IRON ROD W/YPC MKD. PLS, LS48509
2001	776,932.06	8,503,251.01	34+32.30	66.70	FD. 5*8\" IRON ROD W/YPC MKD. PLS, LS48509; 0.30' S., 0.03' W. OF CALCULATED POSITION
2002	776,874.35	8,503,243.19	34+90.30	75.01	FD. 5*8\" IRON ROD W/YPC MKD. PLS, LS48509; 0.30' S., 0.01' W. OF CALCULATED POSITION
2003	776,725.29	8,503,245.07	36+40.33	73.04	FD. 5*8\" IRON ROD W/YPC MKD. PLS, LS48509; 0.33' S., 0.04' W. OF CALCULATED POSITION
2004	776,633.99	8,503,246.63	37+32.19	70.46	FD. 5*8\" IRON ROD W/YPC MKD. PLS, LS48509

LEGEND

- () RECORD DATA AS PER ODOT DRAWING 11B-06-0029
- (5000) RIGHT-OF-WAY POINT NUMBER
- SET 5/8\" x 30\" IRON ROD W/1/2\" ALUM. CAP
- SET 1/4\" COPPER DISK
- FOUND MONUMENT AS NOTED
- EXISTING RIGHT-OF-WAY OR PROPERTY LINE
- NEW RIGHT-OF-WAY
- SECTION LINE
- 1/4 SECTION LINE
- 1/6 SECTION LINE

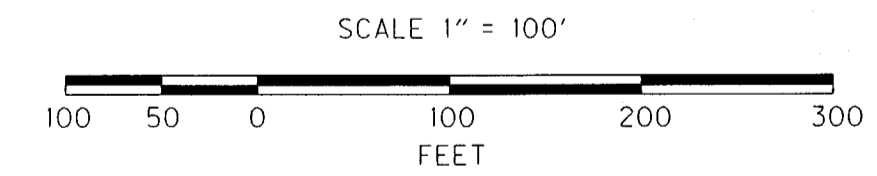
FD. = FOUND
MKD. = MARKED
W/YPC = WITH YELLOW PLASTIC CAP

REGISTERED PROFESSIONAL LAND SURVEYOR

Robert E. Butler

OREGON
July 25, 1995
ROBERT ERICH BUTLER
2733

EXPIRES: 12/31/2017



OREGON DEPARTMENT OF TRANSPORTATION
RIGHT OF WAY BOUNDARY MONUMENTATION MAP
FFO-OR207: UMATILLA RIVER BRIDGE
(HINKLE) BRIDGE NO. 02318A
HERMISTON HIGHWAY (HWY NO. 333)
UMATILLA COUNTY

ODOT REGION 5
3012 ISLAND AVE.
LA GRANDE, OR. 97850

MAY 24, 2016
1\" = 100\"
SHEET 3 OF 3