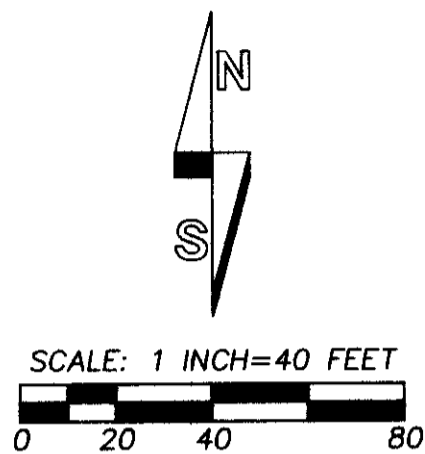
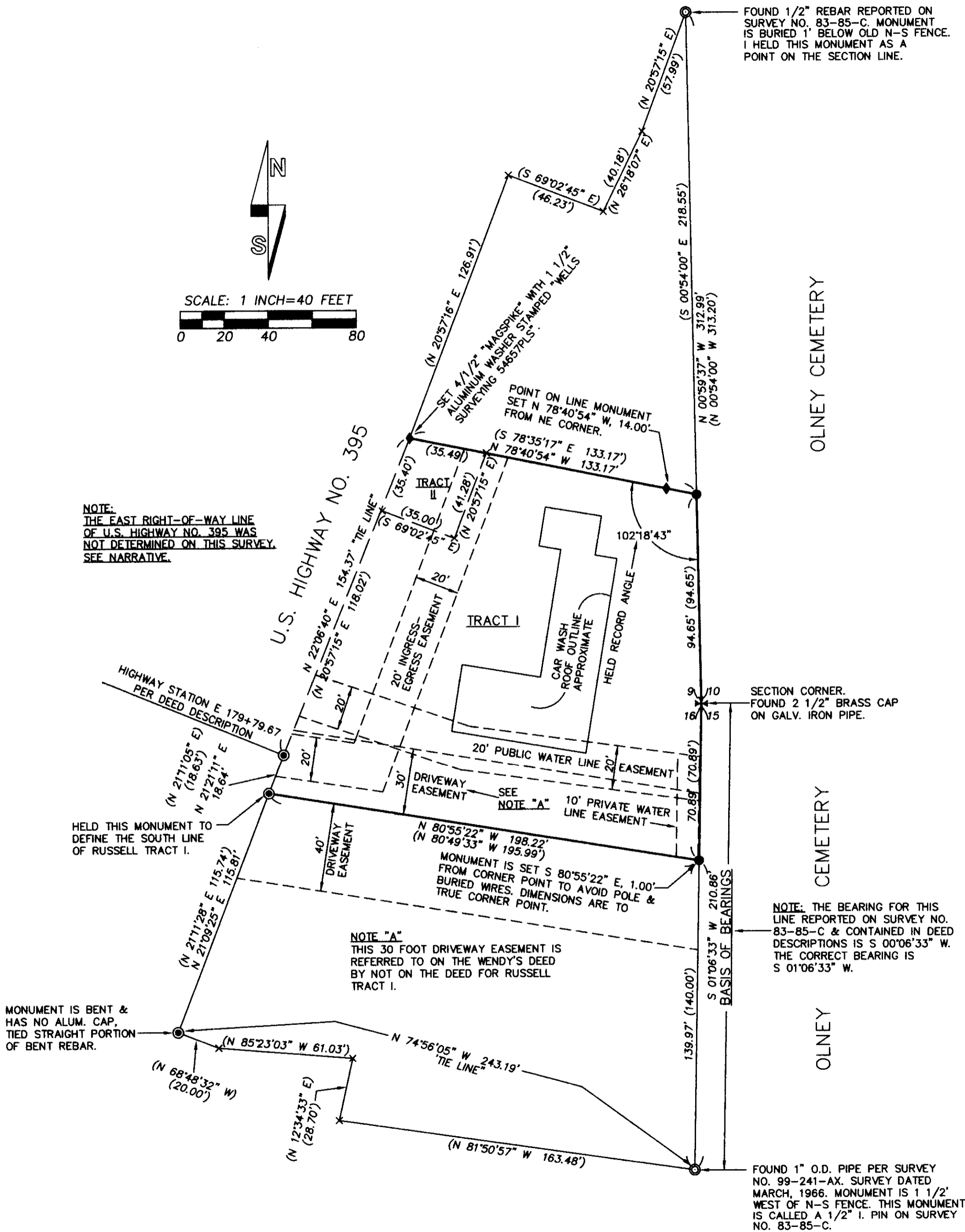


RECORD OF SURVEY



NOTE:
THE EAST RIGHT-OF-WAY LINE
OF U.S. HIGHWAY NO. 395 WAS
NOT DETERMINED ON THIS SURVEY.
SEE NARRATIVE.

FOUND 1/2" REBAR REPORTED ON
SURVEY NO. 83-85-C. MONUMENT
IS BURIED 1' BELOW OLD N-S FENCE.
I HELD THIS MONUMENT AS A
POINT ON THE SECTION LINE.



MONUMENT IS BENT &
HAS NO ALUM. CAP.
TIED STRAIGHT PORTION
OF BENT REBAR.

NOTE "A"
THIS 30 FOOT DRIVEWAY EASEMENT IS
REFERRED TO ON THE WENDY'S DEED
BY NOT ON THE DEED FOR RUSSELL
TRACT I.

MONUMENT IS SET S 80°55'22" E, 1.00'
FROM CORNER POINT TO AVOID POLE &
BURIED WIRES. DIMENSIONS ARE TO
TRUE CORNER POINT.

FOUND 1" O.D. PIPE PER SURVEY
NO. 99-241-AX. SURVEY DATED
MARCH, 1966. MONUMENT IS 1 1/2'
WEST OF N-S FENCE. THIS MONUMENT
IS CALLED A 1/2" I. PIN ON SURVEY
NO. 83-85-C.

LEGEND

- - SET 5/8" BY 24" REBAR WITH RED PLASTIC CAP MARKED "OR PLS 1106 WA PLS 17372".
- ◆ - SET RAILROAD SPIKE STAMPED "1106" UNLESS OTHERWISE NOTED.
- ⊙ - FOUND 5/8" REBAR MONUMENT FROM SURVEY NO. 83-85-C, WITH UNREADABLE 1 1/4" ALUMINUM CAP UNLESS OTHERWISE NOTED.
- ⊙ - OTHER MONUMENT FOUND AS NOTED.
- x - CALCULATED POINT ONLY, NOT SET OR FOUND.
- (XOX) - RECORD DIMENSION PER SURVEY NO. 83-85-C AND DEED DESCRIPTIONS.
- - INDICATES EASEMENT LINE. THE EASEMENTS WERE NOT SURVEYED AND ARE SHOWN FOR INFORMATION ONLY.

REFERENCE SURVEYS:

1. SURVEY NO. 83-85-C, KRUMBEIN, 1983.
2. SURVEY NO. 99-241-AX, WALLULIS, 1966.
3. PLAT OF BARNUMS ADDITION, 1958.
4. SURVEY NO. Q-456-C, KRUMBEIN, 1979.
5. SURVEY NO. N-095-C, KRUMBEIN, 1977.
6. SURVEY NO. 85-153-B, KRUMBEIN, 1985.
7. 1974 SURVEY FOR ROBERT CONNELL, BY WAYNE HARRIS COMPANY AND STAMPED BY DAVE KRUMBEIN.

NARRATIVE

THIS SURVEY WAS MADE FOR THE PURPOSE OF DEFINING THE LOCATION OF THE NORTH, SOUTH AND EAST LINES OF THOSE TRACTS OF LAND DESCRIBED IN WARRANTY DEED RECORDED AS INSTRUMENT NO. 2000-3760770, UMATILLA COUNTY OFFICE OF RECORDS.

THE REFERENCE SURVEYS USED ARE NOTED ON THIS RECORD OF SURVEY. TO DETERMINE THE EAST LINE OF THE TRACTS, WHICH IS ALONG THE WEST LINES OF SECTIONS 9 AND 16, I SEARCHED FOR RECORD MONUMENTS SHOWN ON THE REFERENCE SURVEYS. I RECOVERED THE SECTION CORNER, THE 1/2 INCH REBAR NORTH OF THE SECTION CORNER AND A 1 INCH O.D. PIPE SOUTH OF THE SECTION CORNER. THE 1/2 INCH REBAR NORTH OF THE SECTION CORNER WAS ALSO FOUND AND HELD ON SURVEY NO. 83-85-C. THE ONE INCH PIPE WAS ESTABLISHED IN 1966 ON SURVEY NO. 99-241-AX. THE PIPE WAS RECOVERED ON SURVEY NO. 83-85-C BUT THE MONUMENT WAS CALLED A 1/2 INCH I. PIN, THE BEARING BETWEEN THE SECTION CORNER AND THE MONUMENT WAS REPORTED AS SOUTH 00°06'33" WEST. CONSULTATION OF RECORD SURVEYS INDICATES THE CORRECT BEARING IS, IN FACT, SOUTH 01°06' 33" WEST.

DEED DESCRIPTIONS FOR TRACTS RECORDED IN INSTRUMENT NO. 2000-3760770 AND IN INSTRUMENT NO. 2012-2900255, OFFICE OF RECORDS WERE CALCULATED USING THE INCORRECT BEARING OF SOUTH 00°06'33" WEST SOUTH OF THE SECTION CORNER. THE SUBJECT DEED DESCRIPTIONS CLOSE MATHEMATICALLY ON PAPER BUT THE EAST LINE IS EXACTLY ONE DEGREE OFF IN BEARING SOUTH OF THE SECTION CORNER. THREE 5/8 INCH REBAR MONUMENTS WERE FOUND NEAR THE EAST RIGHT-OF-WAY LINE OF U.S. HIGHWAY NO. 395. THESE MONUMENTS ARE 2 TO 3 PLUS FEET TOO FAR WEST BECAUSE OF THE 1 DEGREE BEARING ERROR. I DID NOT ATTEMPT TO DETERMINE THE EAST RIGHT-OF-WAY LINE OF U.S. HIGHWAY NO. 395.

TO DETERMINE THE SOUTH LINE OF TRACT I DESCRIBED IN INSTRUMENT NO. 2000-3760770, I ESTABLISHED A POINT THE RECORD DISTANCE OF 70.89 FEET SOUTH, ALONG THE SECTION LINE, FROM THE SECTION CORNER. I HELD THE 5/8 INCH REBAR MONUMENT ESTABLISHED ON SURVEY NO. 83-85-C TO DEFINE THE ALIGNMENT OF SAID SOUTH LINE.

TO DETERMINE THE NORTH LINE OF TRACTS I AND II DESCRIBED IN INSTRUMENT NO. 2000-3760770, I ESTABLISHED A POINT THE RECORD DISTANCE OF 94.65 FEET NORTH, ALONG THE SECTION LINE, FROM THE SECTION CORNER. TO DETERMINE ALIGNMENT OF SAID NORTH LINE, I HELD THE RECORD ANGLE FROM THE SECTION LINE REPORTED ON SURVEY NO. 83-85-C.

THE DEED DESCRIPTIONS CONTAINED SEVERAL EASEMENT DESCRIPTIONS. THOSE EASEMENTS ARE SHOWN ON THIS RECORD OF SURVEY. THE 30 FOOT DRIVEWAY EASEMENT ALONG THE SOUTH LINE OF TRACT I IS PLOTTED FROM THE DESCRIPTION CONTAINED IN INSTRUMENT NO. 2012-5900255. A TITLE COMMITMENT OR TITLE POLICY WAS NOT CONSULTED FOR THIS SURVEY. OTHER EASEMENTS OR ENCUMBRANCES MAY EXIST.

THIS SURVEY WAS MADE BY A TWO PERSON CREW USING A LEICA TCR 803 THREE SECOND TOTAL STATION BY CLOSED TRAVERSE AND RADIAL TIES. CONTROL MONUMENT TIES AND MONUMENTS SET BY RADIAL METHODS WERE VERIFIED BY REDUNDANT OBSERVATIONS.

RECEIVED BY

Umatilla County Surveyor
Date: 9/10/12
Rec'd By: S. Res
No.: 12-127-B

REGISTERED
PROFESSIONAL
LAND SURVEYOR

William R. Wells

OREGON
JULY 22, 1977
WILLIAM R. WELLS
1106
RENEWS 6/30/14

WELLS SURVEYING
1 SW NYE AVENUE, SUITE B
P.O. BOX 1696
PENDLETON, OR 97801
PHONE: (541) 276-6362

DATE: 08/12 DR. BY: WRW
CK. BY: WRW NO: 12-1397

PROJECT: \RUSSELL-DALE
PARTIAL BOUNDARY SURVEY FOR:
DALE BAKER &
DON RUSSELL
OF LANDS LOCATED IN THE SE1/4
OF SECTION 9 AND NE1/4 OF
SECTION 16, T2N., R32E., W.M.,
CITY OF PENDLETON,
UMATILLA COUNTY, OREGON.