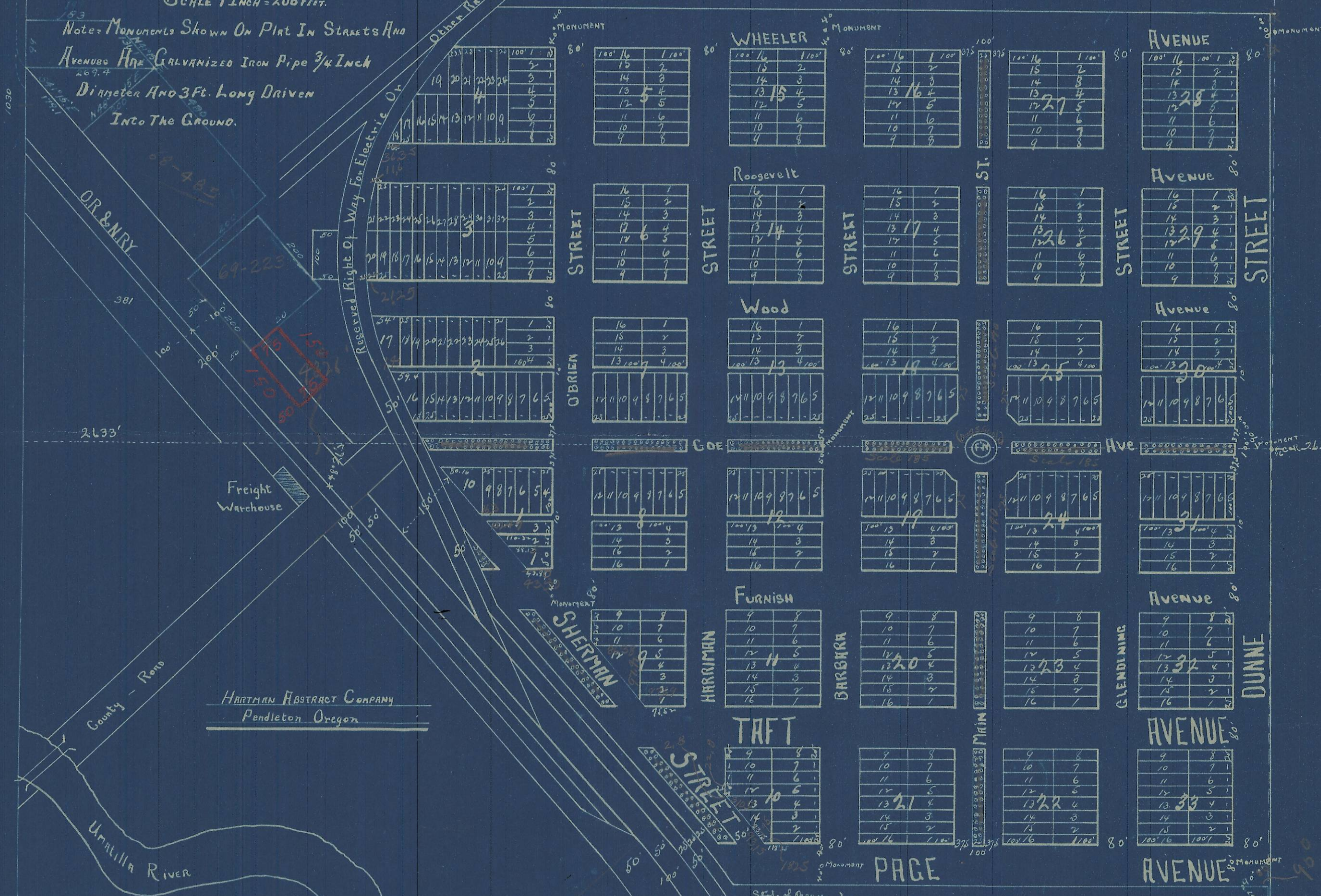


PLAT OF THE TOWN OF STANFIELD

LOCATED IN SECTION 32 T 4 NR 29 E W. M. UMATILLA COUNTY, OREGON.

SCALE 1 INCH = 200 FEET.

NOTE: MONUMENTS SHOWN ON PLAT IN STREETS AND AVENUES ARE GALVANIZED IRON PIPE 3/4 INCH DIAMETER AND 3 FT. LONG DRIVEN INTO THE GROUND.



Approved April 23, 1909

C.P. Strain

County Assessor

Filed for Record April 23, 1909 At 10 o'clock A.M.

Plat Book 3 PAGE 30 = Fred W. Hendley
Recorder of Conveyances

State of Oregon } ss
County of Umatilla }
I, Frank Saling, County Clerk and ex. officio clerk of the County of Umatilla, State of Oregon, do hereby certify that the within Plat has been approved by the County Court.
In testimony whereof I have hereunto set my hand and attached the seal of said Court this 22nd day of April 1909.

Frank Saling, clerk
By R. J. Brown, Deputy

11-178-B
(4N29 32)