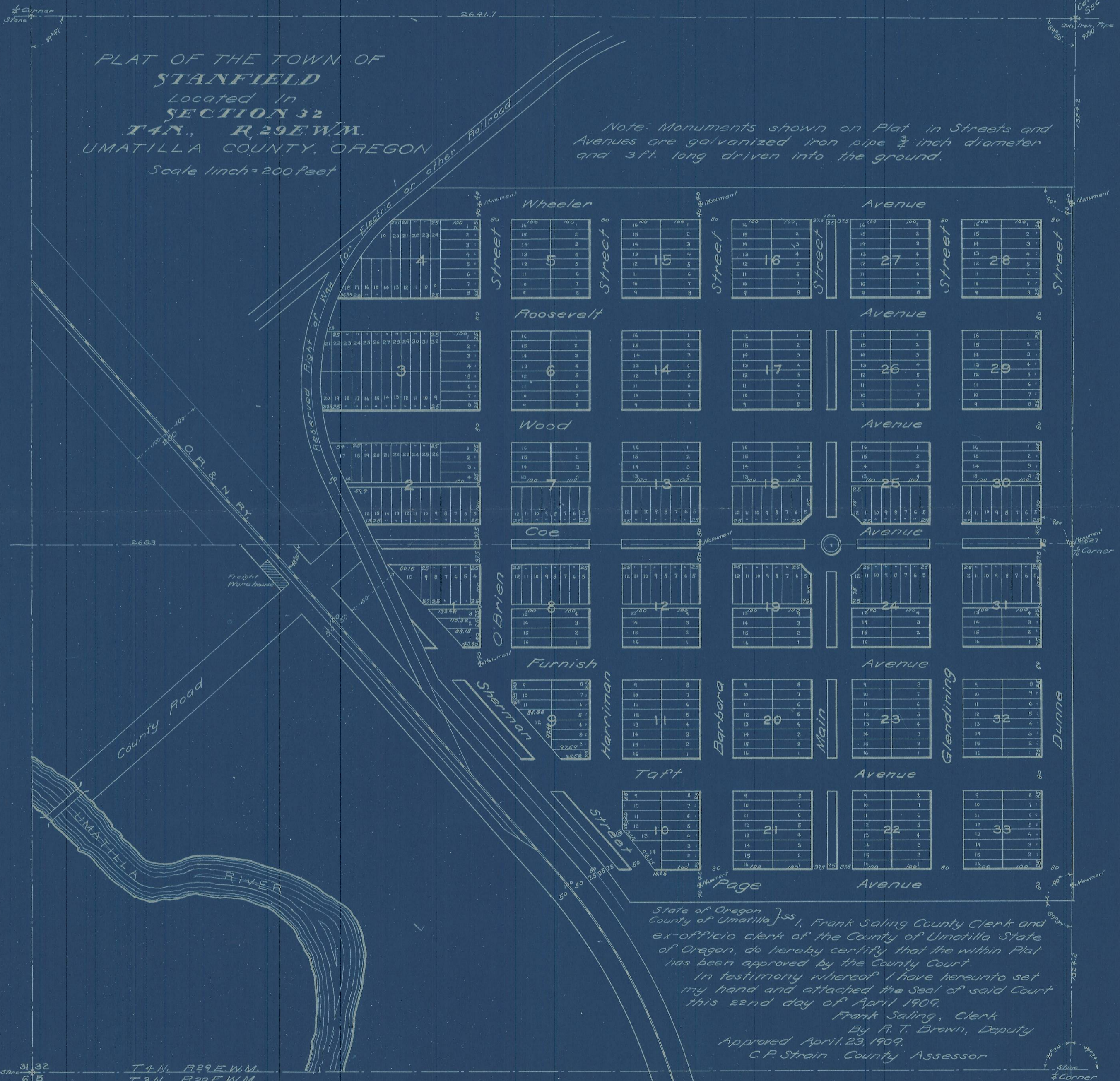


PLAT OF THE TOWN OF
STANFIELD
 Located In
SECTION 32
T4N., R29E.W.M.
 UMATILLA COUNTY, OREGON
 Scale 1inch=200 feet

Note: Monuments shown on Plat in Streets and Avenues are galvanized iron pipe 3/4 inch diameter and 3ft. long driven into the ground.



State of Oregon }
 County of Umatilla } ss I, Frank Saling County Clerk and
 ex-officio clerk of the County of Umatilla State
 of Oregon, do hereby certify that the within Plat
 has been approved by the County Court.
 In testimony whereof I have hereunto set
 my hand and attached the Seal of said Court
 this 22nd day of April 1909.

Frank Saling, Clerk
 By R. T. Brown, Deputy
 Approved April 23, 1909.
 C. P. Strain County Assessor

Filed For Record April 23, 1909.
 At 10:00 A.M. in plat Book 3
 Page 30.

Hartman Abstract Co.,
 Pendleton Oregon

11-176-B
 (4N 29 32)

31 32
 6 5
 T4N. R29E.W.M.
 T3N. R29E.W.M.