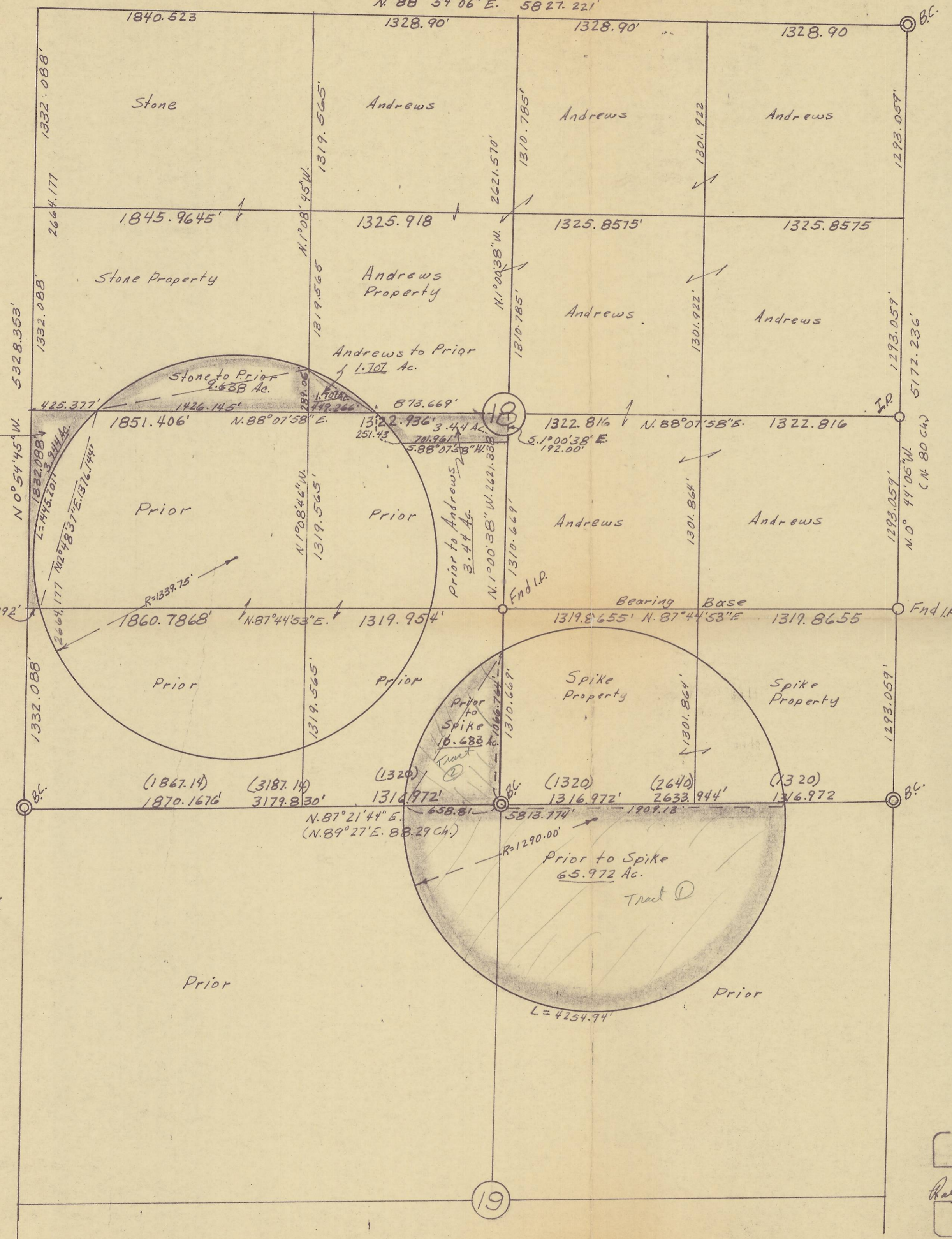


(N. 89° 29' E. 87.70 Ch.)  
 N. 88° 54' 06" E. 5827.221'



Stone to Prior 9.638 Ac.  
 R=1339.75'  
 Arc=1542.544'  
 Long Chord=576°41'50" W 1458.742'  
 Δ=65°58'07"

Prior to Stone 3.944 Ac.  
 R=1339.75'  
 Arc=1445.201'  
 Long Chord=N.12°48'37" E 1376.144'  
 Δ=61°48'20"

Andrews to Prior 1.707 Ac.  
 R=1339.75'  
 Arc=534.797'  
 Long Chord=N.58°52'59" E. 531.256'  
 Δ=22°52'16"

Prior to Andrews 3.44 Ac.  
 R=1339.75'  
 Arc=251.44'  
 Long Chord=N.42°04'15" W. 251.072'  
 Δ=10°45'11"

Prior to Spike 76.655 Ac.  
 In Sec. 18 = 10.683 Ac.  
 R=1290.00'  
 Arc=1235.06'  
 Long Chord=N.34°33'40" E. 1188.42'  
 Δ=54°51'20"

In Sec. 19 = 65.972 Ac.  
 R=1290.00'  
 Arc=4254.94'  
 Long Chord=N.87°21'44" E. 2567.94'  
 Δ=168°54'57"

All Bearings Shown Hereon Are From Oregon State Highway Grid Bearings North Zone:  
 Basis Of Bearings, East-West Centerline S.E. 1/4 Sec. 18, Being N. 87° 44' 53" E. Grid.  
 Bearings & Distances Taken From Drawing No. I-157 Recorded in the Umatilla County Surveyors Office Of Which the remainder Were Computed.  
 No Corners Shown on this Map Were Set By Me.

REGISTERED PROFESSIONAL LAND SURVEYOR  
 Ralph P. Thompson  
 OREGON MAY 13 1960 RALPH P. THOMPSON 508

Computation Of Property Descriptions Of Sprinkler Circles  
**EAGLE RANCH-CHESTER PRIOR**  
 In Sec's 18 & 19, T3N. R29 E. W.M.  
 Date: 10-21-75 Scale: 1" = 500 Ft.  
 RALPH THOMPSON  
 REGISTERED LAND SURVEYOR  
 P. O. BOX 1082 PENDLETON, ORE. 97801  
 06-396-B