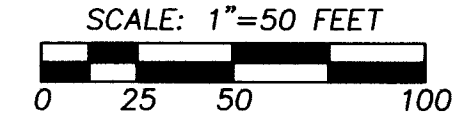
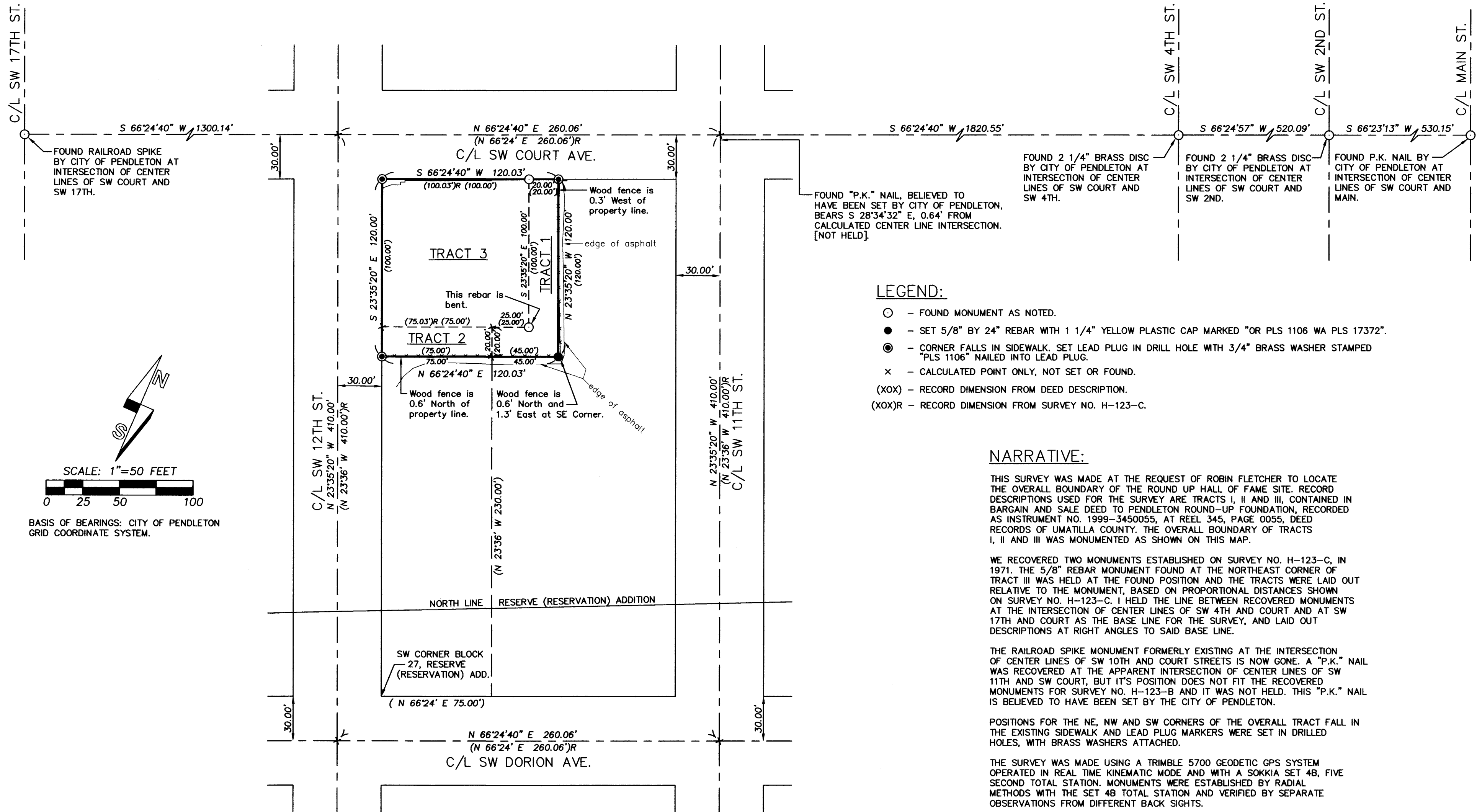


RECORD OF SURVEY



BASIS OF BEARINGS: CITY OF PENDLETON GRID COORDINATE SYSTEM.

- LEGEND:**
- - FOUND MONUMENT AS NOTED.
 - - SET 5/8" BY 24" REBAR WITH 1 1/4" YELLOW PLASTIC CAP MARKED "OR PLS 1106 WA PLS 17372".
 - ⊙ - CORNER FALLS IN SIDEWALK. SET LEAD PLUG IN DRILL HOLE WITH 3/4" BRASS WASHER STAMPED "PLS 1106" NAILED INTO LEAD PLUG.
 - × - CALCULATED POINT ONLY, NOT SET OR FOUND.
 - (XOX) - RECORD DIMENSION FROM DEED DESCRIPTION.
 - (XOX)R - RECORD DIMENSION FROM SURVEY NO. H-123-C.

NARRATIVE:

THIS SURVEY WAS MADE AT THE REQUEST OF ROBIN FLETCHER TO LOCATE THE OVERALL BOUNDARY OF THE ROUND UP HALL OF FAME SITE. RECORD DESCRIPTIONS USED FOR THE SURVEY ARE TRACTS I, II AND III, CONTAINED IN BARGAIN AND SALE DEED TO PENDLETON ROUND-UP FOUNDATION, RECORDED AS INSTRUMENT NO. 1999-3450055, AT REEL 345, PAGE 0055, DEED RECORDS OF UMATILLA COUNTY. THE OVERALL BOUNDARY OF TRACTS I, II AND III WAS MONUMENTED AS SHOWN ON THIS MAP.

WE RECOVERED TWO MONUMENTS ESTABLISHED ON SURVEY NO. H-123-C, IN 1971. THE 5/8" REBAR MONUMENT FOUND AT THE NORTHEAST CORNER OF TRACT III WAS HELD AT THE FOUND POSITION AND THE TRACTS WERE LAID OUT RELATIVE TO THE MONUMENT, BASED ON PROPORTIONAL DISTANCES SHOWN ON SURVEY NO. H-123-C. I HELD THE LINE BETWEEN RECOVERED MONUMENTS AT THE INTERSECTION OF CENTER LINES OF SW 4TH AND COURT AND AT SW 17TH AND COURT AS THE BASE LINE FOR THE SURVEY, AND LAID OUT DESCRIPTIONS AT RIGHT ANGLES TO SAID BASE LINE.

THE RAILROAD SPIKE MONUMENT FORMERLY EXISTING AT THE INTERSECTION OF CENTER LINES OF SW 10TH AND COURT STREETS IS NOW GONE. A "P.K." NAIL WAS RECOVERED AT THE APPARENT INTERSECTION OF CENTER LINES OF SW 11TH AND SW COURT, BUT ITS POSITION DOES NOT FIT THE RECOVERED MONUMENTS FOR SURVEY NO. H-123-B AND IT WAS NOT HELD. THIS "P.K." NAIL IS BELIEVED TO HAVE BEEN SET BY THE CITY OF PENDLETON.

POSITIONS FOR THE NE, NW AND SW CORNERS OF THE OVERALL TRACT FALL IN THE EXISTING SIDEWALK AND LEAD PLUG MARKERS WERE SET IN DRILLED HOLES, WITH BRASS WASHERS ATTACHED.

THE SURVEY WAS MADE USING A TRIMBLE 5700 GEODETIC GPS SYSTEM OPERATED IN REAL TIME KINEMATIC MODE AND WITH A SOKKIA SET 4B, FIVE SECOND TOTAL STATION. MONUMENTS WERE ESTABLISHED BY RADIAL METHODS WITH THE SET 4B TOTAL STATION AND VERIFIED BY SEPARATE OBSERVATIONS FROM DIFFERENT BACK SIGHTS.

REFERENCE SURVEYS:
 SURVEY NO. H-870-A, HARRIS, 1971
 SURVEY NO. H-123-C, STAEBLER, 1971.
 SURVEY NO. 89-127-B, CITY OF PENDLETON, 1976.

REGISTERED PROFESSIONAL LAND SURVEYOR <i>Will R. Wells</i> OREGON JULY 22, 1977 WILLIAM R. WELLS 1106 RENEWS 6/30/06	WILLIAM R. WELLS, PLS 2602 N.E. RIVERSIDE PLACE P.O. BOX 1696 PENDLETON, OR 97801 PHONE: (541) 276-6362	PROJECT: BOUNDARY SURVEY FOR: ROUND UP HALL OF FAME LOCATED IN THE NW1/4 OF SECTION 10, T2N., R32E., W.M. CITY OF PENDLETON, UMATILLA COUNTY, OREGON.
	DATE: 07/04 DR. BY: JMW CK. BY: WRW NO: 04-939 RECEIVED BY:	

Umatilla County Surveyor
 Date 7-04
 Rec'd By LR
04-126-B