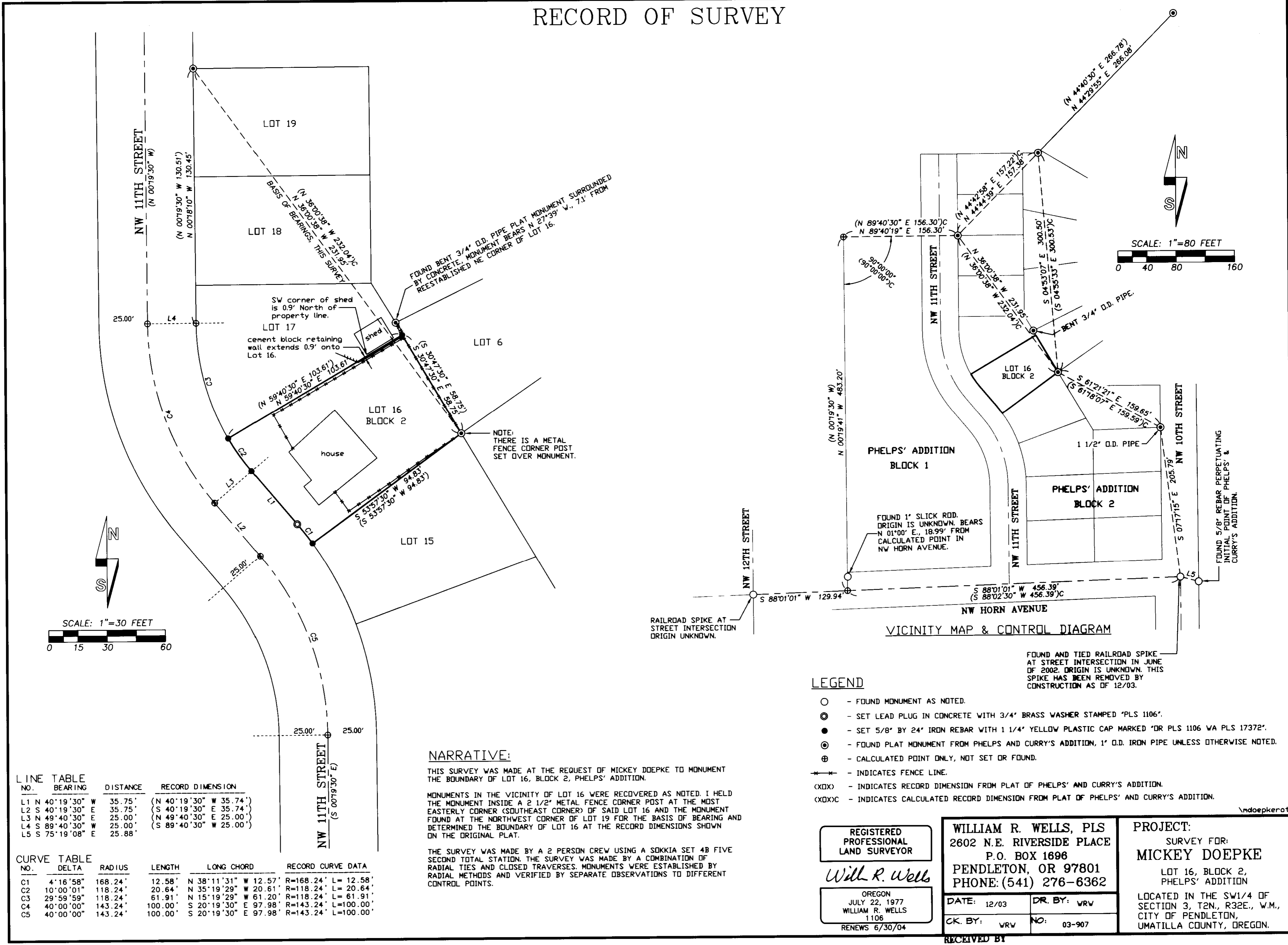


# RECORD OF SURVEY



**LINE TABLE**

NO.	BEARING	DISTANCE	RECORD DIMENSION
L1	N 40°19'30" W	35.75'	(N 40°19'30" W 35.74')
L2	S 40°19'30" E	35.75'	(S 40°19'30" E 35.74')
L3	N 49°40'30" E	25.00'	(N 49°40'30" E 25.00')
L4	S 89°40'30" W	25.00'	(S 89°40'30" W 25.00')
L5	S 75°19'08" E	25.88'	

**CURVE TABLE**

NO.	DELTA	RADIUS	LENGTH	LONG CHORD	RECORD CURVE DATA
C1	4°16'58"	168.24'	12.58'	N 38°11'31" W 12.57'	R=168.24' L=12.58'
C2	10°00'01"	118.24'	20.64'	N 35°19'29" W 20.61'	R=118.24' L=20.64'
C3	29°59'59"	118.24'	61.91'	N 15°19'29" W 61.20'	R=118.24' L=61.91'
C4	40°00'00"	143.24'	100.00'	S 20°19'30" E 97.98'	R=143.24' L=100.00'
C5	40°00'00"	143.24'	100.00'	S 20°19'30" E 97.98'	R=143.24' L=100.00'

**NARRATIVE:**

THIS SURVEY WAS MADE AT THE REQUEST OF MICKEY DOEPKE TO MONUMENT THE BOUNDARY OF LOT 16, BLOCK 2, PHELPS' ADDITION.

MONUMENTS IN THE VICINITY OF LOT 16 WERE RECOVERED AS NOTED. I HELD THE MONUMENT INSIDE A 2 1/2" METAL FENCE CORNER POST AT THE MOST EASTERLY CORNER (SOUTHEAST CORNER) OF SAID LOT 16 AND THE MONUMENT FOUND AT THE NORTHWEST CORNER OF LOT 19 FOR THE BASIS OF BEARING AND DETERMINED THE BOUNDARY OF LOT 16 AT THE RECORD DIMENSIONS SHOWN ON THE ORIGINAL PLAT.

THE SURVEY WAS MADE BY A 2 PERSON CREW USING A SOKKIA SET 4B FIVE SECOND TOTAL STATION. THE SURVEY WAS MADE BY A COMBINATION OF RADIAL TIES AND CLOSED TRAVERSES. MONUMENTS WERE ESTABLISHED BY RADIAL METHODS AND VERIFIED BY SEPARATE OBSERVATIONS TO DIFFERENT CONTROL POINTS.

- LEGEND**
- - FOUND MONUMENT AS NOTED.
  - ⊙ - SET LEAD PLUG IN CONCRETE WITH 3/4" BRASS WASHER STAMPED "PLS 1106".
  - - SET 5/8" BY 24" IRON REBAR WITH 1 1/4" YELLOW PLASTIC CAP MARKED "OR PLS 1106 WA PLS 17372".
  - ⊕ - FOUND PLAT MONUMENT FROM PHELPS AND CURRY'S ADDITION, 1" O.D. IRON PIPE UNLESS OTHERWISE NOTED.
  - ⊗ - CALCULATED POINT ONLY, NOT SET OR FOUND.
  - - INDICATES FENCE LINE.
  - (XDX) - INDICATES RECORD DIMENSION FROM PLAT OF PHELPS' AND CURRY'S ADDITION.
  - (XDX)C - INDICATES CALCULATED RECORD DIMENSION FROM PLAT OF PHELPS' AND CURRY'S ADDITION.

REGISTERED PROFESSIONAL LAND SURVEYOR  <i>Will R. Wells</i>	<b>WILLIAM R. WELLS, PLS</b> 2602 N.E. RIVERSIDE PLACE P.O. BOX 1696 PENDLETON, OR 97801 PHONE: (541) 276-6362	<b>PROJECT:</b> SURVEY FOR: <b>MICKEY DOEPKE</b> LOT 16, BLOCK 2, PHELPS' ADDITION  LOCATED IN THE SW1/4 OF SECTION 3, T2N., R32E., W.M., CITY OF PENDLETON, UMATILLA COUNTY, OREGON.
OREGON JULY 22, 1977 WILLIAM R. WELLS 1106 RENEWS 6/30/04	DATE: 12/03      DR. BY: wrw CK. BY: wrw      NO: 03-907	

**RECEIVED BY**  
 Umatilla County Surveyor  
 Date: 1-04  
 Rec'd By: KK  
 No. 04-07-B