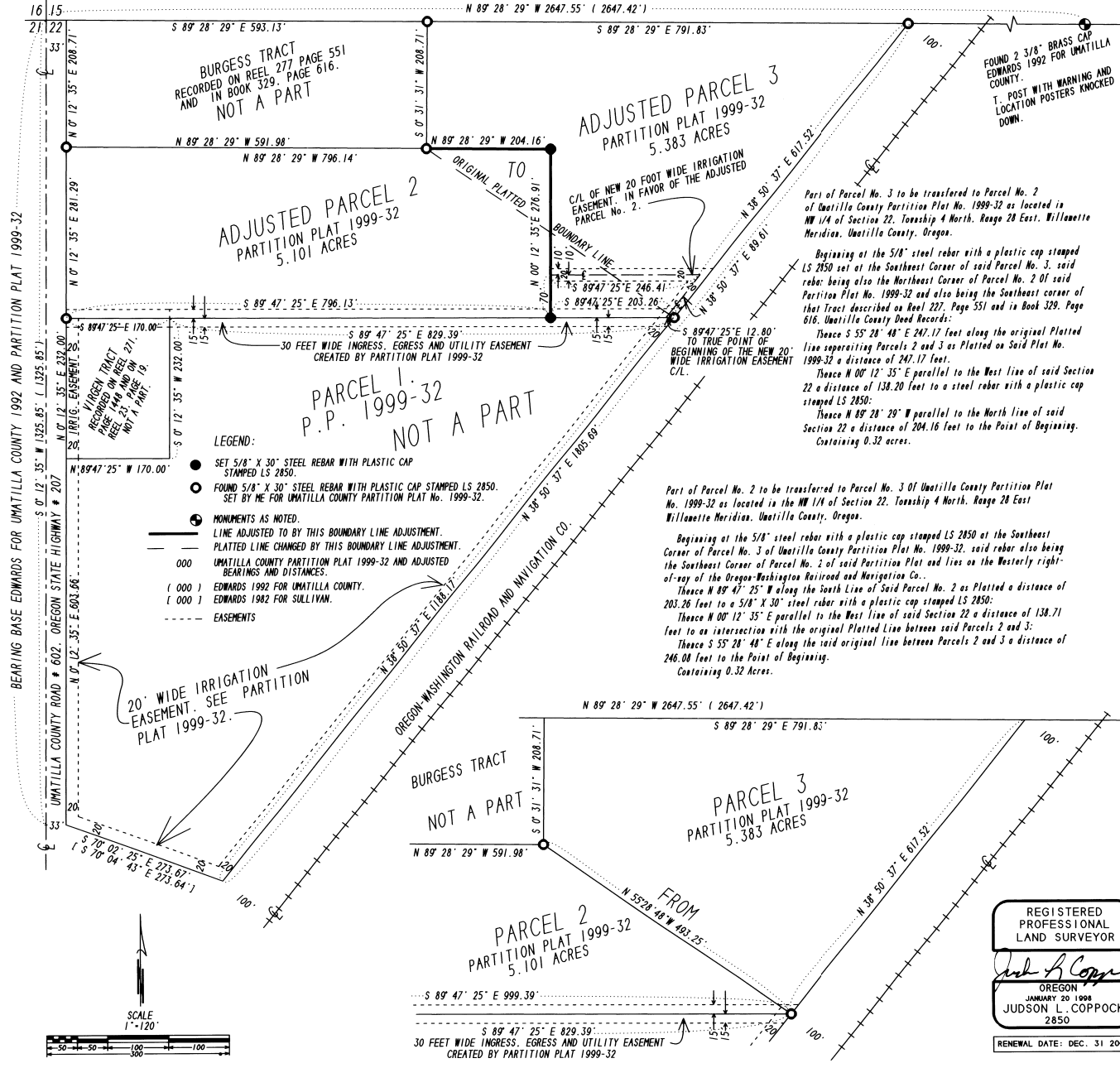


**BOUNDARY LINE ADJUSTMENT BETWEEN PARCELS 2 AND 3
OF UMATILLA COUNTY PARTITION PLAT 1999-32**
LOCATED IN THE NW 1/4 OF SECTION 22, T 4 N, R 28 E, W.M., UMATILLA COUNTY, OREGON.



BURGESS TRACT
RECORDED ON REEL 277 PAGE 551
AND IN BOOK 329, PAGE 616.
NOT A PART

ADJUSTED PARCEL 2
PARTITION PLAT 1999-32
5.101 ACRES

ADJUSTED PARCEL 3
PARTITION PLAT 1999-32
5.383 ACRES

PARCEL 1
P.P. 1999-32
NOT A PART

LEGEND:

- SET 5/8" X 30" STEEL REBAR WITH PLASTIC CAP STAMPED LS 2850.
- FOUND 5/8" X 30" STEEL REBAR WITH PLASTIC CAP STAMPED LS 2850. SET BY ME FOR UMATILLA COUNTY PARTITION PLAT No. 1999-32.
- MONUMENTS AS NOTED.
- LINE ADJUSTED TO BY THIS BOUNDARY LINE ADJUSTMENT.
- - - PLATTED LINE CHANGED BY THIS BOUNDARY LINE ADJUSTMENT.
- 000 UMATILLA COUNTY PARTITION PLAT 1999-32 AND ADJUSTED BEARINGS AND DISTANCES.
- (000) EDWARDS 1992 FOR UMATILLA COUNTY.
- (000) EDWARDS 1992 FOR SULLIVAN.
- - - EASEMENTS

Adjusted Description of Parcel 2, Umatilla County Partition Plat No. 1999-32, Located in Section 22, T 4 N, R 28 E., W.M. Umatilla Co

Beginning at the 5/8" steel rebar with a plastic cap stamped LS 2850 set at the Southeast corner of Parcel 2, Umatilla County Partition Plat No. 1999-32;

Thence N 00° 12' 35" E along the East Right-of-way Line of Oregon State Highway No. 207 a distance of 281.29 feet to the 5/8" steel rebar with a plastic cap stamped LS 2850 set at the Northeast corner of said Parcel 2, being also the Southeast corner of that Tract of Land Described on Reel 277, Page 551, Umatilla County Deed Records;

Thence S 89° 28' 29" E along the South Line of that said Tract Described on Reel 277, Page 551, a distance of 591.98 feet to a 5/8" steel rebar with a plastic cap stamped LS 2850 set at the Northeast corner of said Parcel 2;

Thence containing S 89° 28' 29" E a distance of 204.16 feet to a 5/8" steel rebar with a plastic cap stamped LS 2850;

Thence S 00° 12' 35" W parallel to the said East Right-of-way Line of Highway No. 207 a distance of 276.91 feet to a 5/8" X 30" steel rebar with a plastic cap stamped LS 2850 set on the North Line of Parcel 1 of said Partition Plat No. 1999-32;

Thence N 89° 47' 25" W along the said North Line of Parcel 1 of said Partition Plat No. 1999-32 a distance of 796.13 feet to the Point of Beginning;

Containing 5.101 acres.

Subject to all rights-of-Ways and Easements shown on or created by Umatilla County Partition Plat No. 1999-32.

Also including a see 20 foot wide Irrigation Easement over and across of Parcel No. 3 as Adjusted. The Center Line of this 20 foot wide Irrigation is described as follows:

Commencing at the 5/8" steel rebar with a plastic cap stamped LS 2850 set at the Northeast corner of Parcel No. 1 of Umatilla County Partition Plat No. 1999-32;

Thence N 89° 47' 25" W along the North Line of said Parcel 1 a distance of 12.80 feet to the True Point of Beginning of this Centerline Description;

Thence N 38° 50' 37" parallel to and 10 feet Easterly from the East Line of Parcel No. 3 of said Partition Plat 1999-32 a distance of 89.61 feet;

Thence N 89° 47' 25" W parallel to and 70.00 feet Westerly of the North Line of said Parcel No. 1 a distance of 246.60 feet to an intersection with the Adjusted East Line of Parcel No. 2 of said Partition Plat No. 1999-32. Said intersection being the Terminus Point of this Center Line Description.

Adjusted Description of Parcel 3, Umatilla County Partition Plat No. 1999-32, Located in Section 22, T 4 N, R 28 E., W.M. Umatilla Co

Beginning at the 5/8" steel rebar with a plastic cap stamped LS 2850 set at the Northeast corner of Parcel 3, Umatilla County Partition Plat No. 1999-32; said corner being also the Northeast corner of that Tract of Land Described on Reel 277, Page 551, Umatilla County Deed Records;

Thence S 89° 28' 29" E along the North Line of Section 22, T 4 N, R 28 E., W.M. Umatilla County Oregon a distance of 791.83 feet to the 5/8" X 30" steel rebar with a plastic cap stamped LS 2850 set on the Northwesterly right-of-way Line of the Oregon-Washington Railroad and Navigation Co.;

Thence S 38° 50' 37" W along said Northwesterly right-of-way a distance of 617.52 feet to the 5/8" X 30" steel rebar with a plastic cap stamped LS 2850 set at the Northeast corner of Parcel 1 of said Partition Plat No. 1999-32;

Thence S 89° 47' 25" W along the North Line of said Parcel No. 1 a distance of 203.26 feet to a 5/8" X 30" steel rebar with a plastic cap stamped LS 2850;

Thence N 00° 12' 35" E parallel to the said East Right-of-way Line of Highway No. 207 a distance of 276.91 feet to a 5/8" X 30" steel rebar with a plastic cap stamped LS 2850;

Thence S 89° 47' 25" W a distance of 204.16 feet to a 5/8" X 30" steel rebar with a plastic cap stamped LS 2850 set at the Southeast corner of that said Tract of Land Described on Reel 277, Page 551, Umatilla County Deed Records;

Thence N 00° 31' 13" E along the East Line of that said Tract of Land Described on Reel 277, Page 551, a distance of 208.71 feet to the Point of Beginning.

Containing 5.383 acres.

Subject to all rights-of-Ways and Easements shown on or created by Umatilla County Partition Plat No. 1999-32.

Also subject to a see 20 foot wide Irrigation Easement in favor of Parcel No. 2 as Adjusted. The Center Line of this 20 foot wide Irrigation is described as follows:

Commencing at the 5/8" steel rebar with a plastic cap stamped LS 2850 set at the Northeast corner of Parcel No. 1 of Umatilla County Partition Plat No. 1999-32;

Thence N 89° 47' 25" W along the North Line of said Parcel No. 1 a distance of 12.80 feet to the True Point of Beginning of this Centerline Description;

Thence N 38° 50' 37" E parallel to and 10 feet Easterly from the East Line of Parcel No. 3 of said Partition Plat 1999-32 a distance of 89.61 feet;

Thence N 89° 47' 25" W parallel to and 70.00 feet Westerly of the North Line of said Parcel No. 1 a distance of 246.60 feet to an intersection with the Adjusted East Line of Parcel No. 2 of said Partition Plat No. 1999-32. Said intersection being the Terminus Point of this Center Line Description.

Surveyor's Certificate and Narrative:

I, JUDSON L. COPPOCK, A REGISTERED LAND SURVEYOR FOR THE STATE OF OREGON, DO HEREBY CERTIFY THAT I HAVE CORRECTLY SURVEYED AND MARKED WITH PROPER MONUMENTS THE BOUNDARY LINE ADJUSTMENT SHOWN IN THIS RECORD OF SURVEY.

I SURVEYED AND PLATTED UMATILLA COUNTY PARTITION PLAT NO. 1999-32 FOR THE BENSEL'S IN 1999. THIS IS AN ADJUSTMENT BETWEEN PARCELS 2 AND 3 OF THAT PLAT.

AT THE REQUEST OF TOM BENSEL THIS BOUNDARY LINE ADJUSTMENT WAS PREPARED. THE ONLY LINE AFFECTED IS THE ONE SHOWN BETWEEN PARCELS 2 AND 3. THIS WAS DONE TO PREVENT LIVESTOCK FROM BECOMING TRAPPED IN THE PLATTED TIGHT CORNER ON THE EAST SIDE OF THE ORIGINAL CONFIGURATION OF PARCEL 2.

THIS ADJUSTMENT DOES NOT CHANGE THE PLATTED AREAS OF ANY PARCEL, NOR DOES IT CHANGE OR VACATE ANY EASEMENTS CREATED OR SHOWN ON THE ORIGINAL PLAT.

I USED EXISTING MONUMENTS WHICH I HAD SET FOR UMATILLA COUNTY PARTITION PLAT No. 1999-32 AS THE BASIS OF THIS BOUNDARY LINE ADJUSTMENT.

REGISTERED PROFESSIONAL LAND SURVEYOR

Judson L. Coppock

OREGON
JANUARY 20, 1998
JUDSON L. COPPOCK
2850

RENEWAL DATE: DEC. 31 2003

RECEIVED BY
Umatilla County Survey

11-02
KE
02-204-B

BOUNDARY LINE ADJUSTMENT OF UMATILLA COUNTY PARTITION PLAT No. 1999-32.
TOM E. AND LORRIE BENSEL
LOCATED IN THE NW 1/4 OF SECTION 22, T 4 N, R 28 E., W.M. UMATILLA COUNTY, OREGON.

COPPOCK SURVEYING 541-676-8750
PO BOX 495 FAX 676-8753 24 SEPT. 2002
HEPPNER, OR 97838 REVISED 2 OCT. 2002
JOB # 0702220 REVISED 8 OCT. 2002

