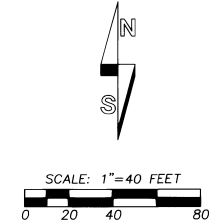


RECORD OF SURVEY

CURVE NO.	DELTA	RADIUS	LENGTH	LONG CHORD	RECORD DIMENSION
C1	8°58'01"	225.00'	35.21'	S61°55'00"W 35.18'	(35.3' CURVE LENGTH)
C2	20°15'30"	225.00'	79.55'	S47°18'14"W 79.14'	(79.75' CURVE LENGTH)
C3	20°15'30"	225.00'	79.55'	S27°02'44"W 79.14'	(79.75' CURVE LENGTH)
C4	10°07'45"	225.00'	39.78'	S11°51'07"W 39.73'	(38.875' CURVE LENGTH PER DEED RECORD)
C5	10°07'45"	225.00'	39.78'	S01°43'22"W 39.73'	(38.875' CURVE LENGTH PER DEED RECORD)
C6	17°35'33"	225.00'	69.09'	S12°08'16"E 68.81'	
C7	92°39'57"	10.00'	16.17'	S67°16'01"E 14.47'	(10.00' RADIUS)
C8	86°10'39"	10.00'	15.04'	S23°18'41"W 13.66'	(10.00' RADIUS)
C9	16°37'55"	140.00'	40.64'	S11°27'41"E 40.50'	
C10	10°13'38"	140.00'	24.99'	N01°58'05"E 24.96'	(25' CURVE LENGTH PER DEED RECORD)
C11	10°13'38"	140.00'	24.99'	N12°11'44"E 24.96'	(25' CURVE LENGTH PER DEED RECORD)
C12	20°27'17"	140.00'	49.98'	N27°32'12"E 49.72'	(50' CURVE LENGTH)
C13	20°27'17"	140.00'	49.98'	N47°59'28"E 49.72'	(50' CURVE LENGTH)
C14	8°10'54"	140.00'	19.99'	N62°18'33"E 19.97'	(20.0' CURVE LENGTH)
C15	2°39'57"	225.00'	10.47'	N22°16'00"W 10.47'	
C16	3°49'21"	140.00'	9.34'	N21°41'19"W 9.34'	



NARRATIVE

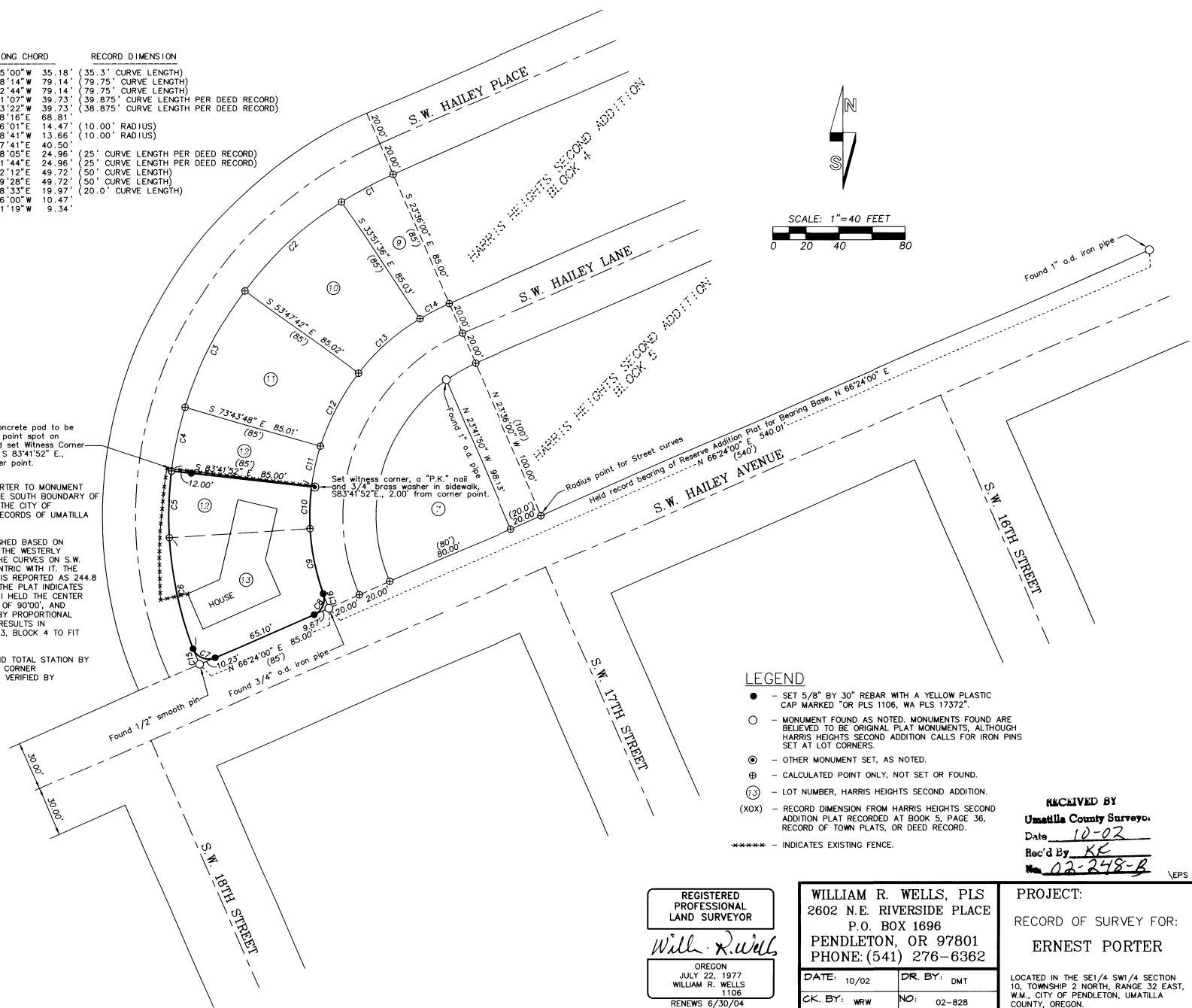
THIS SURVEY WAS MADE AT THE REQUEST OF ERNEST PORTER TO MONUMENT THE NORTH LINE OF THE SOUTH HALF OF LOT 12 AND THE SOUTH BOUNDARY OF LOT 13, BLOCK 4, HARRIS HEIGHTS SECOND ADDITION TO THE CITY OF PENDLETON, DESCRIBED AT BOOK 263, PAGE 112, DEED RECORDS OF UMATILLA COUNTY.

LOT CORNER LOCATIONS WERE RECOVERED OR REESTABLISHED BASED ON RECOVERED MONUMENTS SHOWN ON THE ORIGINAL PLAT. THE WESTERLY CIRCULAR CURVE ON S.W. HAILEY PLACE DOES NOT FIT THE CURVES ON S.W. HAILEY LANE OR S.W. GOODWIN PLACE WHICH ARE CONCENTRIC WITH IT. THE RADIUS OF THE WESTERLY CURVE ON S.W. HAILEY PLACE IS REPORTED AS 244.8 FEET AT CENTER LINE WHILE OTHER DATA REPORTED ON THE PLAT INDICATES THE RADIUS SHOULD BE 245.00 FEET. FOR THIS SURVEY, I HELD THE CENTER LINE RADIUS AT 245.00 FEET, THE RECORD DELTA ANGLE OF 90°00', AND RECALCULATED THE LOT WIDTHS ON S.W. HAILEY PLACE, BY PROPORTIONAL METHODS, TO FIT THE MATHEMATICAL CURVE DATA. THIS RESULTS IN SLIGHTLY DIFFERENT LOT LENGTHS ON LOTS 9 THROUGH 13, BLOCK 4 TO FIT MATHEMATICAL DATA.

THE SURVEY WAS MADE WITH A LEITZ SET 36 ONE SECOND TOTAL STATION BY A COMBINATION OF CLOSED TRAVERSES AND RADIAL TIES. CORNER MONUMENTS WERE ESTABLISHED BY RADIAL METHODS AND VERIFIED BY SEPARATE OBSERVATIONS.

Corner falls in concrete pad to be removed. Marked point spot on concrete pad and set Witness Corner on property line, S 83°41'52" E, 12.00' from corner point.

Set witness corner, a "P.K." nail and 3/4" brass washer in sidewalk, S83°41'52"E, 2.00' from corner point.



LEGEND

- - SET 5/8" BY 30" REBAR WITH A YELLOW PLASTIC CAP MARKED "OR PLS 1106, WA PLS 17372".
- - MONUMENT FOUND AS NOTED. MONUMENTS FOUND ARE BELIEVED TO BE ORIGINAL PLAT MONUMENTS, ALTHOUGH HARRIS HEIGHTS SECOND ADDITION CALLS FOR IRON PINS SET AT LOT CORNERS.
- ⊙ - OTHER MONUMENT SET, AS NOTED.
- ⊕ - CALCULATED POINT ONLY, NOT SET OR FOUND.
- ⊗ - LOT NUMBER, HARRIS HEIGHTS SECOND ADDITION.
- (XOX) - RECORD DIMENSION FROM HARRIS HEIGHTS SECOND ADDITION PLAT RECORDED AT BOOK 5, PAGE 36, RECORD OF TOWN PLATS, OR DEED RECORD.
- ***** - INDICATES EXISTING FENCE.

RECEIVED BY
Umatilla County Surveyor
 Date 10-02
 Rec'd By KE
 No. 02-248-B VEPS

REGISTERED PROFESSIONAL LAND SURVEYOR
William R. Wells
 OREGON
 JULY 22, 1977
 WILLIAM R. WELLS
 1106
 RENEWS 6/30/04

WILLIAM R. WELLS, PLS
 2602 N.E. RIVERSIDE PLACE
 P.O. BOX 1696
 PENDLETON, OR 97801
 PHONE: (541) 276-6362

DATE: 10/02 DR. BY: DMT
 CK. BY: WRW NO: 02-828

PROJECT:
 RECORD OF SURVEY FOR:
ERNEST PORTER

LOCATED IN THE SE1/4 SW1/4 SECTION 10, TOWNSHIP 2 NORTH, RANGE 32 EAST, W.M., CITY OF PENDLETON, UMATILLA COUNTY, OREGON.