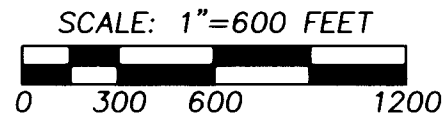


RECORD OF SURVEY
SECTIONS 14, 22, 23 & 24, T5S., R31E., W.M.,
UMATILLA COUNTY, OREGON



BASIS OF BEARINGS: BEARINGS ARE ROTATED TO TRUE NORTH BASED ON G.P.S. GEODETIC OBSERVATION 150 FEET WEST OF THE CENTER 1/4 OF SECTION 14.

LEGEND

- - FOUND ORIGINAL CORNER EVIDENCE AND REMONUMENTED WITH 2 1/2" BRASS CAP ON 1 1/4" X 30" GALVANIZED PIPE, SEE CORNER CERTIFICATE FILED WITH THIS SURVEY.
- - SET 2 1/2" BRASS CAP ON 1 1/4" X 30" GALVANIZED PIPE AT CALCULATED CORNER POSITION. SEE CORNER CERTIFICATE FILED WITH THIS SURVEY.
- ⊕ - CALCULATED POINT ONLY, NOT SET OR FOUND.
- (XOX) - RECORD DIMENSION FROM GLO SURVEY BY GEORGE S. PERSHIN UNDER CONTRACT NO. 373 DATED SEPTEMBER 17, 1880.

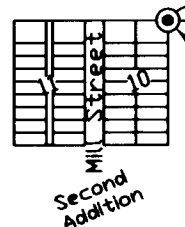
OREGON STATE PLANE NORTH ZONE COORDINATES, NAD 83/91, INT. FEET:
FOR TRUE POSITION OF "LOCAL" C1/4:
N = 538892.02
E = 8606791.13
FOR EXISTING DISPLACED CONCRETE MONUMENT:
N = 538892.53
E = 8606971.83

Found original marked corner stone lying loose at edge of rock crib approximately S 17° W., 62' from calculated position. Corner was destroyed by road construction.

Found circular stone mound and root hole of 1 B.T.

Note:
Survey No. 98-21-B, by Wayne Harris does not attempt to locate the N. line of the S1/2 NE1/4. The survey line runs "East" from N.E. Corner of Block 10. This survey was not retraced.

existing fence is within 1' of line.



N.E. Corner of Block 10 Second Addition to Ukiah. A Point on N. Line S1/2 NE1/4 per Plat. Found 2 1/2" brass cap on 2 1/2" galv. iron pipe per Survey No. 86-131-A.

Center 1/4 Corner of Section 14 is marked by a 15' by 15' concrete monument marked with an 'X'. This monument has been disturbed as noted on Surveys Q-1263-B and D-2-C & 91-036-B. I find the monument to be N 53°43' E., 0.86' from true position based on ties to the referenced surveys. The origin of this monument is not known but nearly all Town Plats in the City of Ukiah are referenced to it. Dimensions from opposite 1/4 Corners on the exterior of Section 14 are to this Center 1/4 Corner location. The location of the Center 1/4 Corner calculated by normal methods would fall S 31°39'58" E., 28.02' from the true position of "local" Center 1/4 Corner. It should be noted that Town Plat dimensions run record aliquot part dimensions from the Center 1/4 Corner. (i.e. 330', 660', 1320', 2640'). The direction of the plat lines should be determined by plat monuments rather than section breakdown lines.

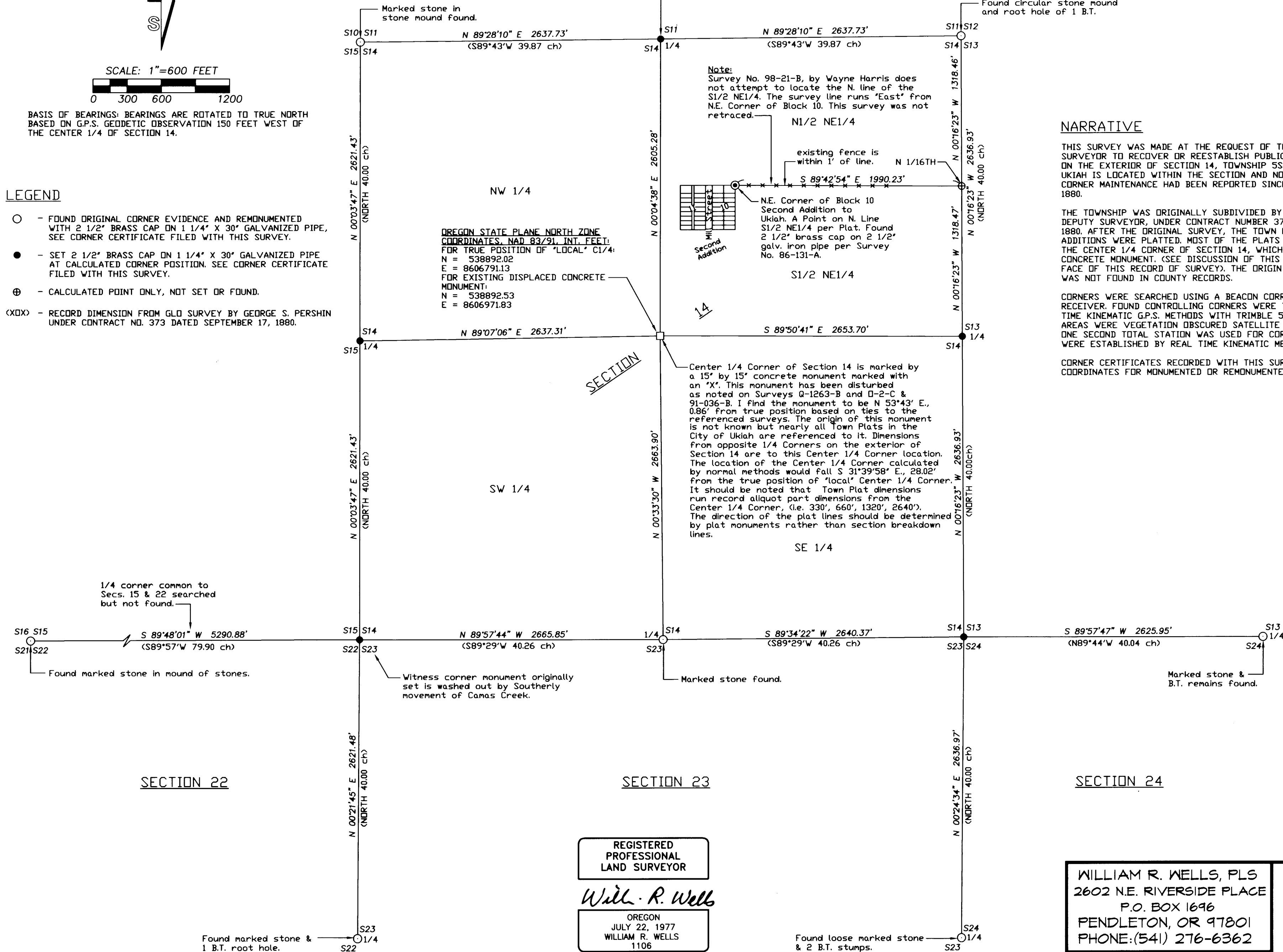
NARRATIVE

THIS SURVEY WAS MADE AT THE REQUEST OF THE UMATILLA COUNTY SURVEYOR TO RECOVER OR REESTABLISH PUBLIC LAND SURVEY CORNERS ON THE EXTERIOR OF SECTION 14, TOWNSHIP 5S., RANGE 31E., W.M. THE CITY OF UKIAH IS LOCATED WITHIN THE SECTION AND NO PUBLIC LAND SURVEY CORNER MAINTENANCE HAD BEEN REPORTED SINCE THE ORIGINAL SURVEYS IN 1880.

THE TOWNSHIP WAS ORIGINALLY SUBDIVIDED BY GEORGE S. PERSHIN, U.S. DEPUTY SURVEYOR, UNDER CONTRACT NUMBER 373, DATED SEPTEMBER 17, 1880. AFTER THE ORIGINAL SURVEY, THE TOWN OF UKIAH AND ITS VARIOUS ADDITIONS WERE PLATTED. MOST OF THE PLATS REFERENCED IN SOME WAY TO THE CENTER 1/4 CORNER OF SECTION 14, WHICH IS NOW MONUMENTED BY A CONCRETE MONUMENT. (SEE DISCUSSION OF THIS CENTER 1/4 CORNER ON THE FACE OF THIS RECORD OF SURVEY). THE ORIGIN OF THE CENTER 1/4 CORNER WAS NOT FOUND IN COUNTY RECORDS.

CORNERS WERE SEARCHED USING A BEACON CORRECTED SUB-METER G.P.S. RECEIVER. FOUND CONTROLLING CORNERS WERE TIED BY STATIC OR REAL TIME KINEMATIC G.P.S. METHODS WITH TRIMBLE 5700 GEODETIC UNITS. IN AREAS WHERE VEGETATION OBSCURED SATELLITE RECEPTION, A LEITZ SET 3B ONE SECOND TOTAL STATION WAS USED FOR CORNER TIES. MISSING CORNERS WERE ESTABLISHED BY REAL TIME KINEMATIC METHODS.

CORNER CERTIFICATES RECORDED WITH THIS SURVEY CONTAIN STATE PLANE COORDINATES FOR MONUMENTED OR REMONUMENTED CORNERS.



SECTION 22

SECTION 23

SECTION 24

REGISTERED PROFESSIONAL LAND SURVEYOR

Will. R. Wells

OREGON
JULY 22, 1977
WILLIAM R. WELLS
1106
RENEWS 6/30/04

RECEIVED BY
Umatilla County Surveyor
Date 10-02
Rec'd By KK
No. 02-218-B

UKIAHGI

WILLIAM R. WELLS, PLS
2602 N.E. RIVERSIDE PLACE
P.O. BOX 1696
PENDLETON, OR 97801
PHONE: (541) 276-6362

PROJECT:

SURVEY FOR:
UMATILLA COUNTY

LOCATED IN SECTIONS 14, 22, 23 & 24, T5S., R31E., W.M., UMATILLA COUNTY, OREGON.

DATE: 08/02 DR. BY: JMW
CK BY: WRW NO: 01-781

Found loose marked stone & 2 B.T. stumps.

Found marked stone & 1 B.T. root hole.

Marked stone & B.T. remains found.

Marked stone found.

Witness corner monument originally set is washed out by Southerly movement of Camas Creek.

1/4 corner common to Secs. 15 & 22 searched but not found.

Found marked stone in mound of stones.