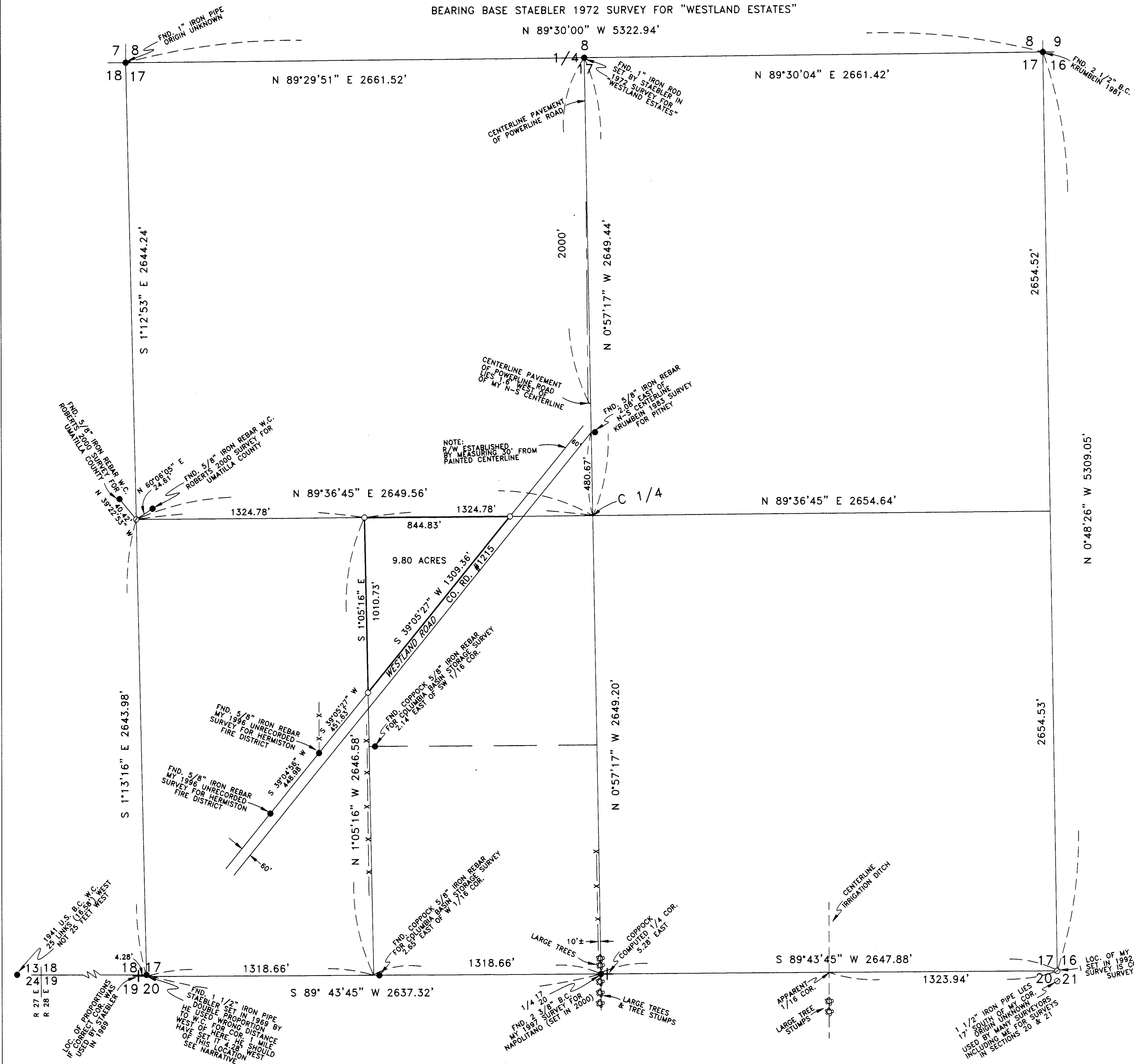


BEARING BASE STAEBLER 1972 SURVEY FOR "WESTLAND ESTATES"

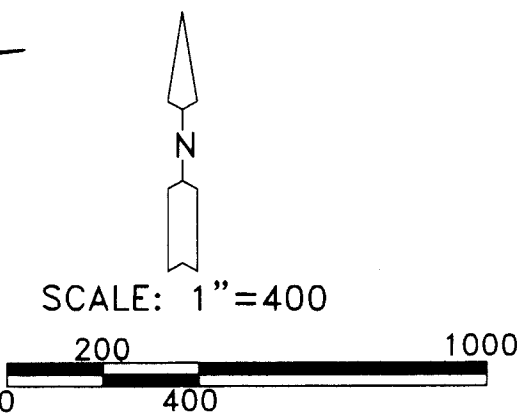


NARRATIVE:

THE PURPOSE OF THIS SURVEY TO SET THE CORNERS OF THAT PORTION OF THE NORTHEAST QUARTER OF THE SOUTHWEST QUARTER OF SECTION 17, T 4 N, R 28 E, W.M., UMATILLA COUNTY, OREGON, WHICH LIES NORTHWESTERLY OF WESTLAND ROAD FOR THE POSSIBLE LOCATION OF SOME NEW FACILITIES FOR THE IRRIGATION DISTRICT. THIS PARCEL IS A PORTION OF THE LAND DESCRIBED IN A DEED TO THE WESTLAND IRRIGATION DISTRICT RECORDED IN BOOK 254, PAGE 81, UMATILLA COUNTY DEED RECORDS.

IN A 1997 SURVEY FOR NAPOLITANO I COMPUTED THE LOCATION OF THE S 1/4 OF SECTION 17 USING IMPROVEMENTS OVER PROPORTIONING EVEN THOUGH I FORGOT TO MENTION THE REASONING IN MY NARRATIVE. I DID NOT SET THAT CORNER UNTIL COPPOCK ASK ABOUT IT RIGHT BEFORE HIS 2000 SURVEY FOR COLUMBIA BASIN STORAGE. HE DID NOT USE MY CORNER CHOOSING TO SINGLE PROPORTION ONE IN EVEN THOUGH HIS PROPORTIONED ONE MISSES ALL IMPROVEMENTS MUCH WORSE THAN MY CORNER DOES. COPPOCK PROPORTIONED FROM THE MONUMENT AT THE SW CORNER OF SECTION 17 WHICH STAEBLER SET IN 1969 BUT STAEBLER USED THE WRONG DISTANCE FOR A WITNESS CORNER AT THE SW CORNER OF SECTION 18 AND WOULD HAVE SET THE SW CORNER OF SECTION 17 OVER 4 FEET WEST OF WHERE HE DID SET IT IF THE CORRECT INFORMATION WERE USED. STAEBLER'S CORNER HAS BEEN USED BY MANY SURVEYORS SINCE 1969 AND IS AN ACCEPTED CORNER BUT IT SHOULD NOT BE USED TO PROPORTION OTHER CORNERS FROM. ALSO THE IRON PIPE WHICH IS 17 FEET SOUTH OF MY CORNER AT THE SE CORNER OF SECTION 17 SHOULD NOT BE USED TO PROPORTION FROM EITHER BECAUSE IT IS OBVIOUSLY NOT IN THE CORRECT LOCATION FOR NORTHINGS SO SHOULD BE SUSPECT ALSO. I FELT THAT VERY OLD TREE LINES WERE BETTER INDICATIONS OF WHERE MONUMENTS SHOULD GO OVER PROPORTIONED LOCATIONS ESPECIALLY WHEN INCORRECT MONUMENTS AND SUSPECT MONUMENTS ARE USED. I HAD TIED THE TREE LINE AND ALSO IMPROVEMENTS AT THE EAST 1/16 CORNER TO MAKE MY DECISION OF WHERE TO SET THE SOUTH 1/4 CORNER. ALL OF THE IMPROVEMENTS TIED SUCH AS TREE LINES, FENCE LINES, AND THE CENTER LINE OF POWERLINE ROAD INDICATE THAT, IF ANYTHING, MY S 1/4 CORNER SHOULD BE WEST OF WHERE I SET IT.

REGISTERED PROFESSIONAL LAND SURVEYOR
G. Dennis Edwards
 OREGON
 JULY 16, 1971
 G. DENNIS EDWARDS
 9 5 1
 RENEWS 12/31/2001



LEGEND:

- MONUMENTS FOUND AS NOTED
- SET 5/8"X30" IRON REBAR WITH PLASTIC CAP #951
- ⊙ COMPUTED LOCATION

SURVEY FOR WESTLAND IRRIGATION DISTRICT IN SW 1/4, SECTION 17, T 4 N, R 28 E, W.M., UMATILLA COUNTY, OREGON
 4/16/2001 JOB# S0103055
 EDWARDS SURVEYING P.O. BOX 763
 541-567-3336 HERMISTON, OREGON 97838
 DRAWN BY NJF

RECEIVED BY
 Umatilla County Surveyor
 Date 8-01
 Rec'd by KK
 No. 01-125-B

01-125-B