

NORTHEAST CORNER OF THE NORTHWEST QUARTER OF THE SOUTHWEST QUARTER

EAST 1/4 CORNER SECTION 29.  
FOUND 2 1/2" BRASS CAP ON GLAV. IRON PIPE PER SURVEY NO. 93-064-C.

S 04°56'53" E

N 04°56'53" W 350.01  
(350 MLD)

S 04°56'53" E 470.78

Monument by PLS 10591 bears South 36°48' East, 2.2 ft. from N.E. Corner Quinn Tract. (1.3 ft. East of East line of Quinn).

60 FT. PUBLIC EASEMENT DEDICATED ON PARTITION PLAT NO. 1990-14.

LANDS OF GUINN, REEL 248, PAGE 222, DEED RECORDS. 3.90 ACRES, M/L EXCLUDING RIGHT-OF-WAY OF COUNTY ROAD NO. 628.

1530 MLD  
N 00°26'01" W 498.48

PARTITION PLAT NO. 1990-14.

SURVEY NO. 94-074-B

S 00°26'01" E 500.75  
(500 MLD)

S 04°05'44" E 2635.91  
(S 04°05'44" E 2635.91)RI

N 00°59'51" W 2650.51  
(S 00°59'51" E 2650.51)RI

N 00°59'51" W 2650.51  
(S 00°59'51" E 2650.51)RI

N 00°59'51" W 2650.51  
(S 00°59'51" E 2650.51)RI

N 00°59'51" W 2650.51  
(S 00°59'51" E 2650.51)RI

N 00°59'51" W 2650.51  
(S 00°59'51" E 2650.51)RI

N 00°59'51" W 2650.51  
(S 00°59'51" E 2650.51)RI

N 00°59'51" W 2650.51  
(S 00°59'51" E 2650.51)RI

N 00°59'51" W 2650.51  
(S 00°59'51" E 2650.51)RI

N 00°59'51" W 2650.51  
(S 00°59'51" E 2650.51)RI

N 00°59'51" W 2650.51  
(S 00°59'51" E 2650.51)RI

N 00°59'51" W 2650.51  
(S 00°59'51" E 2650.51)RI

N 00°59'51" W 2650.51  
(S 00°59'51" E 2650.51)RI

N 00°59'51" W 2650.51  
(S 00°59'51" E 2650.51)RI

N 00°59'51" W 2650.51  
(S 00°59'51" E 2650.51)RI

N 00°59'51" W 2650.51  
(S 00°59'51" E 2650.51)RI

S 04°05'44" E 2635.91  
(S 04°05'44" E 2635.91)RI

N 00°59'51" W 2650.51  
(S 00°59'51" E 2650.51)RI

N 00°59'51" W 2650.51  
(S 00°59'51" E 2650.51)RI

N 00°59'51" W 2650.51  
(S 00°59'51" E 2650.51)RI

N 00°59'51" W 2650.51  
(S 00°59'51" E 2650.51)RI

N 00°59'51" W 2650.51  
(S 00°59'51" E 2650.51)RI

N 00°59'51" W 2650.51  
(S 00°59'51" E 2650.51)RI

N 00°59'51" W 2650.51  
(S 00°59'51" E 2650.51)RI

N 00°59'51" W 2650.51  
(S 00°59'51" E 2650.51)RI

N 00°59'51" W 2650.51  
(S 00°59'51" E 2650.51)RI

N 00°59'51" W 2650.51  
(S 00°59'51" E 2650.51)RI

N 00°59'51" W 2650.51  
(S 00°59'51" E 2650.51)RI

N 00°59'51" W 2650.51  
(S 00°59'51" E 2650.51)RI

N 00°59'51" W 2650.51  
(S 00°59'51" E 2650.51)RI

N 00°59'51" W 2650.51  
(S 00°59'51" E 2650.51)RI

N 00°59'51" W 2650.51  
(S 00°59'51" E 2650.51)RI



SCALE: 1"=60 FEET  
0 30 60 120

"BASIS OF BEARINGS", SURVEY NO. 93-064-C.

N 00°26'01" W 149.53  
N 00°26'01" W 800.00  
N 00°26'01" W 800.00

(350)D  
N 04°36'23" E 350.00  
N 04°36'23" E 261.81

COUNTY ROAD NO. 628  
60 FT. RIGHT-OF-WAY  
(LOCATION IN SEPTEMBER, 1998)

LANDS OF CLIFTON, REEL 260, PAGE 1104, DEED RECORDS. 0.75 ACRE, M/L.

1530 MLD  
S 00°26'01" E 218.20

PARTITION PLAT NO. 1990-14.

Monument by PLS 10591 bears South 02°14' East, 144.9 ft. from corner common to Clifton & Quinn. (4.3 ft. East of East line of Clifton).

Fd. 1/2" Iron pin

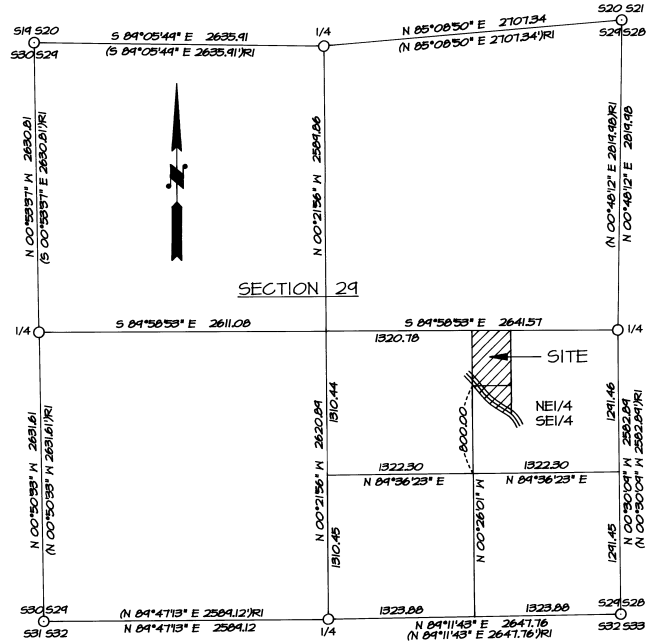
60 FT. PUBLIC EASEMENT DEDICATED ON PARTITION PLAT NO. 1990-14.

LEGEND

- - SECTION OR 1/4 SECTION CORNER IDENTIFIED ON SURVEY NO. 93-064-C.
- - SET 5/8" BY 50" IRON PIN WITH 1 1/2" YELLOW PLASTIC CAP MARKED OR PLS 1106 WA PLS 11972.
- ⊙ - CALCULATED POINT ONLY, NOT SET OR FOUND.
- ⊙ - FOUND 5/8" IRON PIN WITH 1 1/2" YELLOW PLASTIC CAP MARKED OR PLS 1106 WA PLS 11972 FROM SURVEY NO. 94-074-B.
- ⊙ - FOUND 1" OD PIPE WITH 1" YELLOW CAP MARKED OR 10591 WA 12646 FROM PARTITION PLAT NO. 1990-14, UNLESS OTHERWISE NOTED.

(XOX)RI - RECORD DIMENSION FROM SURVEY NO. 93-064-C.  
(XOX)D - RECORD DIMENSION FROM DEED DESCRIPTION.

SOUTHWEST CORNER OF THE NORTHWEST QUARTER OF THE SOUTHWEST QUARTER



CONTROL DIAGRAM  
SECTION 29, T4N., R37E., W.M.

SCALE: 1"=800 FEET



NARRATIVE OF SURVEY

THIS SURVEY WAS MADE AT THE REQUEST OF MIKE GUINN AND CATHERINE CLIFTON TO IDENTIFY AND MONUMENT CORNERS OF THEIR RESPECTIVE OWNERSHIPS. BOUNDARY CORNERS WERE ESTABLISHED OR RECOVERED AS SHOWN.

ALONG THE EAST LINE OF THE GUINN AND CLIFTON TRACTS, MONUMENTS WERE RECOVERED AS ESTABLISHED ON UMATILLA COUNTY PARTITION PLAT NO. 1990-14. MONUMENTS FROM PARTITION PLAT NO. 1990-14 ARE LOCATED SEVERAL FEET EAST OF THE EAST LINE OF THE GUINN/CLIFTON TRACTS AS INDICATED ON THIS MAP. MONUMENTS SET ON PARTITION PLAT NO. 1990-14 WERE SET WITHOUT SUBDIVISION OF SECTION 29, WHICH IS CLEARLY STATED ON THE PARTITION PLAT MAP.

THIS SURVEY WAS MADE WITH A 2 PERSON CREW USING A SOKKIA SET 48 FIVE SECOND TOTAL STATION. MEASUREMENTS WERE MADE BY A COMBINATION OF CLOSED TRAVERSES AND RADIAL TIES. SURVEY NO. 93-064-C IS THE BASIS OF CONTROL FOR THE PRESENT SURVEY.

11-98  
KK  
98-236-B VCCA

REGISTERED PROFESSIONAL LAND SURVEYOR

*William R. Wells*

OREGON  
JULY 22, 1977  
WILLIAM R. WELLS  
1106  
RENEWS 6/30/00

WILLIAM R. WELLS, PLS  
357 N.E. HWY. 11  
P.O. BOX 1696  
PENDLETON, OR 97801  
PHONE:(541) 276-6362

DATE: 04/24/98 DR. BY: WRW  
CK. BY: WRW NO. 98-557

PROJECT:  
BOUNDARY SURVEY FOR:  
MIKE GUINN  
CATHERINE CLIFTON  
LOCATED IN THE NE1/4 SE1/4 OF SECTION 29, T4N., R37E., W.M., UMATILLA COUNTY, OREGON.