

BASIS of BEARING

Solar observation taken at a point
360 feet South of the East 1/4 corner
of Section 36, T 3 N, R 37 E, WM.

Date: 9-25-1990
Latitude: 45° 41' 44"
Longitude: 118° 07' 40"
D: -0° 40' 06"
GHA: 183° 13' 19"
LHA: 65° 05' 39"
Magnetic Declination = 20° East

SCALE: 1" = 500'

HISTORY of SURVEYS

The Range Line was originally established
by George S. Pershin under GLO contract number
304, dated September 19, 1878.

The Range Line was retraced by William E.
Campbell under GLO contract number 718 dated
May 1, 1900.

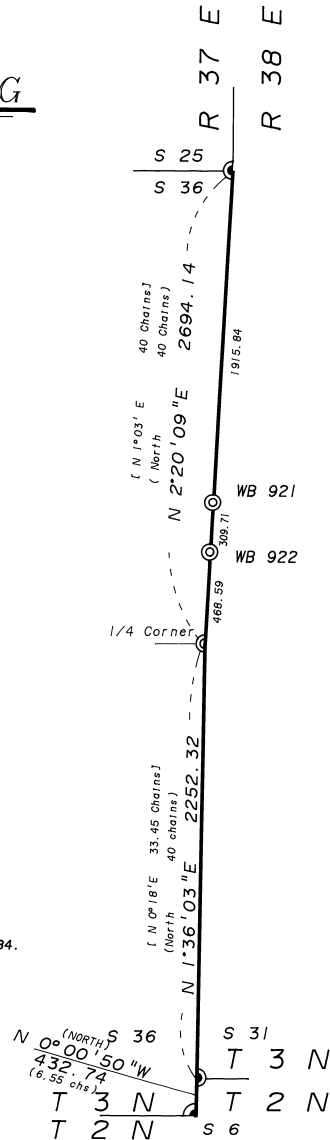
REFERENCE MATERIAL

General Land Office Survey Notes of:

Contract Number 304, Dated September, 19, 1878.

Contract Number 718, Dated May, 1, 1900.

Wilderness Boundary Description Dated June 26, 1984.



NARRATIVE

I, Duane I. Griffith, Registered Land Surveyor in the State of Oregon, hereby certify that this plat and the notes hereon, or attached, are a true and correct representation of the survey I made in July, August, and September, of 1991, and in June, 1992, at the request of USDA Forest Service, in accordance with the statutes of the State of Oregon and with the articles of my contract.

This survey was made to locate the E 1/4 corner of section 36, on the Range line between Ranges 37 and 38 East, Township 3 North. The range line was originally run by George S. Pershin in 1878. In 1900 William E. Campbell retraced the line preparatory to the subdivision of said township and range. Campbell ran north from the township corner. His record states; At 6.55 chains, intersect the closing corner of T 3 N, R 38 E. At 40 chains, found the 1/4 corner 17 links East; At 80 chains, found the section corner 90 links East; and so on along this line. I found the township corner to T 3 N, R 37 E, the township corner to T 3 N, R 38 E, and the corner to sections 25 and 36. The 1/4 corner falls in a logged over area and on a skid trail, I found no trace of the original corner. I placed the East 1/4 corner by the "irregular exterior" method as set forth in the BLM Manual, 1973, section 5-36. Using Campbell's retracement in 1900, I placed said 1/4 corner at the proportionate position between the corner to Twp's 3 and 2 North R 38 E, and the corner common to sections 25 & 36, T 3 N, R 37 E. I found no unusual conditions in this survey.



LEGEND

- ⓐ Found G.L.O. corner, set 2-1/2" X 30" aluminum pipe with cap marked as shown on remonumentation sheets
- ⓑ Set 2-1/2" X 30" aluminum pipe with cap marked as shown on remonumentation records.
- ⓐ Set 2-1/2" X 30" aluminum pipe with cap marked as shown on remonumentation records, on Wilderness Boundary
- () Record bearing and distance recorded by George S. Pershin
- [] Record bearing and distance recorded by William E. Campbell. Computed from offset calls

See corner monumentation sheets filed separately

The information within these boxes is for U.S. Forest Service record keeping purposes only

PROJECT NAME
Wilderness Boundary Survey
CONTRACT NUMBER
53-04R3-80-51
FIELD BOOKS
Traverse Book 1 of 4
Remonumentation Book

Examined and accepted for the U.S. Forest Service
this 30 day of ~~September~~ 1992.
W. Dennis R. Dayland C.O.R.
I certify that this survey was performed at the
request of the Umatilla National Forest
NATIONAL FOREST SUPERVISOR
W.D. J. [Signature]
Signature Date 9-30-92

BAGETT-GRIFFITH & ASSOCIATES LaGrande, Oregon Map of Survey	
Retracement of the East line of Section 36 T 3 N, R 37 E Willamette Meridian UMATILLA COUNTY	
RECEIVED BY Umatilla County Surveyor Date: 10-12-92 Rec'd By: K.E. No. 92-112-B	SURVEYED FOR Umatilla National Forest SURVEYED BY dig Scale: 1" = 500'
Drawn by: Lucy	Date: Aug. 1991 Date: Sept. 1992