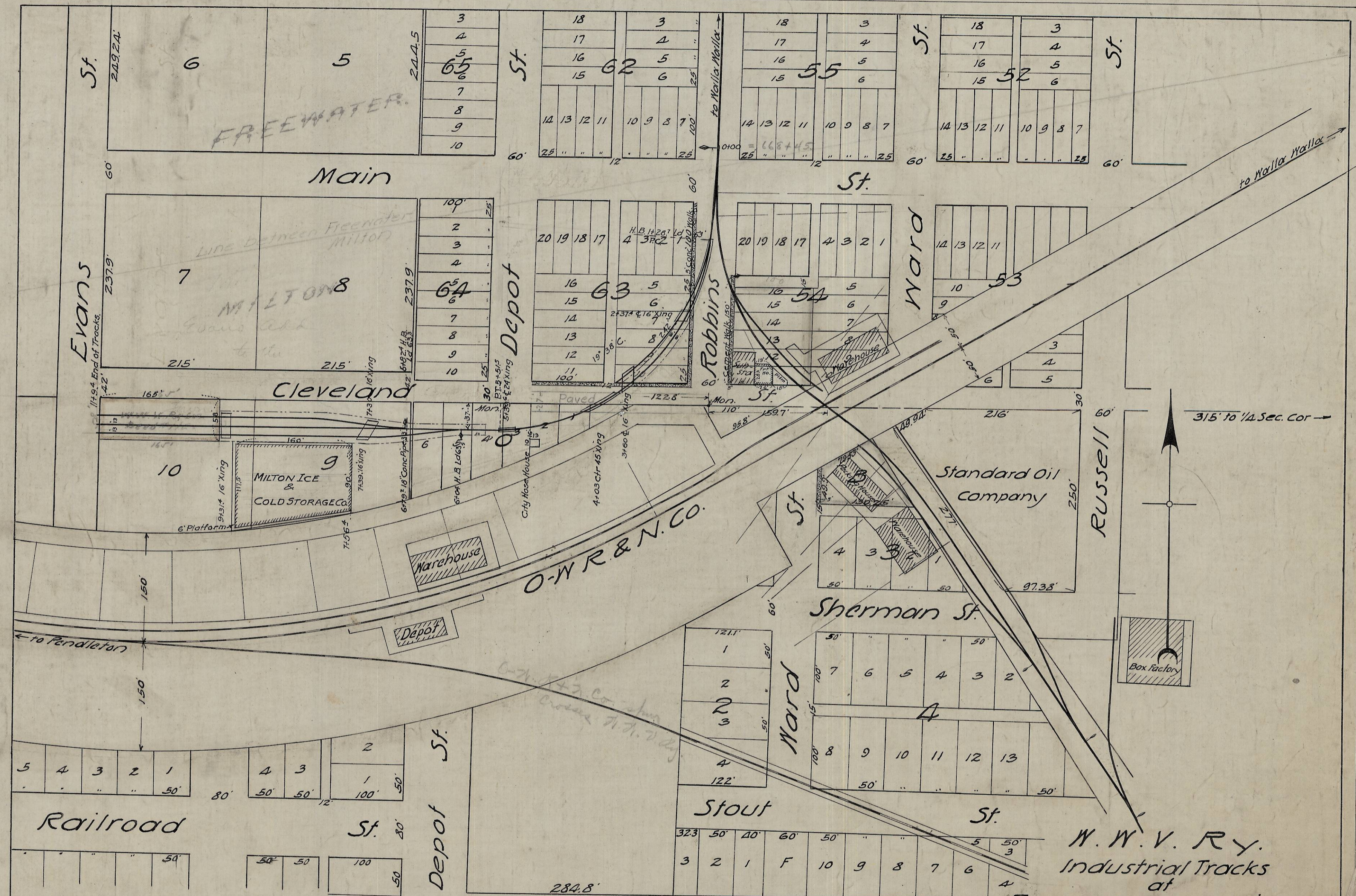


500-2



Made at Portland, Ore.
 Wm. H. Galvani, Engineer
 H. F. Parsons, Chief of Party

| | | | |
|----------|--------|------|------|
| SURVEY | H.F.P. | 8-3 | 1912 |
| DRAWN | R.L.S. | 8-5 | 1912 |
| CHECKED | " | " | " |
| APPROV'D | W.H.O. | 1912 | " |

Revised Oct., 1921

RECEIVED BY
 Umatilla County Surveyor
 Date 1-89
 Rec'd By JA
 No. 89-09-B

W.W.V. RY.
 Industrial Tracks
 at
 Freenwater and Milton
 near
 O-W R & N. Co.'s Station Grounds
 at Milton, Oregon
 Scale: 1 in = 100 ft.
 R.L.S. PC-10

Rev. 12-19-21