

Northwest corner of the Northeast quarter of the Northwest quarter of Section 14, 5/16" iron rod in monument box as per Umatilla County survey number 85-163-B

BASIS OF BEARING

The Southwesterly right of way line of U.S. Highway 395 as being South 54°13'00" East, as monumented by Umatilla County survey number 85-163-B

NARRATIVE

This survey was done at the request of Mary Major of West Star Development Corporation. The purpose of this survey is to replace a monument along the South line of this parcel destroyed by construction. I base my survey entirely on Umatilla County survey number 85-163-B, which placed or found monuments at all of the corners of the parcel. All of the monuments of the parcel were located on a site survey prior to construction on this property. I monument the missing corner by going record dead call from the 1/2" pin at the most Southwesterly corner of the parcel. This position is 0.05 ft. North of the destroyed pin as located prior to construction. The found monuments fit harmoniously with the dead calls as shown. I differ with the dead calls on three courses as shown. On the most Westerly line I differ with the bearing as the dead calls "parallel to the West line of the Northeast quarter of the Northwest quarter". I place this line parallel as called. The distance in the dead is a more or less call "to a pin". I accept the pin at the Southwest corner of the property and hold its position. From this pin I drive a line to the cross in the retaining wall. This course in the dead is a more or less call with no direction given. From the Northwest corner of the parcel, I come S 18°40'00" E, 46.40 ft. as per dead call and swing a 78.00 ft. radius arc to intersect the parallel line previously discussed. This creates a 4 1/2 minute difference from the record dead bearing as shown. This differs from the monumented position as shown. I find no other unusual conditions on this survey.

LEGEND

- Found 1/2" iron pin as per Umatilla County survey number 85-163-B
- Monument as per Umatilla County survey number 85-163-B
- Chiseled cross in 6" wide concrete retaining wall
- () Dead record bearing and distance (if other than true)
- Existing fence line
- Centerline

REFERENCE MATERIAL

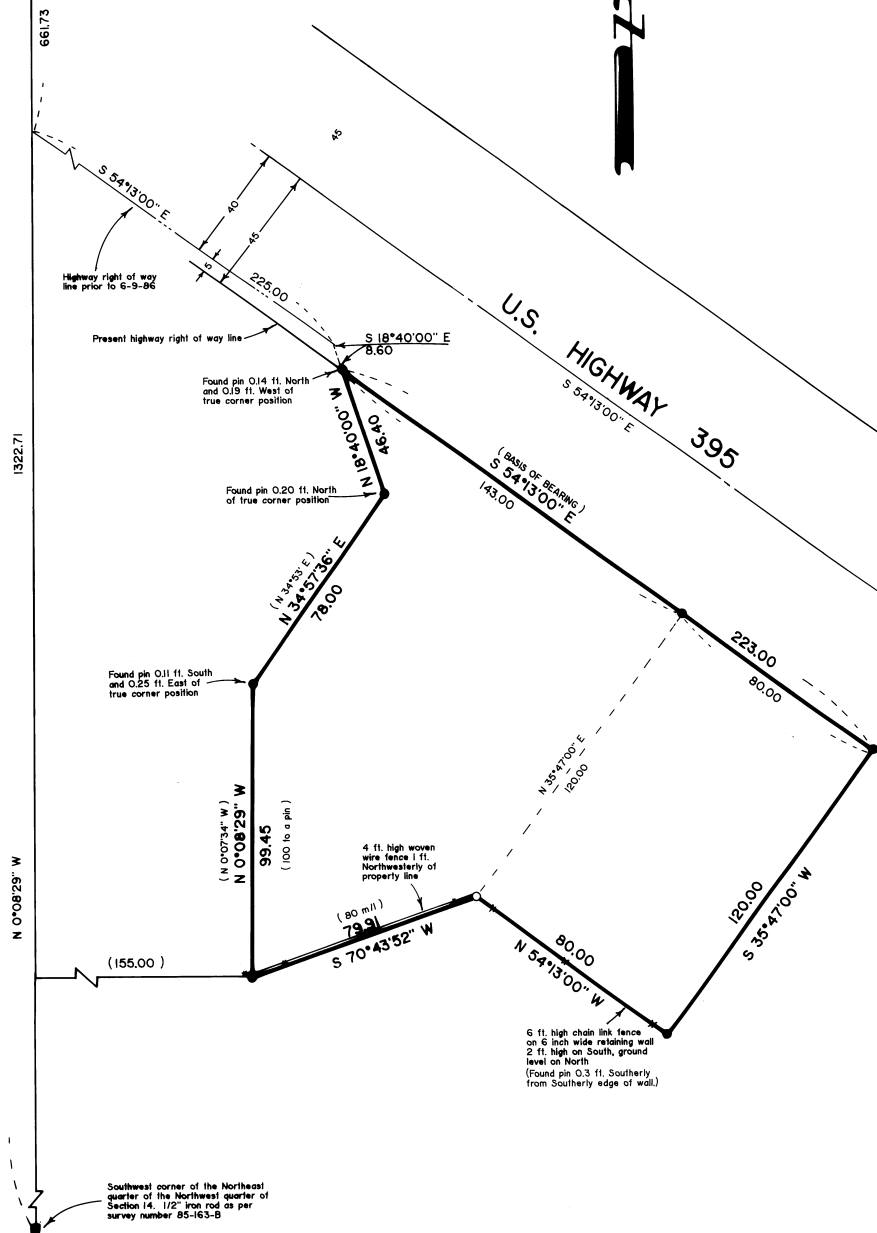
Umatilla County survey number 85-163-B
 DEED RECORDS
 Volume 188 Page 207
 Volume 189 Page 312
 Microfilm Numbers
 R-114 Page 185
 R-115 Page 737
 R-139 Page 47
 R-144 Page 1521



BAGETT - GRIFFITH & ASSOCIATES
 Licensed Oregon
 MAP OF SURVEY
 Parcel in the Northeast quarter of the Northwest quarter of Section 14, Township 4 North, Range 28 East of the Willamette Meridian
 UMATILLA COUNTY, OREGON

SURVEYED FOR	West Star Development Corporation	
SURVEYED BY	R.G.R.	11-88
Scale: 1" = 30'	Drawn by: R.G.R.	11-88

RECEIVED BY
 Umatilla County Survey
 Date: 11-88
 Rec'd by: KA
 No. 88-65-B



Southwest corner of the Northeast quarter of the Northwest quarter of Section 14, 1/2" iron rod as per survey number 85-163-B

6 ft. high chain link fence on 6 inch wide retaining wall 2 ft. high on South, ground level on North (Found pin 0.3 ft. Southerly from Southerly edge of wall)

4 ft. high woven wire fence 1 ft. Northwesterly of property line (80 m/h) 79.91

Found pin 0.11 ft. South and 0.25 ft. East of true corner position

Found pin 0.20 ft. North of true corner position

Found pin 0.14 ft. North and 0.19 ft. West of true corner position

Highway right of way line prior to 6-9-86

Present highway right of way line