

OREGON STATE PARKS & RECREATION DIVISION SURVEY

SECTION 20, T.1N., R.35E., W.M.
 BLUE MOUNTAIN FOREST WAYSIDE
 UMATILLA COUNTY

SCALE : 1" = 400

JANUARY 5, 1988

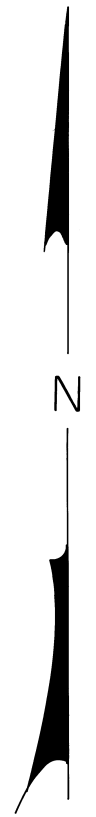
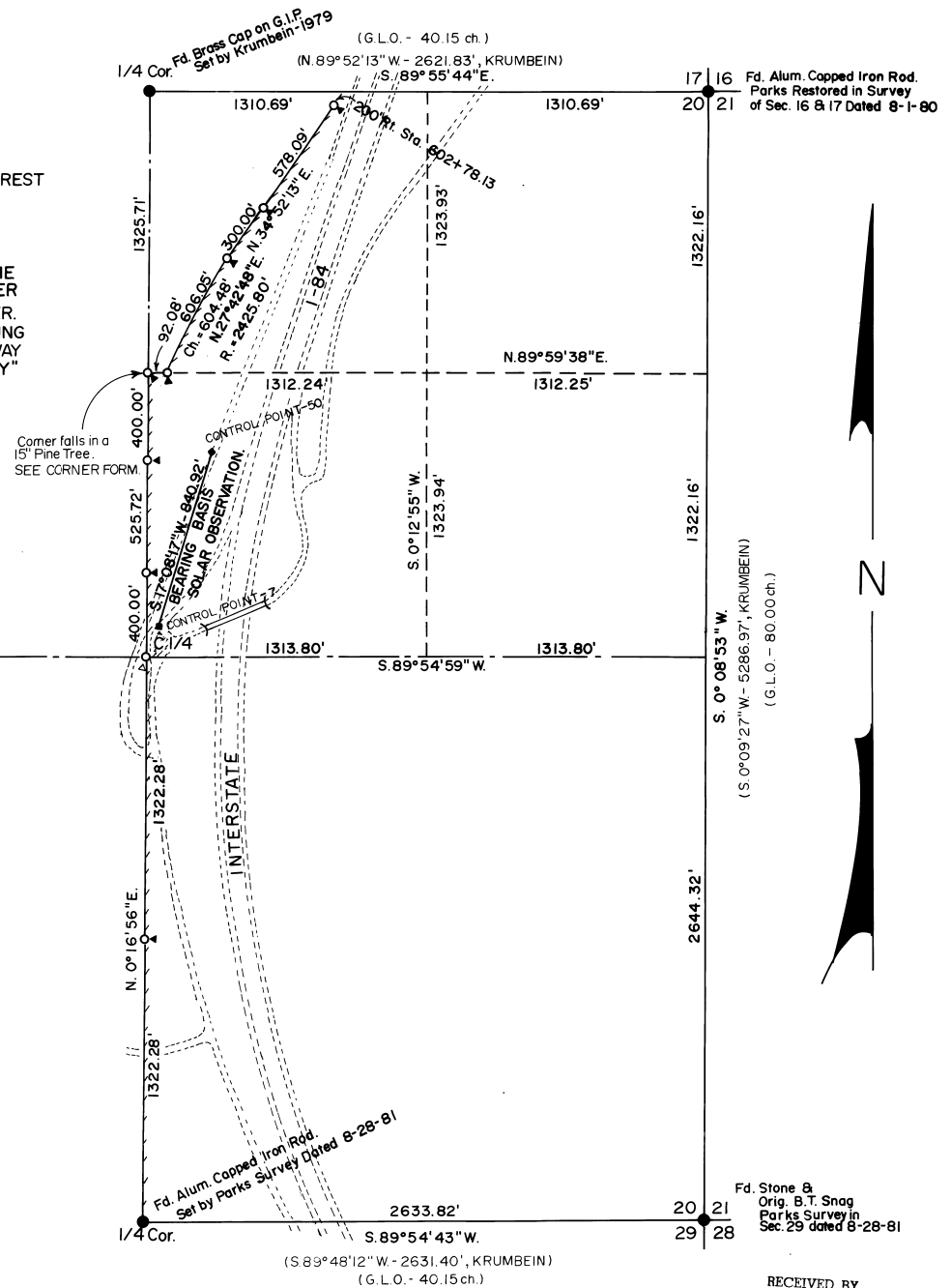
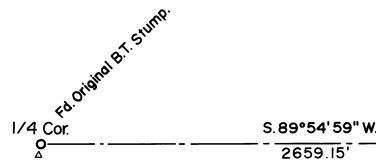
NARRATIVE

THE PURPOSE OF THIS SURVEY WAS TO ESTABLISH THE WEST BOUNDARY OF BLUE MOUNTAIN FOREST WAYSIDE LOCATED IN SECTION 20, T.1N., R.35E., W.M. OF UMATILLA COUNTY.

THE BEARINGS ARE FROM A SOLAR OBSERVATION UTILIZING THE LOCAL HOUR ANGLE METHOD.

CONTROL WAS ESTABLISHED WITH A PENTAX (PX-10D) TOTAL STATION.

THE PARKS SURVEY CREW (R. HEMMER, R. HILL, H. HANSON, AND L. BOGE) FOUND AND TIED ALL THE NECESSARY MONUMENTS TO THE CONTROL, THEN SUBDIVIDED THE SECTION AND N.E. QUARTER OF SECTION 20. AND CALCULATED THE PARK BOUNDARY IN THE N.W. QUARTER OF THE N.E. QUARTER. THIS WAS DONE BY USING, OREGON STATE HIGHWAY DEPARTMENT MAP (1R-3-8), AND PROPORTIONING THE DISTANCES SHOWN FROM THE E. 1/16 BETWEEN 17 AND 20 TO THE OLD OREGON TRAIL HIGHWAY AND FROM THE C.N. 1/16 TO SAID HIGHWAY. METAL SIGNS MARKED "OREGON STATE PARK BOUNDARY" HAVE BEEN NAILED TO TREES AT FREQUENT INTERVALS.



- INDICATES FOUND MONUMENTS.
- INDICATES SET 5/8" X 30" IRON RODS WITH YELLOW PLASTIC CAP MARKED "OREGON STATE PARKS".
- ▶ INDICATES SET ORANGE CARSONITE POST WITH DECAL MARKED "PROPERTY BOUNDARY- STATE PARK LAND BEHIND THIS SIGN".
- ▷ INDICATES SET ORANGE CARSONITE POST NO DECAL.
- ↗ INDICATES PARK BOUNDARY.
- () INDICATES RECORD INFORMATION.

REGISTERED
 PROFESSIONAL
 LAND SURVEYOR
John E. Hollingsworth
 OREGON
 JULY 9, 1988
 JOHN E. HOLLINGSWORTH
 691

OREGON STATE PARKS
 525 TRADE ST. S.E.
 SALEM, OR. 97310

NOTE: SEE ACCOMPANYING OREGON CORNER RESTORATION FORMS

RECEIVED BY
 Umatilla County Surveyor
 2-88
 Rec'd by KA
 No. 88-11-B